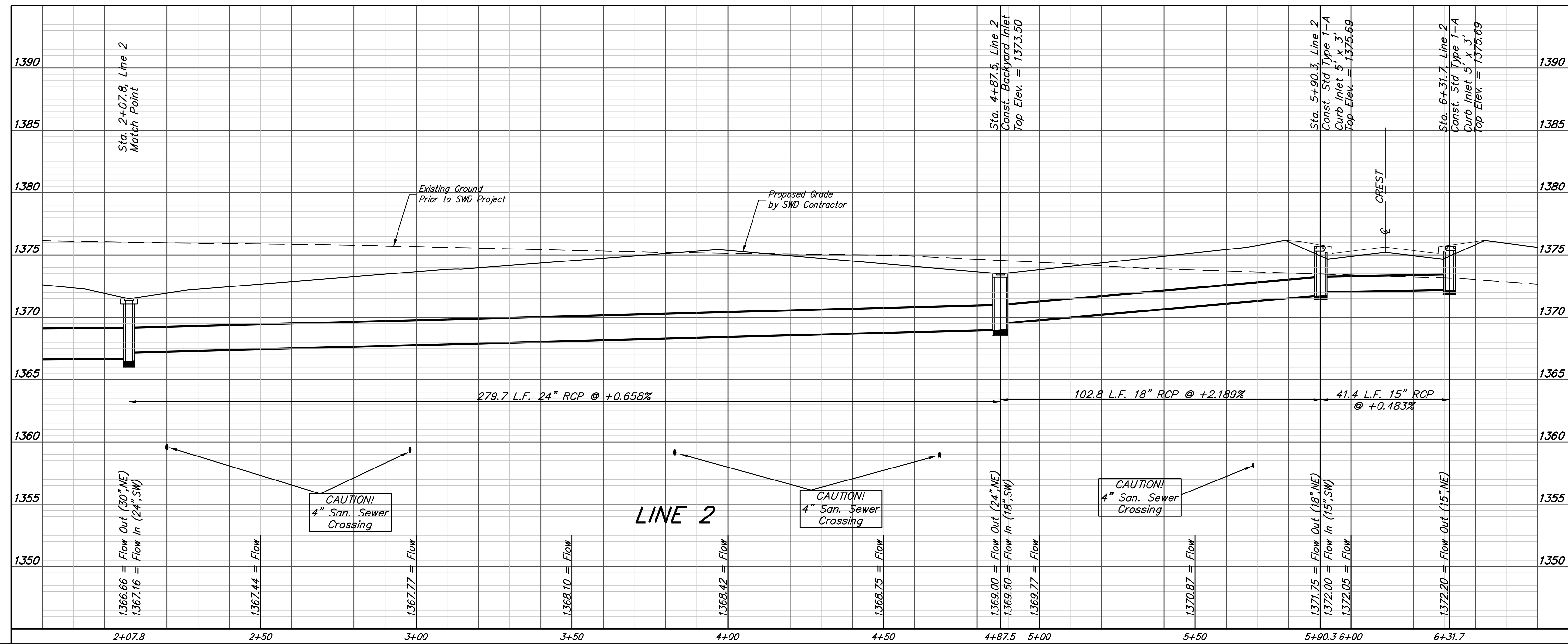
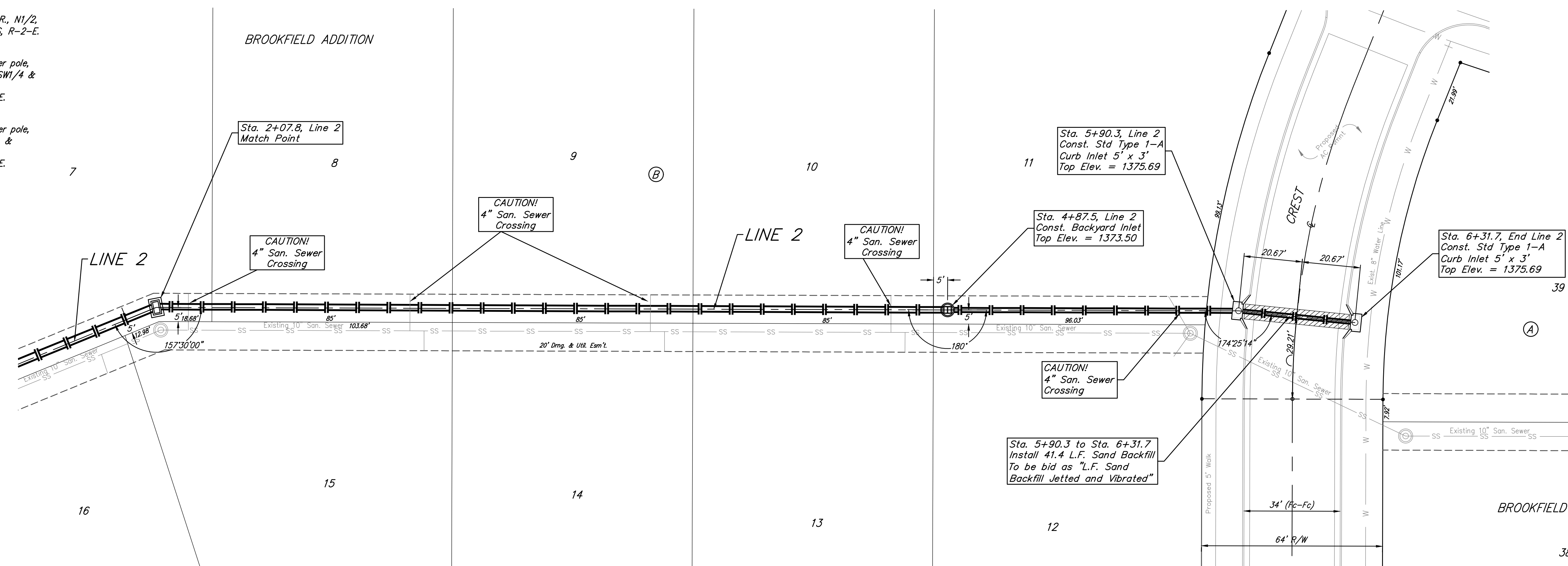
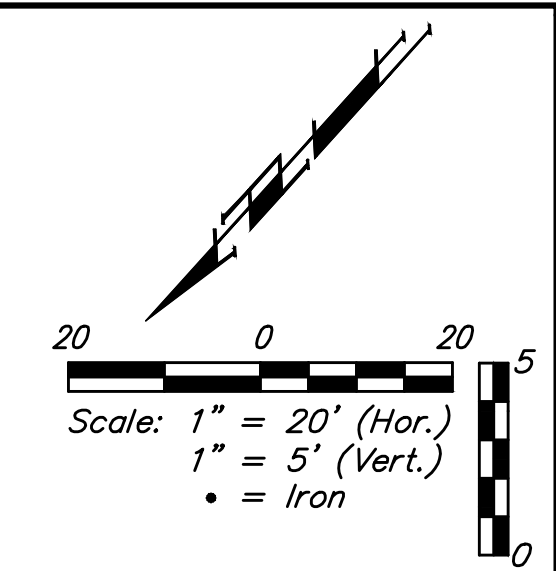


**BENCHMARKS:**  
 RR spike in asphalt, SW COR., N1/2, SW1/4, Sec. 34, TWP. 26-S, R-2-E. Elev. = 1400.59 NAVD88  
 RR spike in E. face of power pole, 174± N. of S. line, N1/2, SW1/4 & 49± E. of W. line, SW1/4, Sec. 34, TWP. 26-S, R-2-E. Elev. = 1398.64 NAVD88  
 RR spike in S. face of power pole, 294± S. of N. line, SW1/4, & 48± E. of W. line, SW1/4, Sec. 34, TWP. 26-S, R-2-E. Elev. = 1386.14 NAVD88



|                             |               |  |                          |
|-----------------------------|---------------|--|--------------------------|
|                             |               | Brookfield Addition - Phase I<br><b>LINE 2</b><br>Storm Water Sewer Improvements   |                          |
|                             |               | <small>Baughman Company, P.A. 315 Ellis St. Wichita, KS 67211 P 316-262-7271 F 316-262-0149<br/>         ENGINEERING   SURVEYING   PLANNING   LANDSCAPE ARCHITECTURE</small> |                          |
| PROJECT NUMBER<br>472-85344 | DESIGN<br>AEG | DRAWN<br>JAK   | DATE<br>6/30/17          |
| REVISIONS:                  | APPROVED      | SCALE<br>Noted   | SHEET<br><b>23 OF 56</b> |