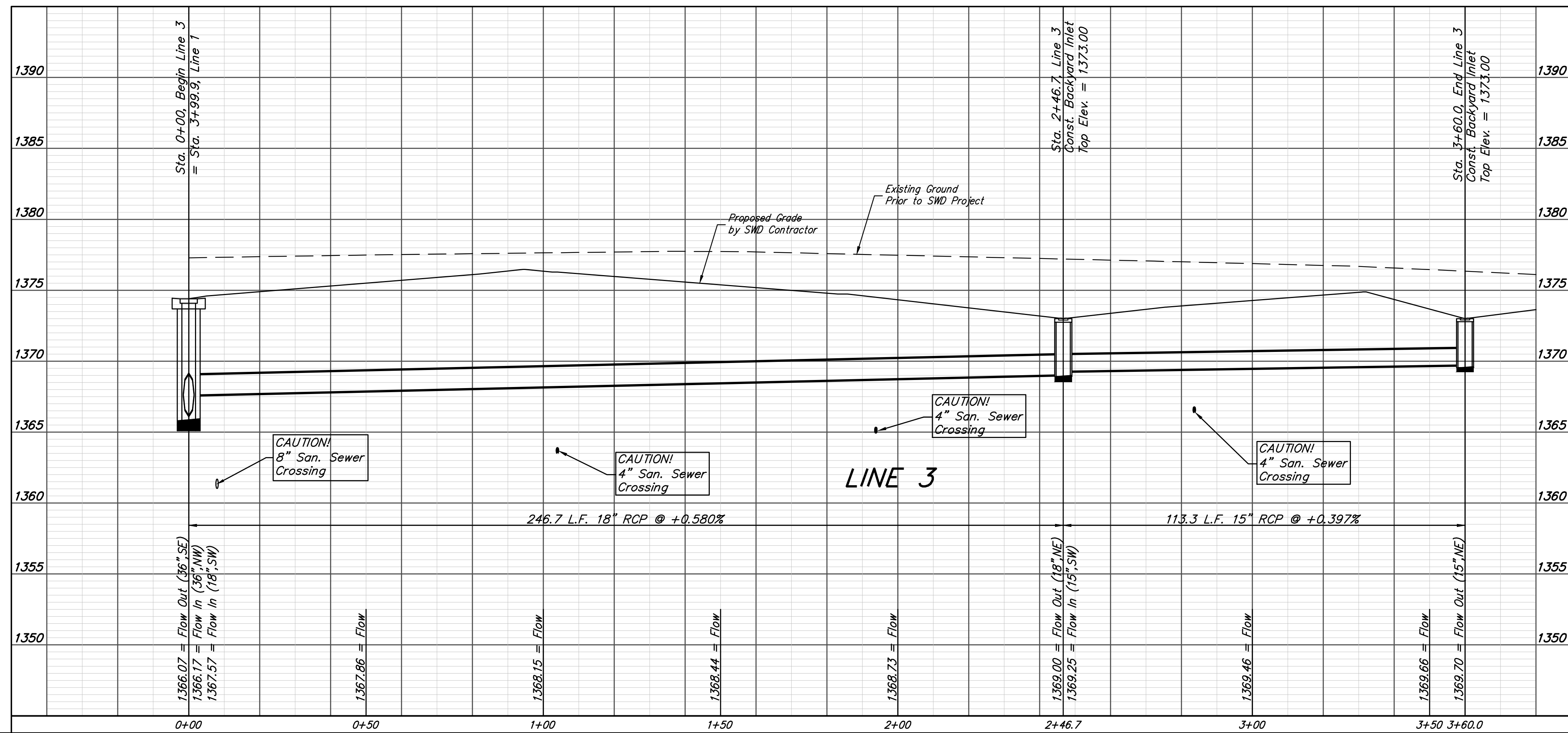
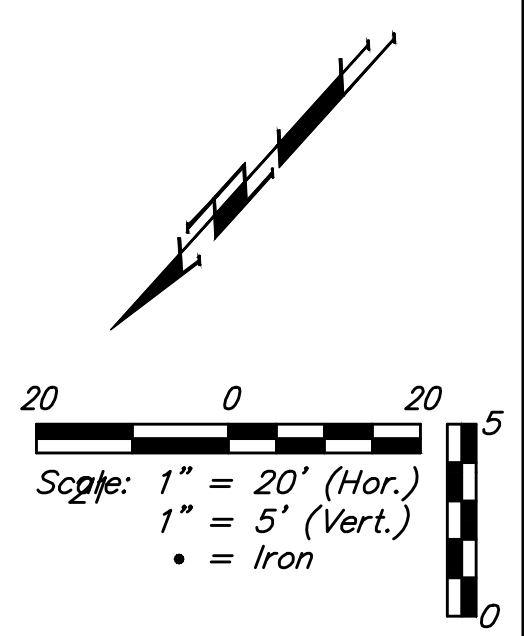
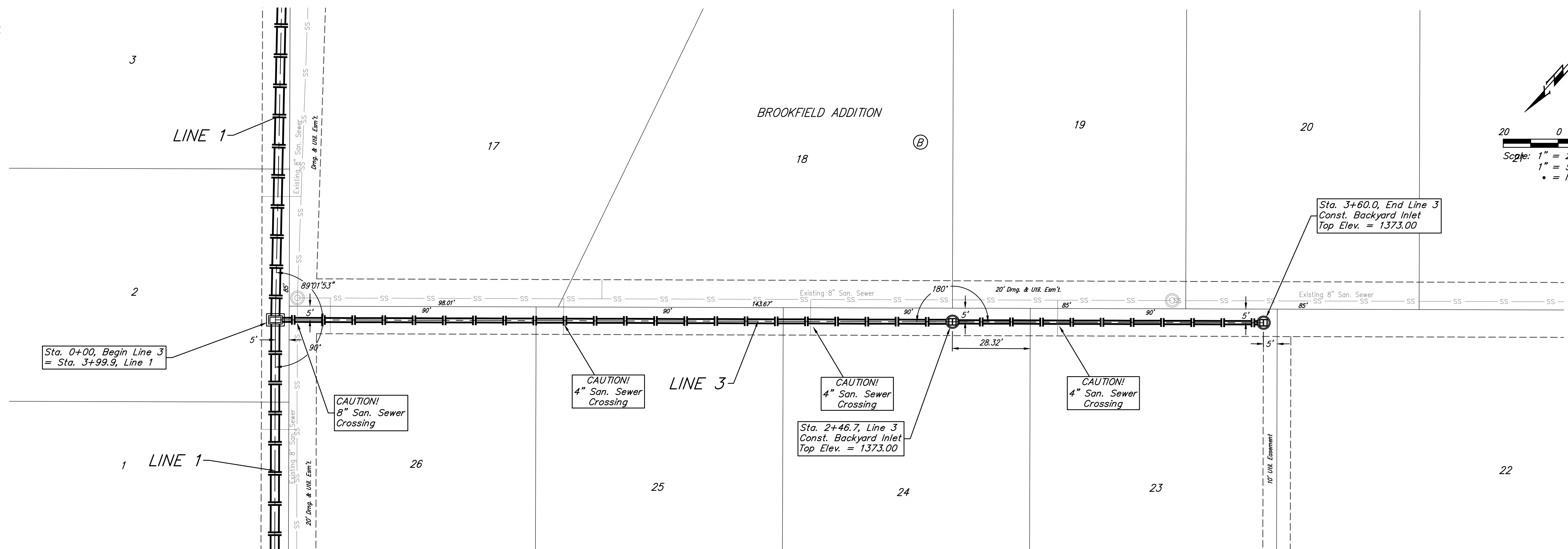


**BENCHMARKS:**  
 RR spike in asphalt, SW COR., N1/2, SW1/4, Sec. 34, TWP. 26-S, R-2-E. Elev. = 1400.59 NAVD88  
 RR spike in E. face of power pole, 174± N. of S. line, N1/2, SW1/4 & 49± E. of W. line, SW1/4, Sec. 34, TWP. 26-S, R-2-E. Elev. = 1398.64 NAVD88  
 RR spike in S. face of power pole, 294± S. of N. line, SW1/4, & 48± E. of W. line, SW1/4, Sec. 34, TWP. 26-S, R-2-E. Elev. = 1386.14 NAVD88



		<b>Brookfield Addition - Phase I</b> <b>LINE 3</b> Storm Water Sewer Improvements	
		<small>Baughman Company, P.A. 315 Ellis St. Wichita, KS 67211 P 316-262-7271 F 316-262-0149          ENGINEERING   SURVEYING   PLANNING   LANDSCAPE ARCHITECTURE</small>	
PROJECT NUMBER <b>472-85344</b>	DESIGN <b>AEG</b>	DRAWN <b>JAK</b>	
REVISIONS:	APPROVED	DATE <b>6/30/17</b>	
	SCALE <b>Noted</b>		
			<b>24 OF 56</b>

E:\Projects\Brookfield Addition\_1604F190\Engineering\Phase I\STR\_1608E541\SW\PLANS.dwg