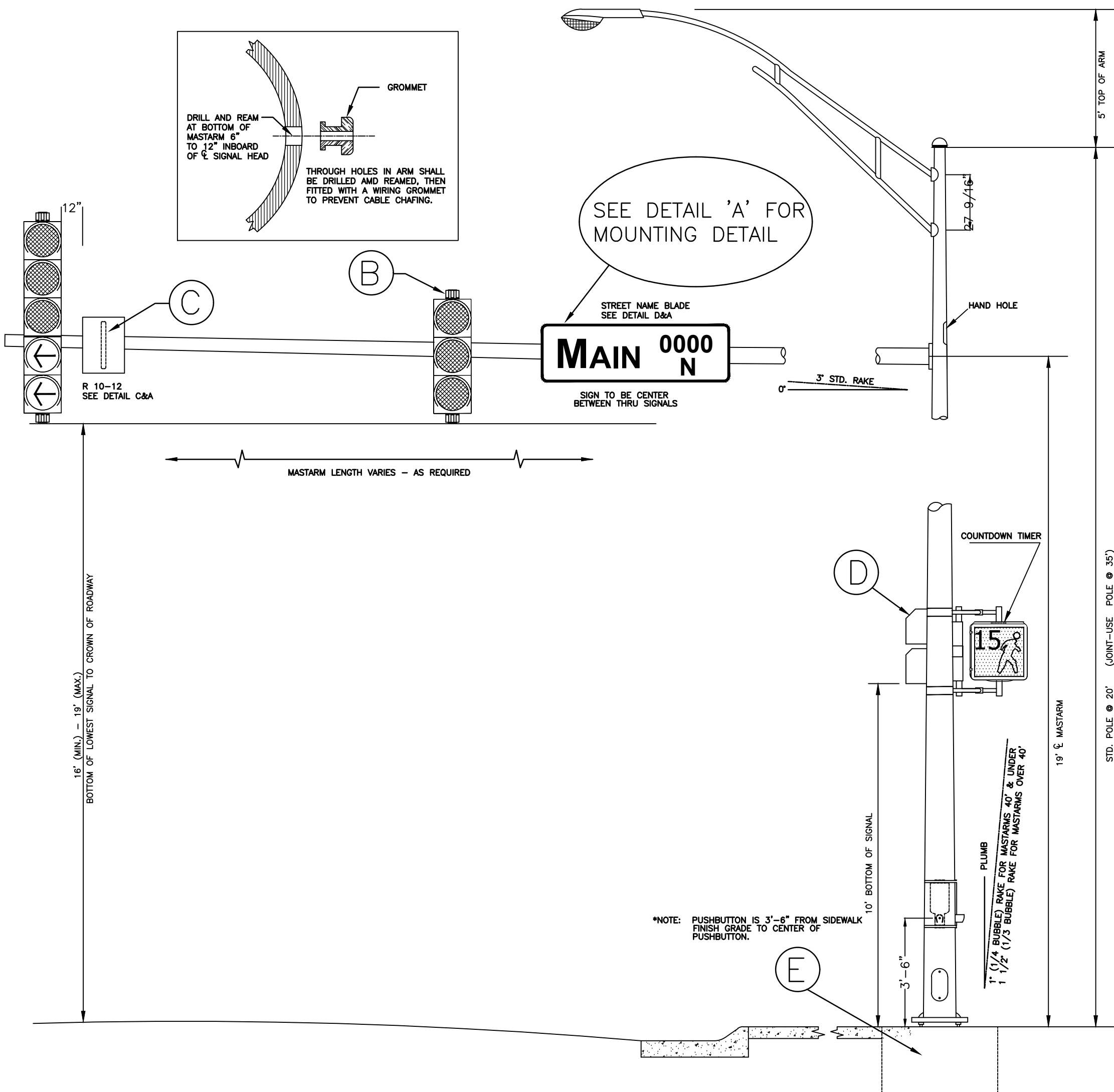
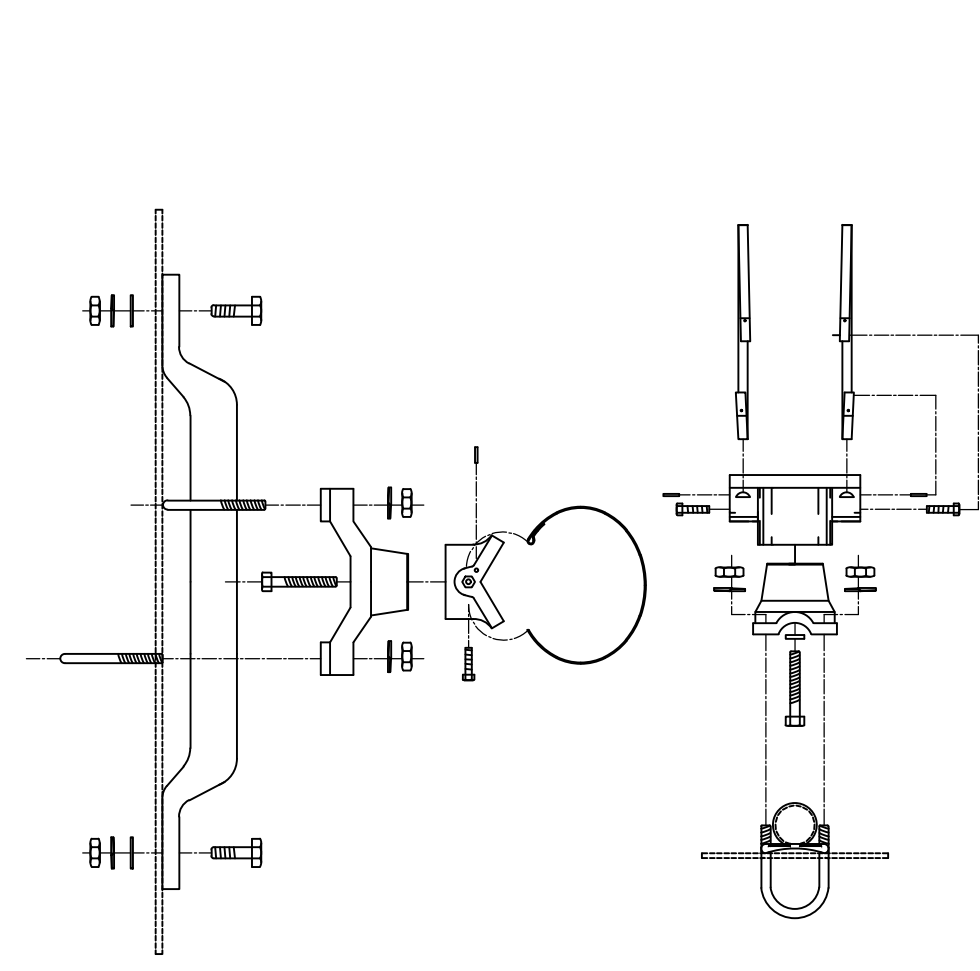


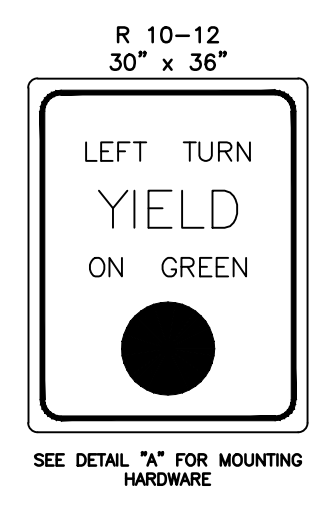
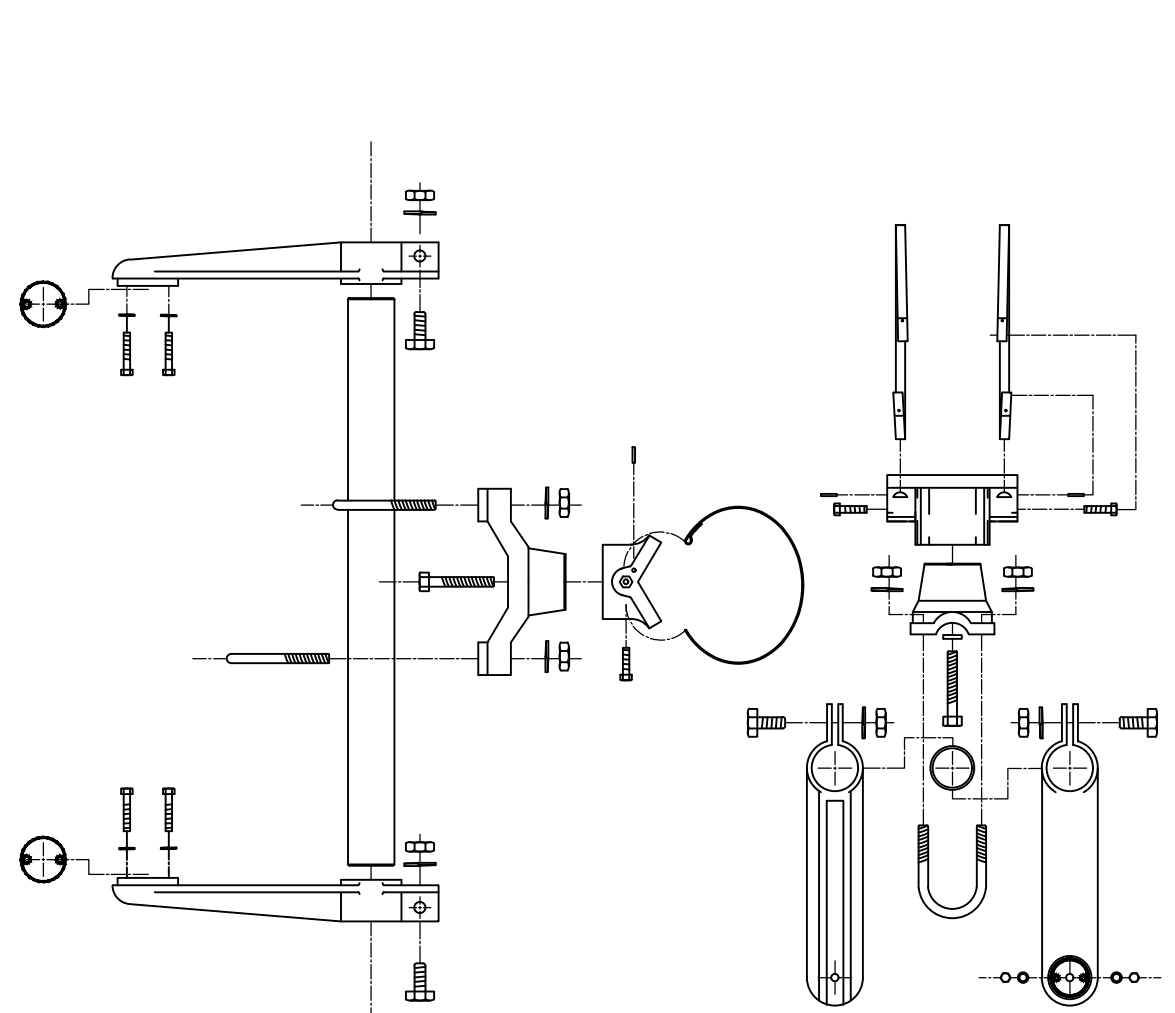
HSIP-N063(801)



**BANDED SIGN MOUNTING BRACKET DETAIL**



**TYPE I SIGNAL MOUNTING BRACKET ASSEMBLY DETAIL**



STANDARD SIGNING

**PUSH BUTTON STATION**

Message and Sound options include:

- Locating tone
- Verbal Street Name (Example: Crossing Main at Central)
- All features field selectable using a Configurator.

Construction:

- Die-cast aluminum, powder coated Black in color.
- Street Name in Braille in the directional arrow of the sign.
- Option "B" signing option.

Push button:

- ADA compliant
- Raised tactile arrow on the button
- Solid State switch rated at a Minimum of 20 million actuations

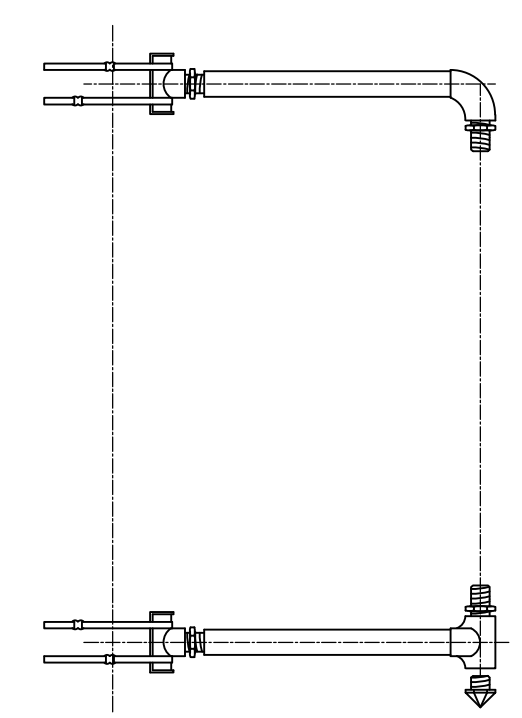
**PLATE MARKING OPTIONS**

**STANDARD OPTION A**

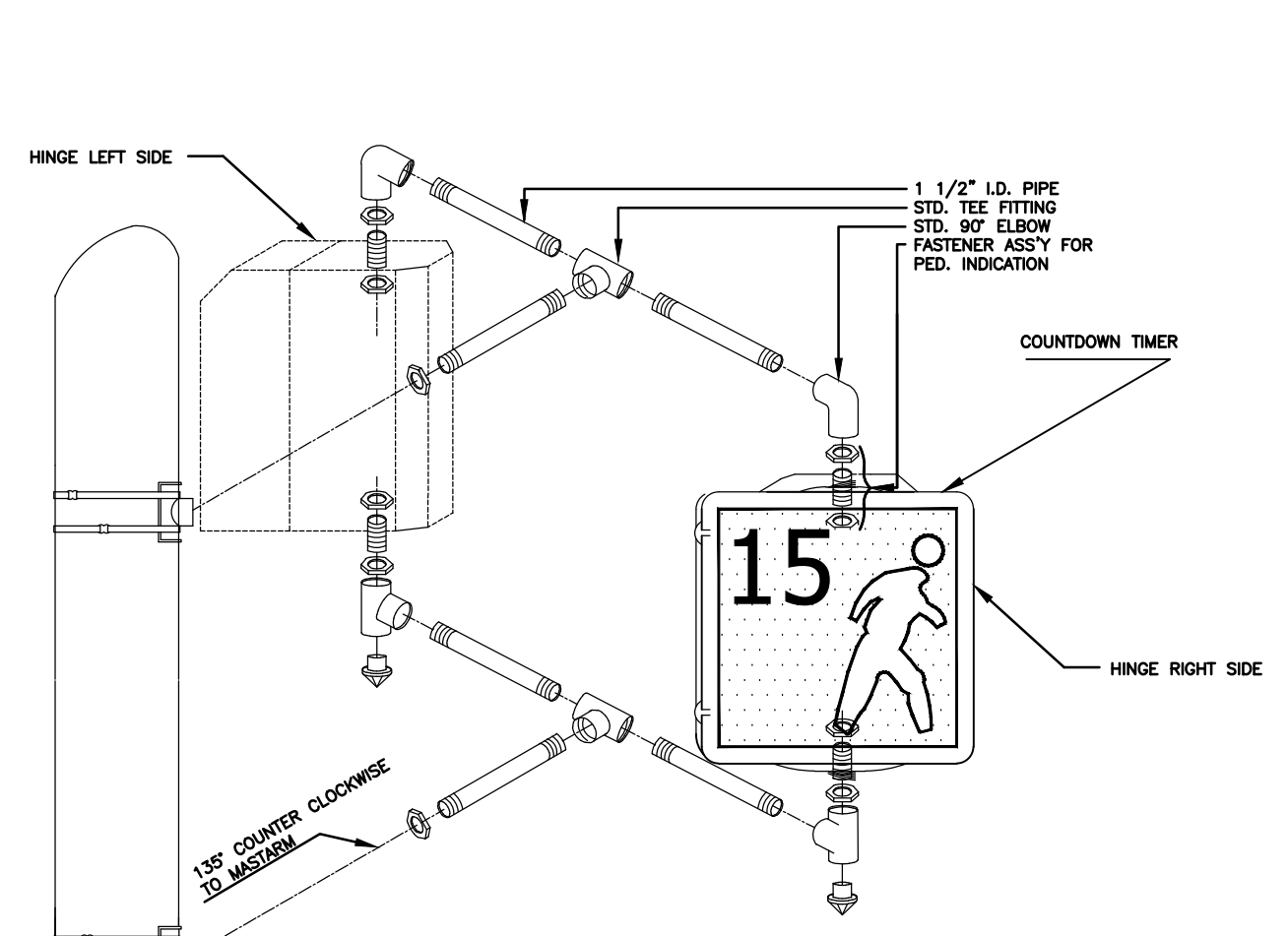
**OPTION B**

DWG. NO. N45AN0-X

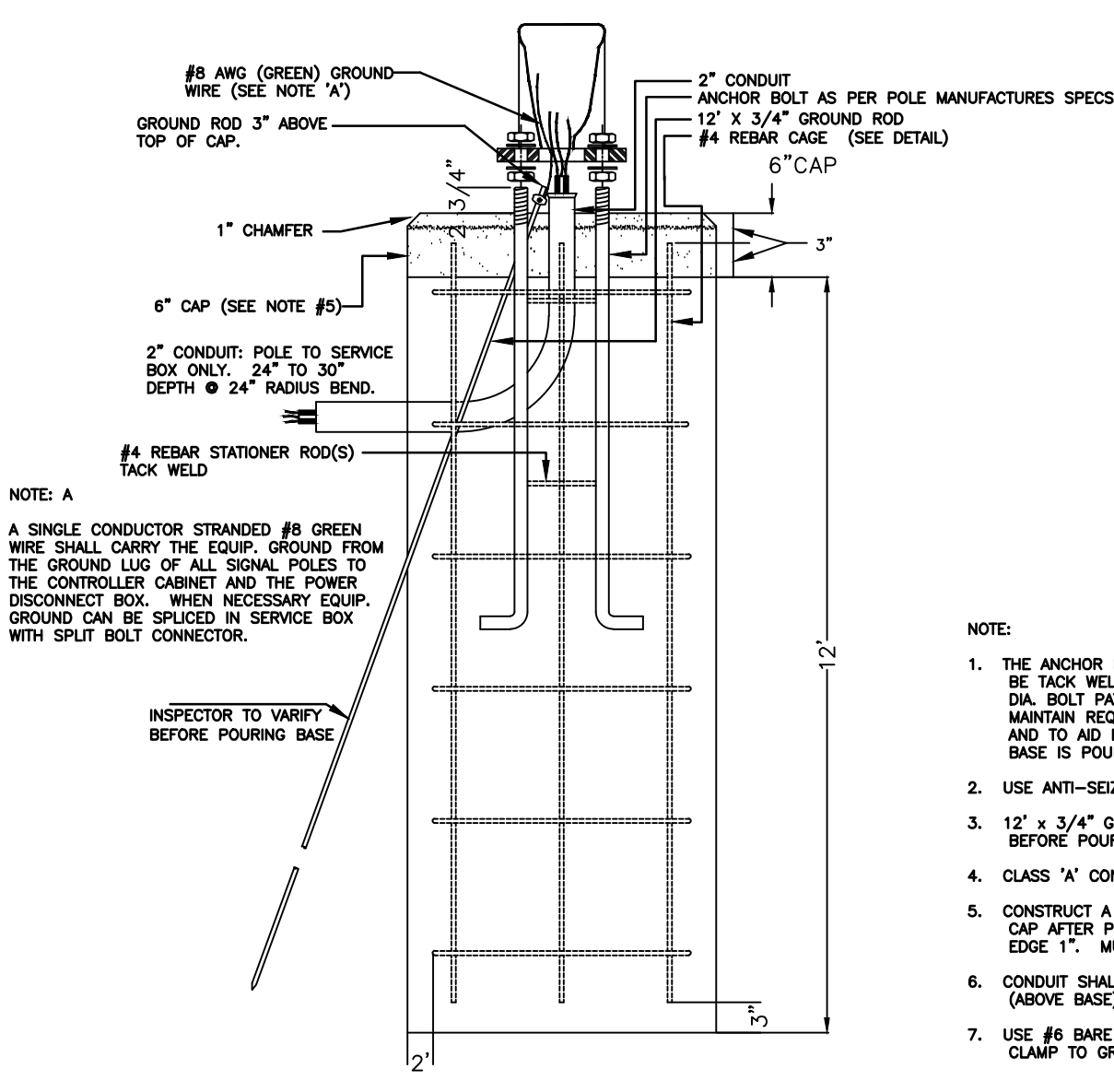
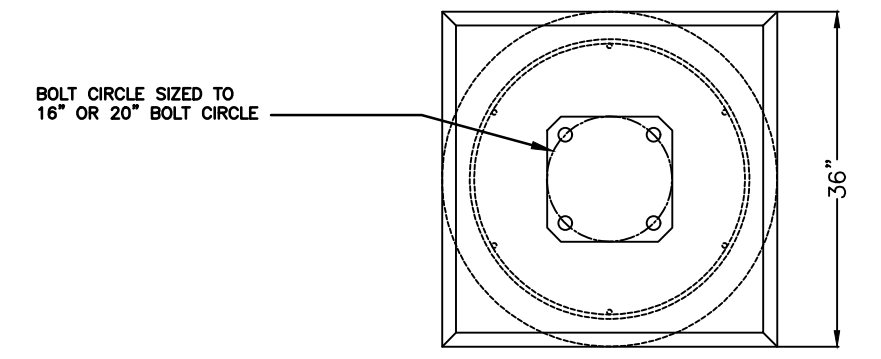
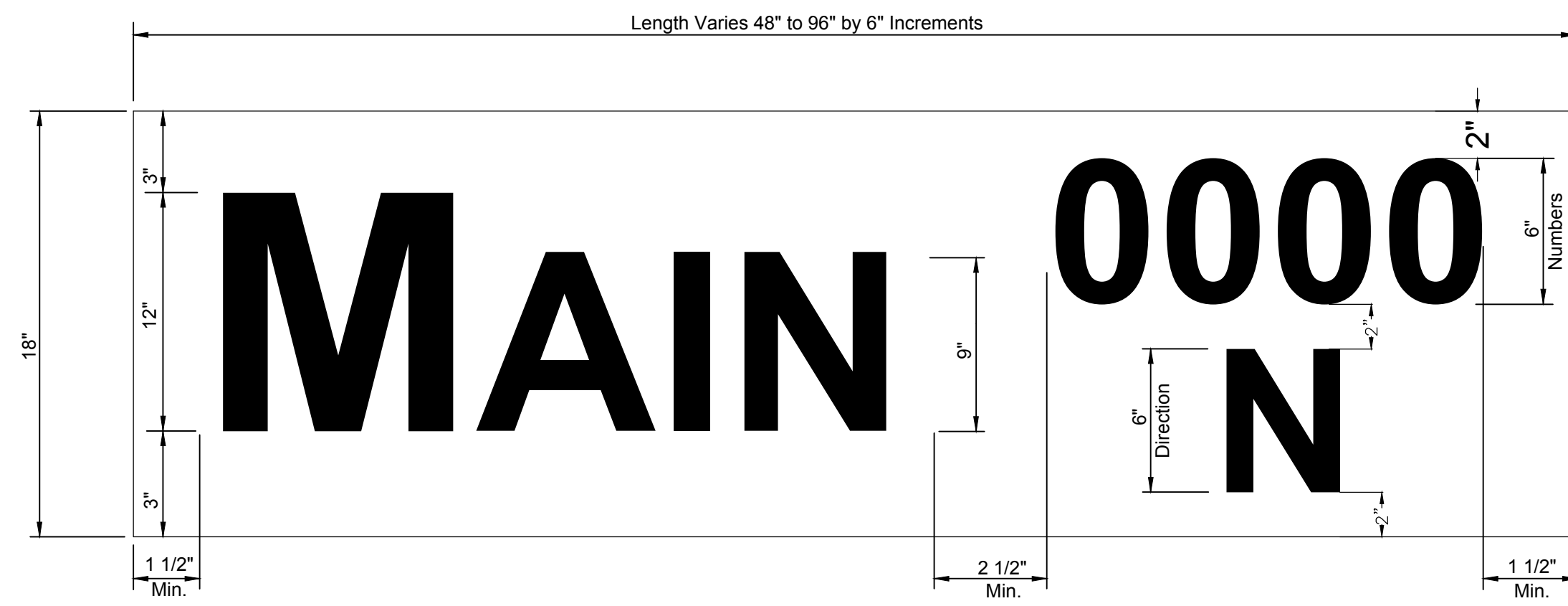
**TYPE III SIDE-OF-POLE MOUNTING BRACKET ASSEMBLY**



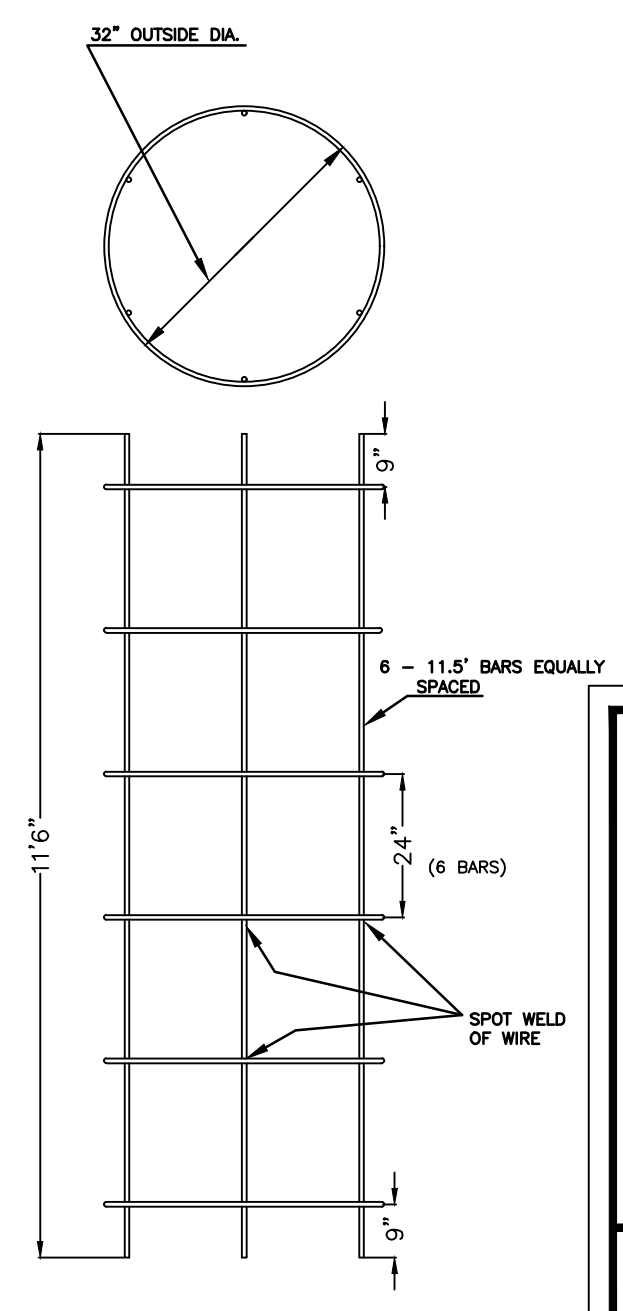
**TYPE II SIGNAL MOUNTING BRACKET ASSEMBLY (SIDE-OF-POLE)**



- DIRECTIONAL ALIGNMENT OF PED. INDICATIONS & BRACKET(S) SHALL BE DETERMINED IN THE FIELD BY THE ENGINEER.
- THROUGH HOLES IN THE POLE SHALL BE DRILLED AND WELL REAMED TO PREVENT CABLE CHAFING.
- HINGE PEDESTRIAN SIGNAL DOORS AWAY FROM POLE.
- CLAM SHELL BRACKETS ARE NOT ACCEPTABLE.



**REBAR CAGE**



**CITY OF WICHITA**

PUBLIC WORKS & UTILITIES ENGINEERING DIVISION

REVISED: AUGUST 2014

**STEEL SIGNAL POLE ASSEMBLY DETAILS**

TRAFFIC ENGINEER  
**BRIAN A. COON, P.E.**

PROJECT NUMBER 472-85254	OCA NUMBER 707098	DATE 03/2017
-----------------------------	----------------------	-----------------

CITY ENGINEER'S OFFICE  
CITY HALL - SEVENTH FLOOR  
455 NORTH MAIN STREET  
WICHITA, KANSAS 67202-1620  
(316) 268-4501

SHEET  
**31 of 58**