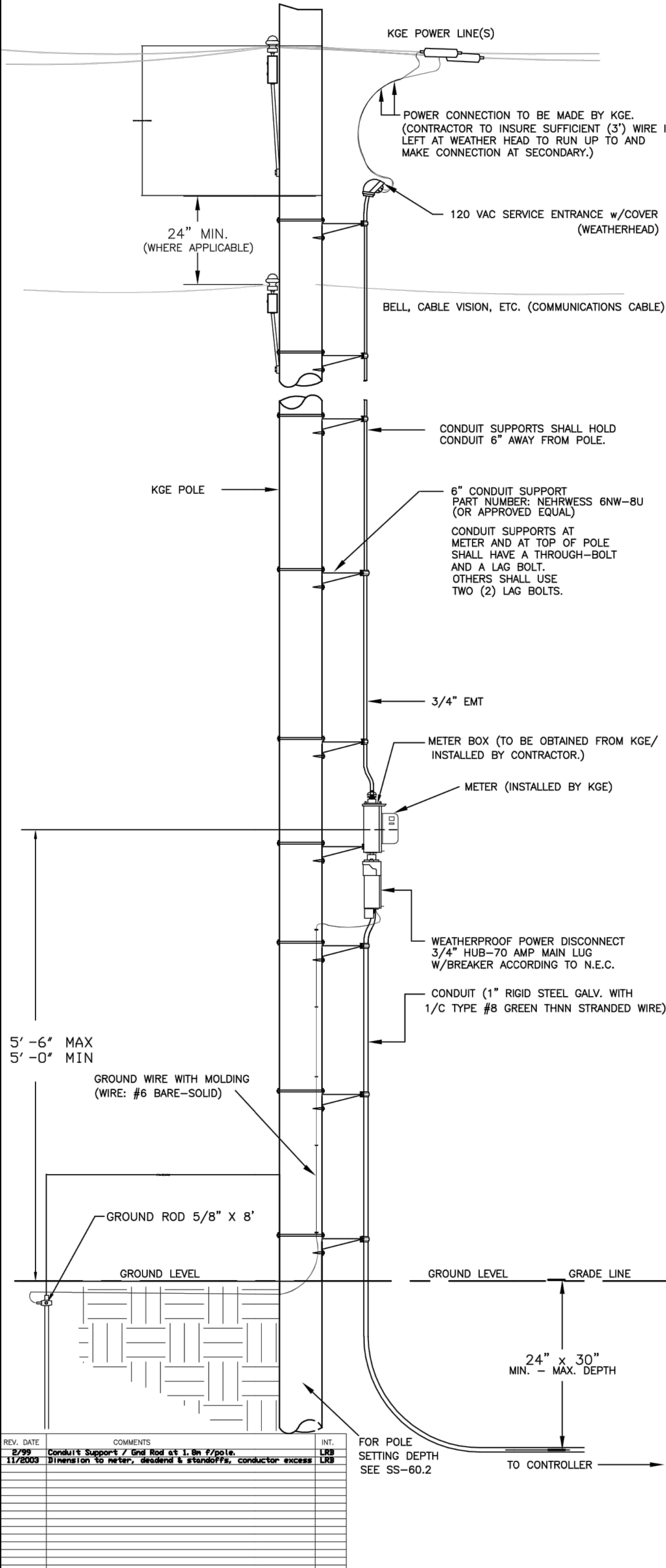
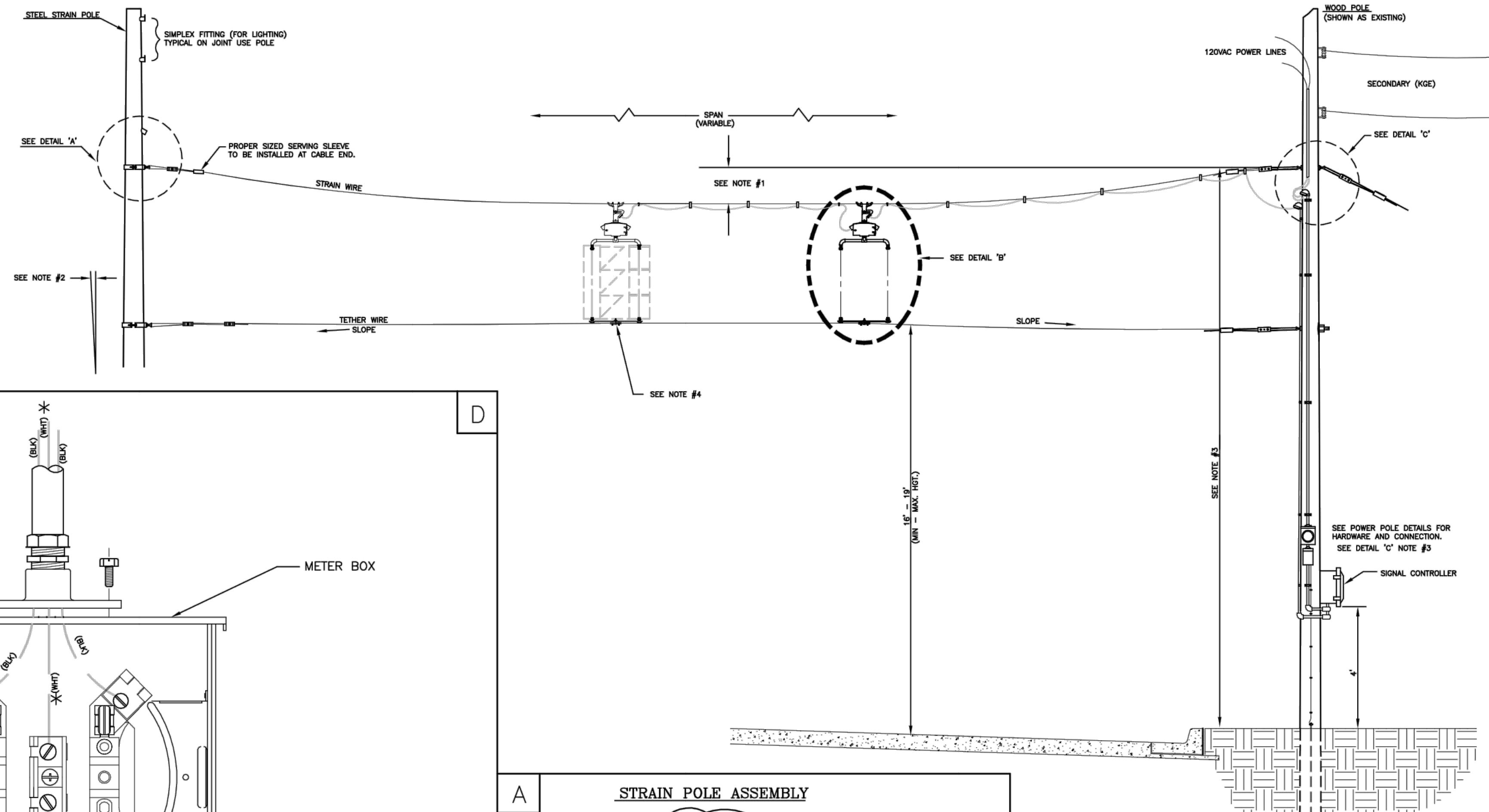


POWER POLE DETAILS



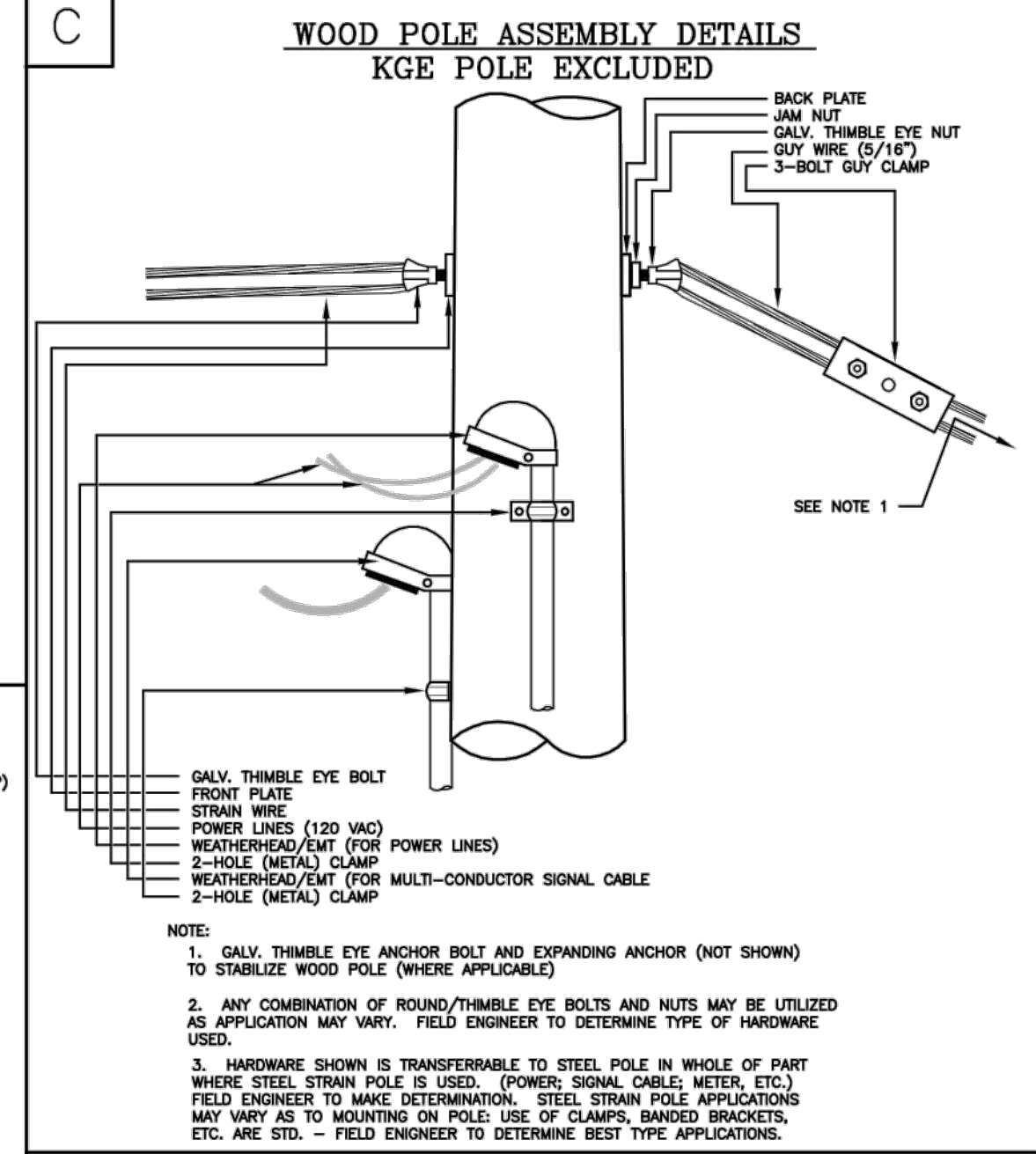
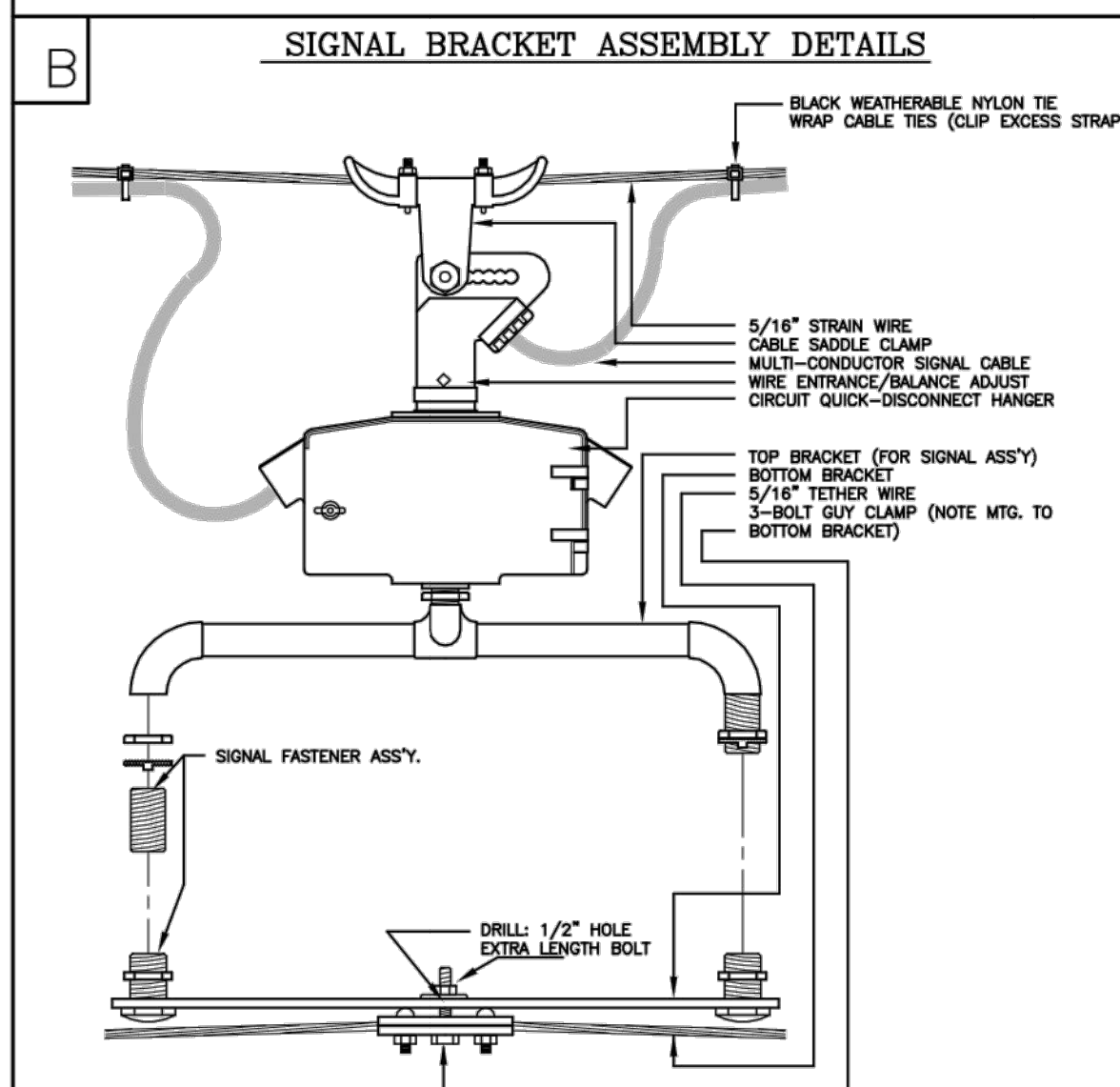
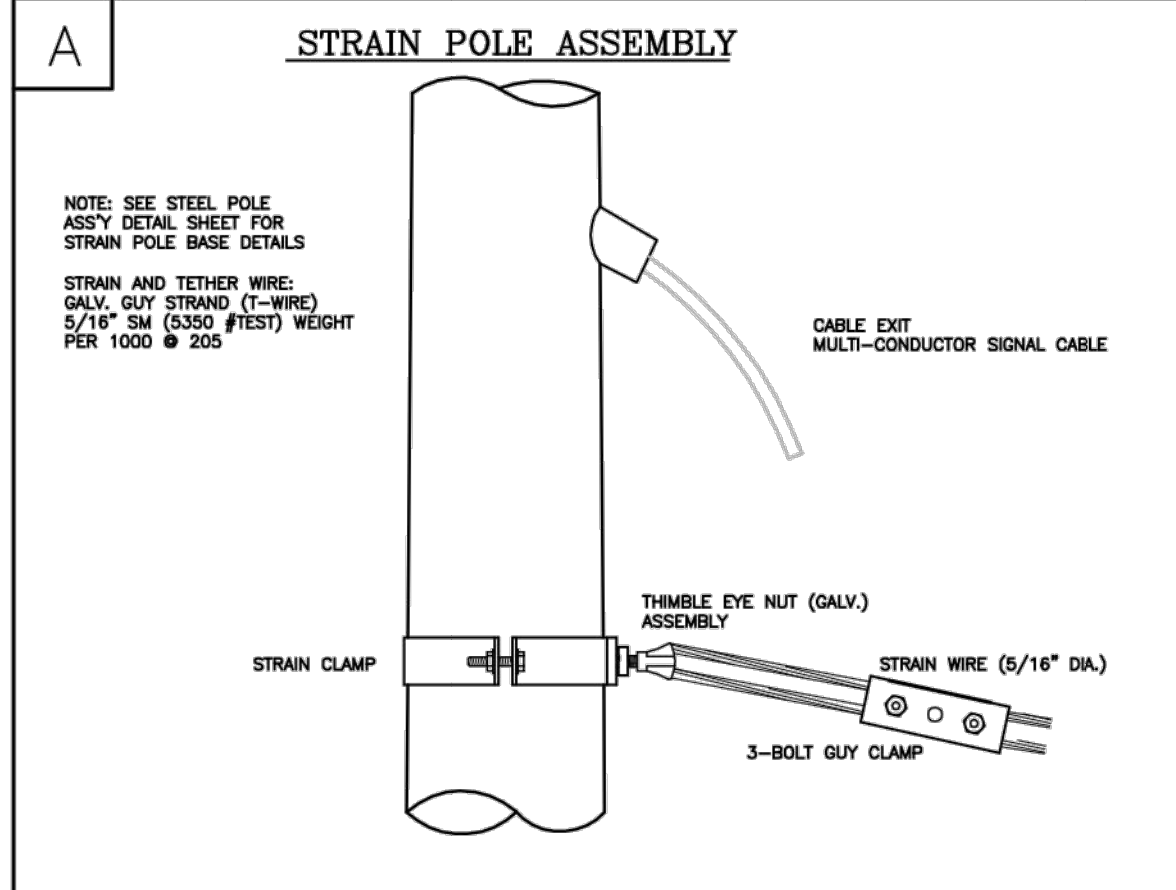
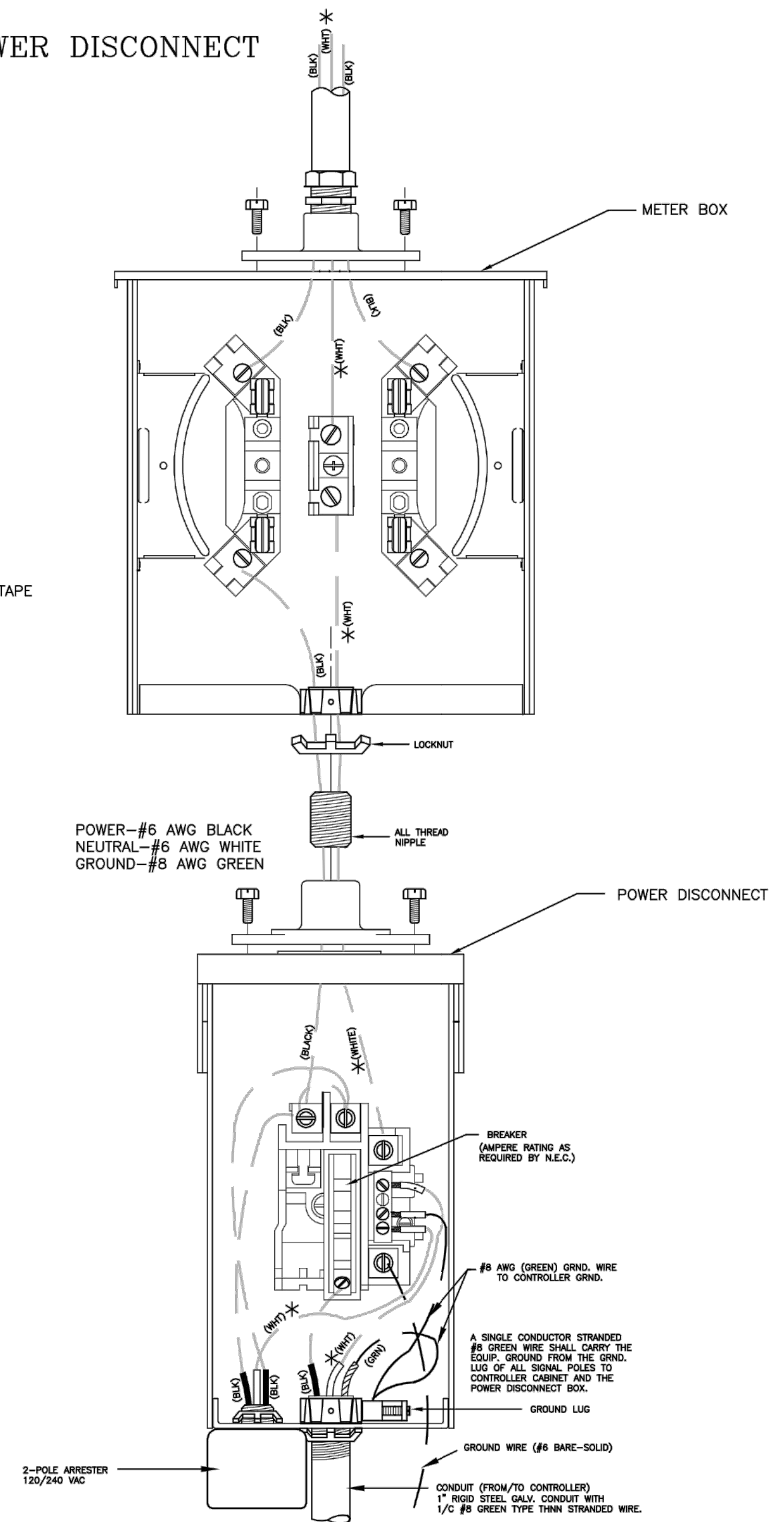
SPANWIRE ASSEMBLY DETAILS

1. MAX. SAG = 5% OF SPAN.
2. STANDARD BACKRAKE = 1.5'
3. HEIGHT OF STRAIN WIRE HOOK-UP TO BE DETERMINED BY FIELD ENGINEER. TRAFFIC SIGNAL CABLE TO BE SECURED TO STRAIN (SPAN) WIRE WEATHERABLE NYLON CABLE HANGERS (12" CTR.) DETAIL 'B'
4. TETHER CLAMP TO BE DESIGNED TO RELEASE UNDER 'HIGH WIND LOAD' TO PERMIT SIGNAL 'FREE SWING'.



METER BOX & POWER DISCONNECT DETAILS

NOTE:
* TO BE MARKED WITH WHITE TAPE



TYLER ROAD - 21ST STREET NORTH TO 29TH STREET NORTH

POWER POLE AND SPAN POLE ASSEMBLY DETAILS

PROJECT NUMBER: 472-84921

DRAWN BY: T.M. APPROVED BY: REVISOR BY: L. B.

DATE: FEB. 96 DATE: 7/12/11

CITY OF WICHITA DEPARTMENT OF PUBLIC WORKS

DIVISION OF TRAFFIC ENGINEERING PAUL D. GUNZELMAN, P.E. TRAFFIC ENGINEER

SHEET 34 of 58