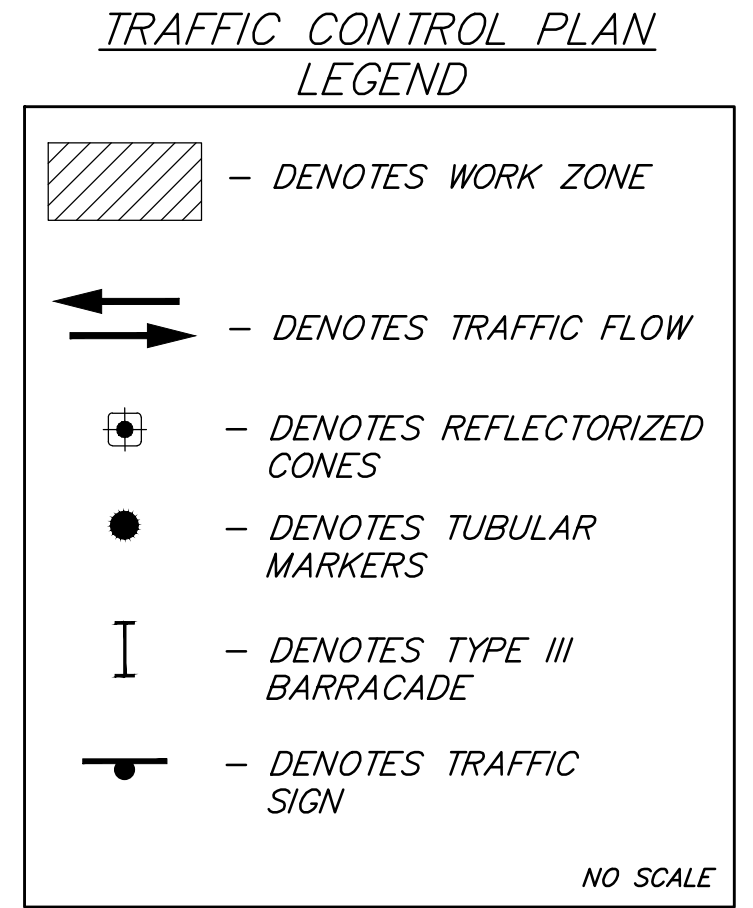
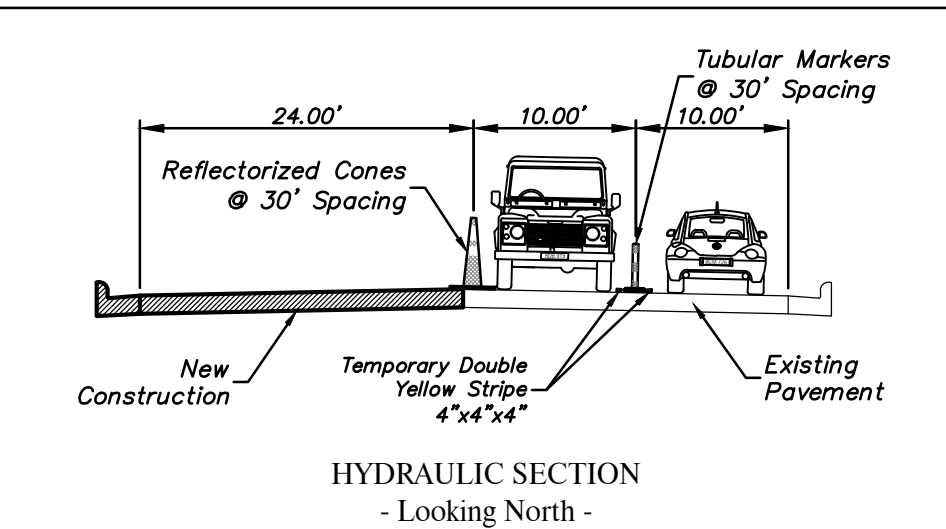
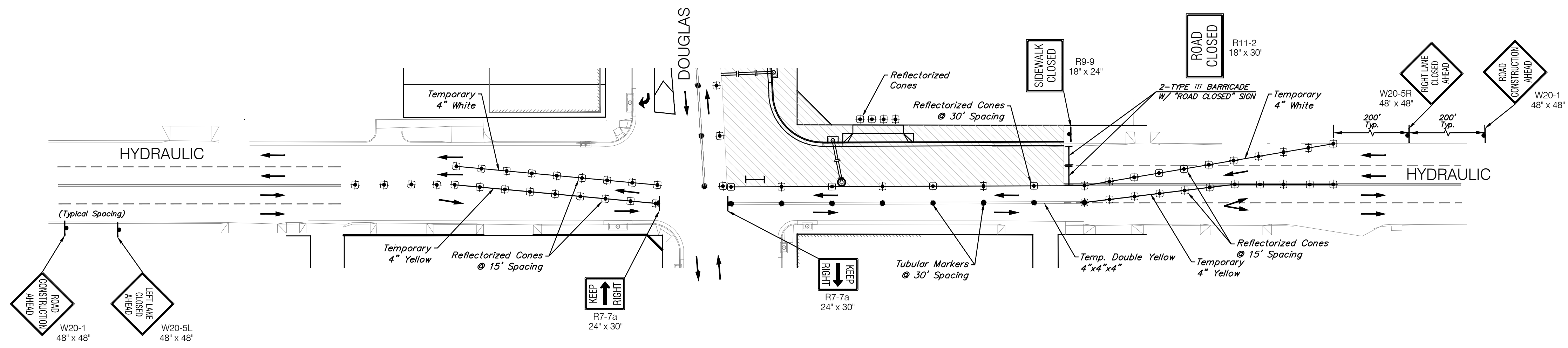
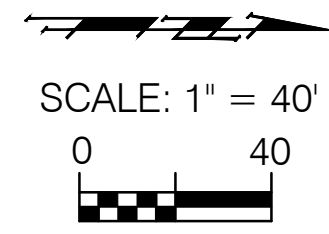


**NOTE:** INSTALL "NO LEFT TURN" SIGNS ON ALL FOUR DIRECTIONS IN INTERSECTION VISIBLE TO ONCOMING TRAFFIC

**NOTE:** REMOVE PAVEMENT MARKINGS AS NEEDED FOR LANE CHANGES LASTING > 3 CALENDAR DAYS



### Phase 1

Construct the North 1/2 of the West Leg of Douglas and the West 1/2 of the North Leg of Hydraulic.  
Two Way Traffic at All Times on Existing Pavement.  
No Left Turns Allowed.  
No Detours.

Drawing File: EA\Projects\Douglas (Washington to Grove)\Civil 3d\Douglas Base  
Design: Ken Klug  
Drawn: LP  
Approved: T Azicre  
Scale: Noted

Project No. 1307E933  
CAPITAL IMPROVEMENT PROJECT  
DOUGLAS & HYDRAULIC INT.  
Construction Sequence Phase 1  
DOUGLAS - WASHINGTON to GROVE

**Baughman Company, P.A.**  
315 Ellis St. Wichita, KS 67211 P 316-263-7271 F 316-262-0149  
ENGINEERING | SURVEYING | PLANNING | LANDSCAPE ARCHITECTURE