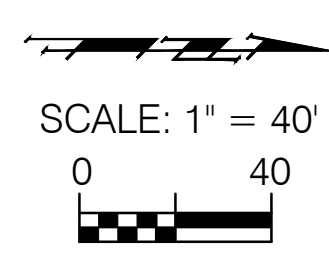


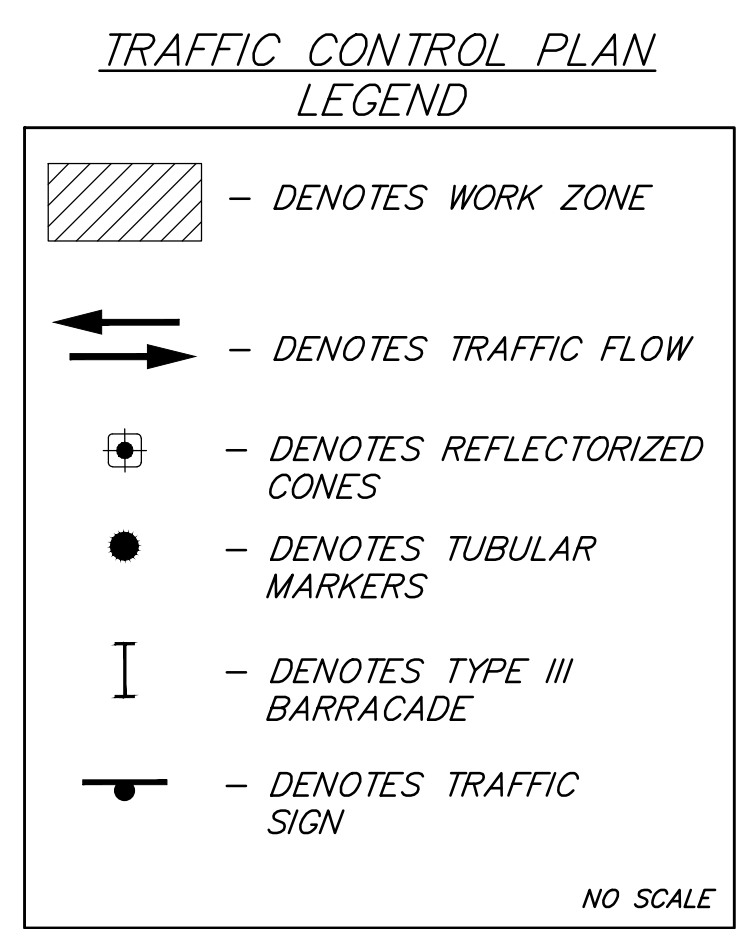
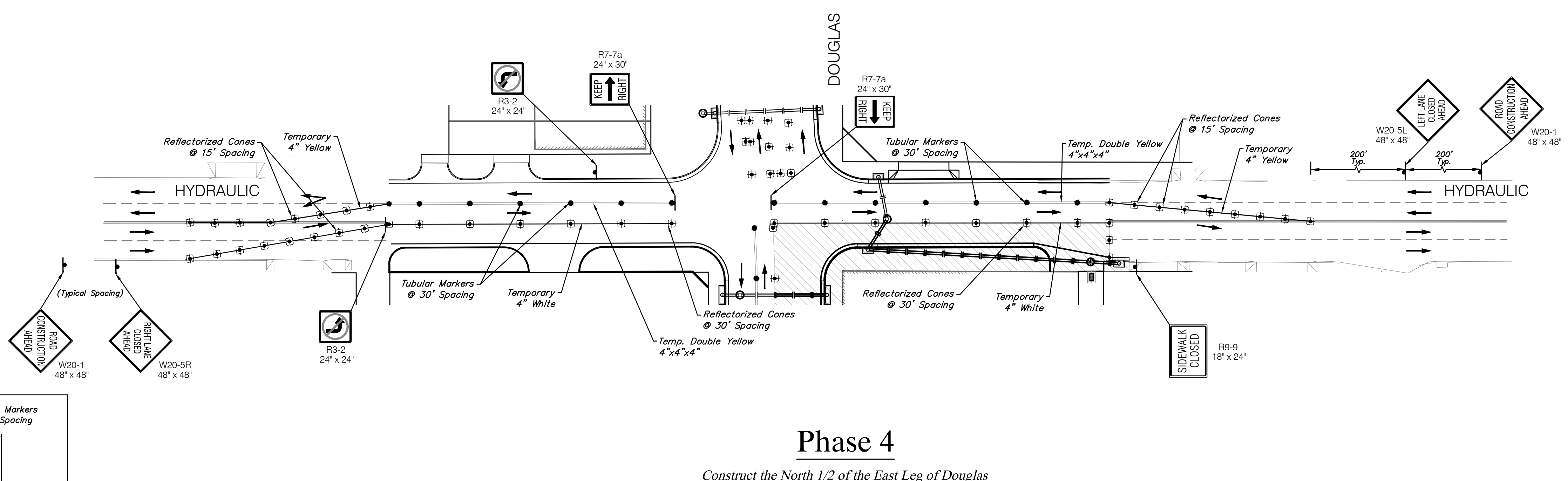
NOTE: INSTALL "NO LEFT TURN" SIGNS ON ALL FOUR DIRECTIONS IN INTERSECTION VISIBLE TO ONCOMING TRAFFIC

NOTE: REMOVE PAVEMENT MARKINGS AS NEEDED FOR LANE CHANGES LASTING > 3 CALENDAR DAYS



WIDTH COLOR	Quantities in Linear Feet					
	4" YELLOW	LEFT ARROWS	4" WHITE	6" WHITE	12" WHITE	24" WHITE
TOTALS	7000	-	5200	-	-	-

*For Information Only



Phase 4

Construct the North 1/2 of the East Leg of Douglas and the East 1/2 of the North Leg of Hydraulic.
Two Way Traffic at All Times on Existing and New Pavement.
No Left Turns Allowed.
No Detours.

Drawing File: E:\Projects\Douglas (Washington to Grove)\Civil 3d\Douglas Base
Design: Ken Klag
Drawn: LP
Approved: T Azicre
Scale: Noted

Project No. 1307E933
CAPITAL IMPROVEMENT PROJECT
DOUGLAS & HYDRAULIC INT.
Construction Sequence Phase 4
DOUGLAS - WASHINGTON to GROVE

Baughman Company, P.A.
315 Ellis St. Wichita, KS 67211 P 316-263-7271 F 316-262-0149
ENGINEERING | SURVEYING | PLANNING | LANDSCAPE ARCHITECTURE