

STORM WATER DRAIN #198

to serve

Tyler's Landing Addition

CITY OF WICHITA, KANSAS

Neil D. Cable, P.E. City Engineer

Project Number

468-83579

OCA Number

751330

GENERAL NOTES:

Contractor will be required to provide notice to utility companies a minimum of twenty-four (24) hours prior to any excavation, as follows:

1. The Contractor must notify the following in case of an emergency:

Kansas One-Call	687-2470
Cox Communications	262-4270
Kansas Gas Service	1-888-482-4950
Westar Energy	383-8650
Aquila Energy	1-800-303-0357
Southwestern Bell	268-2245
City of Wichita Water Dept.	268-4563
City of Wichita Sewer Maint.	268-4024
City of Wichita Storm Sewer Maint.	268-4090
City of Wichita Traffic Maint.	268-4034
Conoco Pipeline Co.	1-800-231-2551
Williams Pipeline Co.	529-6600
Phillips Pipeline Co.	1-800-766-8230

Underground utility service lines and overhead utility pole lines are to be adjusted as necessary by others prior to construction unless the plans specifically call for their adjustment by the Contractor or unless the plans specifically identify a utility to be adjusted by its owner during construction. Existing utilities and their location, as shown on the plans, represent the best information obtainable for design. The Contractor will be required to work around existing utilities within the right-of-way which do not conflict with proposed construction.

2. Trees and shrubs in public right-of-way which are in direct conflict with proposed new construction shall be removed by the Contractor with the Engineer's approval. Trees and shrubs which are not in direct conflict with proposed new construction shall be saved and protected from damage.
3. The Contractor shall give all property owners and/or tenants of developed property abutting the construction of this project a minimum of ten (10) days advance notice prior to start of construction.
4. The Contractor shall be responsible for preserving property irons. The Contractor will be required to re-establish any property irons which are damaged or destroyed by his construction operations. Such irons shall be reestablished by a licensed land surveyor in accordance with state laws.
- 5.

6. All areas disturbed during construction within Reserve "A", and Tyler Road R/W, shall be seeded, mulched, and fertilized as follows (Permanent Seeding):

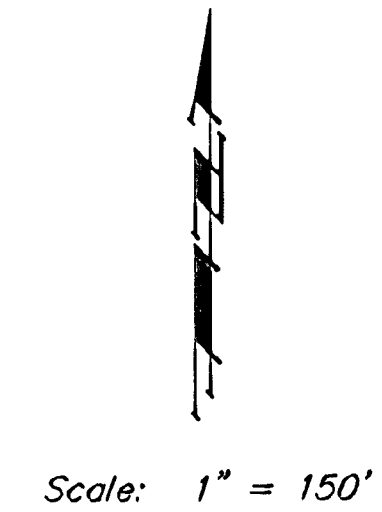
Seed: Kansas Premium Fescue Blend: 8 lbs./1000 sq. ft.
 Mulch: Prairie Hay: 2 tons/acre
 Fertilizer: 12-24-12: 850 lbs./acre

All other areas disturbed during construction outside of subdivision street R/W shall be seeded and mulched as follows (Temporary Seeding):

Seed: Rye Grass: 5 lbs./1000 Sq. Ft.
 Mulch: Prairie Hay: 2 tons/acre

All costs associated with seeding, mulching, and fertilizing shall be included in bid item "Project Seeding." All seeding operations shall conform to City of Wichita Standard Specifications.

7. All existing and proposed erosion control measures including silt fencing, erosion control mat, straw bales, inlet barriers, and const. entrance shall be maintained throughout construction by the contractor and until project is accepted by the City of Wichita. The on-site engineer shall complete weekly reports on the status of erosion control measures. The contractor shall be required to comply with maintenance and/or replacement of erosion control measures as determined by the on-site engineer until project is accepted by City of Wichita. Maintenance and/or replacement of erosion control measures to be paid by L.S. bid item "Erosion Control BMP's."
8. All excess excavation shall remain on-site and be stockpiled at a location determined by the engineer.
9. Rubble from the removal of miscellaneous structures and excess excavation which is to be wasted shall be disposed of on sites to be provided by the Contractor. These sites shall be approved by the Engineer as to suitability, appearance on site location. Locations, in the opinion of the Engineer, will leave an unsightly appearance will not be approved. All disposal sites must be approved by the Kansas Department of Health and Environment. Material either stockpiled or disposed of in a flood plain would require a Kansas State Board of Agriculture permit. Any material dumped in waters of the United States or wetlands is subject to U.S. Corps. of Engineers permitting regulations. Any material buried or stockpiled beyond approved construction limits would require additional archaeological investigations unless buried in a previously approved borrow location.



Booked
6-21-04
C-263

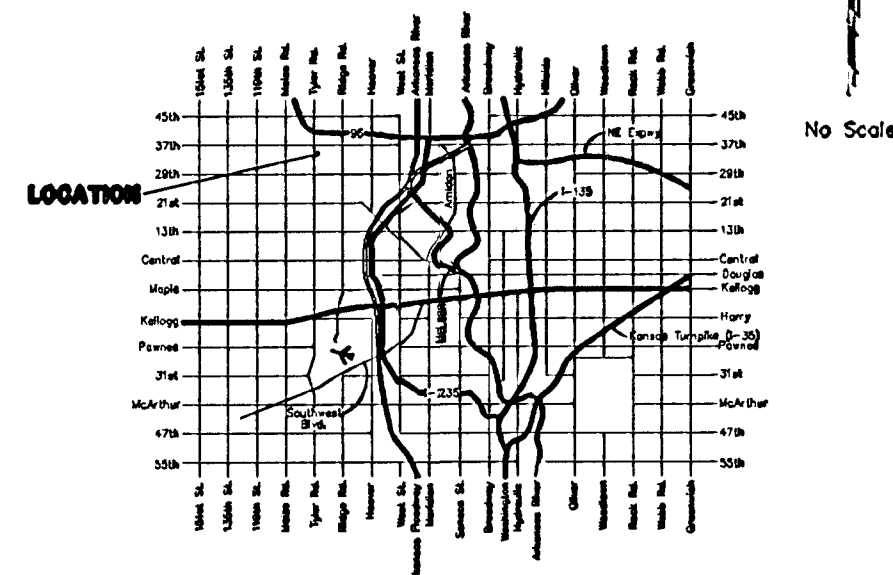
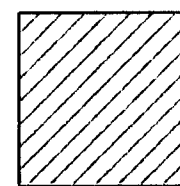
Sheet Index

Title Sheet	1
Lines 1 & 1A	2
Line 1	3-4
Line 1B	5
Lines 2 & 2A	6
Lines 2 & 2B	7
Line 2	8-10
Lines 3 & 4	11
Pond Plan #1 & #2	12
Mass Grading Plan	13-14
Std. Type 1A Single Inlet Detail	15
Std. Type 1A Double Inlet Detail	16
Inlet Manhole Detail	17
Standard Manhole Detail	18
Ring & Cover Detail	19
Headwall Detail	20
Standard Drop Inlet Detail	21
Special Yard Inlet Detail	22
Erosion Control Plan	23-24
Erosion Control BMP's	25-28
Special Shallow Manhole Detail	29
Pond Cross Sections	30-31
Copy of Plat	32

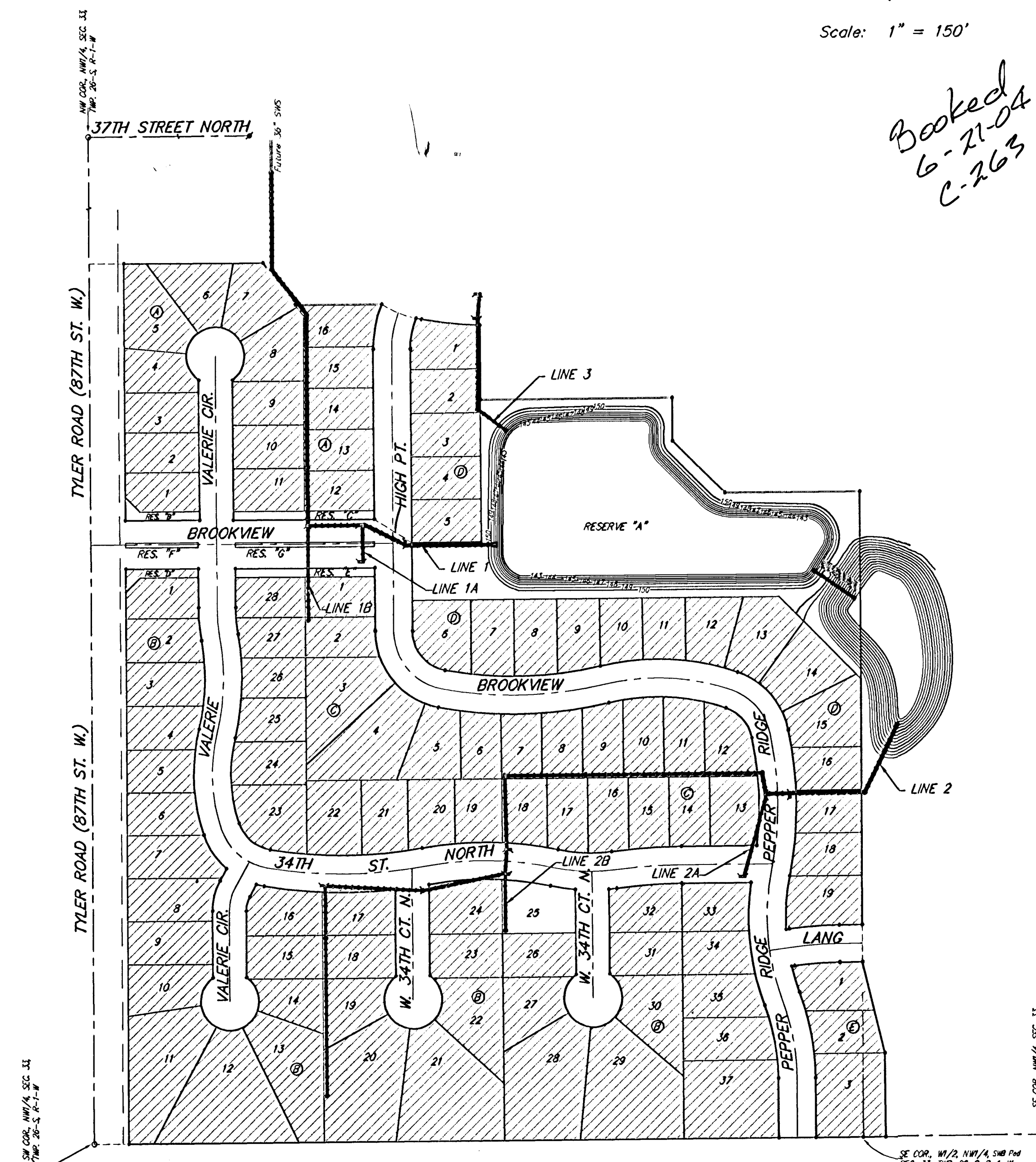
Benchmark:

- BENCHMARKS:
- BM #1: 80d Spike in West face of North High Line Pole in East R/W Tyler Road 1/2 mile of South of 37th Street North. Elev. = 176.05 City Datum (1363.45 NGVD)
- BM #2: "□" Cut Top of Curb on West of Northeast Corner Lot 23, Block side of Pepper Ridge 15± South of Forest Lakes West Addition. Elev. = 157.12 City Datum (1344.52 NGVD)

Benefit District



Vicinity Map



NO PLAN CHANGES - KK 10/03

BAUGHMAN COMPANY P.A.
 ENGINEERING, SURVEYING, & PLANNING
 318-282-7271 • 315 ELUS • WICHITA, KANSAS 67211