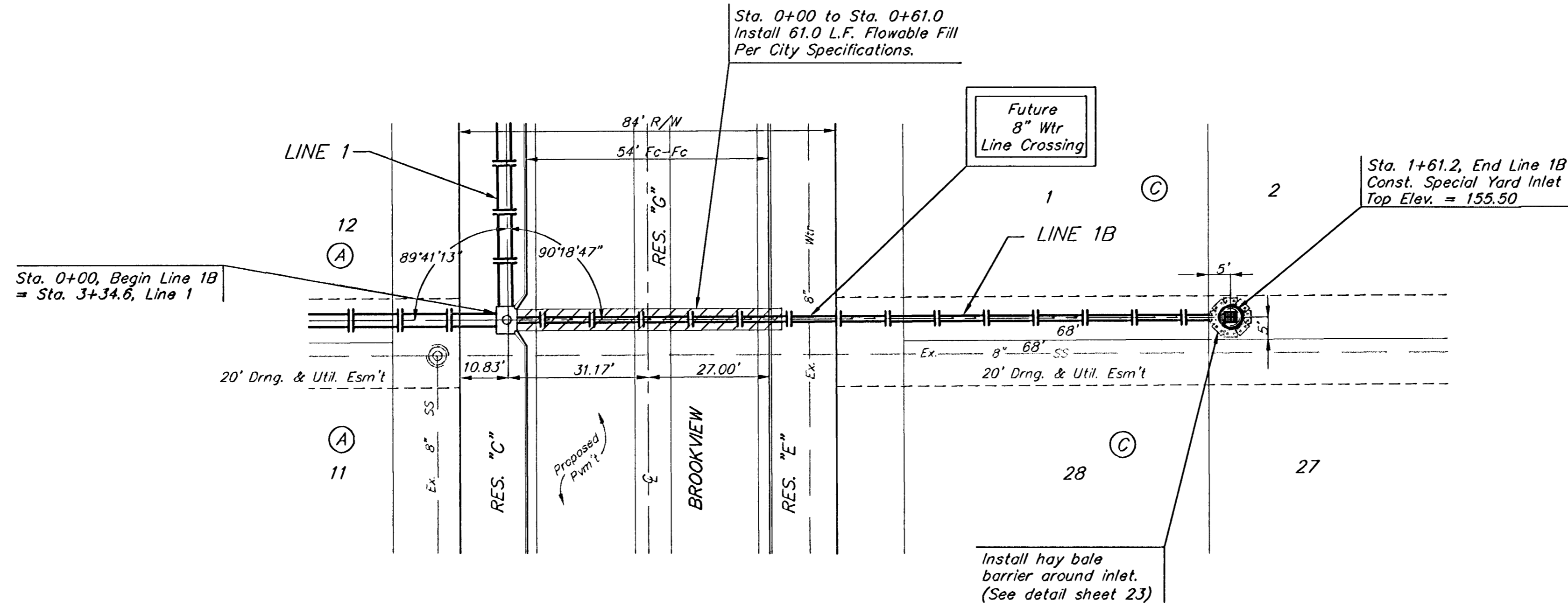
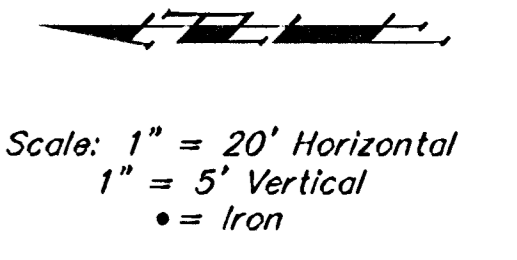


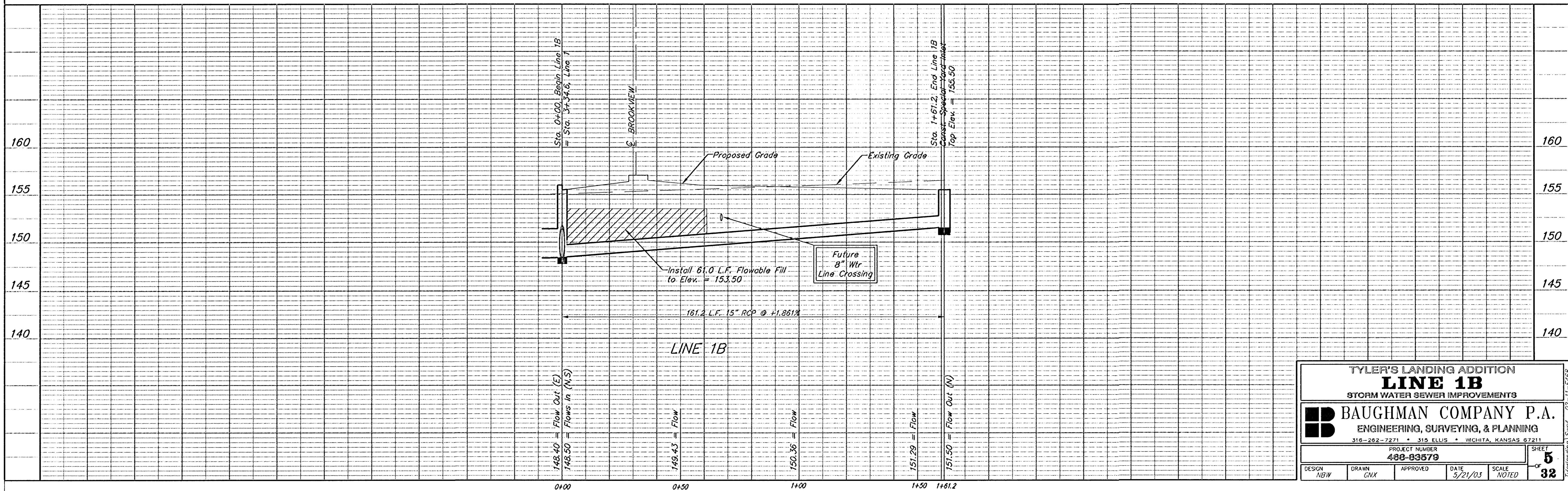
BENCHMARKS:

- BM #1: 80d Spike in West face of North High Line Pole in East R/W Tyler Road 1/2 mile of South of 37th Street North. Elev. = 176.05 City Datum (1363.45 NGVD)
- BM #2: "□" Cut Top of Curb on West side of Pepper Ridge 15'± South of Northeast Corner Lot 23, Block 5, Forest Lakes West Addition. Elev. = 157.12 City Datum (1344.52 NGVD)

TYLER'S LANDING ADDITION



TYLER'S LANDING ADDITION



TYLER'S LANDING ADDITION				
LINE 1B				
STORM WATER SEWER IMPROVEMENTS				
BAUGHMAN COMPANY P.A. ENGINEERING, SURVEYING, & PLANNING 316-262-7271 • 315 ELLIS • WICHITA, KANSAS 67211				
PROJECT NUMBER 488-83878				SHEET 5
DESIGN NBW	DRAWN GNX	APPROVED	DATE 3/21/03	SCALE NOTED
				OF 32

Tyler's Landing Sewer 02-11-E668