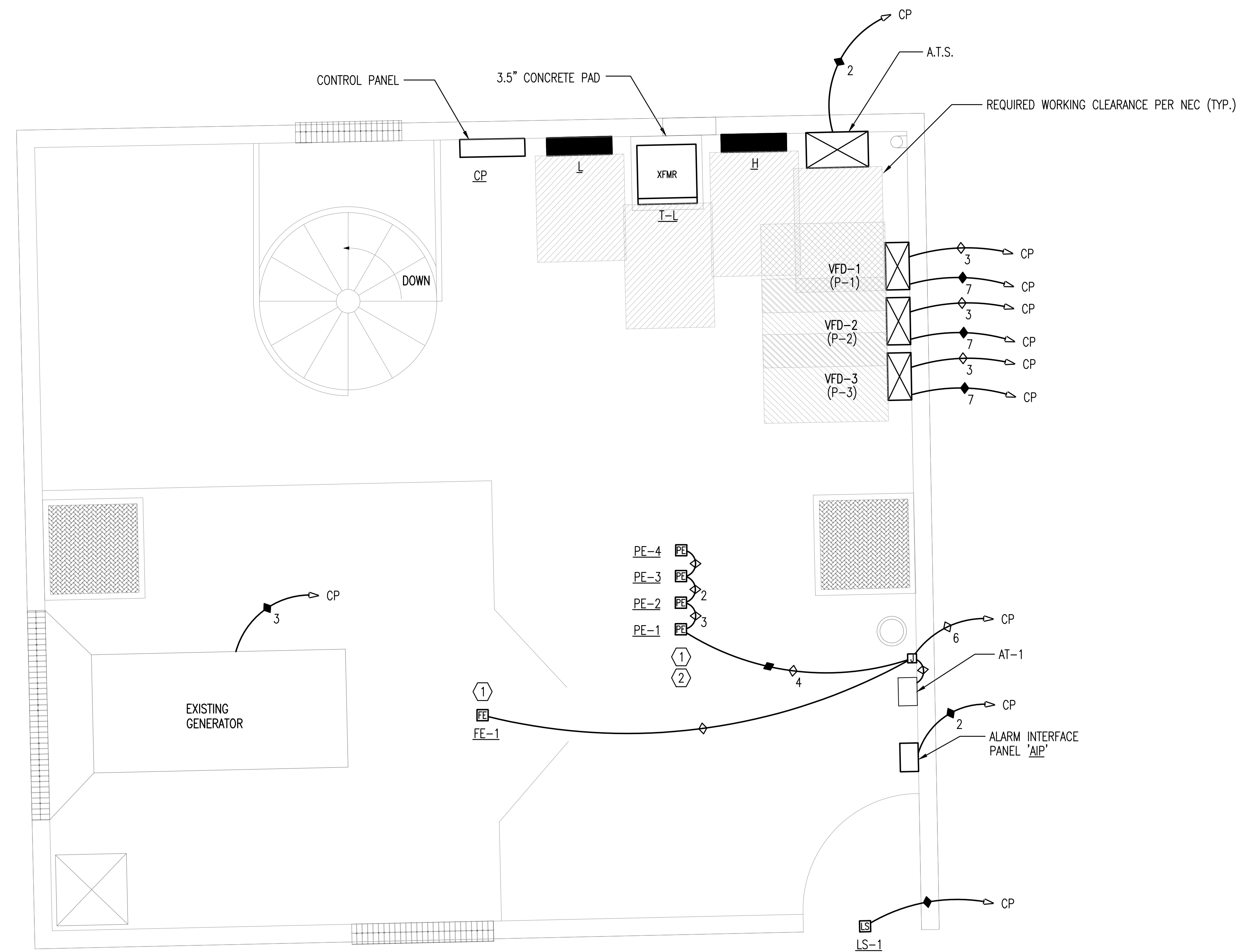


CONTROL PLAN NOTES:

- CONTROL JUNCTION BOXES SHALL BE SIZED PER THE N.E.C. AS A MINIMUM.
- RUN ALL CONTROL CABLES IN SEPARATE CONDUITS FROM POWER CIRCUITS. RUN SHIELDED CABLES (ANALOG) AND LAN CABLES IN SEPARATE CONDUIT FROM OTHER CONTROL CABLES (DISCRETE).
- SEE CONTROL CABLES CONDUIT SCHEDULE FOR CONTROL CABLE CONDUIT SIZING REQUIREMENTS.
- FURNISH AND INSTALL ALL CONDUIT AND WIRING AS REQUIRED FOR COMPLETE FUNCTIONALITY OF EQUIPMENT AS SPECIFIED AND AS IDENTIFIED BY THE MANUFACTURER. COORDINATE FIELD WIRING REQUIREMENTS WITH EQUIPMENT MANUFACTURER.
- REFER TO CIVIL DRAWINGS AND SECTIONS FOR EXACT EQUIPMENT LOCATIONS.
- LOCATE CONTROLS CONDUIT AND JUNCTION BOXES SO AS NOT TO INTERFERE WITH EQUIPMENT OPERATION, MAINTENANCE, OR REPLACEMENT.
- A CONDUIT FOR ANALOG CABLE SHALL TERMINATE IN EQUIPMENT ENCLOSURE AS CLOSE AS POSSIBLE TO THE TERMINALS. CABLES SHALL NOT PASS NEAR TO CABLES OR EQUIPMENT OPERATING ABOVE 24V.
- INTERNAL AND EXTERNAL I/O SHALL BE LANDED ON TERMINAL STRIPS.
- I/O IDENTIFIED ON CONTROL DIAGRAM SHEETS ARE FOR INPUTS & OUTPUTS EXTERNAL TO THE EQUIPMENT CONTROL PANEL. I/O NECESSARY FOR THE COMPLETE FUNCTIONALITY OF THE EQUIPMENT (INTERNAL I/O) SHALL BE PROVIDED BY THE EQUIPMENT MANUFACTURER. THE CONTRACTOR SHALL FURNISH & INSTALL CONDUIT AND WIRE REQUIRED FOR COMPLETE FUNCTIONALITY OF EQUIPMENT AS SPECIFIED AND AS IDENTIFIED BY THE MANUFACTURER. THE CONTRACTOR SHALL COORDINATE WITH EQUIPMENT MANUFACTURER TO DETERMINE FIELD WIRING REQUIREMENTS.
- IN WET WELL: PROVIDE STAINLESS STEEL KELLEMS STRAIN RELIEF SUPPORTED FROM TOP WET WELL FOR PUMP CABLES AND LEVEL CONTROL SYSTEM. PROVIDE STAINLESS STEEL HOOKS IN STRUCTURE TO ACCEPT GRIP EYES

KEYED NOTES:

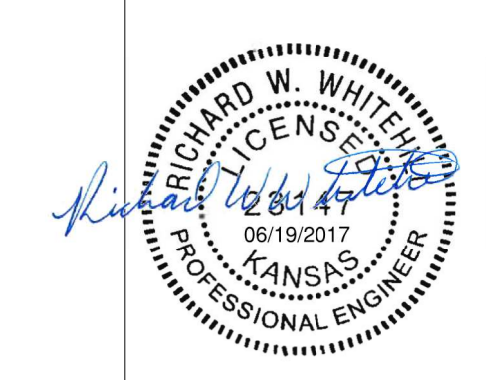
- PE-1, PE-2, PE-3 AND FE-1 LOCATED IN VALVE VAULT.
- VALVE VAULT IS CLASS 1 DIV 2 SPACE. ALL CONDUITS ENTERING VALVE VAULT SHALL CONTAIN SEAL OFFS.



A ELECTRICAL CONTROL PLAN

SCALE:
0" 2" 4"
1/2" = 1'-0"

Saved: 06-19-2017 2:36:21 PM by JAMES GILLESPIE
 Plot Scale: 1:1 06-19-2017 2:40:31 PM by JAMES GILLESPIE
 U:\Wichita-Civil\2016\160316\001\Elec\Drawings\160316-001-E6.1 ELECTRICAL CONTROL PLAN



No.	Revision	By	Date
LIFT STATION REHABILITATION 31ST STREET SOUTH AND GLENN AVENUE ELECTRICAL CONTROL PLAN GARY JANZEN, P.E. - CITY ENGINEER CITY OF WICHITA PROJECT NO. 468-85136			
		PROFESSIONAL ENGINEERING CONSULTANTS, P.A. 303 SOUTH TOPEKA WICHITA, KS 67202 316-262-2691 www.pec1.com	
Designed by	RWW	Job No.	35-160316-1-0042
Drawn by	JBG	Date	JUNE 2017
			Sht. E6.1