

BENCHMARKS:
 BM #1: 80d Spike in West face of North High Line Pole in East R/W Tyler Road 1/2 mile of South of 37th Street North. Elev. = 176.05 City Datum (1363.45 NGVD)

BM #2: "□" Cut Top of Curb on West side of Pepper Ridge 15± South of Northeast Corner Lot 23, Block 5, Forest Lakes West Addition. Elev. = 157.12 City Datum (1344.52 NGVD)

POND DATA:
 STATIC POOL ELEVATION: 138.10 msl
 BOTTOM ELEVATION: 136.00 msl

Sta. 0+64.2, Begin Line 2
 Begin Construction of 36" SWS W/36" R.C. Headwall-Install 24 S.Y. of Light Stone Riprap.

Sta. 1+85.9, Line 2
 Const. Std. Manhole (6' Dia.)
 Top Elev. = 151.20

Caution:
 Ex. 8" SS
 Line Crossing

Sta. 3+15.6, Line 2
 Const. Std. Type 1A
 Double Curb Inlet (10'x3')
 Top Elev. = 152.00

Sta. 3+15.6 to Sta. 3+58.3
 Install 42.7 L.F. Flowable Fill Per City Specifications.

Sta. 3+58.3, Line 2 = Sta. 0+00, Line 2A
 Const. Std. Type 1A
 Double Curb Inlet (10'x5')
 Top Elev. = 152.00
 Match Point

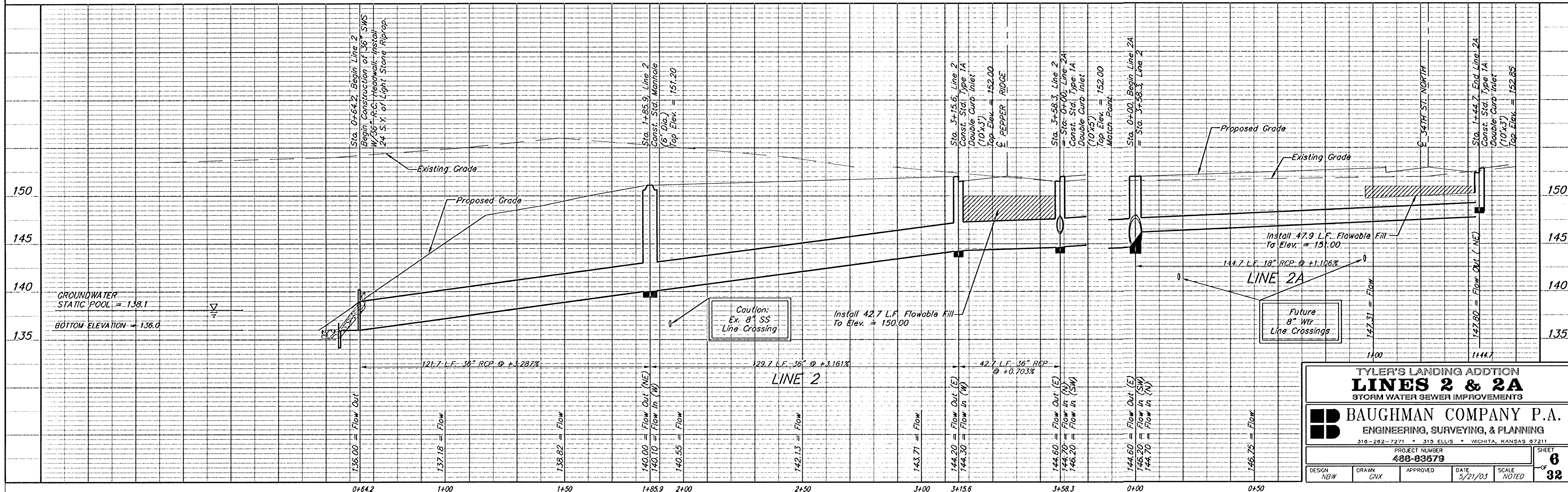
Sta. 1+44.8, End Line 2A
 Const. Std. Type 1A
 Double Curb Inlet (10'x3')
 Top Elev. = 152.85

TYLER'S LANDING ADDITION

TYLER'S LANDING ADDITION

Sta. 0+96.8 to Sta. 1+44.7
 Install 47.9 L.F. Flowable Fill Per City Specifications.

Scale: 1" = 20' Horizontal
 1" = 5' Vertical
 • = Iron



TYLER'S LANDING ADDITION
LINES 2 & 2A
 STORM WATER SEWER IMPROVEMENTS

BAUGHMAN COMPANY P.A.
 ENGINEERING, SURVEYING, & PLANNING
 316-262-7271 • 310 ELLIS • WICHITA, KANSAS 67211

PROJECT NUMBER
488-83579

DESIGN: NBW DRAWN: GVK APPROVED: DATE: 5/21/03 SCALE: NOTED

SHEET **6** OF **32**