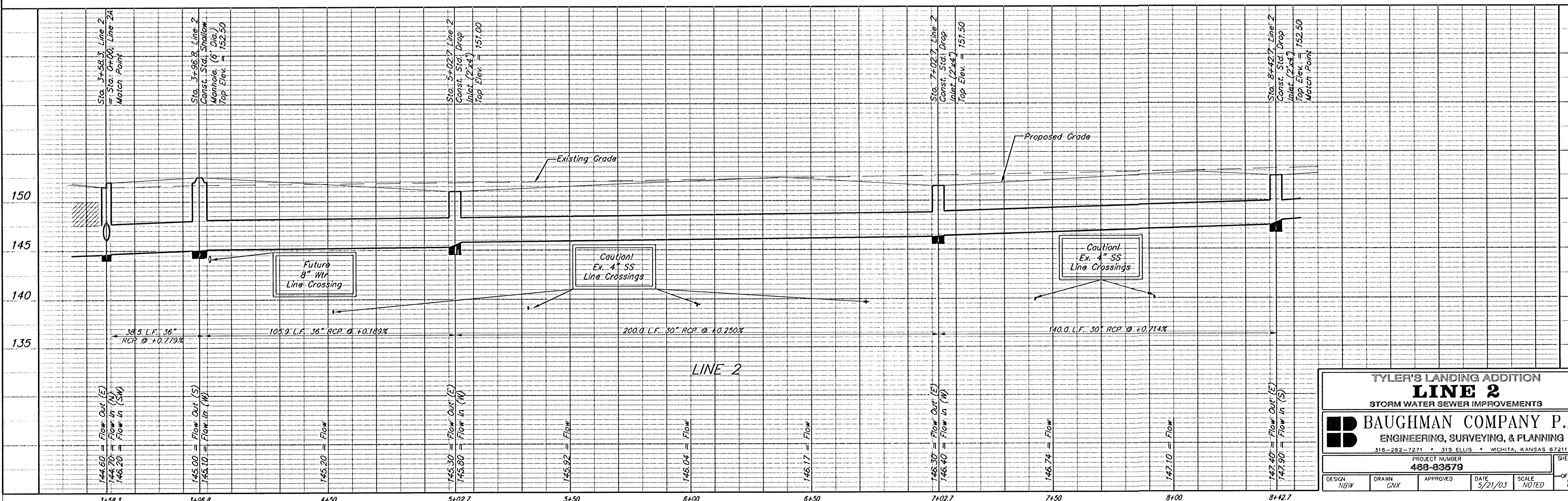
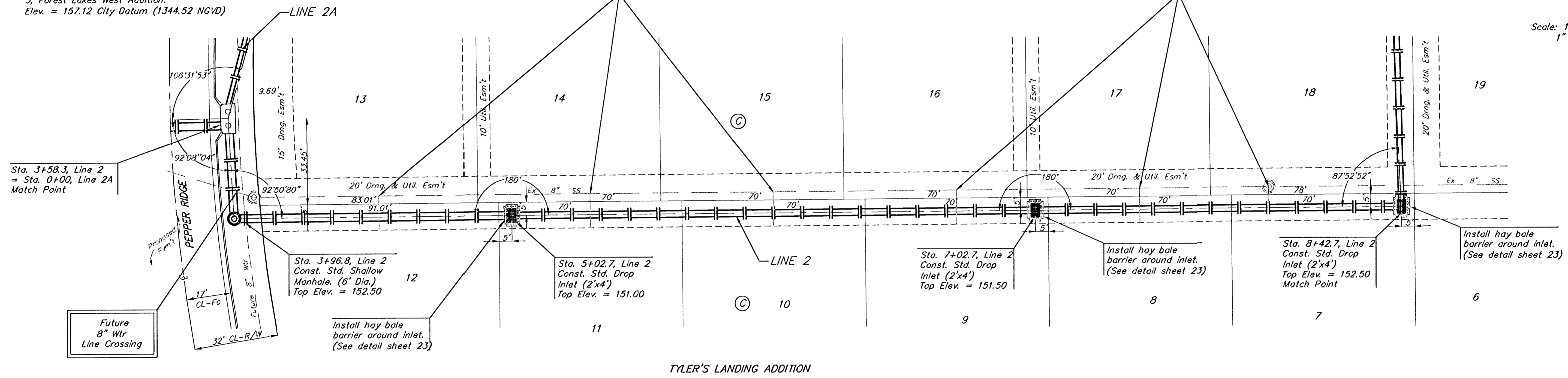


**BENCHMARKS:**

BM #1: 80d Spike in West face of North High Line Pole in East R/W Tyler Road 1/2 mile of South of 37th Street North. Elev. = 176.05 City Datum (1363.45 NGVD)

BM #2: "□" Cut Top of Curb on West side of Pepper Ridge 15'± South of Northeast Corner Lot 23, Block 5, Forest Lakes West Addition. Elev. = 157.12 City Datum (1344.52 NGVD)

Scale: 1" = 20' Horizontal  
1" = 5' Vertical  
● = Iron



TYLER'S LANDING ADDITION  
**LINE 2**  
STORM WATER SEWER IMPROVEMENTS

**BAUGHMAN COMPANY P.A.**  
ENGINEERING, SURVEYING, & PLANNING  
316-262-7271 • 315 ELLIS • WICHITA, KANSAS 67211

PROJECT NUMBER: **488-83578**

DESIGN: NBW | DRAWN: CNX | APPROVED: [ ] | DATE: 5/21/03 | SCALE: NOTED

SHEET **7** OF **32**