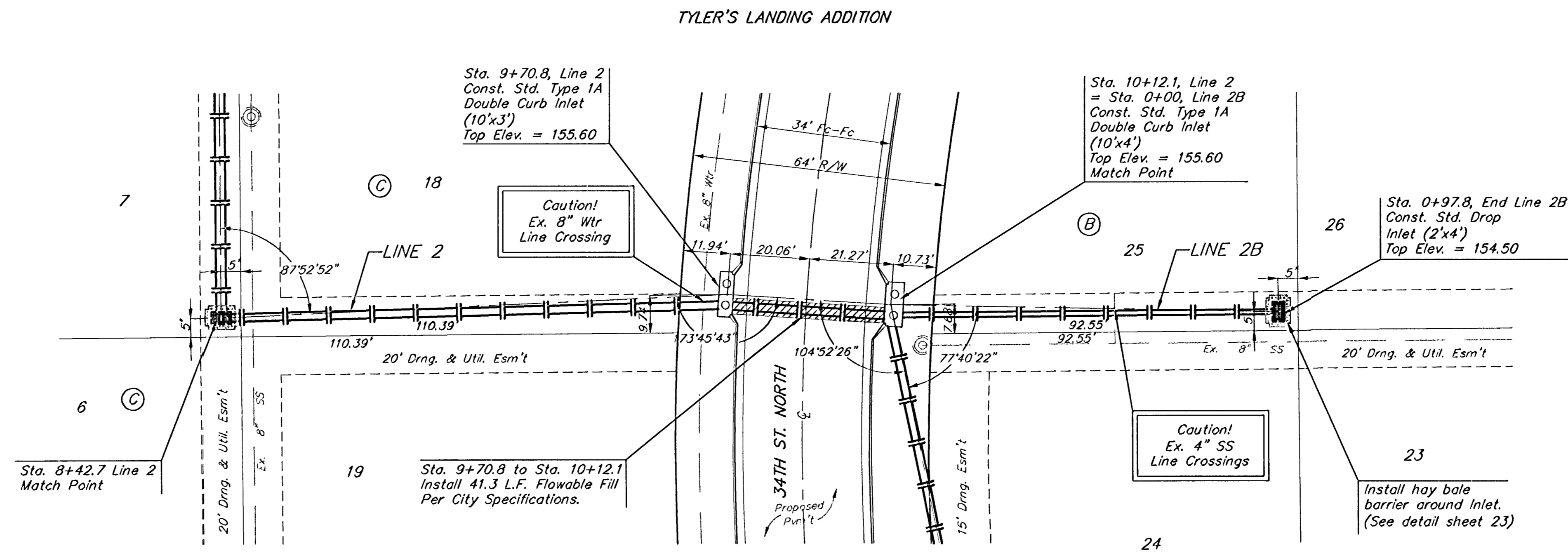
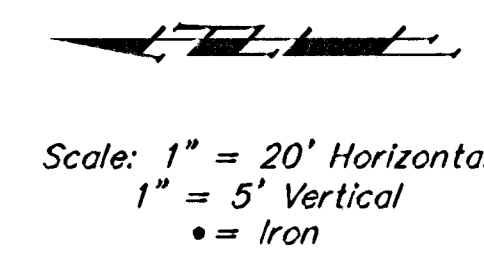


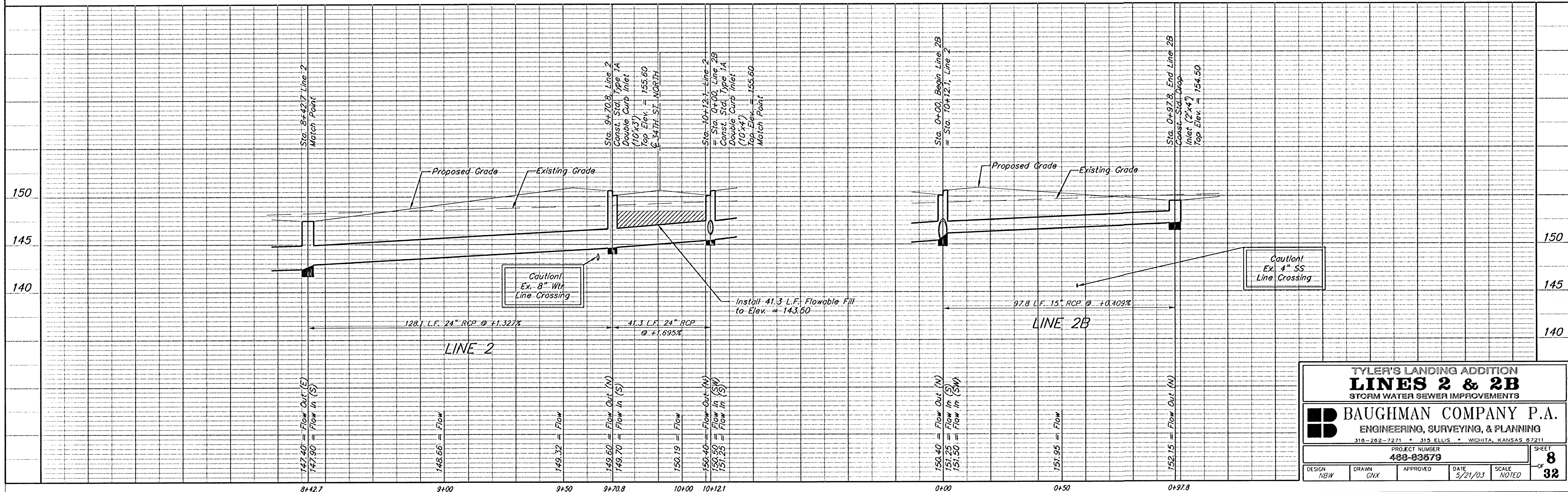
BENCHMARKS:

BM #1: 80d Spike in West face of North High Line Pole in East R/W Tyler Road 1/2 mile of South of 37th Street North. Elev. = 176.05 City Datum (1363.45 NGVD)

BM #2: "□" Cut Top of Curb on West side of Pepper Ridge 15± South of Northeast Corner Lot 23, Block 5, Forest Lakes West Addition. Elev. = 157.12 City Datum (1344.52 NGVD)



TYLER'S LANDING ADDITION



TYLER'S LANDING ADDITION LINES 2 & 2B STORM WATER SEWER IMPROVEMENTS			
BAUGHMAN COMPANY P.A. ENGINEERING, SURVEYING, & PLANNING 318-262-7271 • 315 ELLIS • WICHITA, KANSAS 67211			
PROJECT NUMBER		SHEET	
488-83579		8	
DESIGN	DRAWN	APPROVED	DATE
NBW	GNX		5/21/03
		SCALE	NOTED
		32	

02-12-ET668
TylerLanding_Sws7