

BENCHMARKS:
 "X" CUT ON TOP OF CURB INLET NORTH SIDE OF CENTRAL 96' W. OF WESTERN PROPERTY LINE OF CASTLEGATE ADDITION.
 N: 4997.42 E: 4999.10
 ELEV. = 1341.99 (NAVD88)

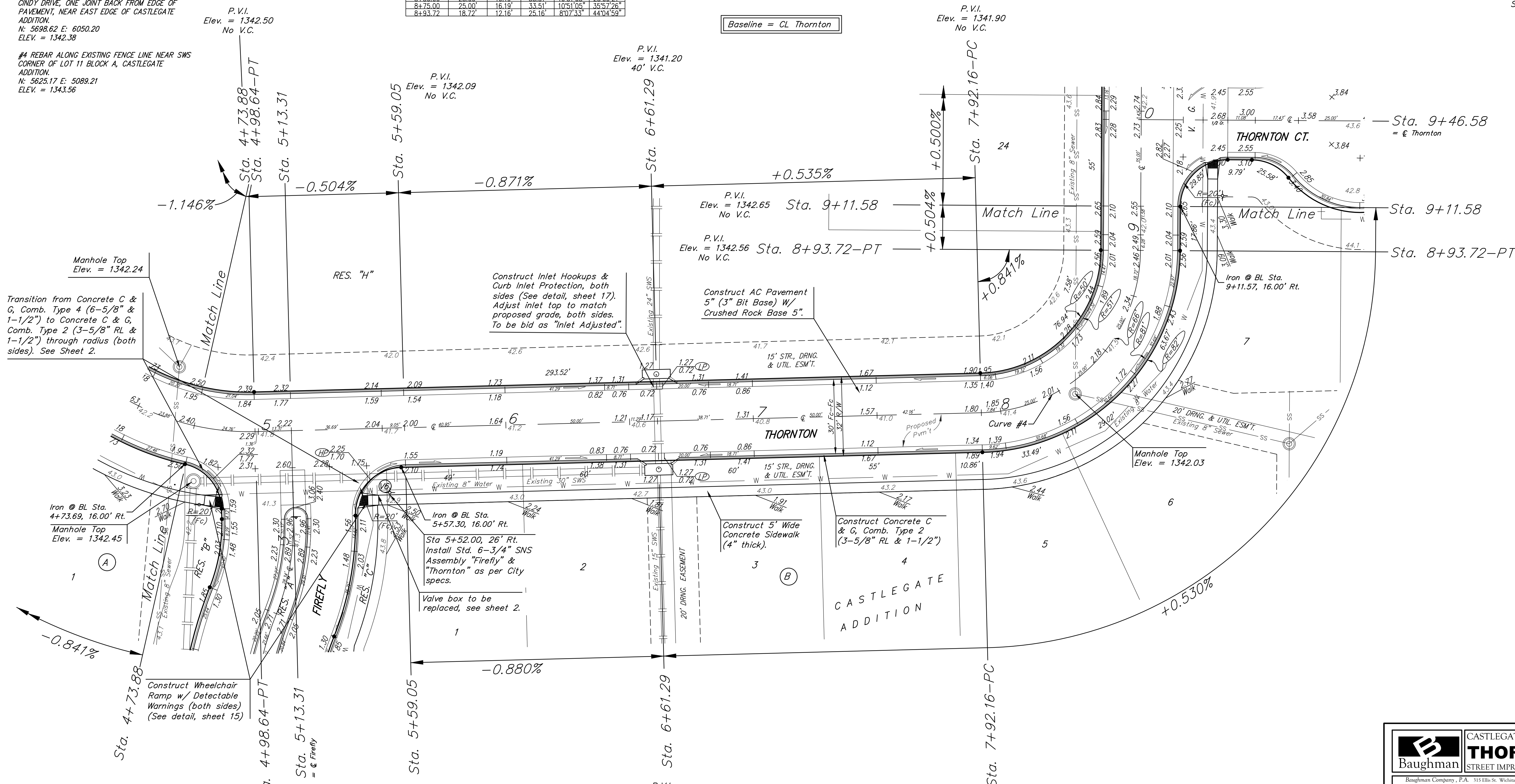
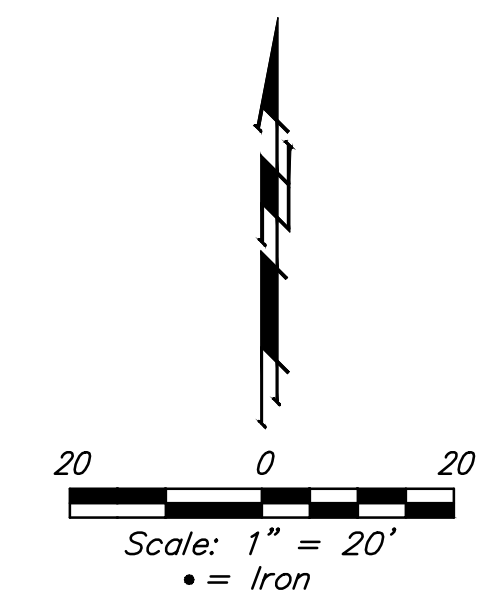
"X" CUT IN CURB INLET EAST SIDE OF AZURE ST. NEAR NORTH END OF CASTLEGATE ADDITION.
 N: 6320.08 E: 5589.16
 ELEV. = 1342.58 (NAVD88).

"X" CUT IN NORTH SIDE OF CURB ALONG EXISTING CINDY DRIVE, ONE JOINT BACK FROM EDGE OF PAVEMENT, NEAR EAST EDGE OF CASTLEGATE ADDITION.
 N: 5698.62 E: 6050.20
 ELEV. = 1342.38

#4 REBAR ALONG EXISTING FENCE LINE NEAR SWS CORNER OF LOT 11 BLOCK A, CASTLEGATE ADDITION.
 N: 5625.17 E: 5089.21
 ELEV. = 1343.56

Curve #4						
Curve Data Based on Centerline						
Rad. = 66'		Delta = 88°09'57"		Tangent = 63.92'		
Arc = 101.56'		L.C. = 91.83'		Def./Pt. = 26.04347 Min.		
Station	Arc	8' Left	8' Right	Defl.	Total Defl.	
7+92.16	-	-	-	0°00'00"	0°00'00"	
8+00.00	7.84'	5.10'	10.57'	3°24'11"	3°24'11"	
8+25.00	25.00'	16.19'	33.51'	10°51'05"	14°15'16"	
8+50.00	25.00'	16.19'	33.51'	10°51'05"	25°06'21"	
8+75.00	25.00'	16.19'	33.51'	10°51'05"	35°57'26"	
8+93.72	18.72'	12.16'	25.16'	8°07'53"	44°04'59"	

Baseline = CL Thornton



Transition from Concrete C & G, Comb. Type 4 (6-5/8" & 1-1/2") to Concrete C & G, Comb. Type 2 (3-5/8" RL & 1-1/2") through radius (both sides). See Sheet 2.

Construct Inlet Hookups & Curb Inlet Protection, both sides (See detail, sheet 17). Adjust inlet top to match proposed grade, both sides. To be bid as "Inlet Adjusted".

Construct AC Pavement 5" (3" Bit Base) W/ Crushed Rock Base 5".

Construct 5' Wide Concrete Sidewalk (4" thick).

Construct Concrete C & G, Comb. Type 2 (3-5/8" RL & 1-1/2")

Construct Wheelchair Ramp w/ Detectable Warnings (both sides) (See detail, sheet 15)

Valve box to be replaced, see sheet 2.

NOTE: ROLL TYPE CURB & GUTTER (TYPE 2) TO BE CONSTRUCTED ON THE PAVEMENT SHOWN ON THIS SHEET. TOP OF CURB ELEVATIONS ARE GIVEN FOR FULL HEIGHT CURB (TYPE 4).

	CASTLEGATE ADDITION	
	THORNTON STREET IMPROVEMENTS	
<small>Baughman Company, P.A. 315 Ellis St., Wichita, KS 67211 P 316-262-7271 F 316-262-0149 ENGINEERING SURVEYING PLANNING LANDSCAPE ARCHITECTURE</small>		
PROJECT NUMBER	DESIGN	DRAWN
	NBW/JS	TMS
REVISIONS:	APPROVED	DATE
	Noted	06/17
	SCALE	
	1" = 20'	
	SHEET	4 OF 32