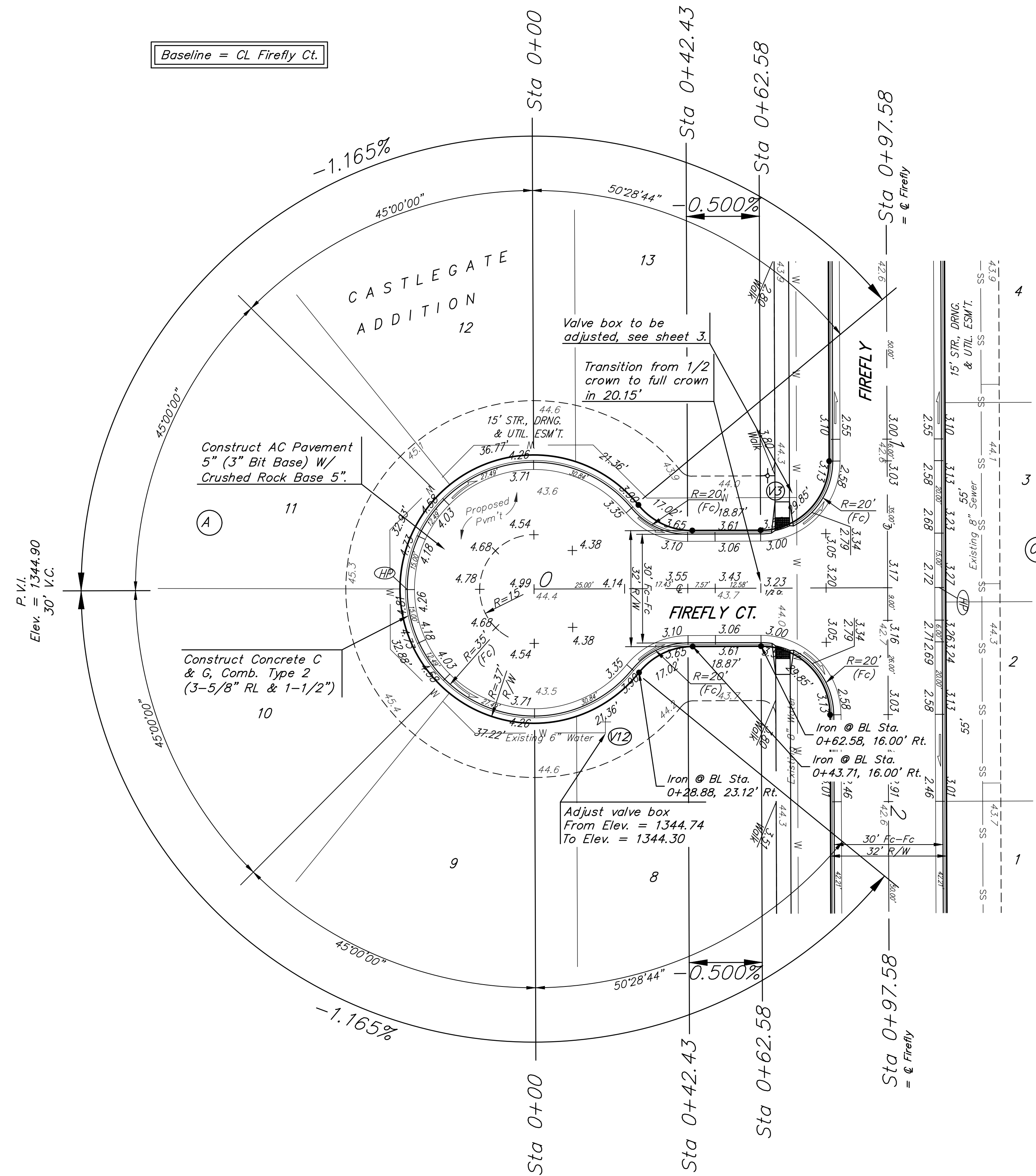
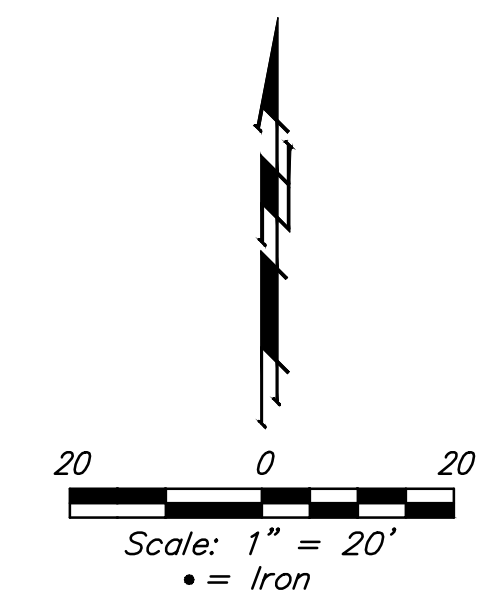


**BENCHMARKS:**  
 "X" CUT ON TOP OF CURB INLET NORTH SIDE OF CENTRAL 96' W. OF WESTERN PROPERTY LINE OF CASTLEGATE ADDITION.  
 N: 4997.42 E: 4999.10  
 ELEV. = 1341.99 (NAVD88)

"X" CUT IN CURB INLET EAST SIDE OF AZURE ST. NEAR NORTH END OF CASTLEGATE ADDITION.  
 N: 6320.08 E: 5589.16  
 ELEV. = 1342.58 (NAVD88).

"X" CUT IN NORTH SIDE OF CURB ALONG EXISTING CINDY DRIVE, ONE JOINT BACK FROM EDGE OF PAVEMENT, NEAR EAST EDGE OF CASTLEGATE ADDITION.  
 N: 5698.62 E: 6050.20  
 ELEV. = 1342.38

#4 REBAR ALONG EXISTING FENCE LINE NEAR SWS CORNER OF LOT 11 BLOCK A, CASTLEGATE ADDITION.  
 N: 5625.17 E: 5089.21  
 ELEV. = 1343.56



**WATER VALVE LOCATION TABLE**

VALVE NUMBER	STREET	BASELINE STATION	OFFSET DISTANCE	OFFSET DIRECTION
V1	Firefly	-0+41.06	33'	Rt.
V2	Firefly	0+30.00	25'	Rt.
V3	Firefly	1+16.00	25'	Rt.
V4	Firefly	3+59.63	25'	Rt.
V5	Firefly	4+07.69	25'	Rt.
V6	Thornton	5+45.32	25'	Rt.
V7	Thornton	9+75.40	25'	Rt.
V8	Thornton	10+57.58	25'	Rt.
V9	Thornton	12+13.58	25'	Rt.
V10	Thornton	12+89.57	25'	Rt.
V11	Thornton	13+14.50	25'	Rt.
V12	Firefly Ct. Lots 8-13, Block A	0+19.54	39.73'	Rt.
V13	Firefly Ct. Lots 2-7, Block A	0+19.98	39.73'	Rt.
V14	Thornton Ct.	0+72.96	39.73'	Rt.

Paving contractor will be responsible to operate all water valves on the project, in the presence of the inspector, to ensure accessibility to the valves, and that all valves (except blowoffs) are left in the "ON" position when the project is completed.

Subdivision Bench Marks		
Street & Station	Location Description	Elevation
Firefly 4+07.69, 15.25' Rt.	Adjacent to Fire Hydrant at SE End of S. Curb Return of Firefly & Firefly Ct. (Lots 2-7, Block A)	
Thornton 11+53.58, 15.25' Rt.	Adjacent to Fire Hydrant at common front lot corner of Lots 12 & 13, Block B.	

**NOTE:** ROLL TYPE CURB & GUTTER (TYPE 2) TO BE CONSTRUCTED ON THE PAVEMENT SHOWN ON THIS SHEET. TOP OF CURB ELEVATIONS ARE GIVEN FOR FULL HEIGHT CURB (TYPE 4).

	CASTLEGATE ADDITION	
	<b>FIREFLY CT.</b>	
LOTS 8-13, BLOCK A		
<small>Baughman Company, P.A. 315 Ellis St., Wichita, KS 67211 P 316-262-7271 F 316-262-0149          ENGINEERING   SURVEYING   PLANNING   LANDSCAPE ARCHITECTURE</small>		
PROJECT NUMBER	DESIGN	DRAWN
	NBW/JS	TMS
REVISIONS:	APPROVED	DATE
		06/17
	SCALE	
	Noted	
	SHEET	
		<b>6 OF 32</b>
<small>Str Plans.dwg</small>		