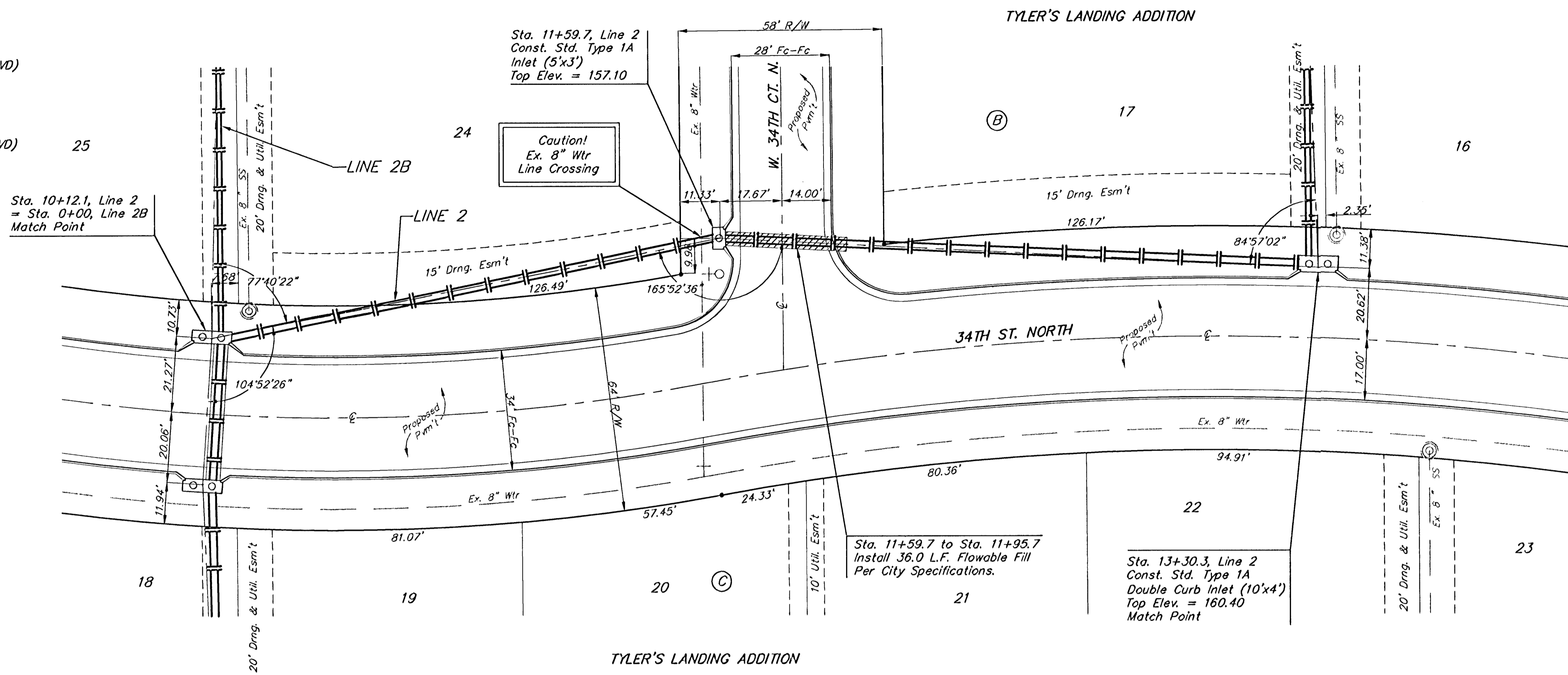


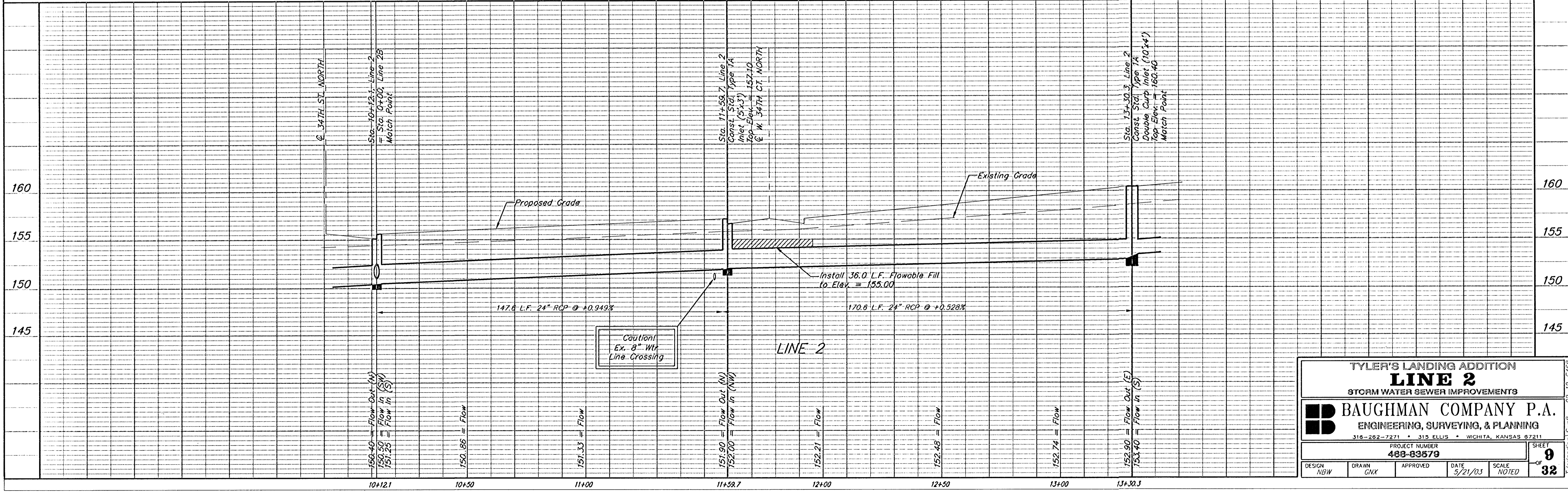
BENCHMARKS:

BM #1: 80d Spike in West face of North High Line Pole in East R/W Tyler Road 1/2 mile South of 37th Street North. Elev. = 176.05 City Datum (1363.45 NGVD)

BM #2: "□" Cut Top of Curb on West side of Pepper Ridge 15'± South of Northeast Corner Lot 23, Block 5, Forest Lakes West Addition. Elev. = 157.12 City Datum (1344.52 NGVD)



Scale: 1" = 20' Horizontal
1" = 5' Vertical
• = Iron



TYLER'S LANDING ADDITION LINE 2 STORM WATER SEWER IMPROVEMENTS			
BAUGHMAN COMPANY P.A. ENGINEERING, SURVEYING, & PLANNING 316-262-7271 • 315 ELLIS • WICHITA, KANSAS 67211			
PROJECT NUMBER 488-83579		SHEET 9 OF 32	
DESIGN NGW	DRAWN CHX	APPROVED	DATE 3/21/03
		SCALE NOTED	

Tyler's Landing Sewer 02-12-468