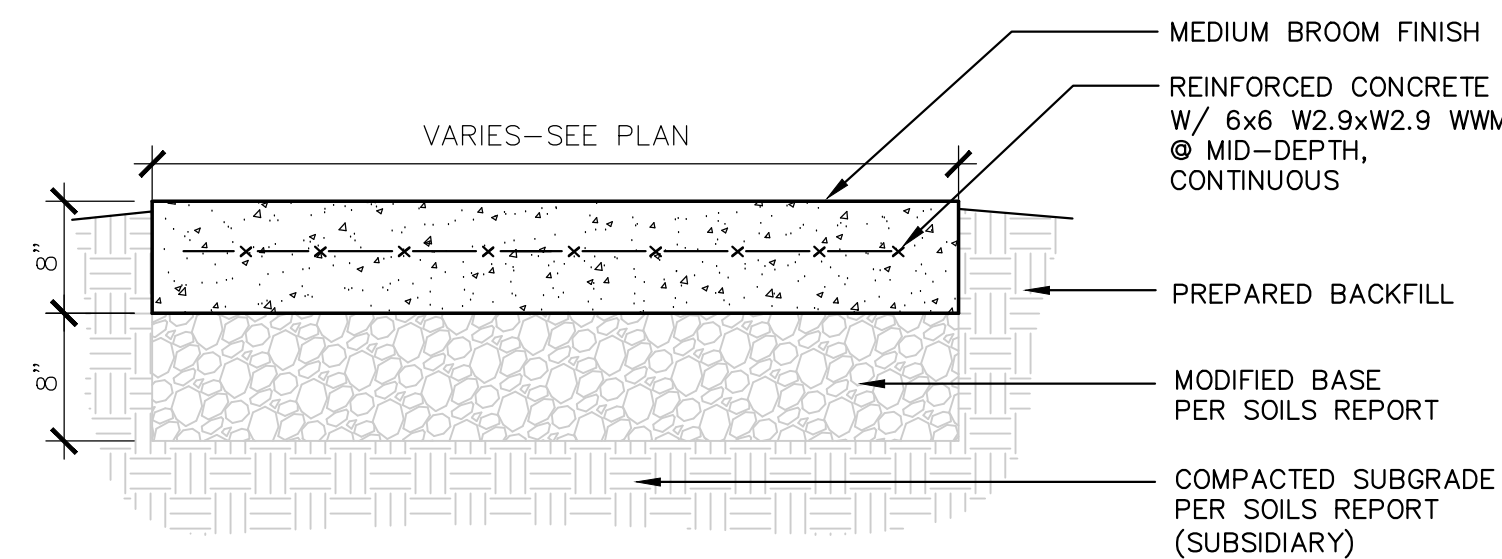


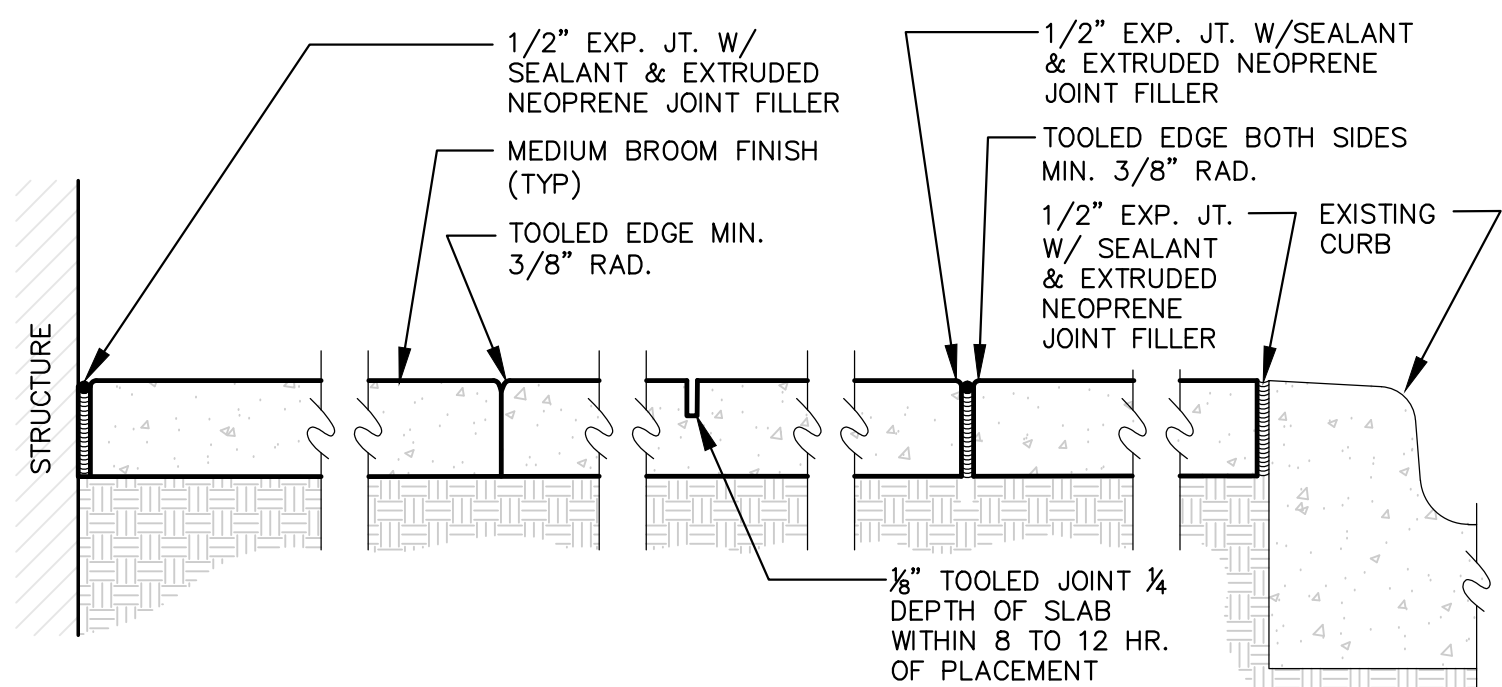
# 1 CONCRETE SIDEWALKS

1" = 1'-0"



# 2 CONCRETE PAVING

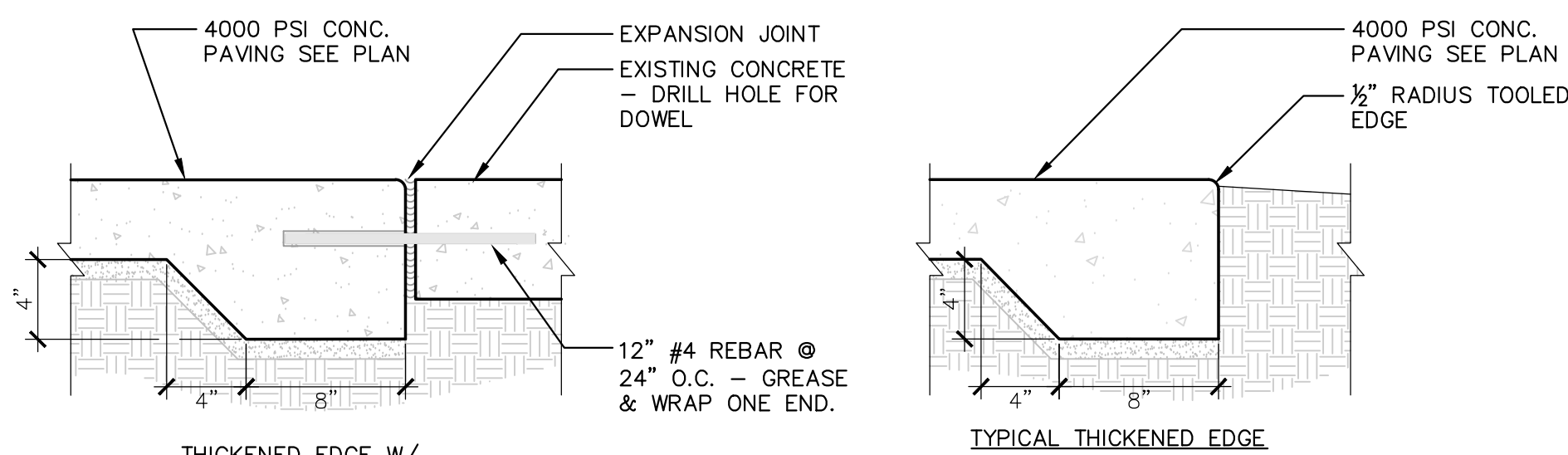
8" REINFORCED 1" = 1'-0"



# 3 SIDEWALK JOINTING

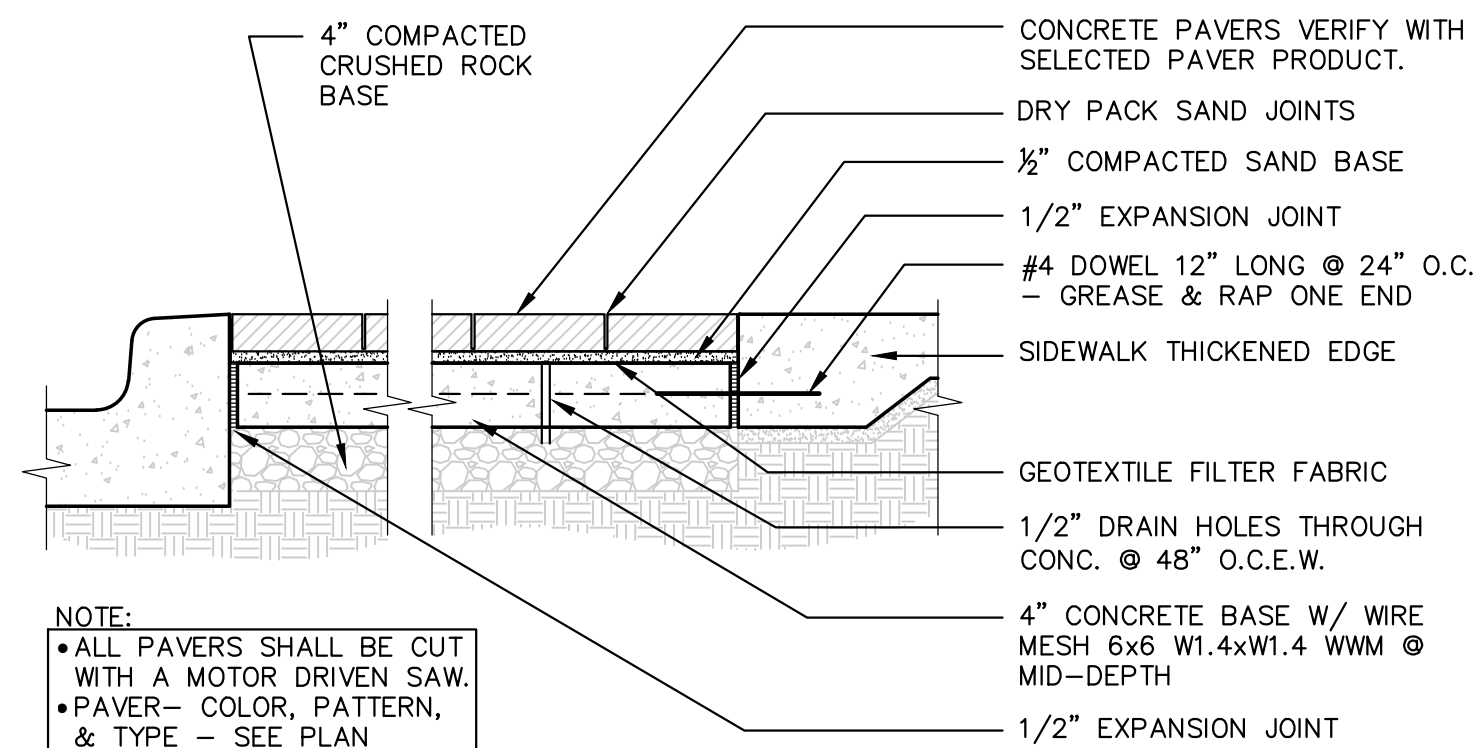
1 1/2" = 1'-0"

- 1/2" EXPANSION JOINT FOR CONCRETE WALK SHALL BE "SONOLASTIC EXPANSION JOINT FILLER" (GRAY): SONNEBORN, CHEMREX INC. OR APPROVED EQUIVALENT
- SEALANT SHALL BE MULTI-PART POURABLE URETHANE SEALANT: "POURTHANE"; W.R. MEADOWS, INC. OR APPROVED EQUIVALENT.
- ALL LABOR AND MATERIALS FOR EXPANSION AND CONTRACTION JOINTS SHALL BE SUBSIDIARY TO CONCRETE SIDEWALK.



# 4 SIDEWALK THICKENED EDGE DETAILS

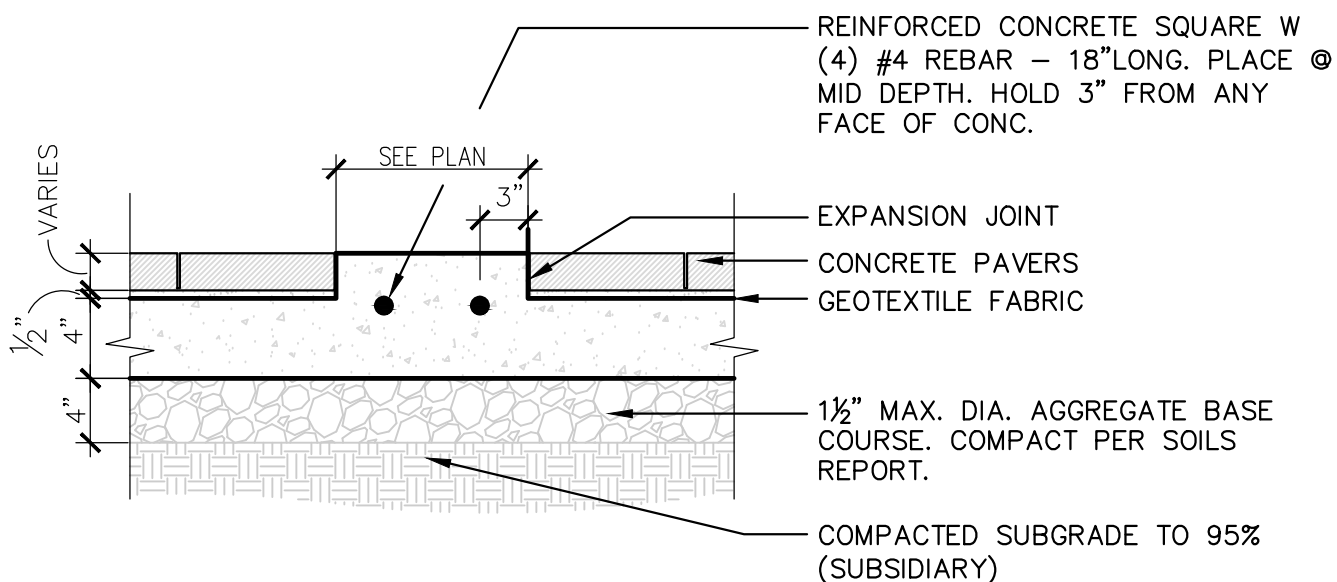
1 1/2" = 1'-0"



# 5 CONCRETE PAVER DETAIL

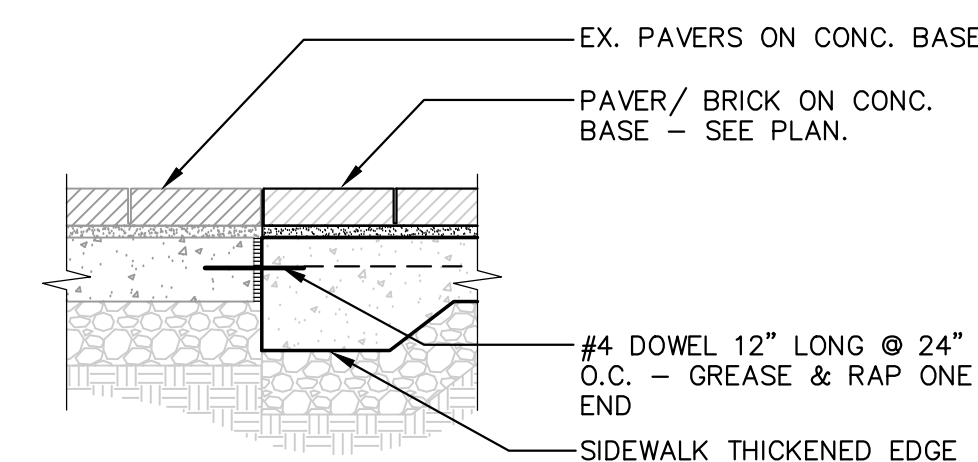
CONCRETE BASE - TYPICAL INSTALLATION

1" = 1'-0"



# 6 CONCRETE BAND IN PAVER FIELD

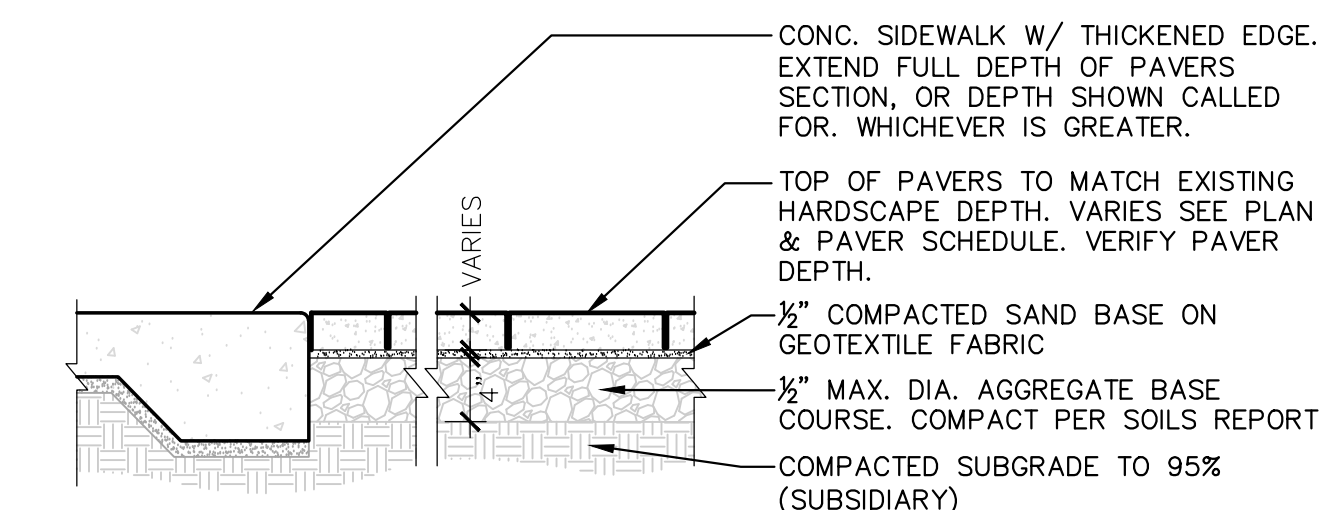
1" = 1'-0"



# 7 PAVER INTERFACE

TYPICAL INSTALLATION OF EXISTING PAVERS TO PROPOSED PAVERS

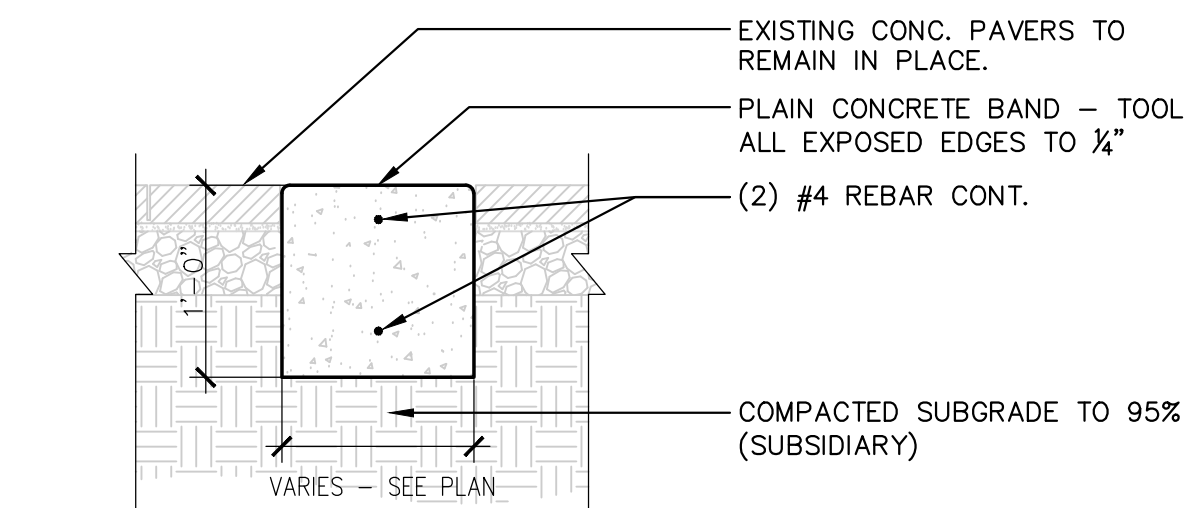
1" = 1'-0"



# 8 CONCRETE PAVER DETAIL

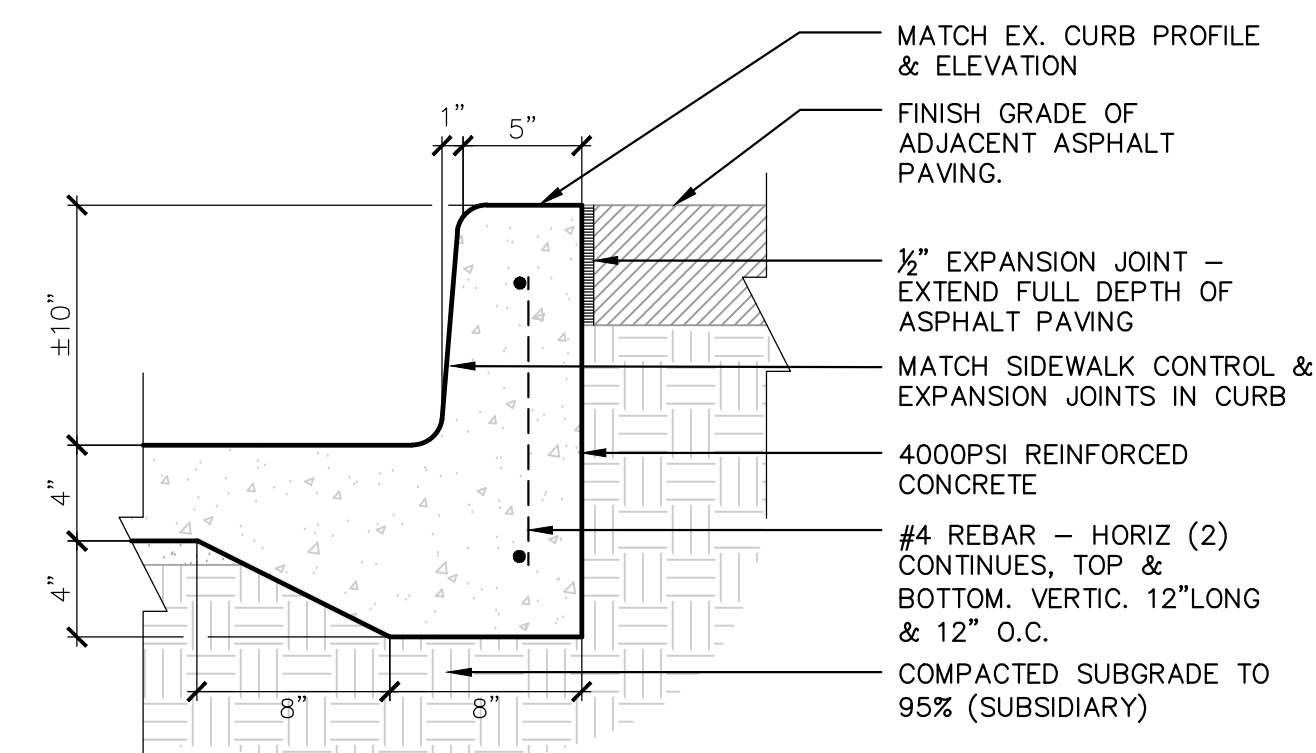
AGGREGATE BASE - TYPICAL INSTALLATION

1" = 1'-0"



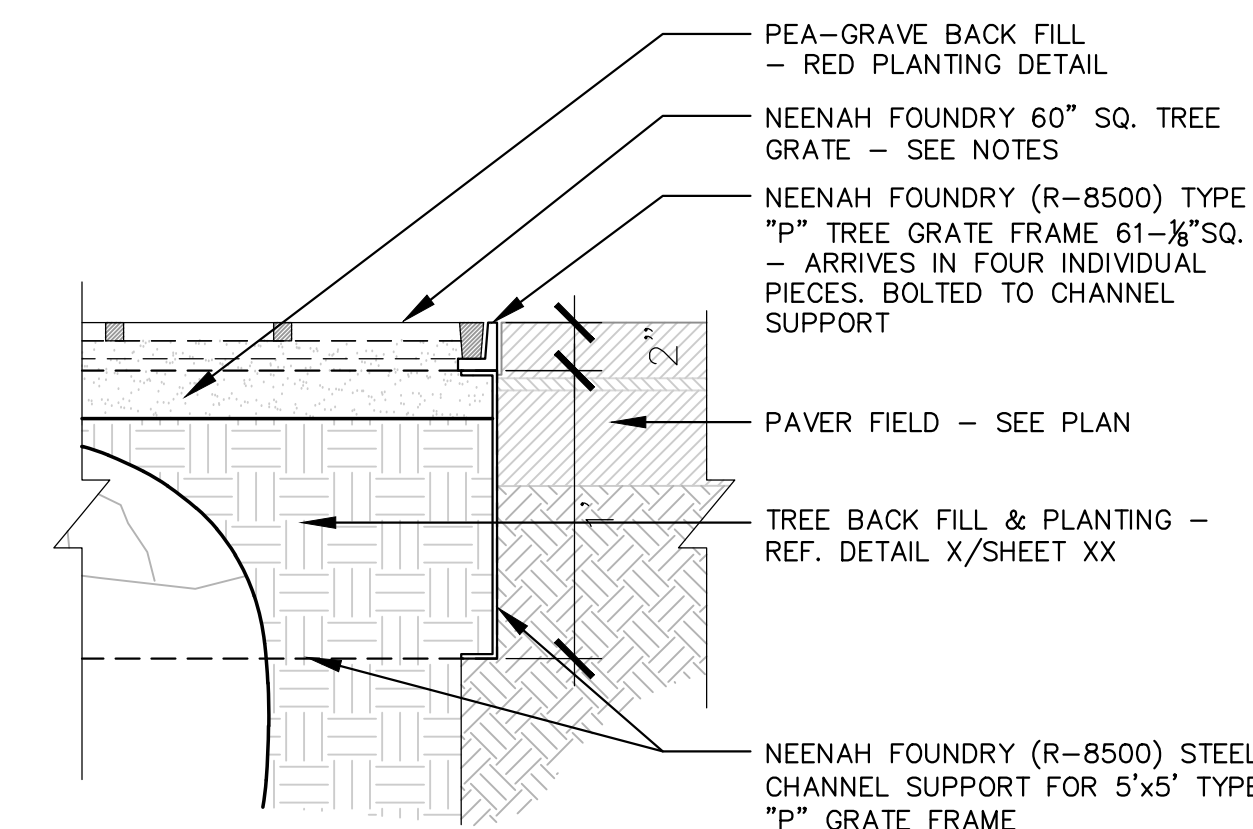
# 9 REINFORCED CONCRETE BAND

1" = 1'-0"



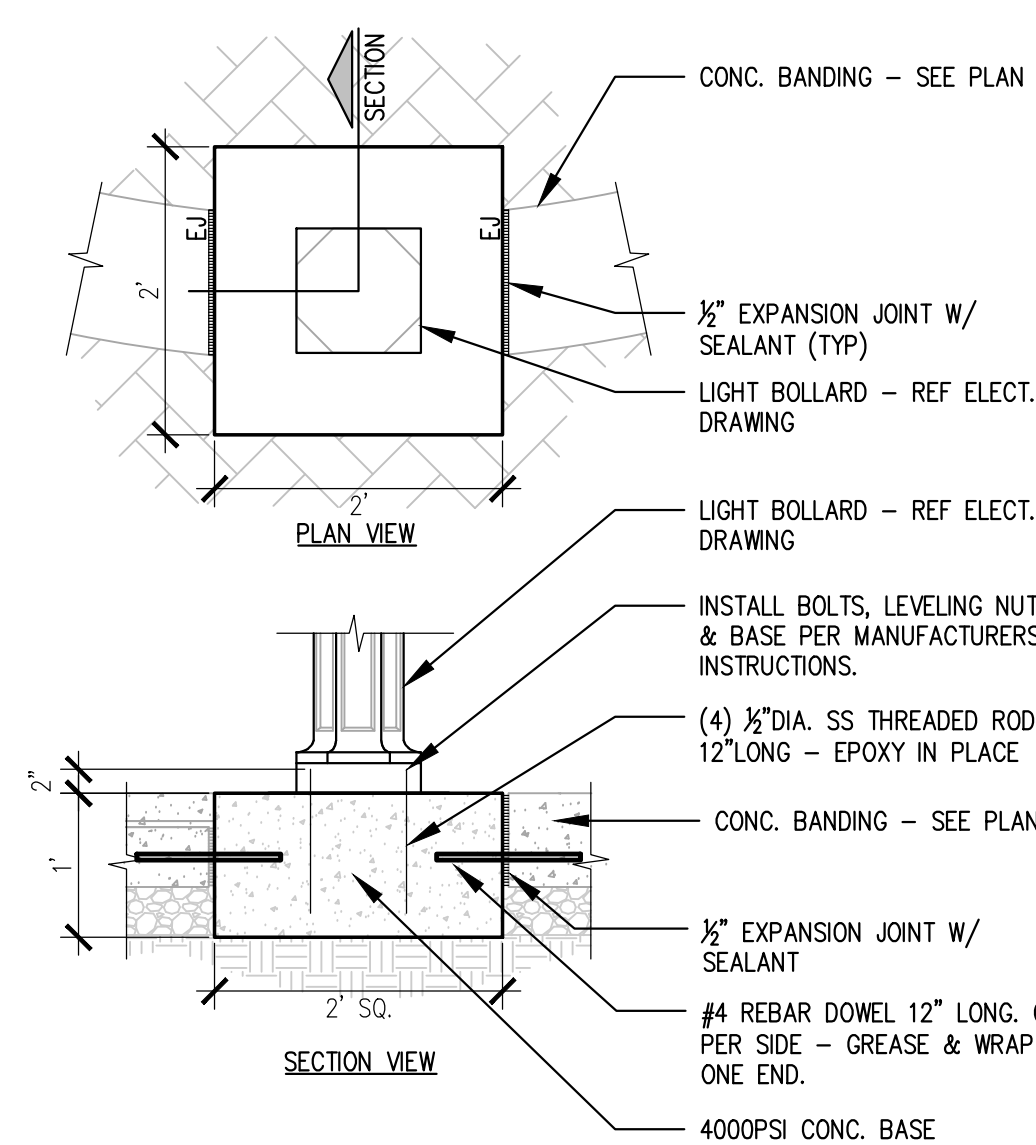
# 10 PROTECTION CURB

1-1/2" = 1'-0"



# 11 TREE WELL DETAIL

1" = 1'-0"



# 12 BOLLARD DETAIL

3/4" = 1'-0"

**Tran Systems**  
 245 NORTH WACO  
 SUITE 222  
 WICHITA, KANSAS 67202  
 PHONE: 316-303-3000  
 FAX: 316-303-0166

**LK Architecture, Inc.**  
 345 NORTH RIVERVIEW ST.  
 SUITE 200  
 WICHITA, KANSAS 67203  
 PHONE: 316-268-0230

**1ST STREET IMPROVEMENTS**  
 SANTA FE TO WASHINGTON IN OLD TOWN  
 WICHITA, KANSAS  
 CITY OF WICHITA

REVISIONS:	MARK	DATE	DESCRIPTION

PROJ NO: 16149  
 SCALE: N/A  
 DATE: 07/05/2017  
 DESIGNED BY: WAWELLS  
 DRAWN BY: WAWELLS  
 CHECKED BY: JABEST

**SHEET TITLE:**  
 SITE ARCHITECTURAL DETAILS

SHEET NO. 13  
 SHEET 13 OF 90

SUSERS SDATES - STIMES - FILELS