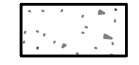


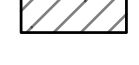


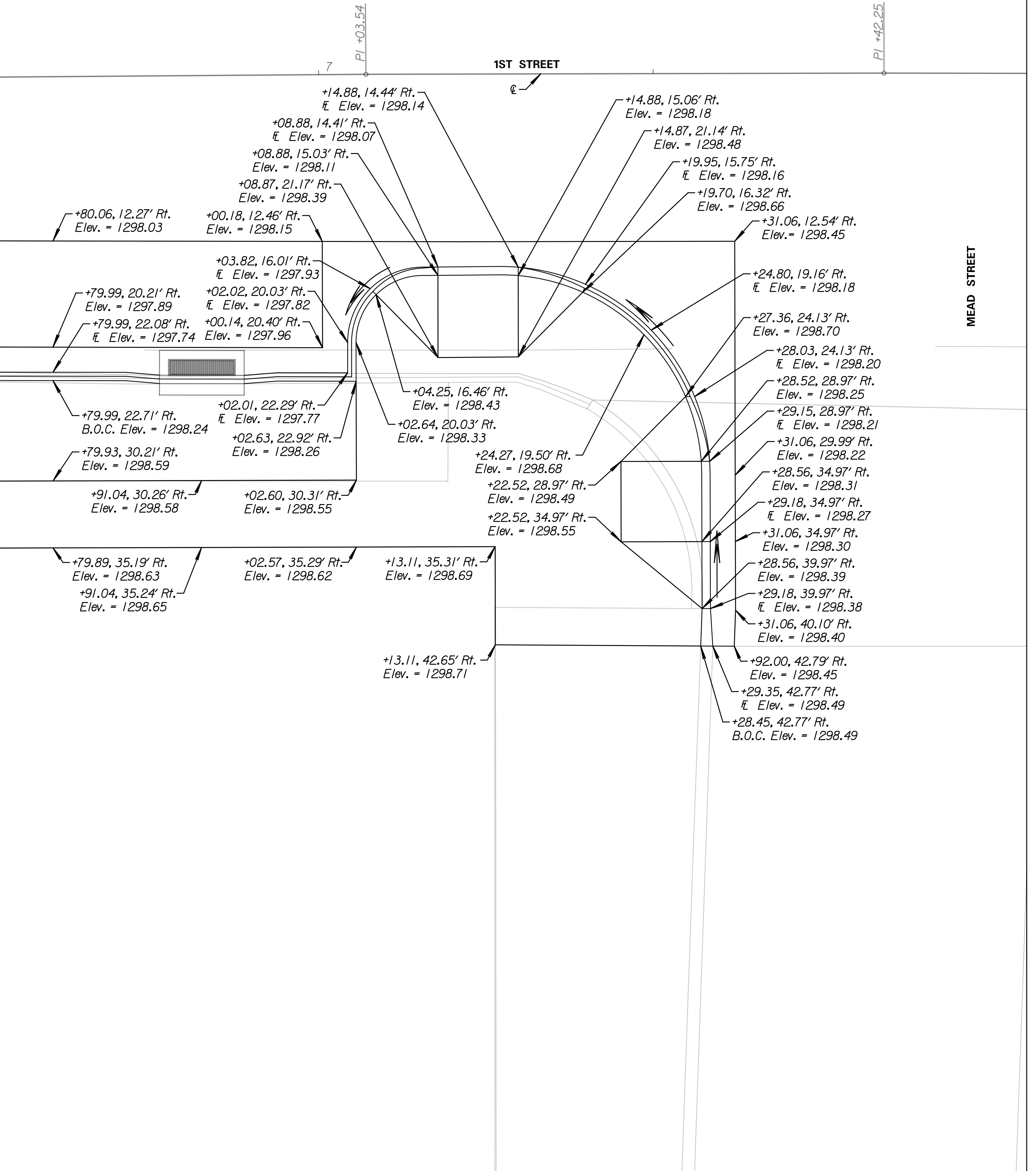
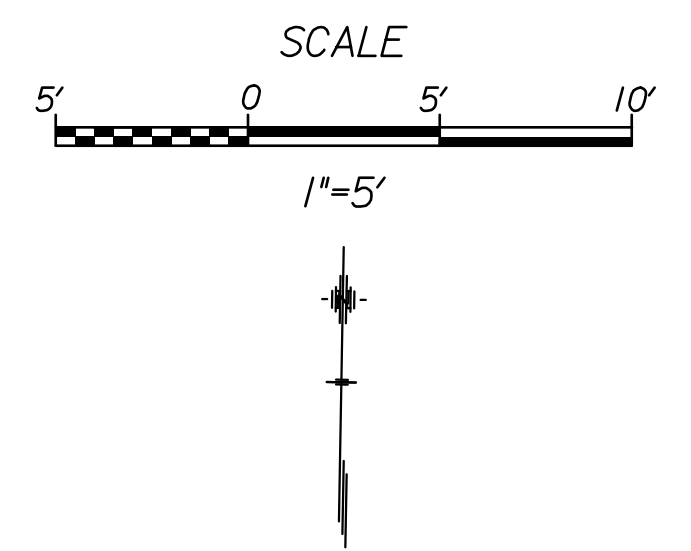
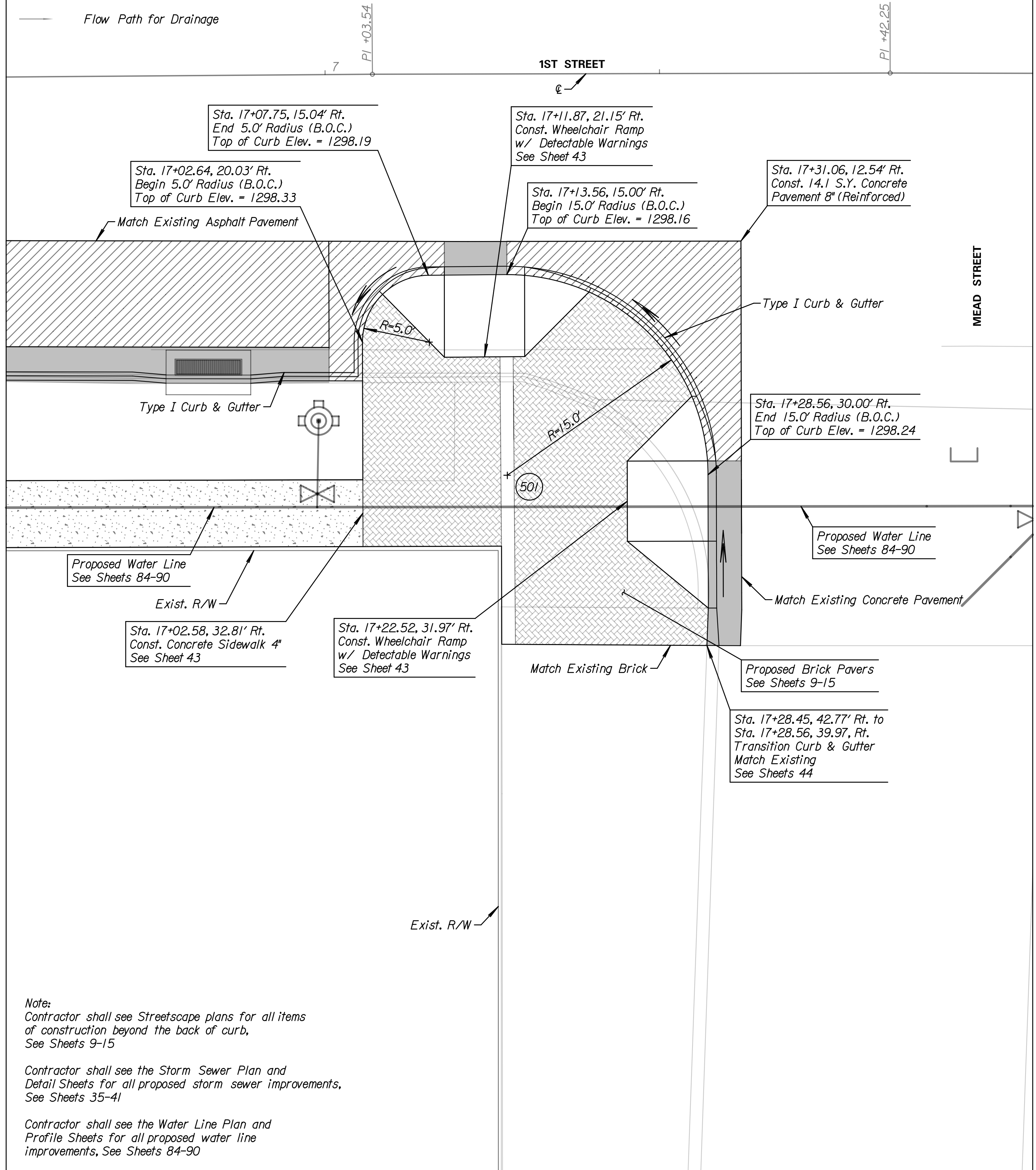


LEGEND

-  4" Concrete Sidewalk
-  Brick Pavers
-  Curb & Gutter
-  8" Concrete Pavement on a 7" Crushed Rock Base, Reinforced
-  9" Concrete Pavement on a 6" Crushed Rock Base, Reinforced
-  Flow Path for Drainage



Note:
Contractor shall see Streetscape plans for all items of construction beyond the back of curb, See Sheets 9-15

Contractor shall see the Storm Sewer Plan and Detail Sheets for all proposed storm sewer improvements, See Sheets 35-41

Contractor shall see the Water Line Plan and Profile Sheets for all proposed water line improvements, See Sheets 84-90

Tran Systems
245 NORTH WACO
SUITE 222
WICHITA, KANSAS 67202
PHONE: 316-303-3000
FAX: 316-303-0166

CONSULTANTS:

LK ARCHITECTURE, INC.
345 RIVERVIEW
SUITE 200
WICHITA, KANSAS 67208
PHONE: 316-268-0230

**1ST STREET IMPROVEMENTS
SANTA FE TO WASHINGTON IN OLD TOWN**
WICHITA, KANSAS


REVISIONS:	MARK	DATE	DESCRIPTION

PROJ NO: 472-85285
SCALE: 1"=5'
DATE: 7/5/2017
DESIGNED BY: TAU
DRAWN BY: TAU
CHECKED BY: MDB

SHEET TITLE:
**S.W. QUADRANT
DETAIL LAYOUT
1ST STREET &
MEAD STREET**

SHEET NO.
18
SHEET 18 OF 90

7/5/2017 3:55:09 PM c:\tran\systems\paw_bocall\transys\paw\taummed\048273\CLAY\M01-101.dgn