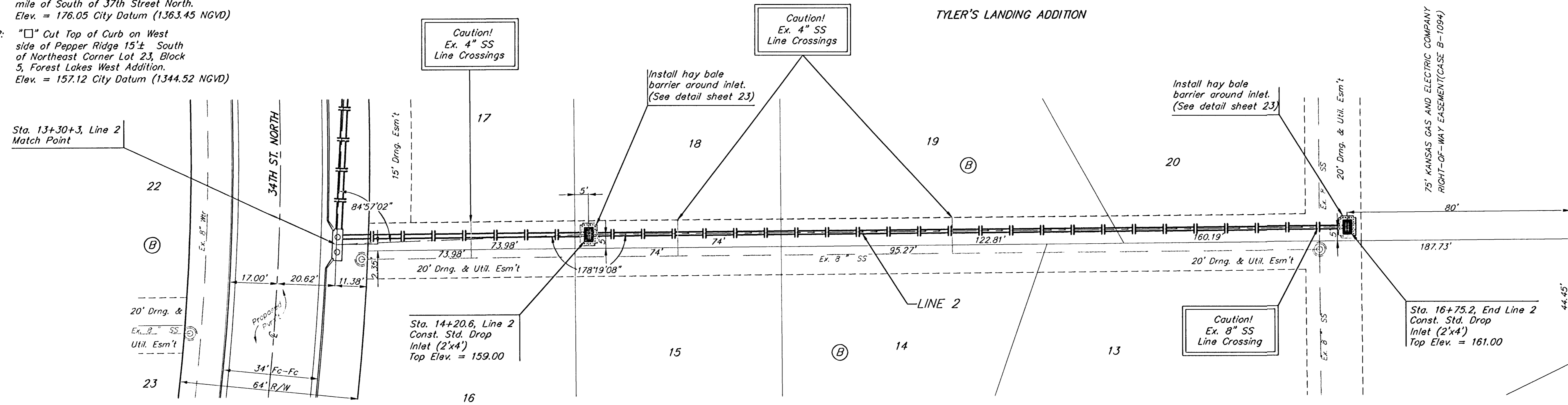


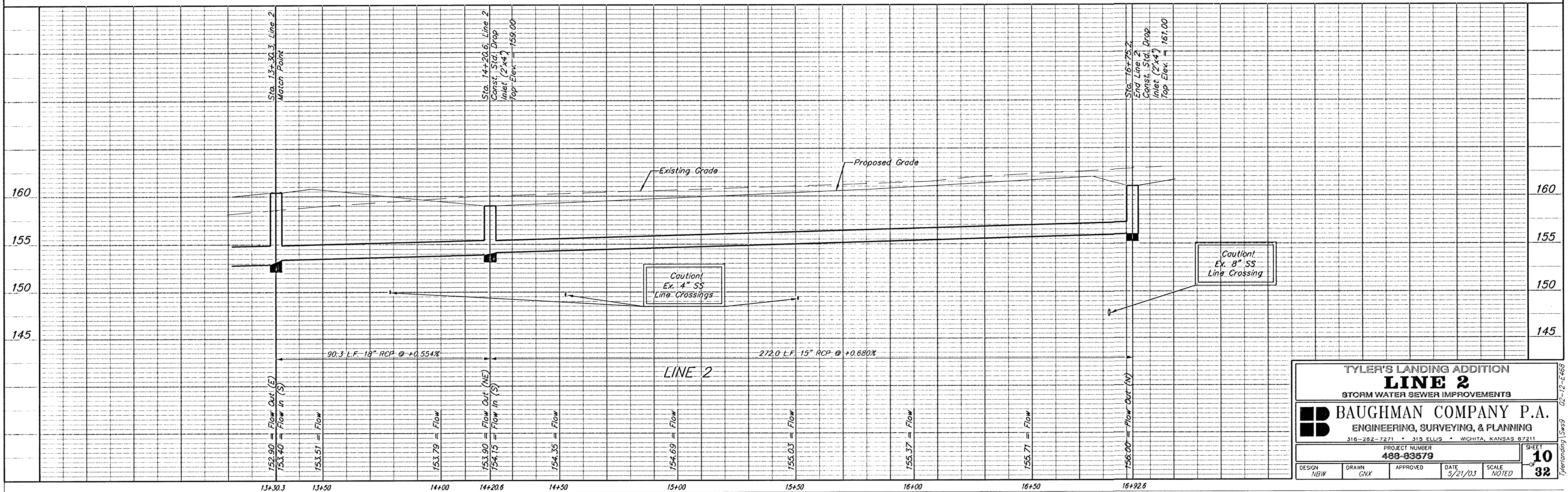
BENCHMARKS:

- BM #1: 80d Spike in West face of North High Line Pole in East R/W Tyler Road 1/2 mile of South of 37th Street North. Elev. = 176.05 City Datum (1363.45 NGVD)
- BM #2: "□" Cut Top of Curb on West side of Pepper Ridge 15'± South of Northeast Corner Lot 23, Block 5, Forest Lakes West Addition. Elev. = 157.12 City Datum (1344.52 NGVD)

Scale: 1" = 20' Horizontal
1" = 5' Vertical
• = Iron



TYLER'S LANDING ADDITION



TYLER'S LANDING ADDITION			
LINE 2			
STORM WATER SEWER IMPROVEMENTS			
BAUGHMAN COMPANY P.A. ENGINEERING, SURVEYING, & PLANNING 316-262-7271 • 313 ELLIS • WICHITA, KANSAS 67211			
DESIGN	DRAWN	APPROVED	DATE
NBW	CWX		5/21/03
PROJECT NUMBER		SCALE	
480-83579		NOTED	
SHEET			10
			32

02-12-ET68 TylerLanding SWS9