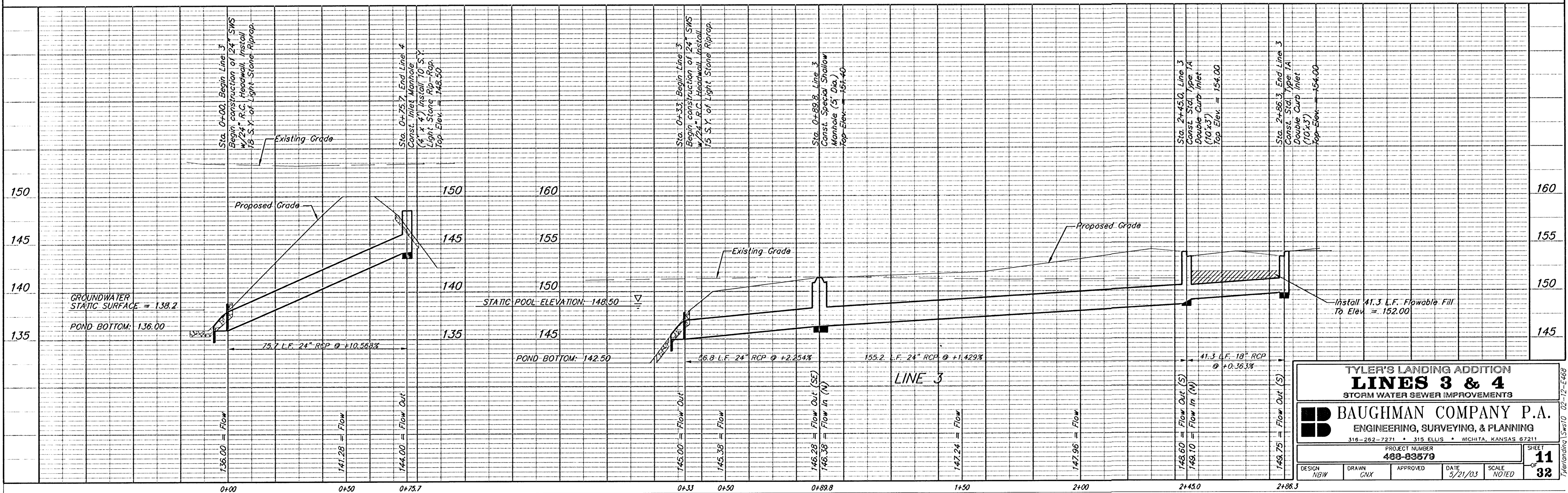
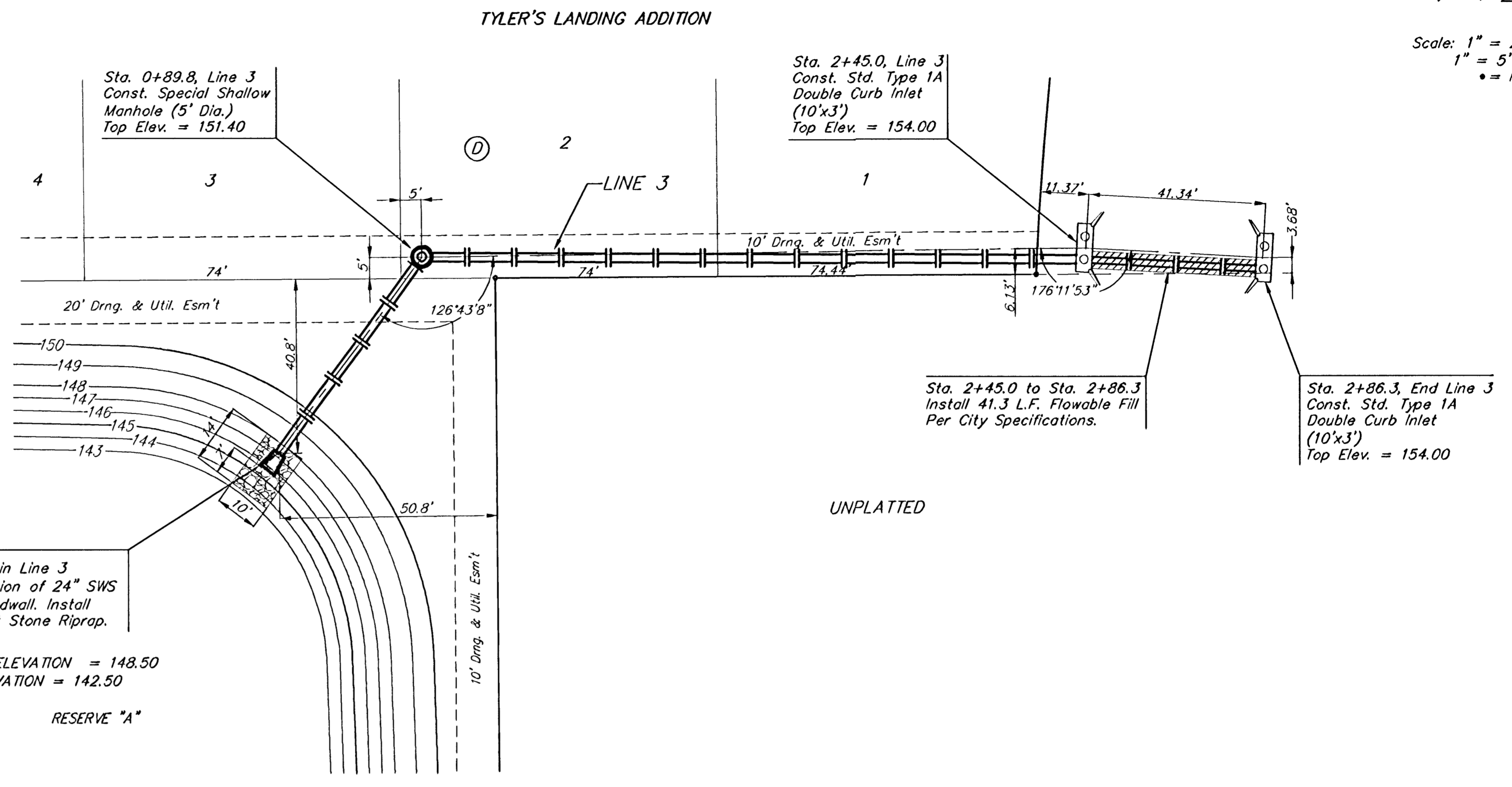
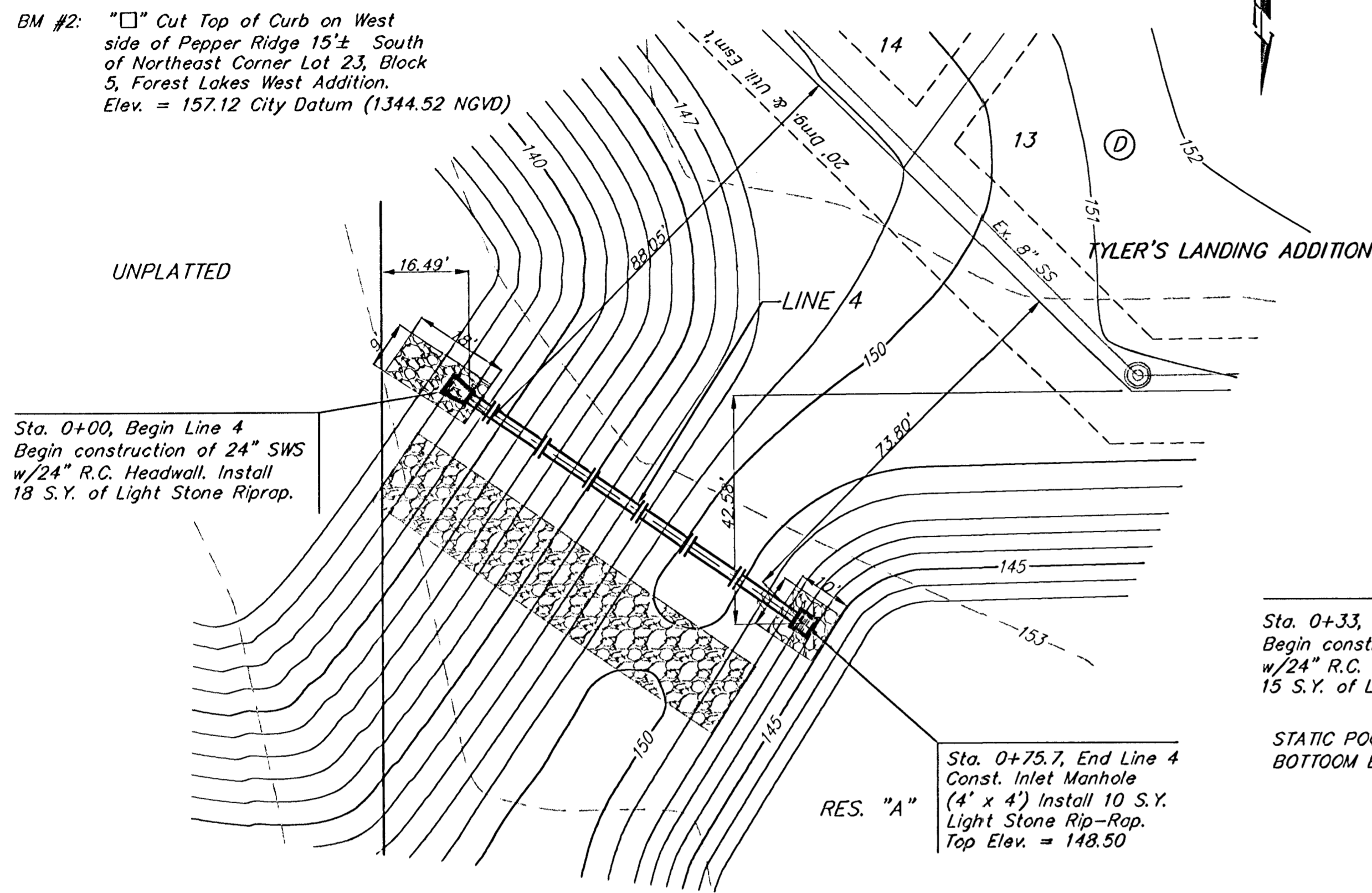
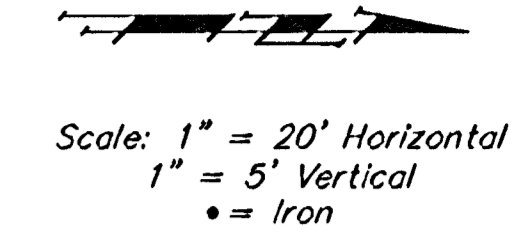


**BENCHMARKS:**

BM #1: 80d Spike in West face of North High Line Pole in East R/W Tyler Road 1/2 mile of South of 37th Street North. Elev. = 176.05 City Datum (1363.45 NGVD)

BM #2: "□" Cut Top of Curb on West side of Pepper Ridge 15'± South of Northeast Corner Lot 23, Block 5, Forest Lakes West Addition. Elev. = 157.12 City Datum (1344.52 NGVD)



**TYLER'S LANDING ADDITION**  
**LINES 3 & 4**  
STORM WATER SEWER IMPROVEMENTS

**BAUGHMAN COMPANY P.A.**  
ENGINEERING, SURVEYING, & PLANNING  
316-262-7271 • 315 ELLIS • WICHITA, KANSAS 67211

PROJECT NUMBER: **468-83579**

DESIGN: NBW | DRAWN: CNX | APPROVED: [Signature] | DATE: 9/21/03 | SCALE: NOTED

SHEET **11** OF **32**

Mechanical Sws10\_02-12-E468