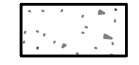


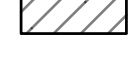


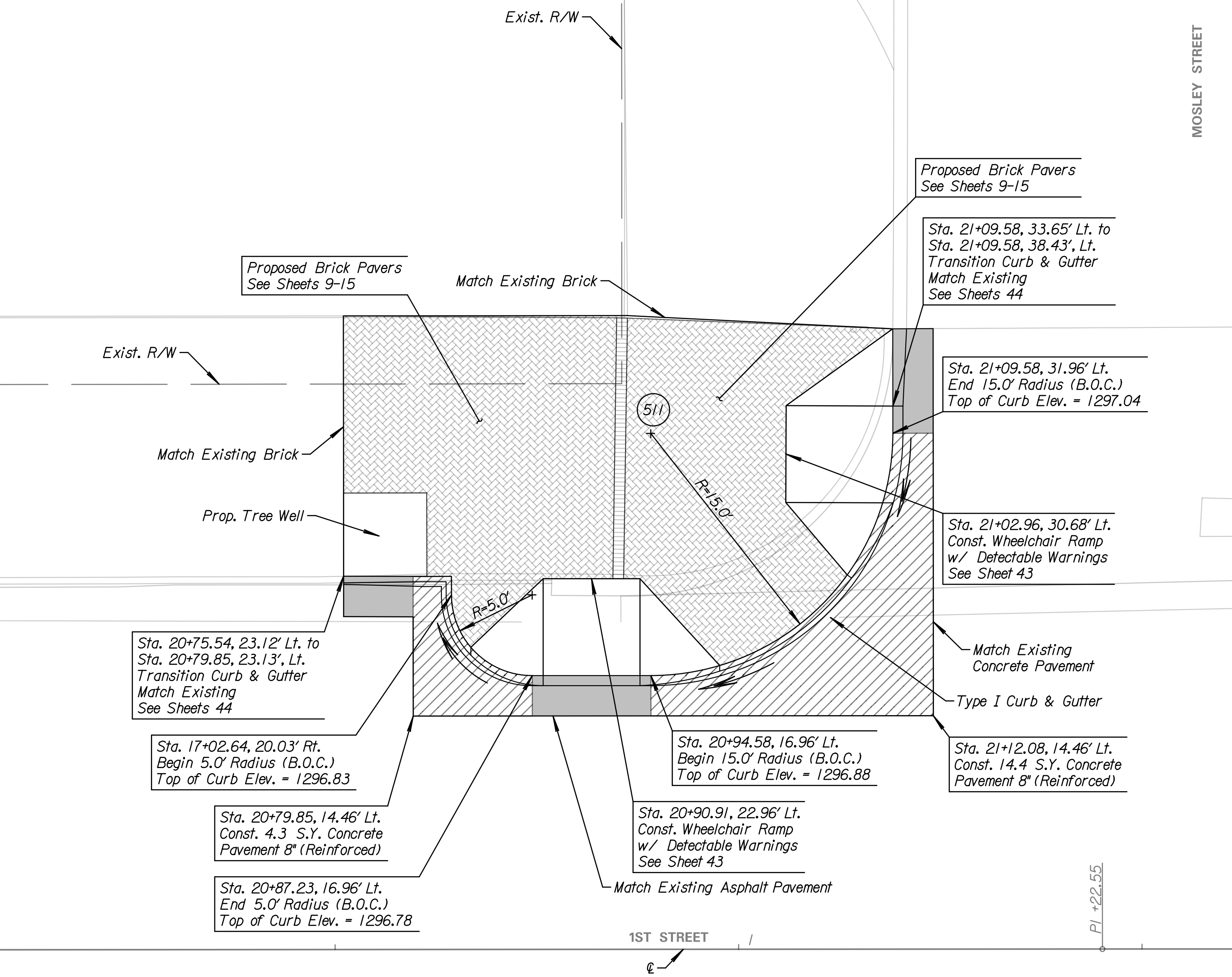
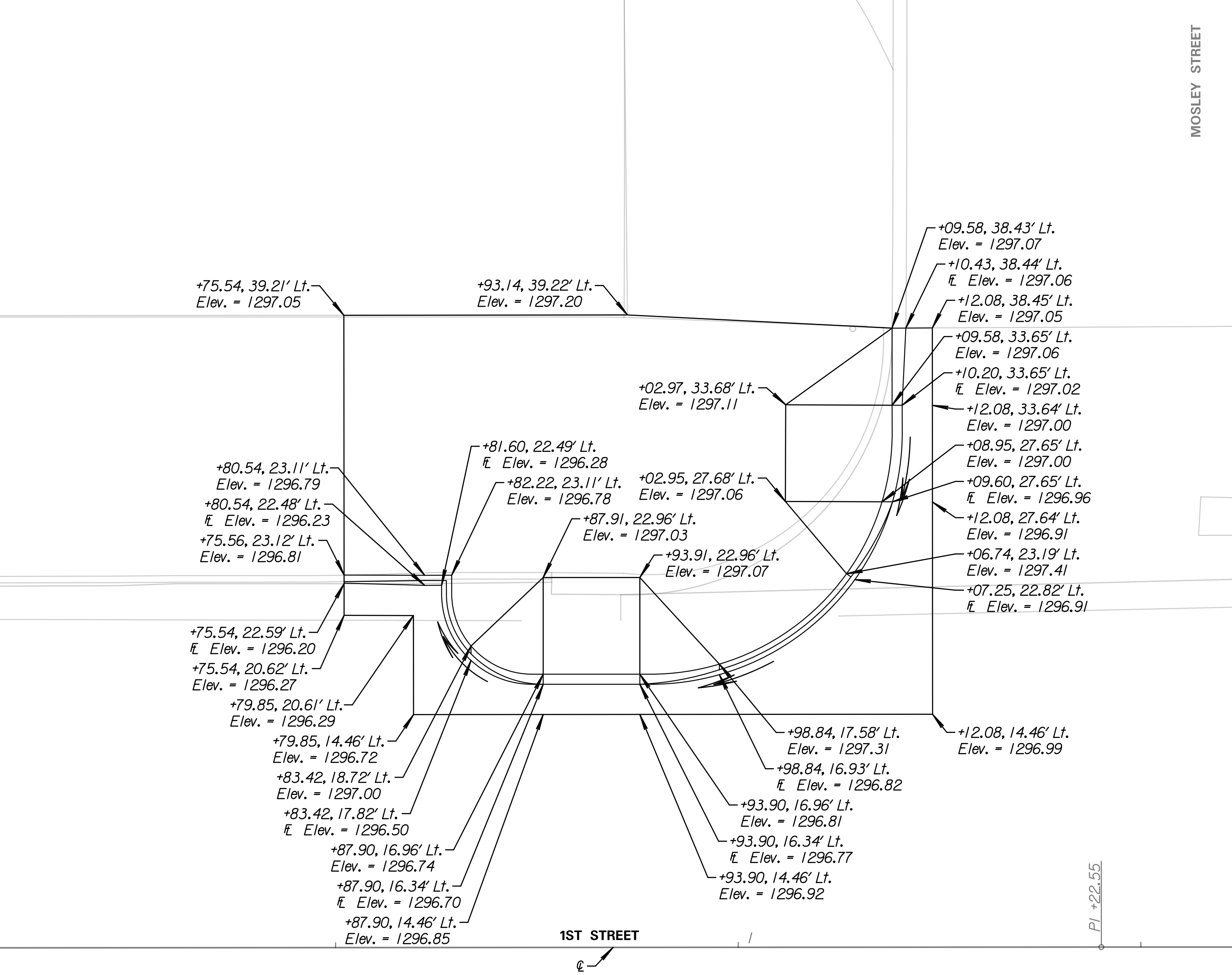
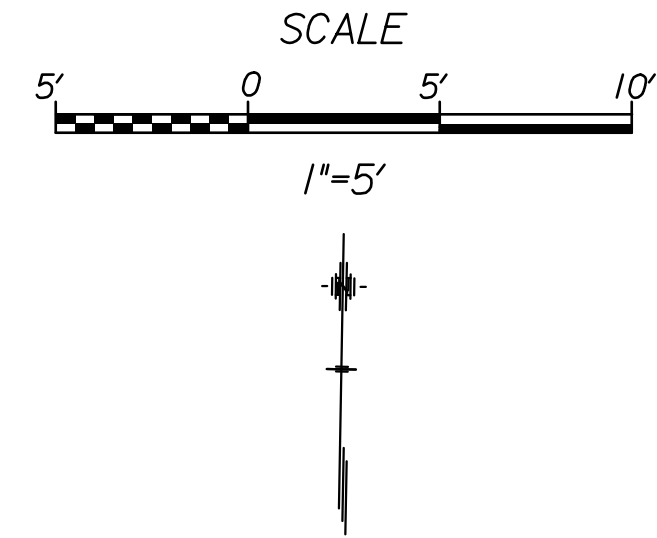


LEGEND

-  4" Concrete Sidewalk
-  Brick Pavers
-  Curb & Gutter
-  8" Concrete Pavement on a 7" Crushed Rock Base, Reinforced
-  9" Concrete Pavement on a 6" Crushed Rock Base, Reinforced
-  Flow Path for Drainage



Note:
Contractor shall see Streetscape plans for all items of construction beyond the back of curb, See Sheets 9-15



Tran Systems
245 NORTH WACO
SUITE 222
WICHITA, KANSAS 67202
PHONE: 316-303-3000
FAX: 316-303-0156

CONSULTANTS:
LK ARCHITECTURE, INC.
345 RIVERVIEW
SUITE 200
WICHITA, KANSAS 67208
PHONE: 316-268-0230

**1ST STREET IMPROVEMENTS
SANTA FE TO WASHINGTON IN OLD TOWN**
WICHITA, KANSAS
CITY OF WICHITA

REVISIONS:	MARK	DATE	DESCRIPTION

PROJ NO: 472-85285
SCALE: 1"=5'
DATE: 7/5/2017
DESIGNED BY: TAU
DRAWN BY: TAU
CHECKED BY: MDB

**SHEET TITLE:
N.W. QUADRANT
DETAIL LAYOUT
1ST STREET &
MOSLEY STREET**

SHEET NO.
28
SHEET 28 OF 90