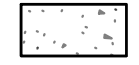


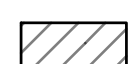


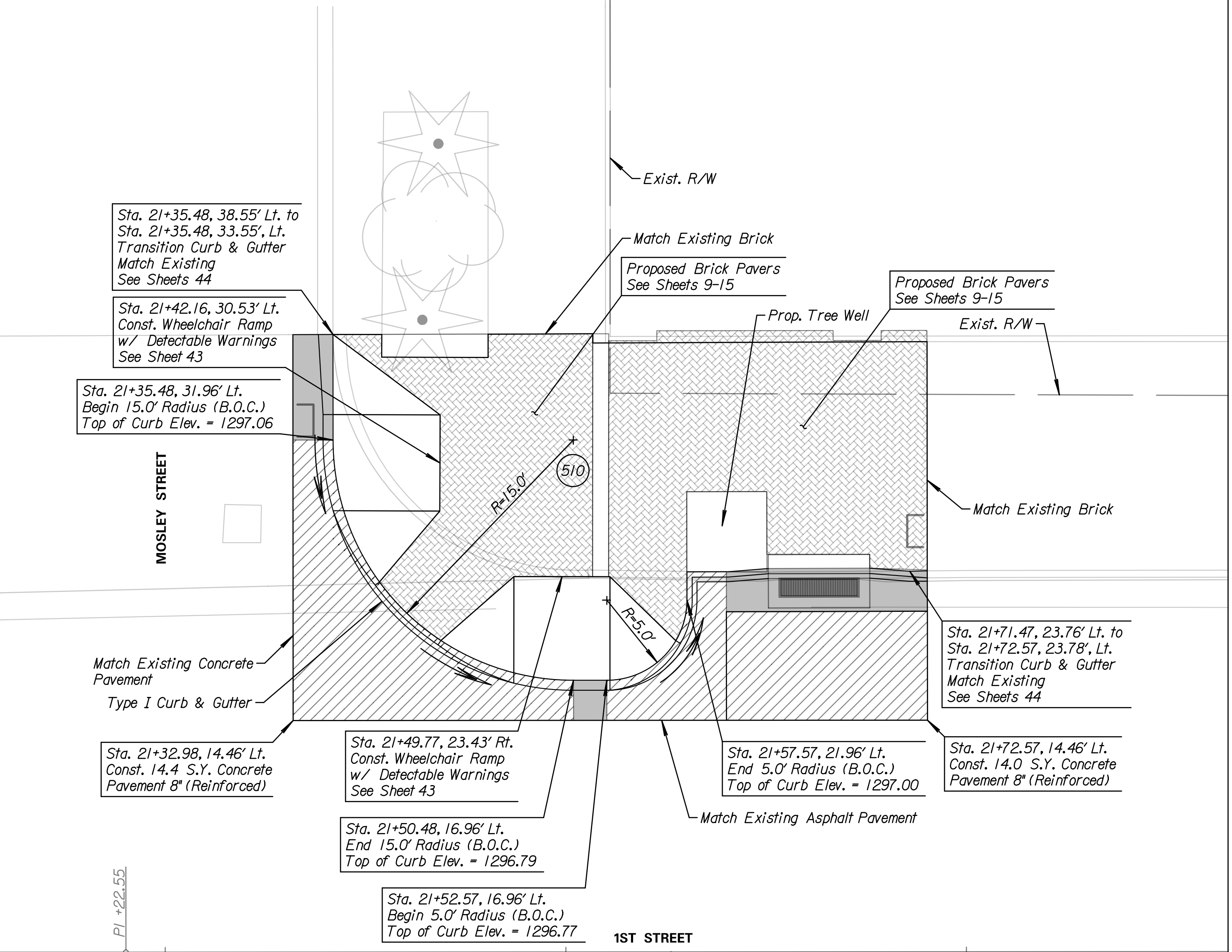


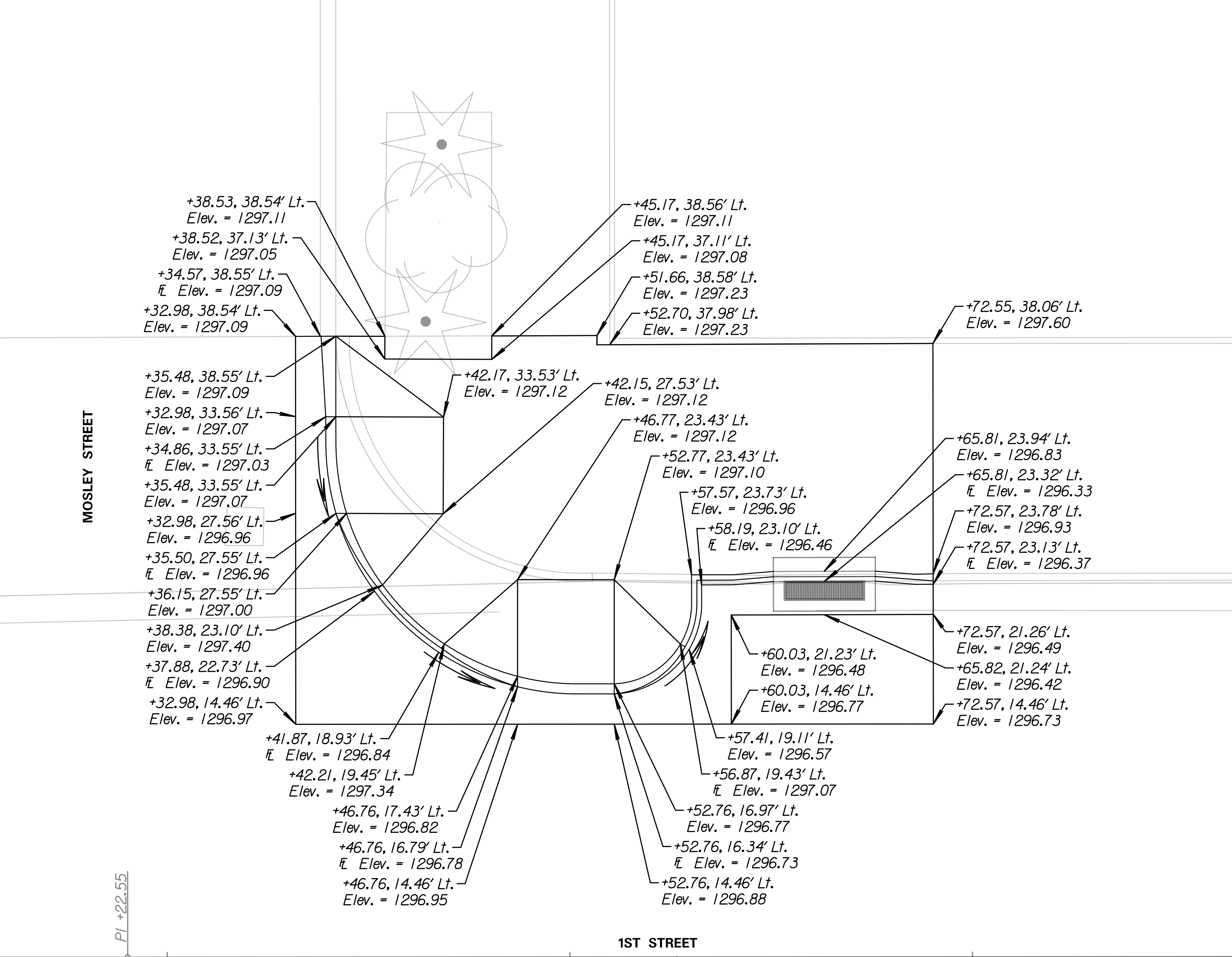
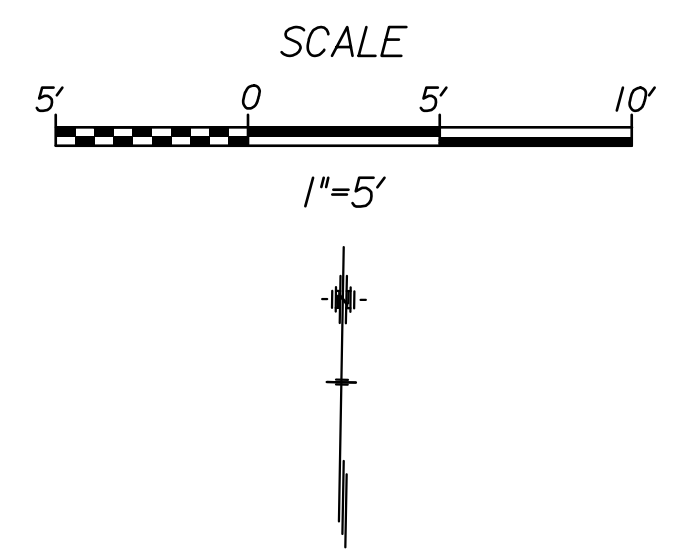
**LEGEND**

-  4" Concrete Sidewalk
-  Brick Pavers
-  Curb & Gutter
-  8" Concrete Pavement on a 7" Crushed Rock Base, Reinforced
-  9" Concrete Pavement on a 6" Crushed Rock Base, Reinforced
-  Flow Path for Drainage



**Note:**  
Contractor shall see Streetscape plans for all items of construction beyond the back of curb, See Sheets 9-15

Contractor shall see the Storm Sewer Plan and Detail Sheets for all proposed storm sewer improvements, See Sheets 35-41



**Tran Systems**  
245 NORTH WACO  
SUITE 222  
WICHITA, KANSAS 67202  
PHONE: 316-303-3000  
FAX: 316-303-0166

**CONSULTANTS:**  
**LK ARCHITECTURE, INC.**  
345 RIVERVIEW  
SUITE 200  
WICHITA, KANSAS 67208  
PHONE: 316-268-0230

**1ST STREET IMPROVEMENTS  
SANTA FE TO WASHINGTON IN OLD TOWN  
WICHITA, KANSAS**

REVISIONS:	MARK	DATE	DESCRIPTION

PROJ NO: 472-85285  
SCALE: 1"=5'  
DATE: 7/5/2017  
DESIGNED BY: TAU  
DRAWN BY: TAU  
CHECKED BY: MDB

**SHEET TITLE:  
N.E. QUADRANT  
DETAIL LAYOUT  
1ST STREET &  
MOSLEY STREET**

SHEET NO.  
**30**  
SHEET 30 OF 90