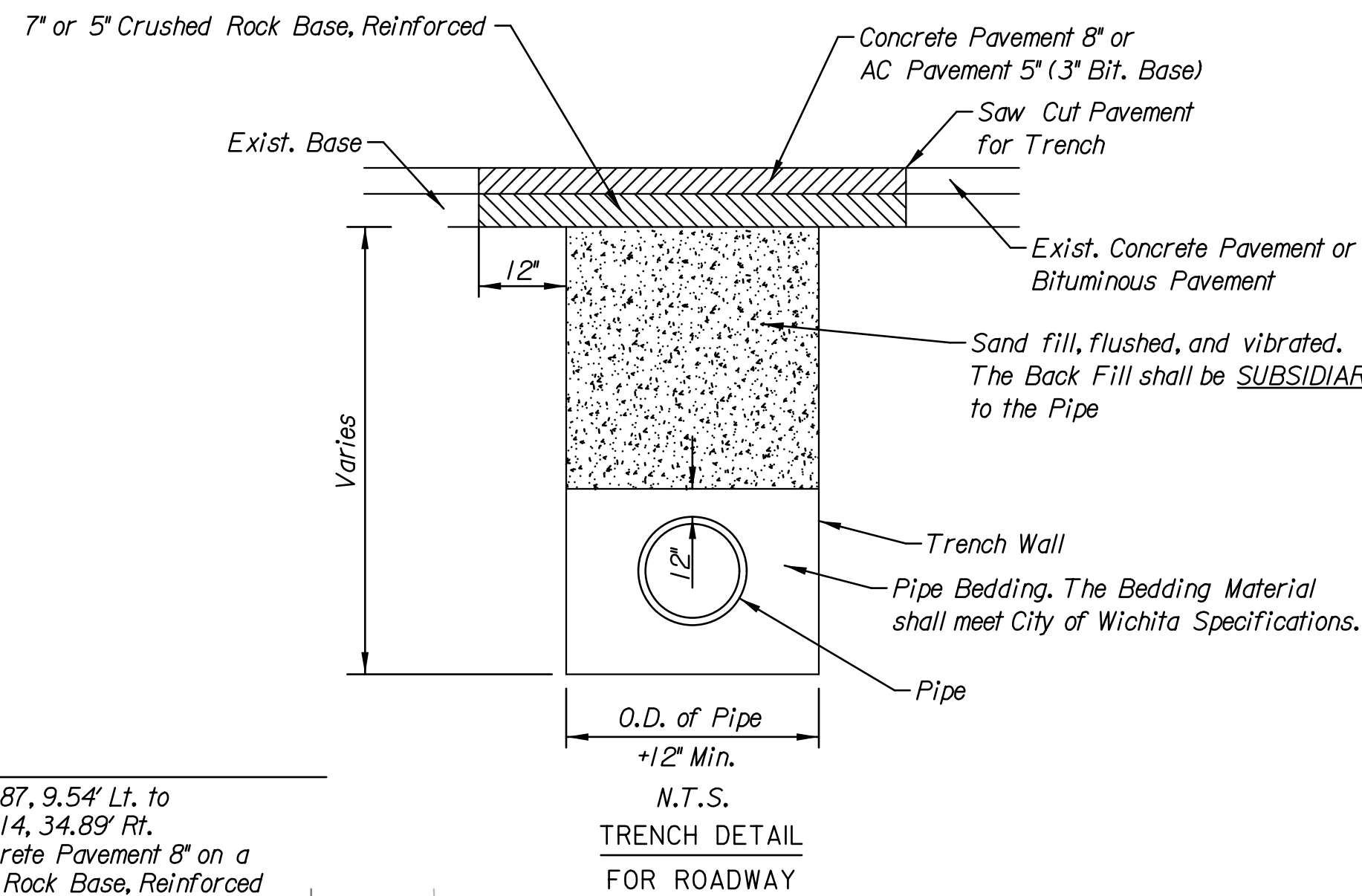


LEGEND

- Pavement Removal
- Sidewalk Removal
- Curb & Gutter Removal
- Brick Paver Removal
- 2" Mill & Overlay
- Tree Removal



Note:  
 (XXX) For control and coordinate data, See Sheet 3

Contractor shall see streetscape plans for all items of construction beyond the back of curb, See Sheets 9-15

Contractor shall see the bird deterrent & edge dam sheets for the bird deterrent procedures under the railroad bridge, See Sheets 16-17

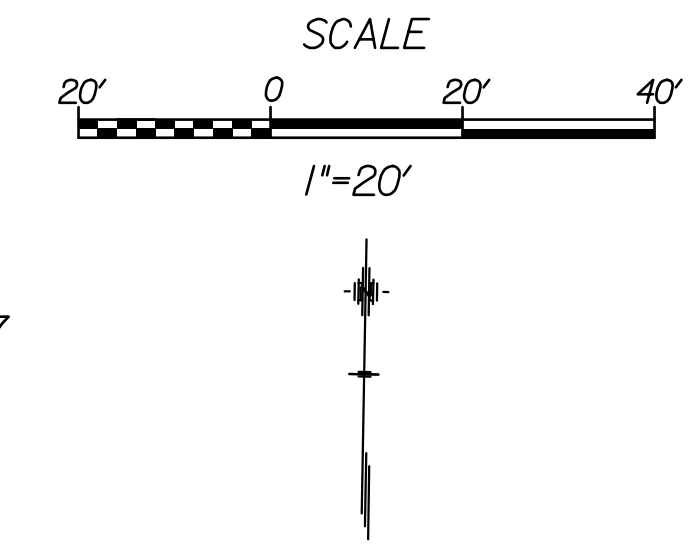
All other material and labor needed to connect the existing storm sewer to the proposed storm sewer or inlets shall be considered SUBSIDIARY to the bid item, "Connect to Existing Structure".

All other material and labor, other than that noted in the plans, to install and connect the existing roof drain at Sta. 15+27.58, 34.52' Rt. to the proposed inlet shall be considered SUBSIDIARY to the bid item, "Pipe, PVC 4"

\*Contractor is to field verify all utility locations and elevations prior to excavating. Utility locations and elevations are shown to the best knowledge of the utility companies.

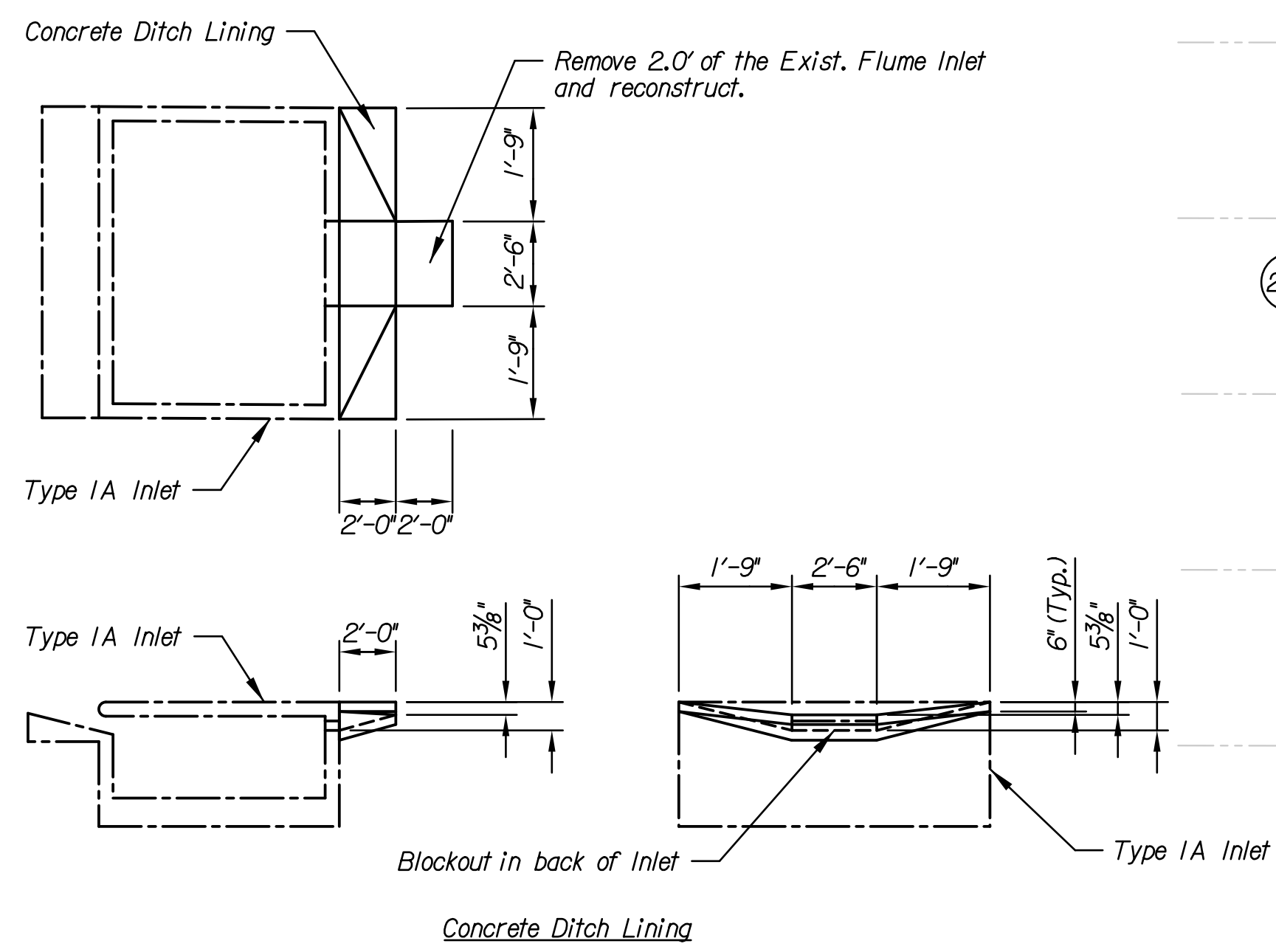
Existing landscaping on the east side of Santa Fe shall remain unless otherwise directed by the Engineer to be removed for construction.

Any storm sewer adjacent to the curb & gutter or under any proposed pavement on mainline, sideroads, or entrances shall be backfilled in accordance with the City of Wichita Specifications unless otherwise noted on the plans or by the Engineer.

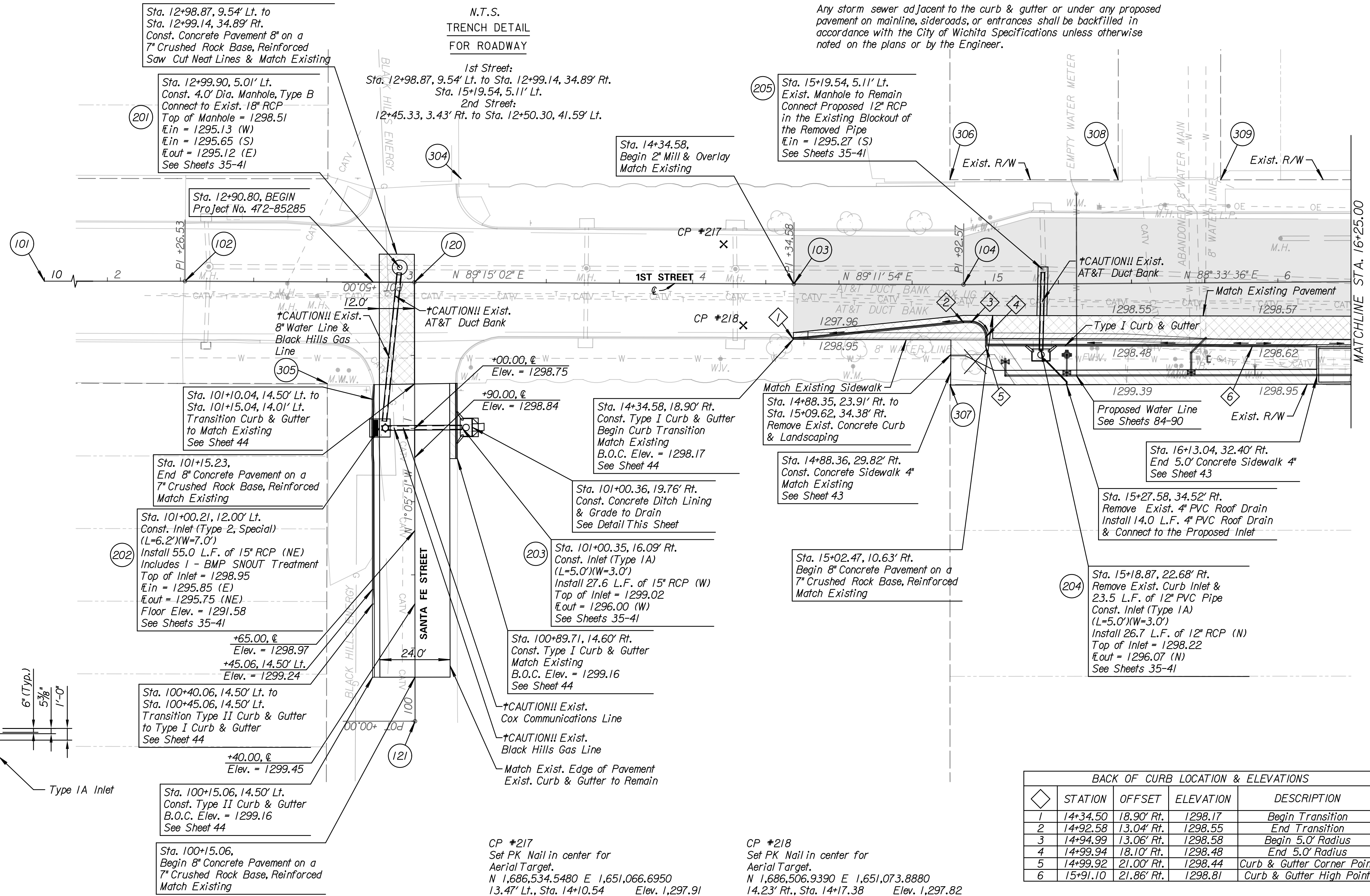


General Note  
 Concrete Grade 4.0 (AE) shall be used in Concrete Ditch Lining. Wire Reinforcing mesh shall be used and placed at a depth of D/2 where D is the Concrete Ditch Lining Thickness. Wire Reinforcing Mesh shall be of the electrically welded square mesh type with No. W1.4 wires spaced at 6" centers each way. Approximate weight of welded wire mesh is 21 lbs. / 100 sq. ft. All work and materials as noted or shown shall be included in the Lump Sum price bid for "Concrete Ditch Lining". Construction Joints shall be located at planes of weakness. All grading for installation, materials, labor, and any other miscellaneous items needed for construction of "Ditch Lining", whether Specifically mentioned or not, shall be SUBSIDIARY to "Ditch Lining".

DESCRIPTION	QUANTITY	UNIT
Concrete Grade 4.0 (AE)	35.2	S.F.
Wire Reinforcing Mesh	7.4	LBS



Concrete Ditch Lining shall be used on inlet at Sta. 101+00.21, 16.09' Rt. & Sta. 150+50.49, 19.02' Rt. and shall be paid for as "Lump Sum"



STATION	OFFSET	ELEVATION	DESCRIPTION
1	14+34.50	18.90' Rt.	1298.17 Begin Transition
2	14+92.58	13.04' Rt.	1298.55 End Transition
3	14+94.99	13.06' Rt.	1298.58 Begin 5.0' Radius
4	14+99.94	18.10' Rt.	1298.48 End 5.0' Radius
5	14+99.92	21.00' Rt.	1298.44 Curb & Gutter Corner Point
6	15+91.10	21.86' Rt.	1298.81 Curb & Gutter High Point

**Tran Systems**  
 245 NORTH WACO  
 SUITE 222  
 WICHITA, KANSAS 67202  
 PHONE: 316-303-3000  
 FAX: 316-303-0166

CONSULTANTS:  
**LK ARCHITECTURE, INC.**  
 345 RIVERVIEW  
 SUITE 200  
 WICHITA, KANSAS 67208  
 PHONE: 316-268-0230

1ST STREET IMPROVEMENTS  
 SANTA FE TO WASHINGTON IN OLD TOWN  
 WICHITA, KANSAS

REVISIONS:	DESCRIPTION	DATE	MARK

PROJ NO: 472-85285  
 SCALE: 1"=20'  
 DATE: 7/5/2017  
 DESIGNED BY: TAU  
 DRAWN BY: TAU  
 CHECKED BY: MDB

SHEET TITLE:  
**1ST STREET IMPROVEMENTS**  
 SHEET NO.  
**5**  
 SHEET 5 OF 90