

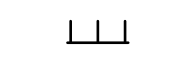

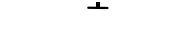
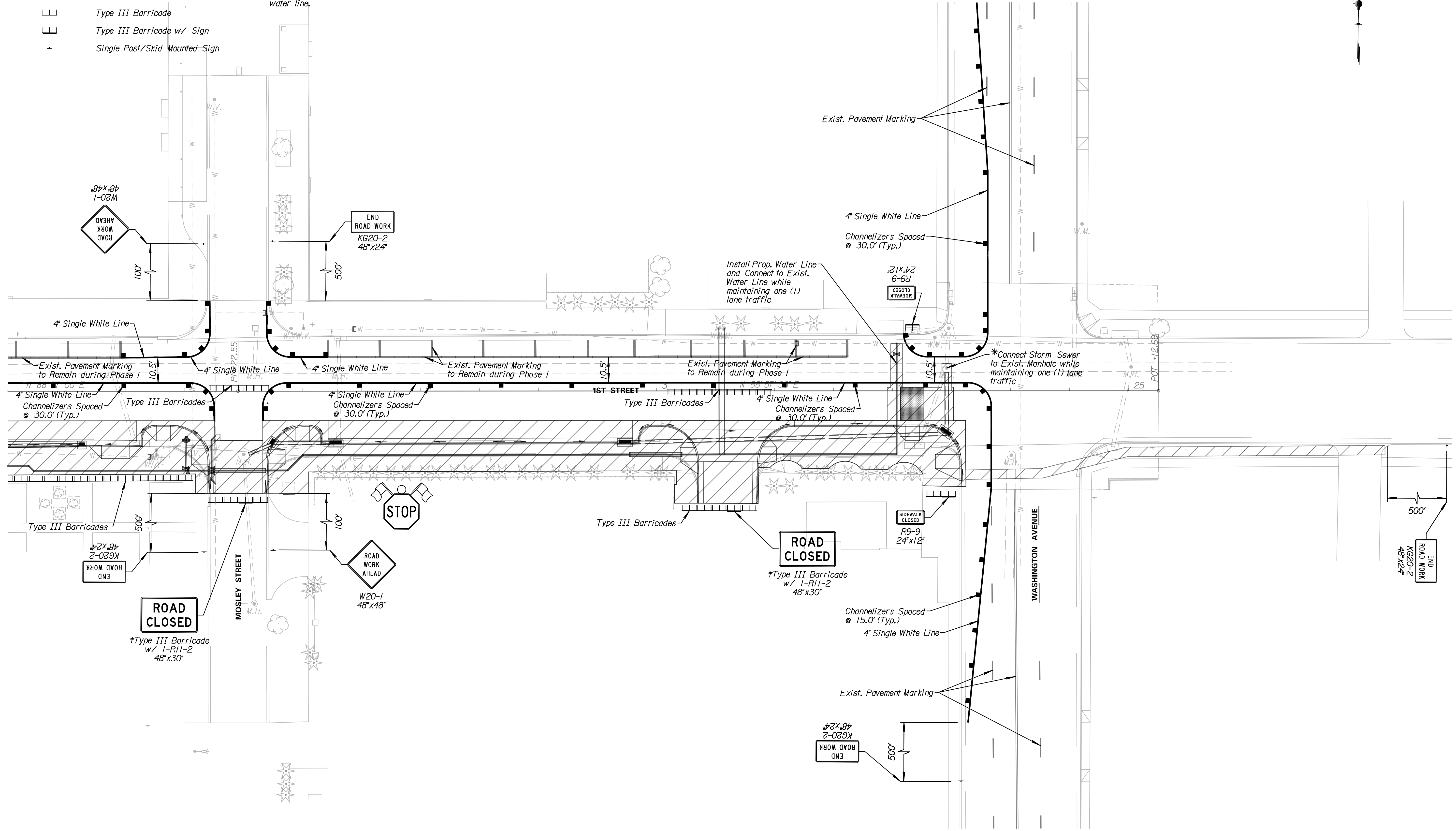
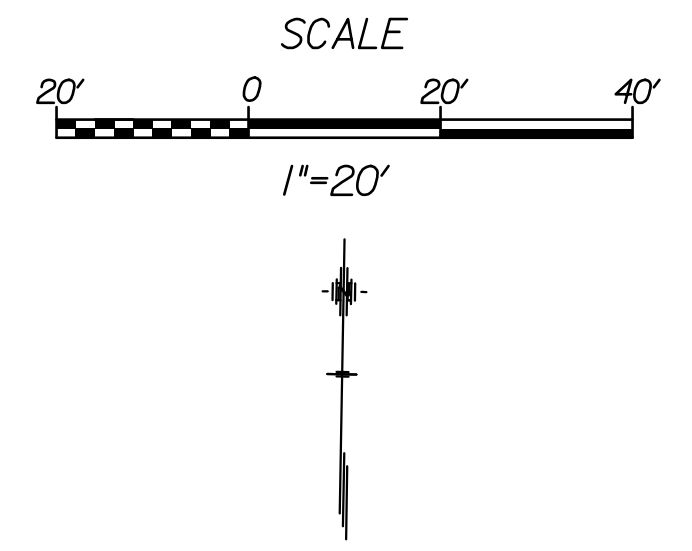


LEGEND

-  Phase I
-  Channelizer
-  Type III Barricade
-  Type III Barricade w/ Sign
-  Single Post/Skid Mounted Sign

Note:
 †Type III Barricades and signs are to only be placed during construction through private drive or side street.
 *The Contractor shall maintain one (1) lane of traffic at all times when connecting the proposed storm sewer to the existing manhole and while installing the proposed water line.



Tran Systems
 245 NORTH WACO
 SUITE 222
 WICHITA, KANSAS 67202
 PHONE: 316-303-3000
 FAX: 316-303-0166

CONSULTANTS:

 LK ARCHITECTURE, INC.
 345 RIVERVIEW
 SUITE 200
 WICHITA, KANSAS 67208
 PHONE: 316-268-0230

1ST STREET IMPROVEMENTS
 SANTA FE TO WASHINGTON IN OLD TOWN
 WICHITA, KANSAS


| REVISIONS: | MARK | DATE | DESCRIPTION |
|------------|------|------|-------------|
| | | | |
| | | | |
| | | | |

PROJ NO: 472-85285
 SCALE: 1"=20'
 DATE: 7/5/2017
 DESIGNED BY: TAU
 DRAWN BY: TAU
 CHECKED BY: MDB

SHEET TITLE:
**1ST STREET IMPROVEMENTS
 TRAFFIC CONTROL
 PHASE 1**

SHEET NO.
54
 SHEET 54 OF 90

taumdel 7/5/2017 3:57:57 PM - c:\tran\systems\paw_bocall\tran\systems\paw\taumdel\0482731C-CPP-M01-103.dgn