

REVISIONS:	MARK	DATE	DESCRIPTION

PROJ NO: 472-85285  
 SCALE: NTS  
 DATE: 7/5/2017  
 DESIGNED BY: TAU  
 DRAWN BY: TAU  
 CHECKED BY: MDB

SHEET TITLE:  
**TYPICAL MISC. PAVEMENT MARKING DETAILS & SUMMARY OF QUANTITIES**

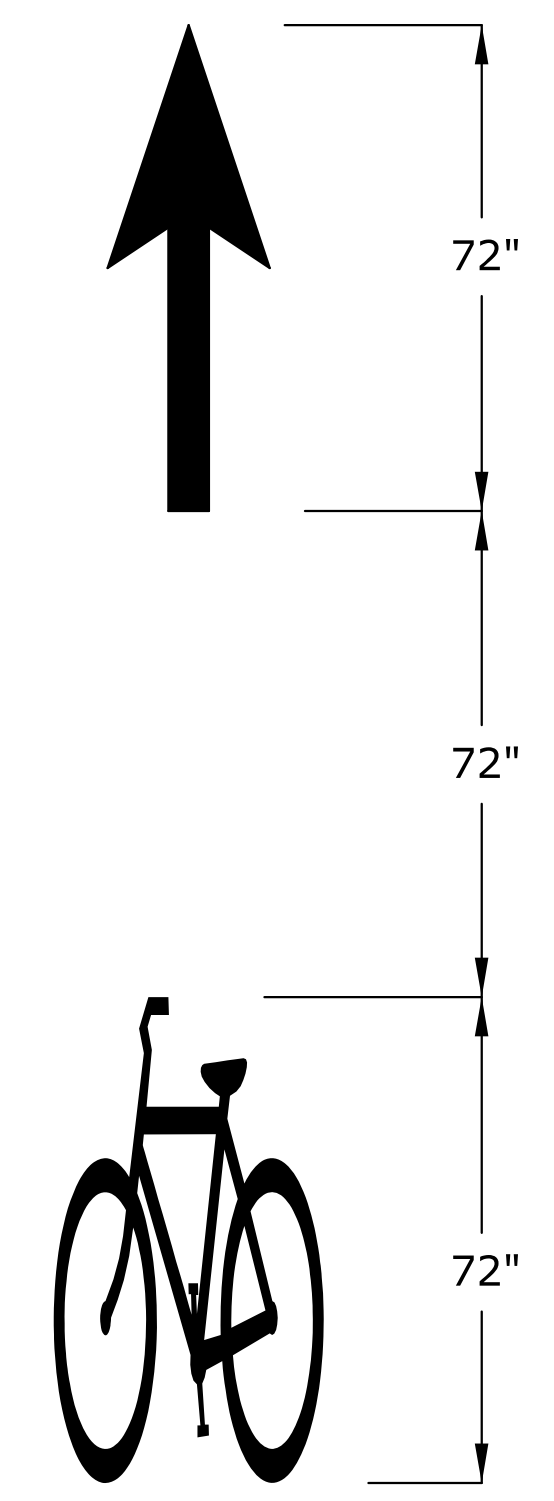
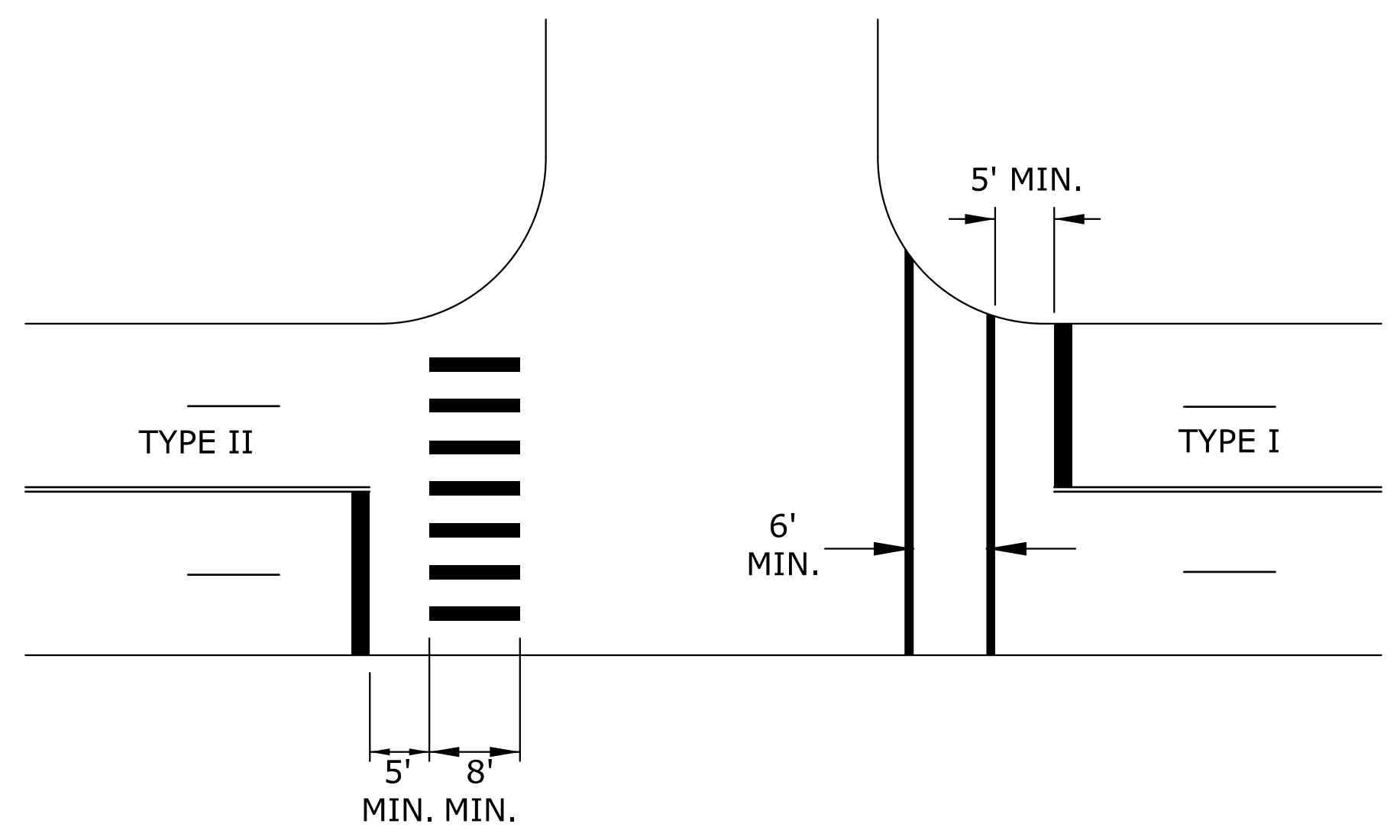
SHEET NO.  
**69**  
 SHEET 69 OF 90

**TYPICAL CROSSWALKS**

TYPE I: CROSSWALK LINES SHALL BE 12" SOLID WHITE LINES. THEY SHALL BE SPACED A MINIMUM OF 6' APART FROM INSIDE EDGE TO INSIDE EDGE.

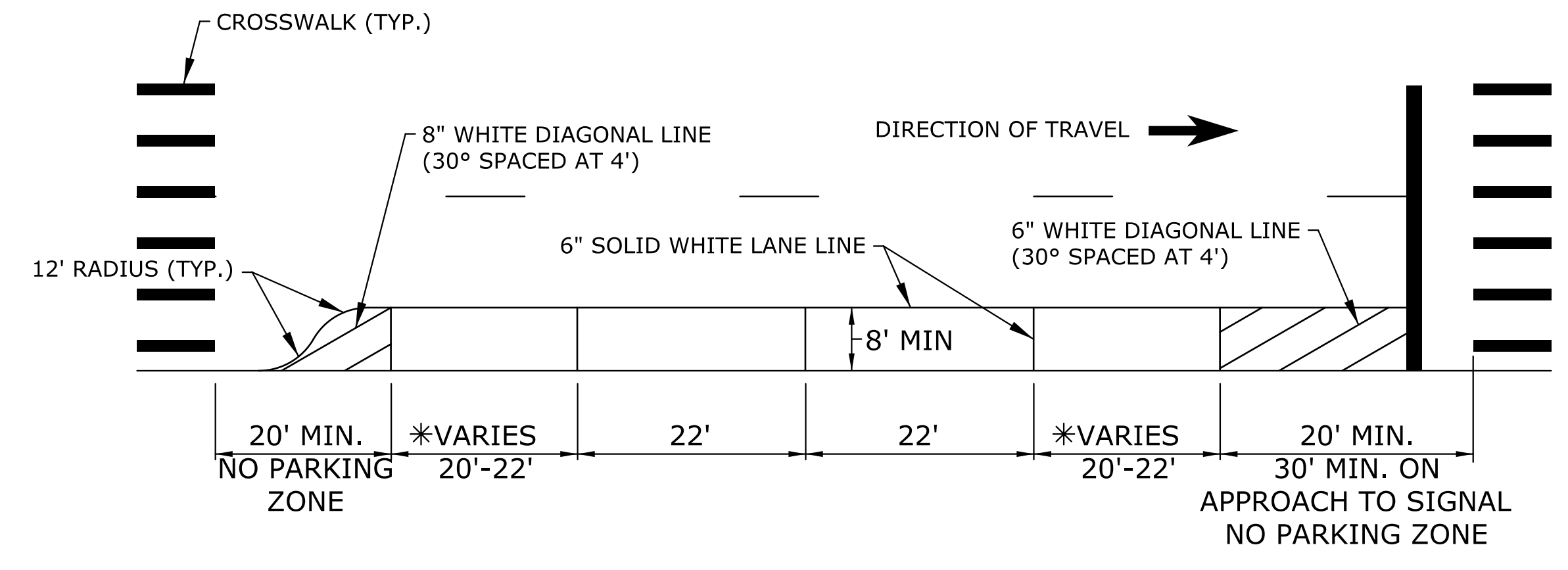
TYPE II: THESE LINES SHOULD BE SOLID WHITE 24" WIDE PLACED PARALLEL TO THE DIRECTION OF TRAFFIC FLOW. THE LINE PLACEMENT IS DETERMINED BY LANE LINE, CENTER LINE, AND WHEEL PATH IN SUCH A MANNER AS TO MINIMIZE TRAFFIC WEAR. THE CROSSWALK WIDTH SHOULD BE NOT LESS THAN 8'. THE TRANSVERSE CROSSWALK LINES MAY BE ADDED.

WHEN REQUIRED, STOP LINES SHALL BE INSTALLED A MINIMUM OF 5' FROM CROSSWALKS.



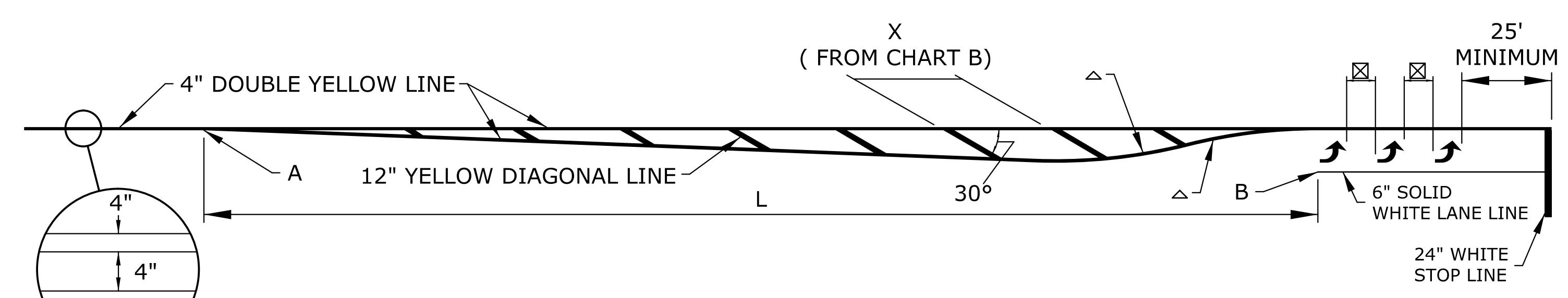
THRU ARROW & BICYCLE SYMBOLS

**TYPICAL PARKING SPACE MARKINGS**



\* END SPACES MAY BE 20' ONLY. ALL OTHER PARKINGS SPACES SHALL BE A MINIMUM OF 22'

**TYPICAL APPROACH TAPER DETAIL**



THE APPROACH TAPER LENGTH FROM POINT A TO POINT B IS TO BE DETERMINED USING CHART C. VALUES FOR L WERE CALCULATED USING THE EQUATIONS BELOW AND INCREASED TO THE NEXT HIGHER 5 MPH INCREMENT.

- SPEEDS < 45 MPH  $L = \frac{W * S^2}{60}$

- SPEEDS = 45 MPH  $L = W * S$

IF ARROWS ARE USED AND UNLESS OTHERWISE SPECIFIED THE SPACE BETWEEN LINES SHOULD BE AT LEAST FOUR TIMES THE HEIGHT OF THE CHARACTERS FOR LOW SPEED ROADS BUT NOT MORE THAN TEN TIMES THE HEIGHT OF THE CHARACTERS, UNDER ANY CONDITIONS.

FOR SPEEDS LESS THAN OR EQUAL TO 40 MPH, R=150'.  
 FOR SPEEDS GREATER THAN OR EQUAL TO 45 MPH, R=300'.

CHART "B"		CHART "C"	
APPROACH SPEED	X	APPROACH SPEED	L
20 MPH	20'	20 MPH	80'
25 MPH	25'	25 MPH	125'
30 MPH	30'	30 MPH	180'
35 MPH	35'	35 MPH	245'
40 MPH	40'	40 MPH	320'
45 MPH	45'	45 MPH	540'
50 MPH	50'	50 MPH	600'
55 MPH	55'	55 MPH	660'
60 MPH	60'	60 MPH	720'
65 MPH	65'	65 MPH	780'
70 MPH	70'	70 MPH	840'

**SUMMARY OF PAVEMENT MARKING QUANTITIES (FOR INFORMATION ONLY)**

ITEMS	TOTAL	UNITS
PAVEMENT MARKING (EPOXY)(WHITE)(4")	54	LF
PAVEMENT MARKING (EPOXY)(WHITE)(6")	3179	LF
PAVEMENT MARKING (EPOXY)(WHITE)(24")	316	LF
PAVEMENT MARKING (EPOXY)(WHITE)(BICYCLE)	6	EA
REMOVAL OF EXISTING MARKINGS (GRINDING)	5000	LF

All pavement markings shall be epoxy meeting City of Wichita specifications and special provisions.

Removal of existing pavement markings which conflict with proposed pavement markings shall be paid for by the bid item "Removal of Existing Markings (grinding)". All materials, labor and equipment necessary to complete this work shall be included in this bid item, and will be paid for by the linear ft regardless of width removed.

Pavement marking shall be paid for by the Lump Sum bid item, "Pavement Marking".