

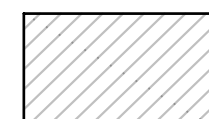
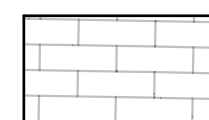




LEGEND

-  Pavement Removal
-  Sidewalk Removal
-  Curb & Gutter Removal
-  Brick Paver Removal
-  2" Mill & Overlay
-  Tree Removal

For Sidewalk Ramps, Entrance, & Sidewalk Layout Information, See Sheet 34

Sta. 23+97.64, Begin 9" Concrete Pavement on a 6" Crushed Rock Base, Reinforced Saw Cut Neat Line & Match Existing

Sta. 23+97.64, End 2" Mill & Overlay Match Concrete Pavement

Sta. 23+68.15, 14.46' Lt. End 8" Concrete Pavement on a 7" Crushed Rock Base, Reinforced Match Existing

Sta. 23+64.31, 21.71' Lt. Const. Inlet (Type 2, Double) Install 59.5 L.F. of 15" RCP (E) Fin = 1293.65 (E) Top of Inlet Elev. = 1296.82 See Sheets 35-41

Sta. 23+58.69, 14.46' Lt. Begin 8" Concrete Pavement on a 7" Crushed Rock Base, Reinforced Match Existing

For Sidewalk Ramps & Sidewalk Layout Information, See Sheet 31

Sta. 24+07.99, 25.37' Lt. Remove Existing Curb Inlet & 15.8 L.F. of 15" RCP (E)

*CAUTION!! Exist. Westar Line

Sta. 24+08.31, Const. Brick Crosswalk See Sheet 44

Sta. 24+23.76, 26.53' Lt. Exist. Manhole to Remain Connect Proposed 15" RCP (W) in the Existing Blockout of the Removed Pipe Fin = 1293.10 (W) See Sheets 35-41

Sta. 24+22.88, 9.69' Lt. Exist. Manhole to Remain Connect Proposed 15" RCP (S) in the Existing Blockout of the Removed Pipe Fin = 1291.51 (S) See Sheets 35-41

N 88° 57' 38" E
*CAUTION!! Exist. Zayo Fiber Lines 1296.77

Exist. R/W *CAUTION!! Exist. AT&T Line

Proposed Water Line See Sheets 84-90

Sta. 24+11.52, 21.86' Rt. Remove Existing Grate Inlet, Double & 34.2 L.F. of 15" RCP (NE)

For Sidewalk Ramps & Sidewalk Layout Information, See Sheet 33

For Sidewalk Ramps, Entrance, & Sidewalk Layout Information, See Sheet 32

Sta. 24+30.69, END Project No. 472-85285

Sta. 24+25.71, End 9" Concrete Pavement on a 6" Crushed Rock Base, Reinforced Saw Cut Neat Line & Match Existing

Sta. 24+23.34, 16.05' Rt. Const. Inlet (Type 2, Double) Install 25.0 L.F. of 15" RCP (N) Fin = 1292.35 (W) Finout = 1292.30 (N) Top of Inlet Elev. = 1296.70 See Sheets 35-41

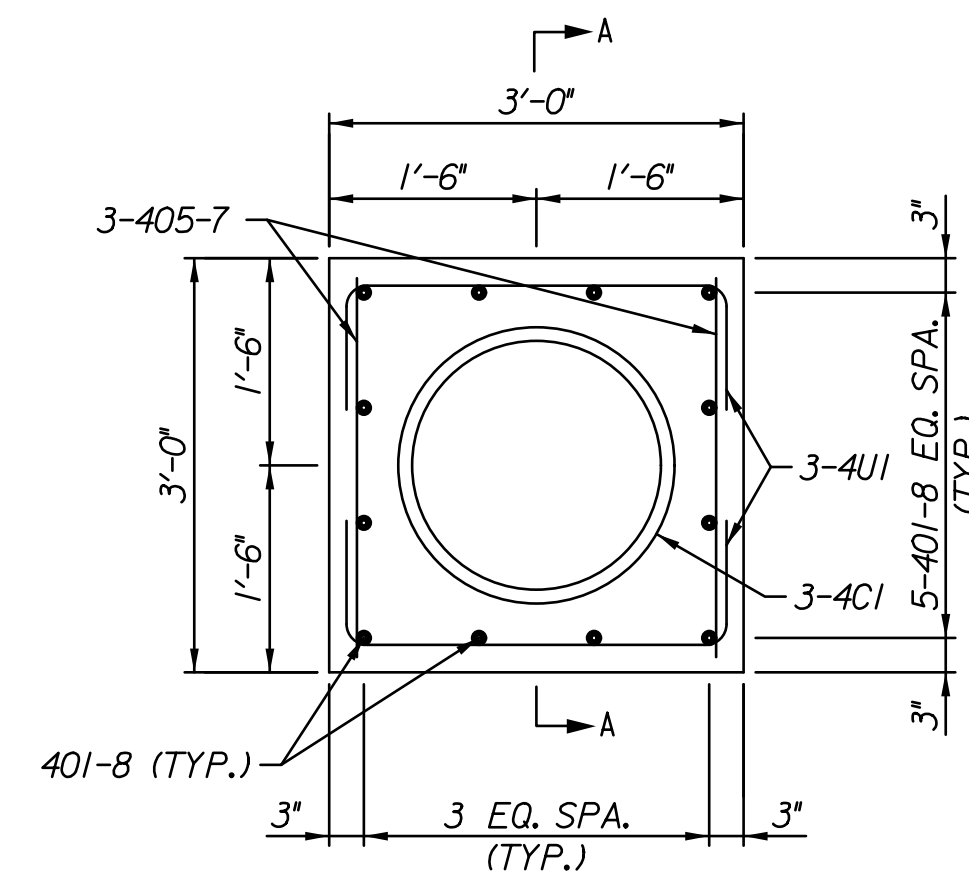
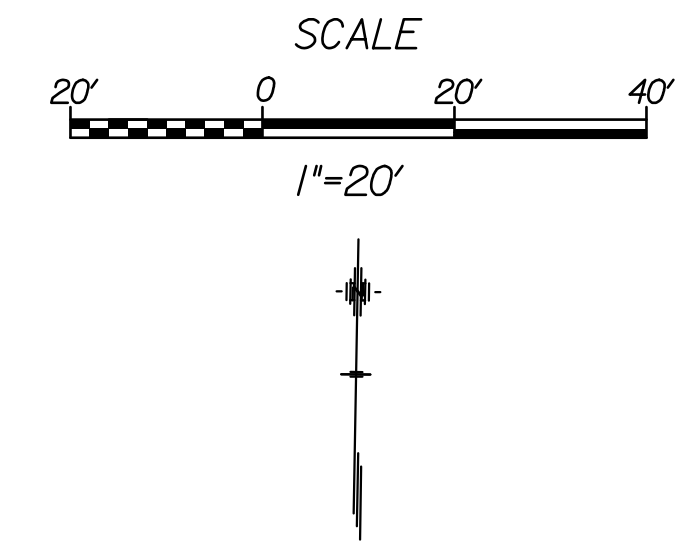
Notes:
(XXX) For control and coordinate data, See Sheet 3

Contractor shall see streetscape plans for all items of construction beyond the back of curb, See Sheets 9-15

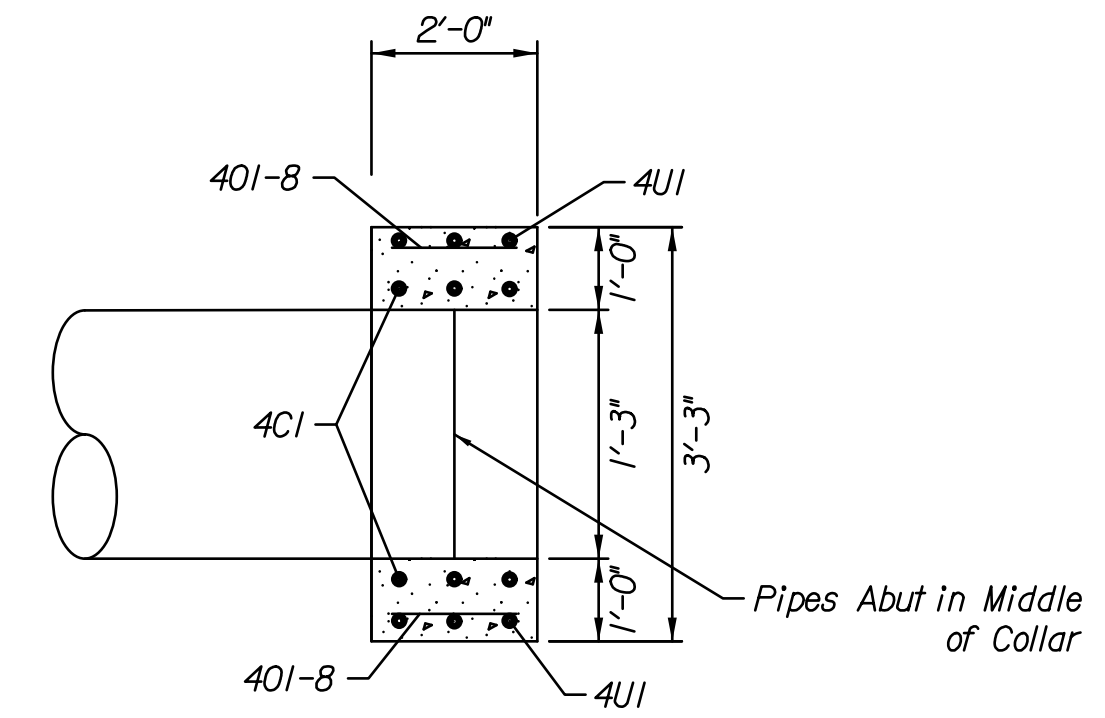
Contractor shall see sidewalk quadrant detail sheets for more information on the construction of the corners, See Sheets 18-31

All other material and labor needed to connect the existing storm sewer to the proposed storm sewer or inlets shall be considered SUBSIDIARY to the bid item, "Connect to Existing Structure".

*Contractor is to field verify all utility locations and elevations prior to excavating. Utility locations and elevations are shown to the best knowledge of the utility companies.



SECTION THRU COLLAR

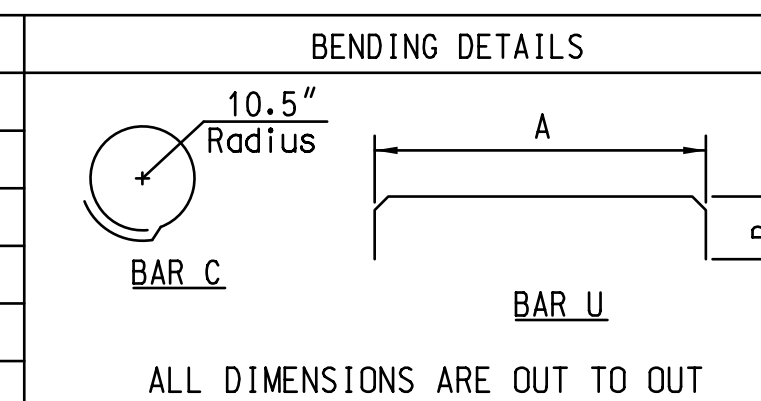


SECTION A-A

CONCRETE COLLAR DETAILS (15") NOT TO SCALE

REINFORCING BARS FOR ONE CONCRETE COLLAR - 15" DIA.

QUANTITY	MARK	SIZE	TYPE	A	B	LENGTH
3	4C1	4	C	-	-	6'-6"
6	4U1	4	U	2'-8"	0'-10"	4'-4"
12	401-8	4	-	-	-	1'-8"
6	405-7	4	-	-	-	2'-7"



WEIGHT OF REBAR = 55 LBS. PER COLLAR
VOLUME OF CONCRETE = 0.67 CU. YDS. PER COLLAR

ALL DIMENSIONS ARE OUT TO OUT

CONCRETE COLLAR LIST

STATION	SIDE	QTY	SIZE	CROSS ROAD PIPE	EXTENSION PIPE
19+97.36	18.45' Rt.	1	15"	15" RCP	15" RCP

BACK OF CURB LOCATION & ELEVATIONS				
STATION	OFFSET	ELEVATION	DESCRIPTION	
12	22+37.46	22.47' Rt.	1297.07	Curb & Gutter High Point

CP #213
Set PK Nail in center for Aerial Target.
N 1686569.7900 E 1652062.5360
29.81' Lt., Sta. 24+06.94 Elev. 1,296.84

CP #214
Set PK Nail in center for Aerial Target.
N 1,686,511.2070 E 1,652,156.5890
30.47' Rt., Sta. 24+99.91 Elev. 1,296.87

BM #1
COW Bench Mark Hub located on the Northeast corner of 1st Street and Washington Avenue
1. North of the C of 1st Street 29.30' N
2. East of the C of Washington Avenue 83.90' E
3. South of the south face of sidewalk 1.00' S
4. North of the back of curb 6.40' N
5. East of the center of the light pole 52.20' E
N: 1,686,571.6474; E: 1,652,193.1011 Elev. = 1296.80

Tran Systems
245 NORTH WACO
SUITE 222
WICHITA, KANSAS 67202
PHONE: 316-303-3000
FAX: 316-303-0166

CONSULTANTS:
LK ARCHITECTURE, INC.
345 RIVERVIEW
SUITE 200
WICHITA, KANSAS 67208
PHONE: 316-268-0230

1ST STREET IMPROVEMENTS
SANTA FE TO WASHINGTON IN OLD TOWN
WICHITA, KANSAS
WICHITA CITY OF

REVISIONS:	MARK	DATE	DESCRIPTION

PROJ NO: 472-85285
SCALE: 1"=20'
DATE: 7/5/2017
DESIGNED BY: TAU
DRAWN BY: TAU
CHECKED BY: MDB

SHEET TITLE:
1ST STREET IMPROVEMENTS

SHEET NO.
7
SHEET 7 OF 90