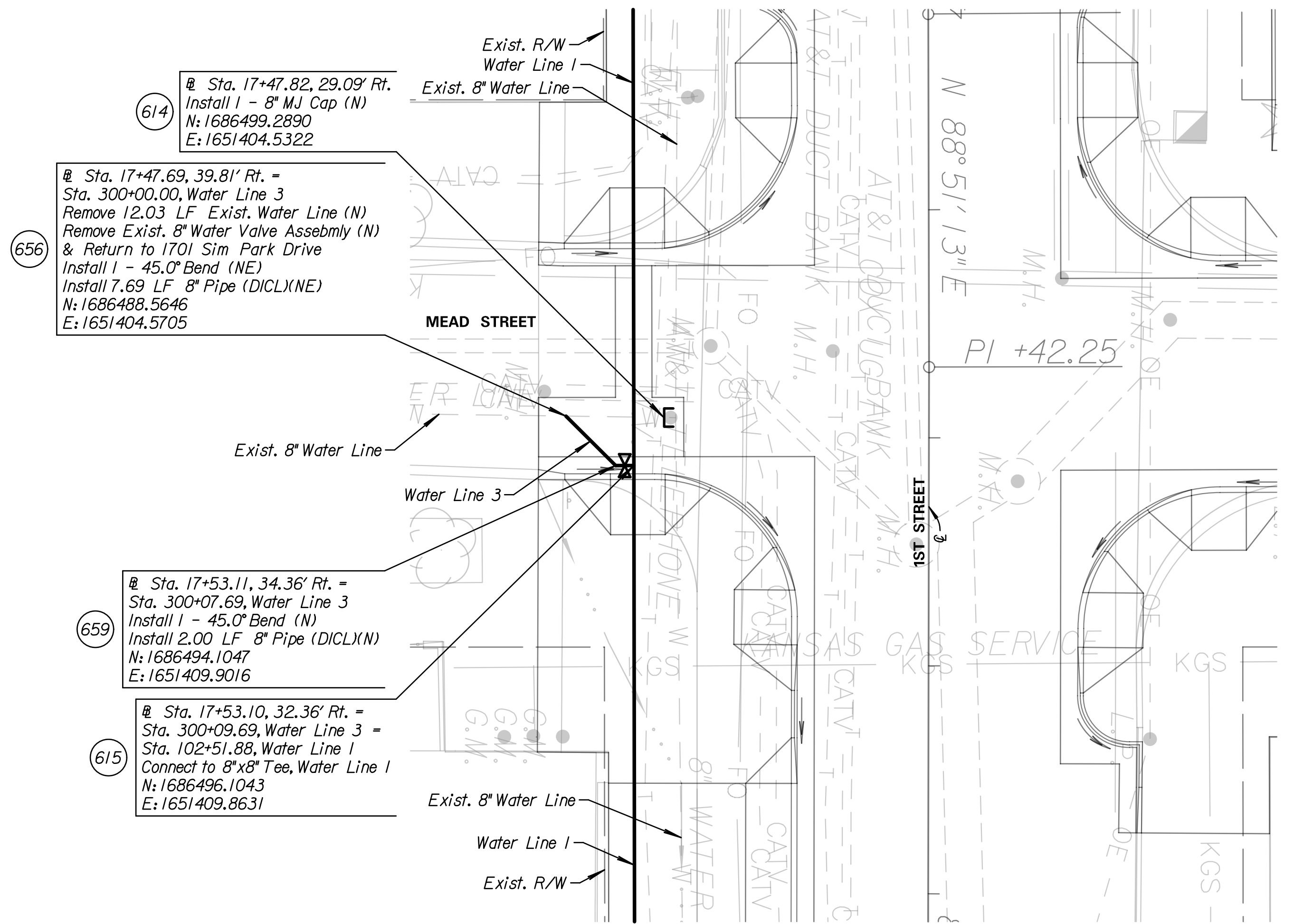


Note:  
For Water Line Information and details,  
See Sheets 87-88

It is the Contractor's responsibility to contact & coordinate with the utility companies prior to the installation of the water lines to locate any existing utilities that have not been previously located or new utilities that have been relocated.



Utilities shown in the profile are shown at approximate depths. The Contractor is responsible for field verifying the locations of utilities prior to construction in that area.

**Tran Systems**  
245 NORTH WACO  
SUITE 222  
WICHITA, KANSAS 67202  
PHONE: 316-303-3000  
FAX: 316-303-0166

Professional Engineer  
24843  
7-5-17  
KANSAS

CONSULTANTS:  
**LK ARCHITECTURE, INC.**  
345 RIVERVIEW  
SUITE 200  
WICHITA, KANSAS 67208  
PHONE: 316-268-0230

1ST STREET IMPROVEMENTS  
SANTA FE TO WASHINGTON IN OLD TOWN  
WICHITA, KANSAS  
CITY OF WICHITA

REVISIONS:	MARK	DATE	DESCRIPTION

PROJ NO: 472-85285  
SCALE: 1"=10'  
DATE: 7/5/2017  
DESIGNED BY: TAU  
DRAWN BY: TAU  
CHECKED BY: MDB

SHEET TITLE:  
**1ST STREET WATERLINE IMPROVEMENTS WATER LINE 2 & 3**

SHEET NO.  
**89**  
SHEET 89 OF 90

7/5/2017 4:00:24 PM c:\tran\systems\paw\local\transys\paw\taummed\048273\CTL-W01-103.dgn