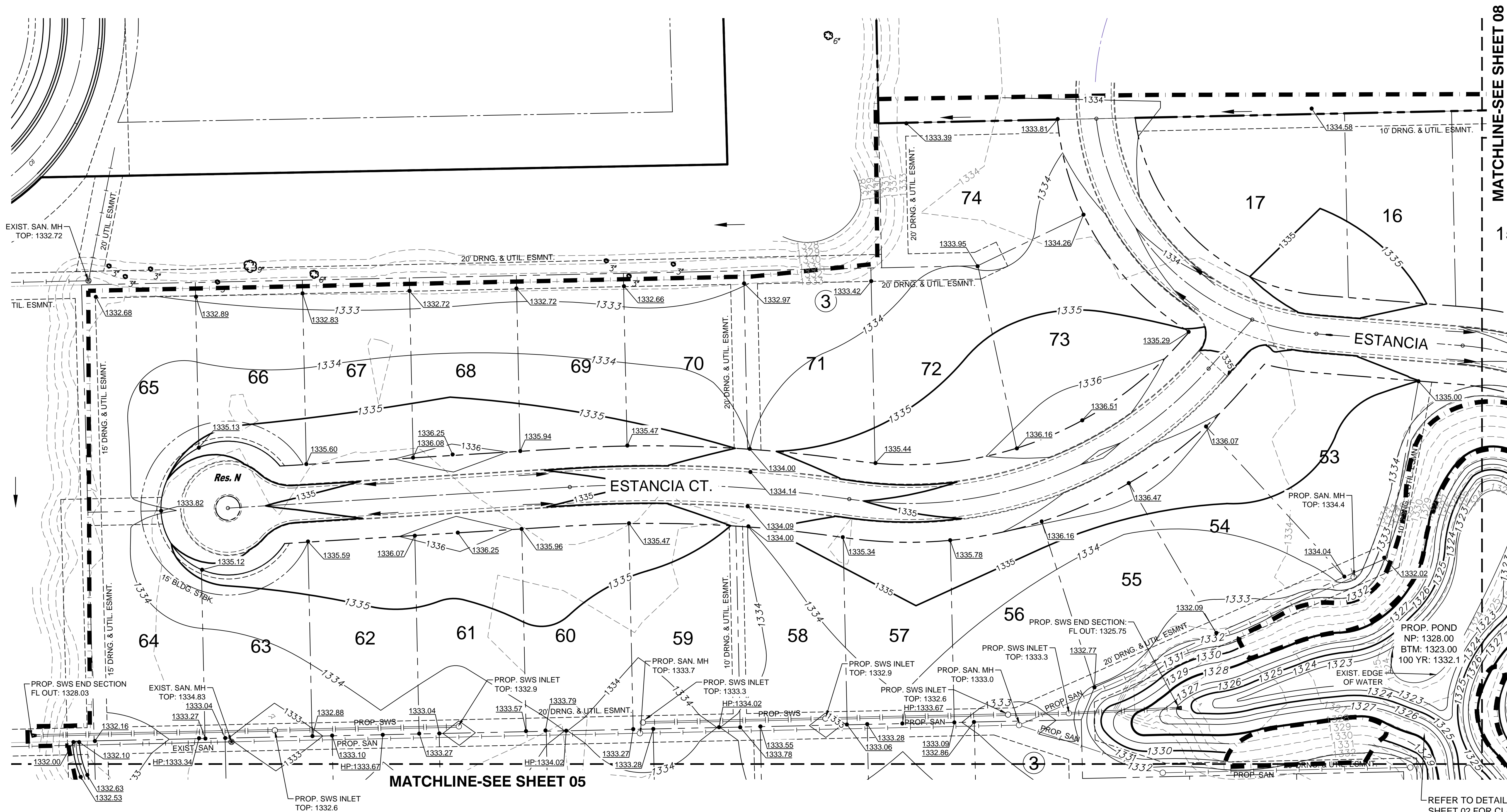


PLOTTED: Tuesday, July 18, 2017 @ 02:55PM

J:\PROJECTS\2017\1401010462 - PREMIER ESTANCIA\DWG\CIVIL\CAD\GRD\PH2\462\GRAD\_PLAN\_1.PHP2.DWG



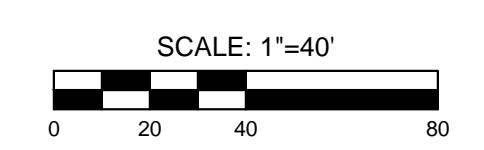
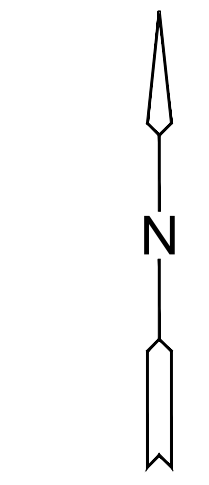
MATCHLINE-SEE SHEET 08

MATCHLINE-SEE SHEET 05

REFER TO DETAILS 3 & 7 ON SHEET 02 FOR CLAY LINER AND BENTONITE REQUIREMENTS

**LEGEND**

- 1250 --- EXISTING CONTOUR
- 1250 — PROPOSED CONTOUR
- W WATER LINE
- PROP. STORMWATER SEWER
- |— EXISTING SANITARY SEWER
- |— EXISTING STORMWATER SEWER
- |— UGT EXISTING UNDERGROUND TELEPHONE
- |— UGE EXISTING UNDERGROUND ELECTRICAL
- |— OHE EXISTING OVERHEAD ELECTRICAL
- |— LIMITS OF GRADING
- 1329.86 SPOT ELEVATIONS
- ▨ TREE REMOVAL



STORMWATER DRAIN #406  
**ESTANCIA ADDITION**  
 PHASE 2

©2017 MKEC Engineering All Rights Reserved www.mkec.com  
 These drawings and their contents, including, but not limited to, all concepts, designs, & ideas are the exclusive property of MKEC Engineering (MKEC), and may not be used or reproduced in any way without the express consent of MKEC.

**GRADING PLAN 02**

PROJECT NO.	468-85071	
DATE	JULY 2017	
SCALE	1"=40'	
DESIGNED	DRAWN	CHECKED
MLP	MLP	GJA
NO.	REVISION	DATE

SHEET NO.  
 06 OF 18