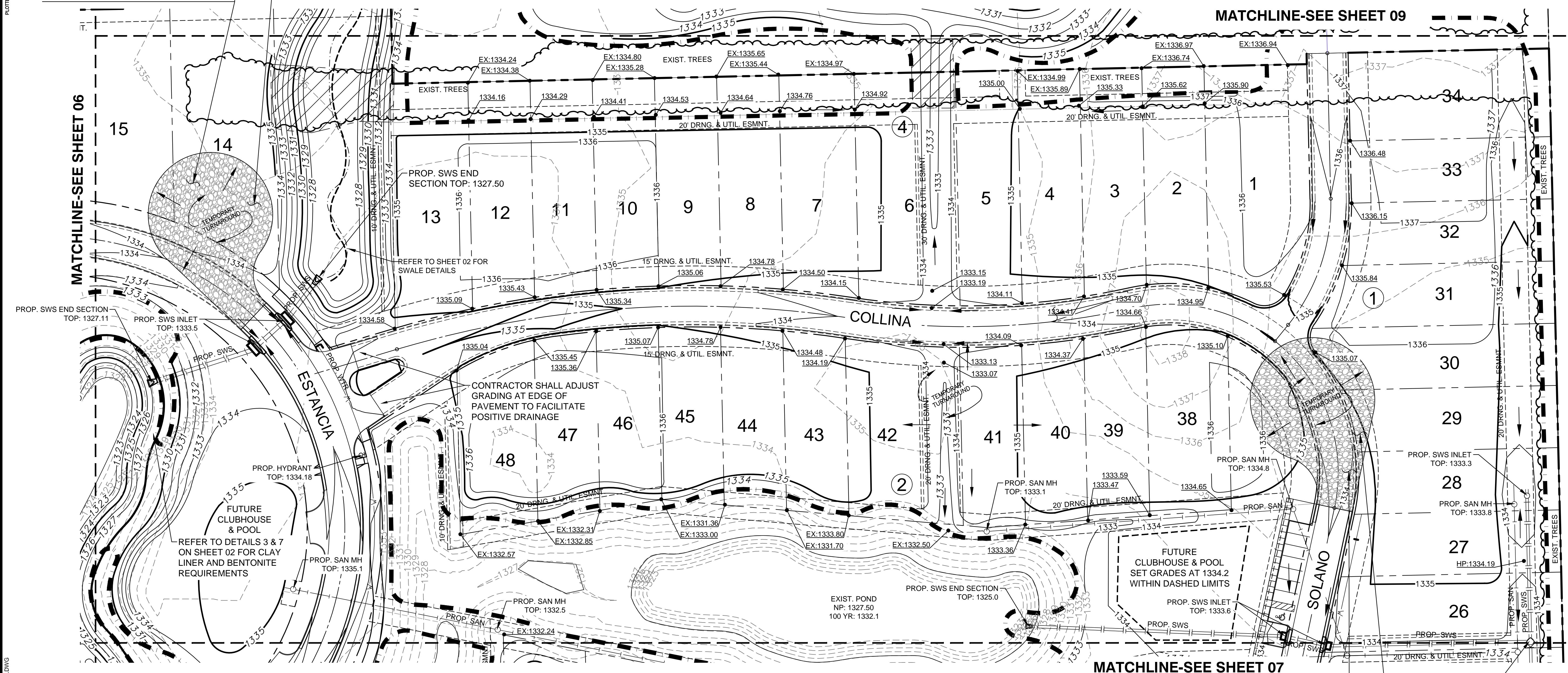


STORMWATER DRAIN #406
ESTANCIA ADDITION
PHASE 2

CONSTRUCT 972 S.Y. OF TEMPORARY GRAVEL TURNAROUND, 6" THICK GRAVEL DRIVE SURFACE (AB-3) ON 95% COMPACTED SUBGRADE. GRADE SURFACE TO PROVIDE SMOOTH DRIVING CONDITIONS AND ENSURE POSITIVE DRAINAGE.

CONTRACTOR TO GRADE AREA SURROUNDING TEMPORARY TURNAROUND TO DRAIN AWAY FROM GRAVEL SURFACE

NOTE: ACCESS AND ROUTE TO BORROW AREA SHALL BE COORDINATED WITH FIELD ENGINEER, COST SUBSIDIARY TO EARTHWORK ITEMS.



MATCHLINE-SEE SHEET 06

MATCHLINE-SEE SHEET 09

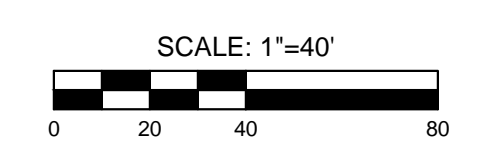
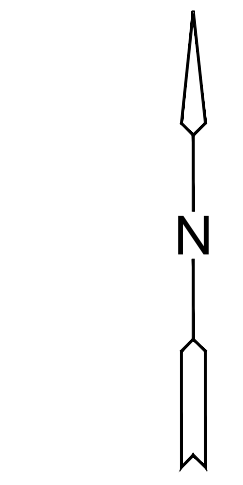
MATCHLINE-SEE SHEET 07

LEGEND

- 1250 --- EXISTING CONTOUR
- 1250 — PROPOSED CONTOUR
- W — WATER LINE
- O — PROP. STORMWATER SEWER
- I — EXISTING SANITARY SEWER
- I — EXISTING STORMWATER SEWER
- UCT — EXISTING UNDERGROUND TELEPHONE
- UGE — EXISTING UNDERGROUND ELECTRICAL
- OHE — EXISTING OVERHEAD ELECTRICAL
- — — LIMITS OF GRADING
- 1329.86 SPOT ELEVATIONS
- ▨ TREE REMOVAL

CONSTRUCT 972 S.Y. OF TEMPORARY GRAVEL TURNAROUND, 6" THICK GRAVEL DRIVE SURFACE (AB-3) ON 95% COMPACTED SUBGRADE. GRADE SURFACE TO PROVIDE SMOOTH DRIVING CONDITIONS AND ENSURE POSITIVE DRAINAGE.

CONTRACTOR TO GRADE AREA SURROUNDING TEMPORARY TURNAROUND TO DRAIN AWAY FROM GRAVEL SURFACE



©2017 MKEC Engineering All Rights Reserved
These drawings and their contents, including, but not limited to, all concepts, designs, & ideas are the exclusive property of MKEC Engineering (MKEC), and may not be used or reproduced in any way without the express consent of MKEC.

GRADING PLAN 04

PROJECT NO.	468-85071	
DATE	JULY 2017	
SCALE	1"=40'	
DESIGNED	DRAWN	CHECKED
MLP	MLP	GJA
NO.	REVISION	DATE

J:\PROJECTS\2017\1401010462 - PREMIER ESTANCIA\DWG\CIVIL\CAD\GRD\PH2\468-GRAD_PLAN_1.PH2.DWG