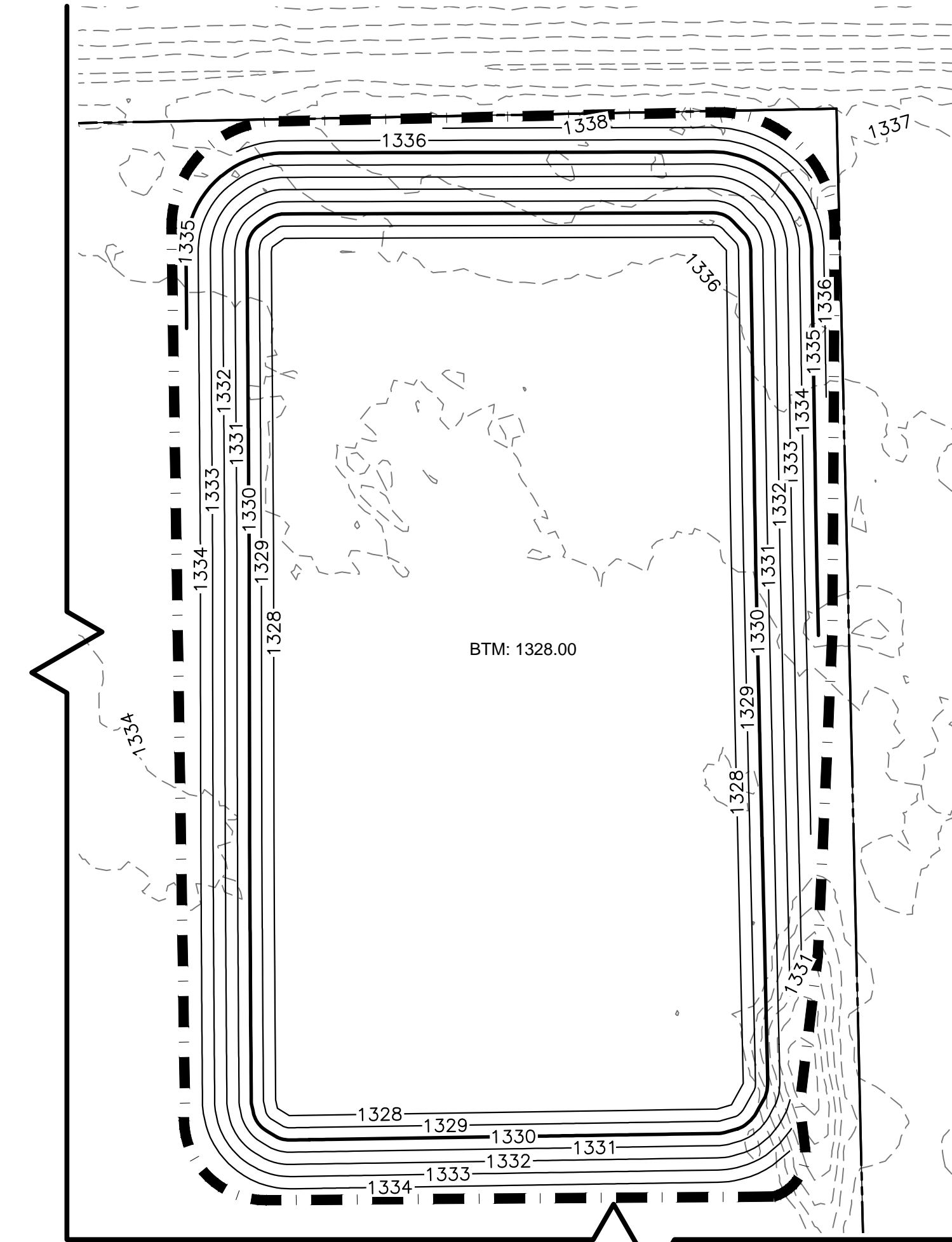
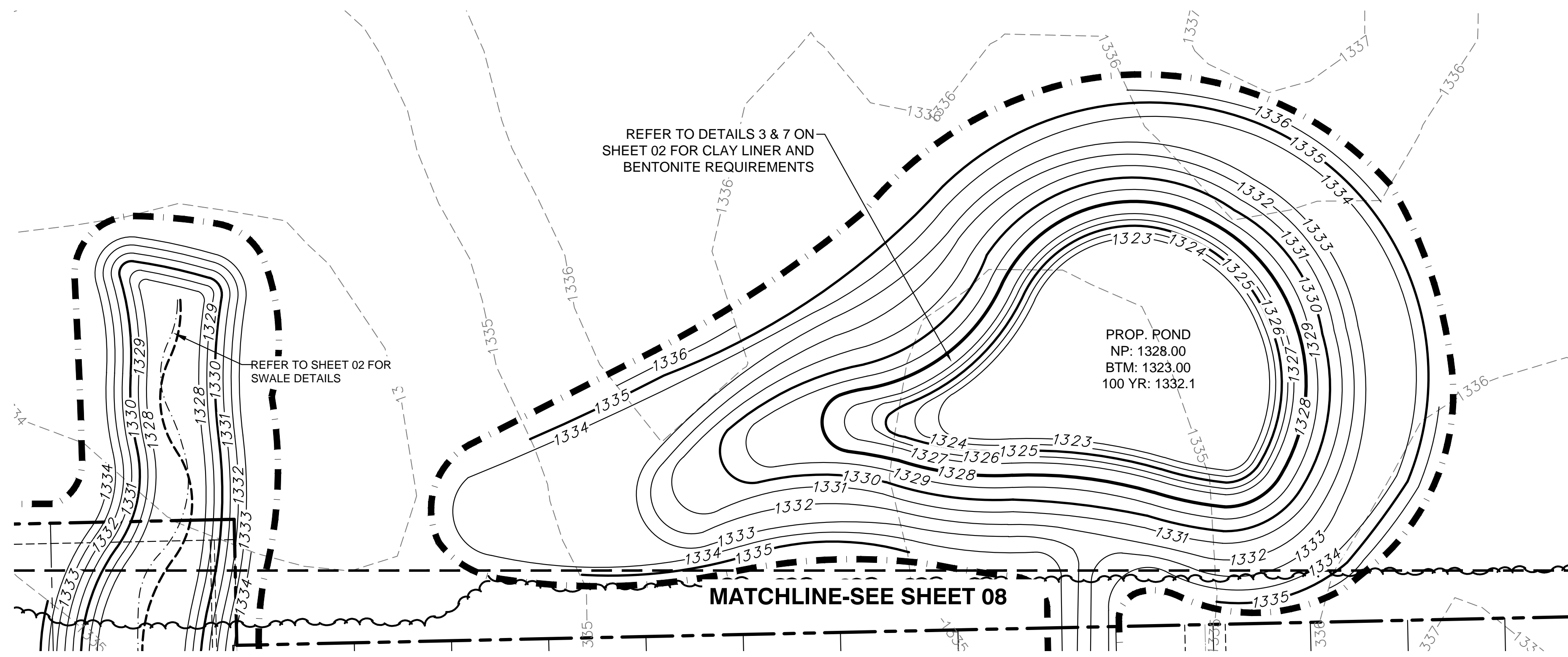


PLOTTED: Tuesday, July 18, 2017 @ 02:45PM

J:\PROJECTS\2017\1401010462 - PREMIER ESTANCIA\05-CIVIL\CAD\GRD\PH2\1462-GRAD_PLAN_1.PH2.DWG

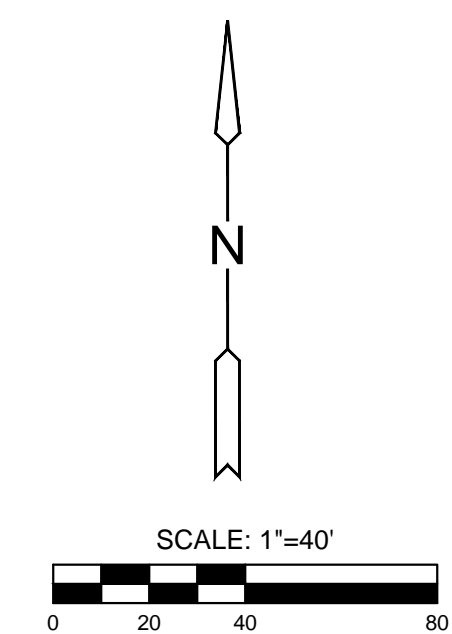


BORROW AREA - COMMERCIAL PROPERTY (NE CORNER)

NOTE:
ACCESS AND ROUTE TO BORROW AREA SHALL BE COORDINATED WITH FIELD ENGINEER, COST SUBSIDIARY TO EARTHWORK ITEMS.

LEGEND

- 1250 -- EXISTING CONTOUR
- 1250 — PROPOSED CONTOUR
- W — WATER LINE
- ○ — PROP. STORMWATER SEWER
- — — EXISTING SANITARY SEWER
- ○ — EXISTING STORMWATER SEWER
- — — UGT EXISTING UNDERGROUND TELEPHONE
- — — UGE EXISTING UNDERGROUND ELECTRICAL
- — — OHE EXISTING OVERHEAD ELECTRICAL
- — — LIMITS OF GRADING
- 1329.86 SPOT ELEVATIONS
- ▨ TREE REMOVAL



STORMWATER DRAIN #406
ESTANCIA ADDITION
PHASE 2

©2017 MKEC Engineering All Rights Reserved www.mkec.com
These drawings and their contents, including, but not limited to, all concepts, designs, & ideas are the exclusive property of MKEC Engineering (MKEC), and may not be used or reproduced in any way without the express consent of MKEC.

GRADING PLAN 05

PROJECT NO.	468-85071	
DATE	JULY 2017	
SCALE	1"=40'	
DESIGNED	DRAWN	CHECKED
MLP	MLP	GJA

NO.	REVISION	DATE