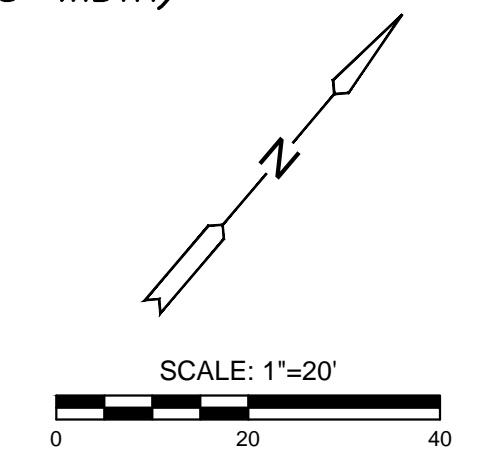
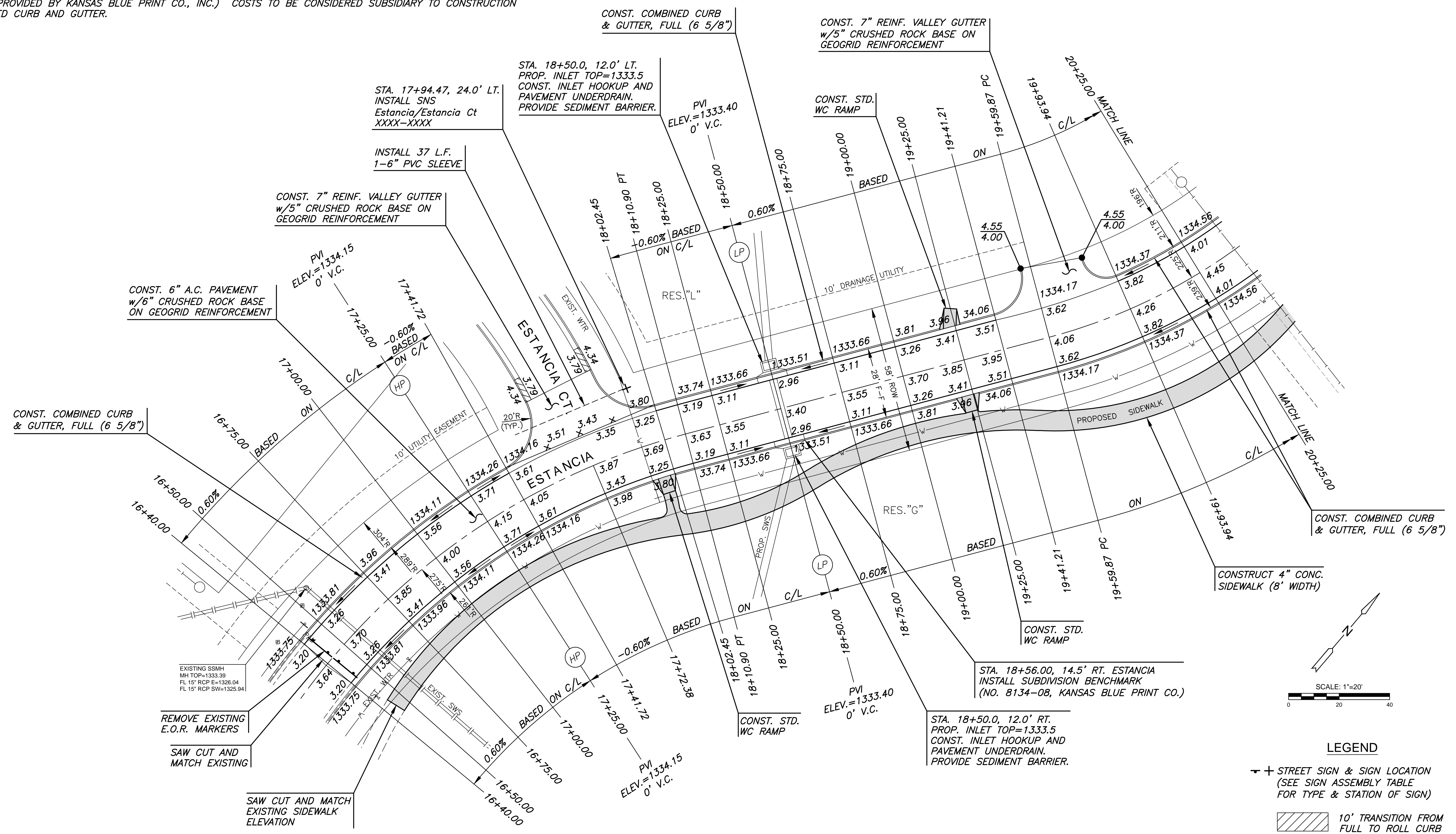


J:\PROJECTS\2017\1401010482 - PREMIER ESTANCIA\02-CIVIL\04-PAV\RESIDENTIAL\PH2\1482-EP-04-PH2A.DWG
 PLOTTED: Wednesday, July 19, 2017 9:08:15 AM

SUBDIVISION BENCH MARKS				
NO.	STREET AND STATION	FROM CL	DESCRIPTION	ELEVATIONS
1	ESTANCIA, STA. 18+56.00	14.5' RT	TOP OF CURB AT NORTH END OF INLET HOOKUP	

NOTE: CONTRACTOR SHALL INSTALL SUBDIVISION BENCH MARKS ("FLAT SURVEY MARKERS NO. 8134-08 3" TOP DIAMETER" PROVIDED BY KANSAS BLUE PRINT CO., INC.) COSTS TO BE CONSIDERED SUBSIDIARY TO CONSTRUCTION OF COMBINED CURB AND GUTTER.



LEGEND

- STREET SIGN & SIGN LOCATION (SEE SIGN ASSEMBLY TABLE FOR TYPE & STATION OF SIGN)
- 10' TRANSITION FROM FULL TO ROLL CURB

- NOTES:**
- TOP OF CURB ELEVATIONS SHOWN ARE FOR FULL CURB. CONSTRUCT CURB AND GUTTER AS NOTED.
 - PVC SLEEVES TO BE BURIED AT A DEPTH OF 2' TO TOP OF SLEEVE, MINIMUM.



PAVING & INCIDENTAL DRAINAGE FOR
ESTANCIA ADDITION
 PHASE 2A

©2017 MKEC Engineering All Rights Reserved
 These drawings and their contents, including, but not limited to, all concepts, designs, & ideas are the exclusive property of MKEC Engineering (MKEC), and may not be used or reproduced in any way without the express consent of MKEC.

ESTANCIA		
PROJECT NO.	472-85244	
DATE	JUNE 2017	
SCALE	1" = 20'	
DESIGNED	DRAWN	CHECKED
DFL	RWB	GJA
NO.	REVISION	DATE
SHEET NO.		
08 OF 31		