

PLAT POINTS			
Point #	Northing	Easting	Desc.
500	1710968.02	1625399.69	PI
502	1710967.33	1625367.70	PI
509	1710455.21	1625338.27	PI
510	1710620.23	1625373.56	PI
511	1710379.97	1625328.49	PI
513	1710362.90	1625312.10	PI
540	1710255.13	1625378.27	PI
552	1710314.35	1625329.99	PI
553	1710330.58	1625310.28	PI
555	1710248.81	1625340.88	PI
556	1710747.72	1625011.78	PI
557	1710755.37	1625237.41	PI
572	1710341.80	1625208.98	PI
588	1710311.38	1625218.90	PI
604	1709986.55	1625379.64	PI
608	1710124.38	1625403.70	PI
610	1709965.02	1625380.96	PI
616	1709766.23	1625422.35	PI
620	1709861.20	1625420.32	PI
649	1709937.33	1625145.08	PI
650	1709939.27	1625235.67	PI
651	1709948.51	1624984.70	PI
657	1709765.54	1625390.36	PI
658	1710116.90	1625372.59	PI
674	1710717.33	1624704.08	PI
676	1710676.64	1624643.40	PI
702	1710340.34	1624944.70	PI
703	1710360.40	1624770.79	PI
718	1710372.77	1624694.23	PI
733	1710328.49	1624773.16	PI
735	1710309.80	1624935.13	PI
737	1710457.10	1624609.91	PI
738	1710334.47	1624525.32	PI
750	1709678.19	1624658.41	PI
784	1709680.97	1624788.38	PI
785	1709969.07	1624857.85	PI
786	1709933.43	1624683.98	PI
788	1709913.18	1624652.04	PI
789	1709934.41	1624635.14	PI
801	1709952.22	1624533.91	PI
804	1710008.43	1624567.24	PI
845	1709708.28	1624787.80	PI
846	1709866.85	1624703.94	PI
847	1709885.68	1624719.95	PI
849	1709936.60	1624858.24	PI
850	1709916.93	1624979.58	PI
851	1709905.33	1625145.77	PI
852	1709907.28	1625236.35	PI
853	1709941.39	1625336.77	PI
855	1709937.62	1625361.87	PI

PLAT POINTS			
Point #	Northing	Easting	Desc.
856	1709860.52	1625388.32	PI
857	1710240.86	1625375.70	PI
859	1710449.83	1625375.81	PI
861	1710464.03	1625372.88	PI
862	1710613.54	1625404.85	PI
863	1710737.02	1625374.67	PI
865	1710758.60	1625373.66	PI
867	1710855.80	1625402.32	PI
882	1710994.65	1624116.17	PI
892	1710995.90	1624174.36	PI
979	1710355.28	1623524.41	PI
984	1710704.11	1623496.20	PI
985	1710735.56	1623535.06	PI
986	1710677.67	1623538.63	PI
1004	1709915.15	1623519.64	PI
1043	1710835.86	1624214.74	PI
1044	1710827.62	1624207.43	PI
1046	1710739.52	1623964.85	PI
1048	1710748.80	1623749.94	PI
1049	1710690.91	1623753.51	PI
1050	1710682.15	1623956.31	PI
1051	1710789.12	1624250.80	PI
1052	1710811.78	1624270.92	PI
1053	1710805.53	1624307.41	PI
1054	1710796.68	1624416.66	PI
1055	1710490.03	1624562.17	PI
1056	1710367.41	1624477.58	PI
1057	1710356.01	1624470.09	PI
1059	1710373.71	1624333.99	PI
1061	1710380.15	1624103.80	PI
1063	1710388.40	1623717.11	PI
1065	1710379.86	1623567.95	PI
1066	1710322.16	1623561.86	PI
1067	1710331.43	1623727.97	PI
1068	1710323.69	1624090.52	PI
1069	1710316.59	1624344.09	PI
1070	1710304.09	1624444.15	PI
1071	1709997.25	1624496.76	PI
1072	1709993.08	1624492.73	PI
1074	1709945.59	1624353.19	PI
1076	1709940.41	1624073.92	PI
1078	1709939.28	1623782.13	PI
1080	1709947.72	1623557.59	PI
1081	1709889.94	1623562.82	PI
1082	1709881.91	1623773.64	PI
1083	1709883.10	1624082.85	PI
1084	1709887.99	1624346.38	PI
1085	1709956.66	1624538.19	PI
1086	1709691.38	1624658.13	PI
1087	1710863.34	1624312.09	PI

PLAT POINTS			
Point #	Northing	Easting	Desc.
1088	1710854.49	1624421.34	PI
1089	1710740.32	1624613.42	PI
1090	1710754.61	1624661.38	PI
1091	1710779.36	1625016.58	PI
1092	1710786.61	1625230.48	PI
1093	1710774.82	1625327.05	PI
1095	1710781.48	1625350.37	PI
1096	1710855.05	1625370.33	PI

PAVING POINTS			
Point #	Northing	Easting	Desc.
9000	1710353.54	1623539.02	PC
9001	1710359.92	1623722.54	PRC
9002	1710351.92	1624097.16	PRC
9003	1710345.15	1624339.04	PRC
9004	1710327.08	1624463.34	PT
9005	1710317.81	1624481.87	END

SIDEWALK POINTS			
Point #	Northing	Easting	Desc.
9500	1710352.09	1623489.55	END
9501	1710351.91	1623487.53	PT
9502	1710357.25	1623460.07	PRC
9503	1710357.04	1623413.88	PRC
9504	1710354.69	1623397.14	PC
9505	1710356.29	1623389.41	END
9506	1710372.36	1623391.35	PRC
9507	1710404.22	1623390.43	PRC
9508	1710461.10	1623390.60	PRC
9509	1710506.25	1623387.68	PRC
9510	1710529.81	1623382.72	END
9511	1710322.64	1623393.88	PRC
9512	1710296.68	1623394.91	PRC
9513	1710244.16	1623397.15	PRC
9514	1710208.02	1623398.87	PRC
9515	1710189.99	1623396.64	END

ESTANCIA CT. SIDEWALK		
STA. 10+00.00 TO 13+44.55		
1 CIRCULAR CURVE		
START STATION:	10+00.00	
END STATION:	10+18.20	
RADIUS:	100.00'	
2 CIRCULAR CURVE		
START STATION:	10+18.20	
END STATION:	10+54.78	
RADIUS:	70.00'	
3 CIRCULAR CURVE		
START STATION:	10+54.78	
END STATION:	11+07.98	
RADIUS:	50.00'	
4 CIRCULAR CURVE		
START STATION:	11+07.98	
END STATION:	11+34.27	
RADIUS:	50.00'	
5 CIRCULAR CURVE		
START STATION:	11+34.27	
END STATION:	11+84.58	
RADIUS:	100.00'	
6 CIRCULAR CURVE		
START STATION:	11+84.58	
END STATION:	12+16.73	
RADIUS:	70.00'	
7 CIRCULAR CURVE		
START STATION:	12+16.73	
END STATION:	12+74.27	
RADIUS:	110.00'	

8 CIRCULAR CURVE		
START STATION:	12+74.27	
END STATION:	13+20.34	
RADIUS:	70.00'	
9 CIRCULAR CURVE		
START STATION:	13+20.34	
END STATION:	13+44.55	
RADIUS:	65.00'	
ESTANCIA NORTH SIDEWALK		
STA. 10+00.00 TO 13+41.46		
1 TANGENT		
START STATION:	10+00.00	
END STATION:	10+07.89	
LENGTH:	7.89'	
2 CIRCULAR CURVE		
START STATION:	10+07.89	
END STATION:	10+25.13	
RADIUS:	25.00'	
3 CIRCULAR CURVE		
START STATION:	10+25.13	
END STATION:	10+73.15	
RADIUS:	50.00'	
4 CIRCULAR CURVE		
START STATION:	10+73.15	
END STATION:	11+01.50	
RADIUS:	50.00'	
5 TANGENT		
START STATION:	11+01.50	
END STATION:	11+03.54	
RADIUS:	2.03'	

CONTROL POINTS

CP #100
 5/8" rebar with MKEC Aluminum Cap
 N = 1709596.07 E = 1624178.12 Elev. = 1334.38
 South side of 37th Street N., West of entrance drive to Mid
 Kansas Pediatric Association at address 6837 W 37th St N.
 36 feet NW of fire hydrant
 6 feet south of south edge of asphalt

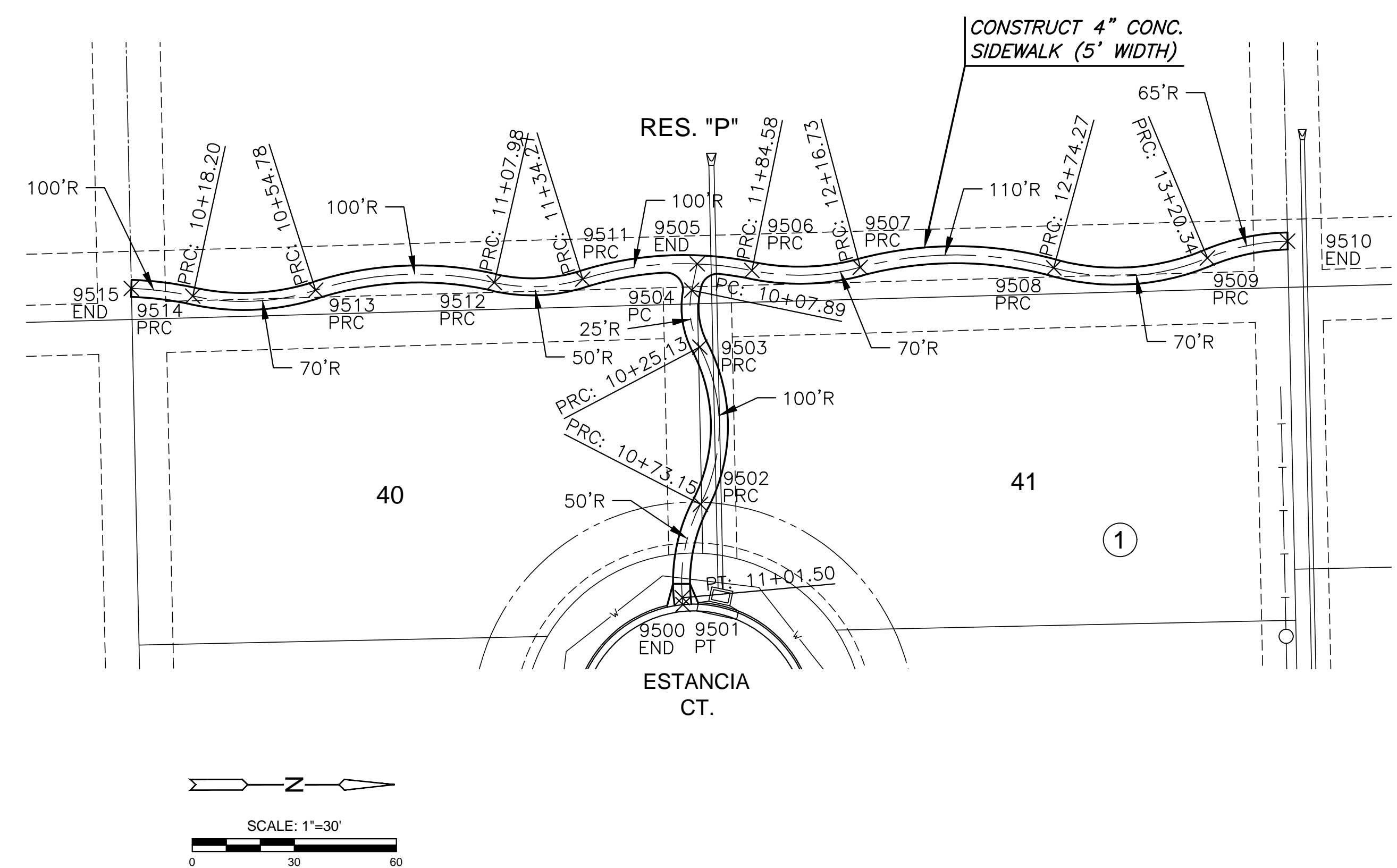
CP #101
 5/8 inch rebar with MKEC Aluminum Cap
 N = 1709656.12 E = 1625269.09 Elev. = 1331.35'
 North side of 37th St. N
 5 feet north of north edge of asphalt
 On extended line to the north with the centerline of Ridgeport
 Street

CP #102
 5/8 inch rebar with MKEC Aluminum Cap
 N = 1710347.41' E = 1622982.67' Elev. = 1330.50
 East Ridge Road in flowline of ditch
 45 feet northwest of 3rd powerpole north of 37th Street N

Horizontal and Vertical Datum:

Horizontal Datum: Kansas Coordinate System 1983 South Zone.
 (Horizontal coordinates modified to ground using a scale factor of
 1.000120014)

Vertical Datum: NAVD 88



EVERY ATTEMPT HAS BEEN MADE TO INSURE ALL COORDINATE VALUES SHOWN
 ARE AN ACCURATE AND TRUE REPRESENTATION OF THE CURRENT PLANS. ALL
 VALUES ARE TO BE CONFIRMED WITH THE FINAL SIGNED PLAN SET BEFORE USE.



PAVING & INCIDENTAL DRAINAGE FOR ESTANCIA ADDITION PHASE 2B

©2017
 MKEC Engineering
 All Rights Reserved
 www.mkec.com
 These drawings and their contents,
 including, but not limited to, all concepts,
 designs, & ideas are the exclusive
 property of MKEC Engineering (MKEC),
 and may not be used or reproduced in any
 way without the express consent of MKEC.

BUBBLE MAP 2 OF 2

PROJECT NO.	472-85387	
DATE	JUNE 2017	
SCALE	1" = 30'	
DESIGNED	DRAWN	CHECKED
DFL	JWC	GJA

NO.	REVISION	DATE