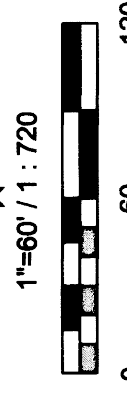


FINAL PLAT ESTANCIA ADDITION AN ADDITION TO WICHITA, SEDGWICK COUNTY, KANSAS

LEGEND

Date of Survey: April 28, 2015

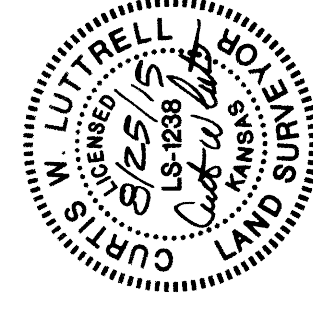
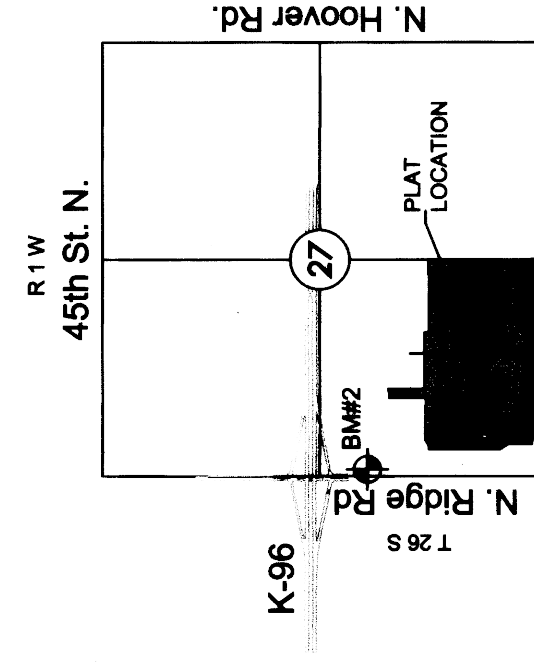
- ▲ = Section corner monument found
- ⊙ = Found 1/2" rebar w/ MKEC CLS 39 id. cap
- = Set 1/2" rebar w/ MKEC CLS 39 id. cap
- (M) = Measured
- (CM) = Calculated from measured
- (D) = Described
- ⊕ = Benchmark
- U.E. = Utility Easement
- D.E. = Drainage Easement



BENCHMARK
 BMK2 Square cut top of curb on west side of median island and 10 foot north of the south end of said median lying south of K-96 and Ridge Rd. being 338 feet S. of the NW corner SW 1/4, Sec. 27, T26S, R1W, 6th P.M. Elev. = 1335.80 NAVD88

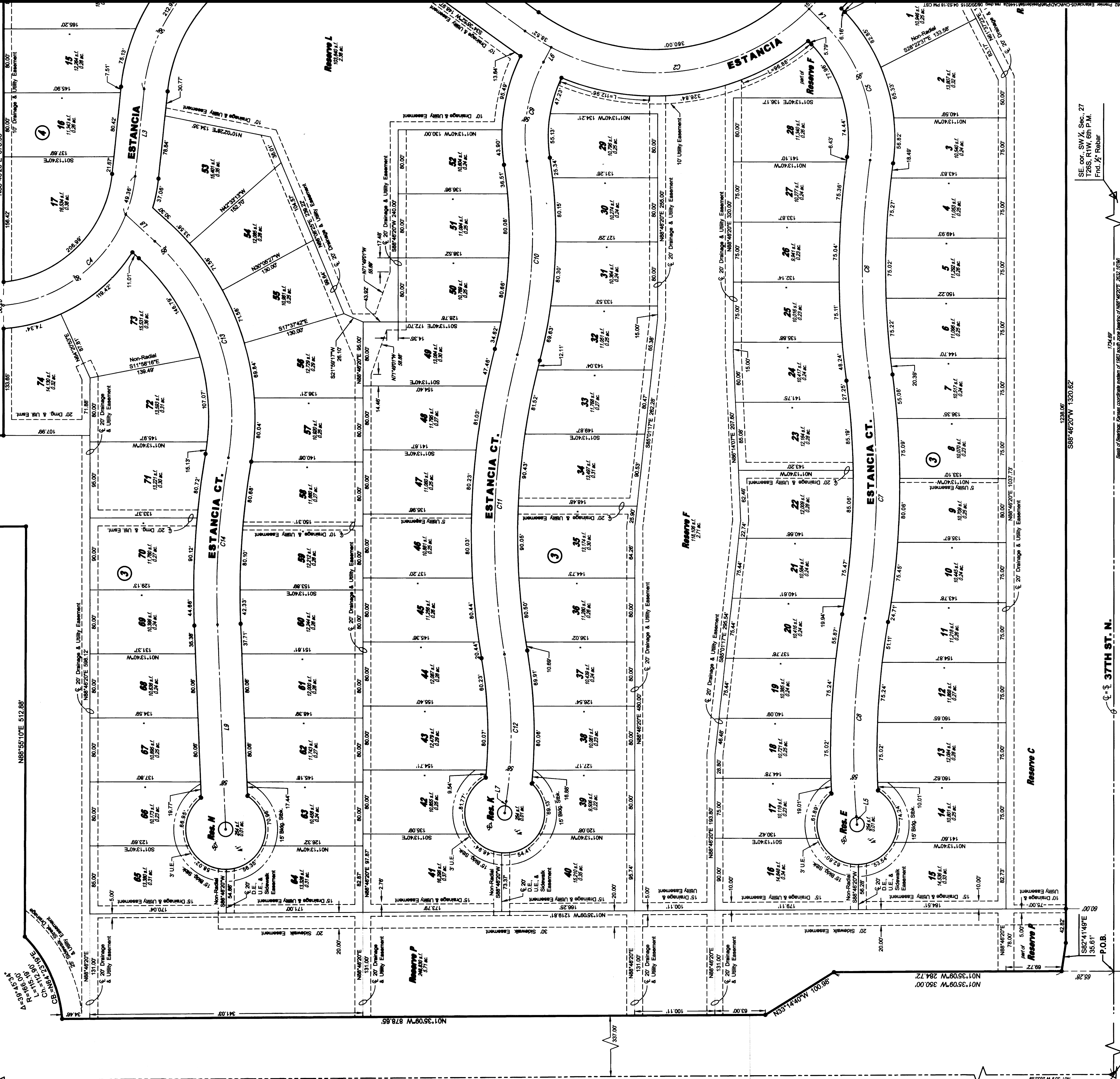
MINIMUM PAD ELEVATIONS (Lower of elevations)			
LOTS	BLOCK ELEVATION	PAVED	UNPAVED
15 - 41	3	1334.1	
49 - 56	3	1334.1	
64 - 74	3	1334.1	

VICINITY MAP



A=16°23'08"
 R=400.00'
 L=114.04'
 C=114.04'
 CB=N80°13'08"E

NW cor. SW 1/4, T26S, R1W, 6th P.M. Find. 1/2" Out.



SE cor. SW 1/4, Sec. 27, T26S, R1W, 6th P.M. Find. 1/2" Rebar

P.O.C.
 SW cor. SW 1/4, Sec. 27, T26S, R1W, 6th P.M. Find. 1/2" Rebar in asphalt roadway

