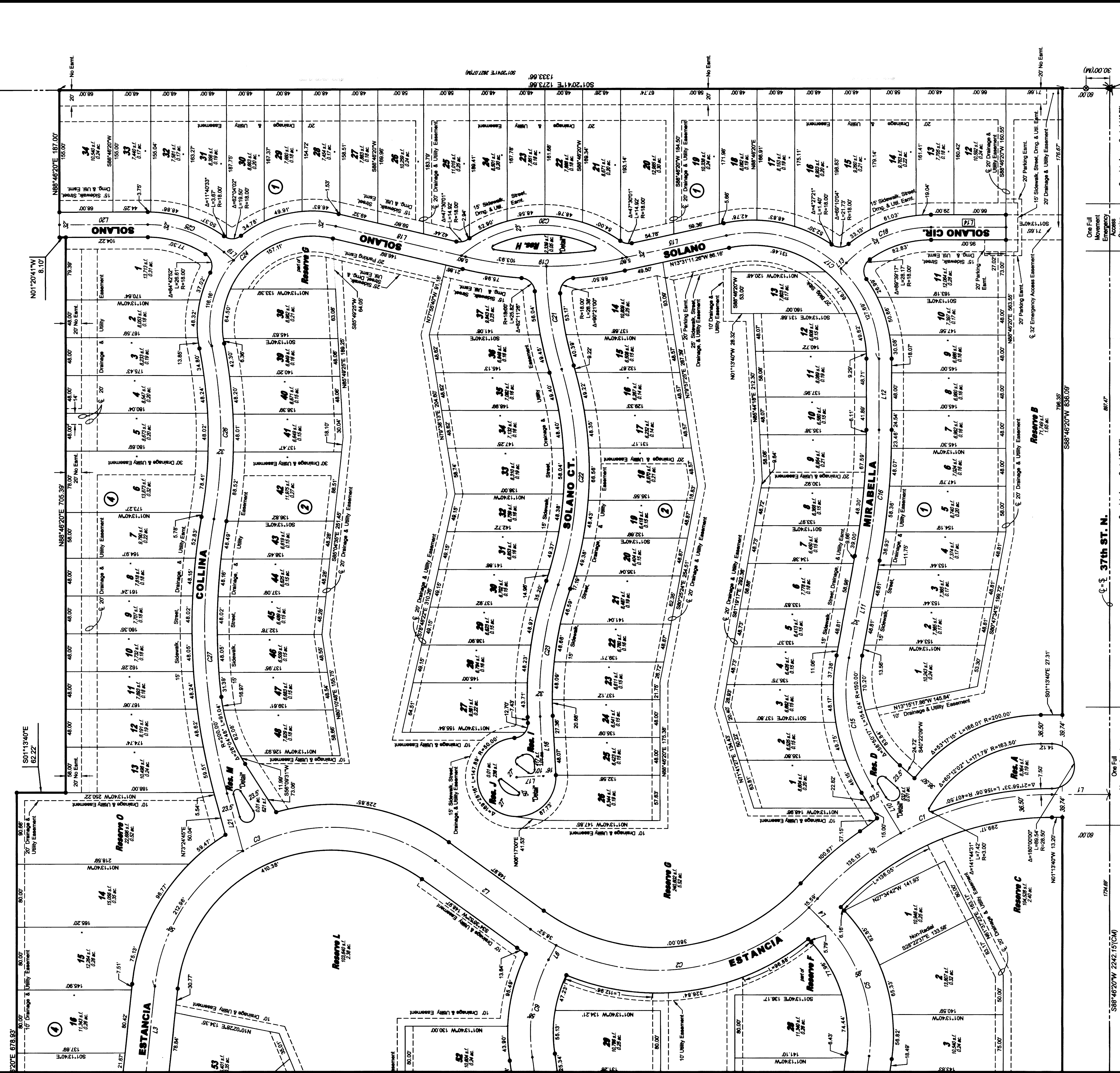


# FINAL PLAT

## ESTANCIA ADDITION

AN ADDITION TO WICHITA, SEDGWICK COUNTY, KANSAS

NE cor. SW 1/4, Sec. 27,  
T26S, R1W, 6th P.M.  
Frd. Limestone 1.5' deep  
with diavit in center



SE cor., SW 1/4, Sec. 27,  
T26S, R1W, 6th P.M.  
Frd. L. Rebar

Complete Access Control 146.70'  
30.00'

One Full  
Movement  
Emergency  
Opening  
Access  
60.00'

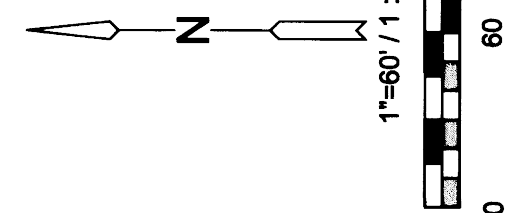
Complete Access Control 579.55'  
89.77'

One Full  
Movement  
Opening  
150.00'

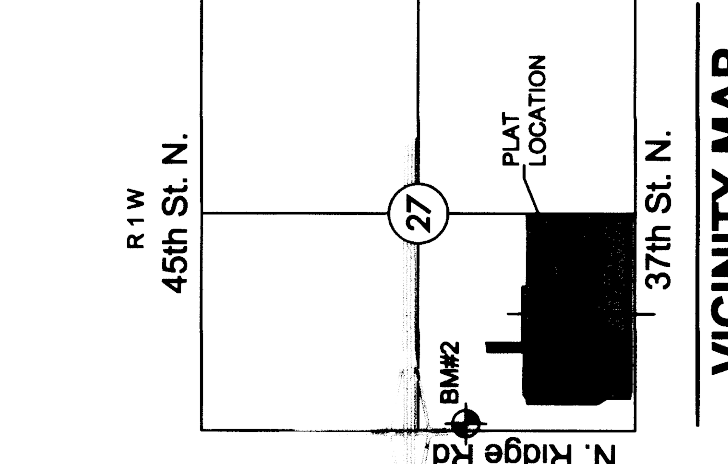
Complete Access Control 579.55'  
89.77'

One Full  
Movement  
Emergency  
Opening  
60.00'

- ### LEGEND
- Date of Survey: April 23, 2015
- ▲ = Section corner monument found
  - ⊕ = Found 3/4" rebar w/ MKEC CLS 39 lt. cap
  - = Set 3/4" rebar w/ MKEC CLS 39 lt. cap
  - (M) = Measured
  - (CM) = Calculated from measured
  - (D) = Described
  - ⊕ = Benchmark
  - U.E. = Utility Easement
  - D.E. = Drainage Easement



MINIMUM PAD ELEVATIONS (LOWEST OPENINGS)	
LOTS	BLOCK ELEVATION NAVD 89
1 - 48	1334.1
5, 6, 13, 14, 4	1334.1



### BENCHMARK

BM#2 Square cut top of curb on west side of median island and 10 foot north of the south end of said median lying south of K-96 and Ridge Rd. (being 338 feet S. of the NW corner SW 1/4, Sec. 27, T26S, R1W, 6th P.M.)  
Elev. = 1335.80 NAVD89

Basis of Bearing: Kansas coordinate system of 1983  
south zone grid bearing of N88°46'20"E on the south of  
the SW 1/4, Sec. 27, T26S, R1W, 6th P.M.  
This plat is surveyed and platted on NAD83 using  
Kansas state plane south zone coordinates, modified to  
the surface, having a combined adjustment scale factor  
of 1.000120014401728

