

INDEX OF SHEETS

1. TITLE SHEET
- 2-3. PLATS
- 4-5. TYPICAL SECTIONS
6. PAVING PLAN-RUTGERS
7. PAVING PLAN-RUTGERS/GREENSPPOINT
8. PAVING PLAN-GREENSPPOINT/PARKDALE
9. PAVING PLAN-PARKDALE
10. PAVING PLAN-RUTGERS COURT (N)
11. PAVING PLAN-RUTGERS COURT (S)
12. PAVING PLAN-GREENSPPOINT
- 13-14. VALLEY GUTTER DETAILS
15. MISCELLANEOUS PAVING DETAILS
16. PLAN & PROFILE-SWS LINE NO. 1
17. PLAN & PROFILE-SWS LINE NO. 2
18. PLAN & PROFILE-SWS LINE NO. 3
19. STANDARD TYPE 1A CURB INLET DETAILS (L=5'-0")
20. STANDARD AREA INLET
21. R.C. MANHOLE DETAILS
22. MANHOLE FRAME AND COVER DETAILS
23. MISCELLANEOUS DRAINAGE DETAILS
- 24-27. EROSION CONTROL DETAILS
28. POND EXPANSION
29. FOUR CORNER LOT GRADING PLAN
30. SIGNING DETAILS
- 31-34. CROSS SECTIONS

CITY OF WICHITA, KANSAS

NEIL D. CABLE, P.E., CITY ENGINEER

STREET IMPROVEMENTS

RUTGERS/GREENSPPOINT/PARKDALE - FROM THE N.L. OF LOT 20, BLOCK 5, TO THE N.L. OF LOT 10, BLOCK 7
 RUTGERS COURT - SERVING LOTS 1 THRU 10, BLOCK 5
 RUTGERS COURT - SERVING LOTS 11 THRU 20, BLOCK 5
 GREENSPPOINT - FROM THE W.L. OF RUTGERS/GREENSPPOINT TO THE W.L. OF LOT 1, BLOCK 6
 SIDEWALK - ALONG THE WEST, SOUTH AND EAST SIDE OF RUTGERS/GREENSPPOINT/PARKDALE

EVERGREEN-PHASE 4

CITY OF WICHITA PROJECT NO. 472-83256
 OCA NO. 765756

BOOKED
9-29-03
MCS
C-254

PROJECT SURVEY CONTROL

- BM#4-1 - CHISELED "d" SET ON TOP OF CURB WEST SIDE OF PARKDALE 10 1/2' NORTH OF CURB INLET NEAR THE SE CORNER LOT 26, BLOCK 5, EVERGREEN
ELEV. = 165.80
- BM#4-2 - SET "T" POST 3' WEST OF PC NEAR THE SE CORNER LOT 34, BLOCK 5, EVERGREEN
ELEV. = 166.16
- BM#4-3 - SET CHISELED "d" ON NORTH TOP OF CURB, GREENSPPOINT, 8' WEST OF SW CORNER LOT 1, BLOCK 1, EVERGREEN
ELEV. = 167.64
- BM#4-4 - SET CHISELED "d" ON EAST TOP OF CURB, RUTGERS STREET 7 1/2' NORTH OF CURB INLET NEAR SW CORNER LOT 21, BLOCK 5, EVERGREEN
ELEV. = 165.64

GENERAL NOTES

UNDERGROUND UTILITY SERVICE LINES AND OVERHEAD UTILITY POLE LINES ARE TO BE ADJUSTED AS NECESSARY BY OTHERS PRIOR TO CONSTRUCTION UNLESS THE PLANS SPECIFICALLY CALL FOR THEIR ADJUSTMENT BY THE CONTRACTOR. EXISTING UTILITIES AND THEIR LOCATION, AS SHOWN ON THE PLANS, REPRESENT THE BEST INFORMATION OBTAINABLE FOR DESIGN. LOCATION INFORMATION HAS BEEN OBTAINED FROM THE VARIOUS UTILITY COMPANIES AND IS EITHER FROM COMPANY RECORD DRAWINGS OR COMPANY PROVIDED FIELD LOCATIONS. THE CONTRACTOR WILL BE REQUIRED TO WORK AROUND EXISTING UTILITIES WITHIN THE RIGHT-OF-WAY WHICH DO NOT CONFLICT WITH PROPOSED CONSTRUCTION.

TREES AND SHRUBS IN PUBLIC RIGHT-OF-WAY WHICH ARE IN DIRECT CONFLICT WITH PROPOSED NEW CONSTRUCTION SHALL BE REMOVED BY THE CONTRACTOR. OTHER TREES MAY BE REMOVED ONLY WITH THE ENGINEER'S APPROVAL. TREES AND SHRUBS WHICH ARE NOT IN DIRECT CONFLICT WITH PROPOSED NEW CONSTRUCTION SHALL BE SAVED AND PROTECTED FROM DAMAGE. TREE REMOVAL BY THE CONTRACTOR SHALL BE CONSIDERED PART OF THE BID ITEM "SITE CLEARING".

RUBBLE FROM THE REMOVAL OF MISCELLANEOUS STRUCTURES SHALL BE DISPOSED OF ON SITES TO BE PROVIDED BY THE CONTRACTOR AND APPROVED AS NOTED BELOW.

ALL DISPOSAL SITES MUST BE APPROVED BY THE KANSAS DEPARTMENT OF HEALTH AND ENVIRONMENT. MATERIAL EITHER STOCKPILED OR DISPOSED OFF IN A FLOOD PLAIN WOULD REQUIRE A KANSAS STATE BOARD OF AGRICULTURE PERMIT. ANY MATERIAL DUMPED IN WATERS OF THE UNITED STATES OR WETLANDS IS SUBJECT TO U.S. CORPS OF ENGINEERS PERMITTING REGULATIONS. ANY MATERIAL BURIED OR STOCKPILED BEYOND APPROVED CONSTRUCTION LIMITS WOULD REQUIRE ADDITIONAL ARCHEOLOGICAL INVESTIGATIONS UNLESS BURIED IN A PREVIOUSLY APPROVED BORROW LOCATION.

CONTRACTOR SHALL SATISFY HIMSELF OF SURFACE AND SUBSURFACE CONDITIONS PRIOR TO BIDDING.

TEMPORARY SURFACING MATERIAL (ROCK, ASPHALT, ETC.) MAY HAVE BEEN PLACED WITHIN STREET RIGHTS-OF-WAY FOR HAUL ROADS AND TEMPORARY ACCESS. CONTRACTOR SHALL FIELD VERIFY EXISTING CONDITIONS TO DETERMINE EXTENT, IF ANY, OF SUCH SURFACING. CONTRACTOR SHALL REMOVE SAID TEMPORARY SURFACING IN THE SAME MANNER AS NOTED ABOVE FOR RUBBLE. THIS REMOVAL SHALL BE SUBSIDIARY TO "EXCAVATION".

CONTRACTOR SHALL PROVIDE A MINIMUM FORTY-EIGHT (48) HOUR ADVANCE NOTICE (EXCLUDING WEEKENDS AND HOLIDAYS) PRIOR TO BEGINNING ANY EXCAVATION TO KANSAS ONE-CALL SYSTEM, A UTILITY LOCATION SERVICE, AT (316) 687-2470 TO REQUEST THE FOLLOWING UTILITY COMPANIES TO LOCATE ALL EXISTING LINES WITHIN THE PROJECT AREA: K.G.S. GAS, K.O.B.E. ELECTRIC, SOUTHWESTERN BELL TELEPHONE, MULTIMEDIA CABLEVISION, CITY OF WICHITA SEWER MAINTENANCE AND CITY OF WICHITA WATER DEPARTMENT.

THE CONTRACTOR SHALL BE RESPONSIBLE FOR PRESERVING PROPERTY IRONS. THE CONTRACTOR WILL BE REQUIRED TO RE-ESTABLISH ANY PROPERTY IRONS WHICH ARE DAMAGED OR DESTROYED BY HIS CONSTRUCTION OPERATIONS. SUCH IRONS SHALL BE RE-ESTABLISHED BY A LICENSED LAND SURVEYOR IN ACCORDANCE WITH STATE LAWS.

THE WATER DEPARTMENT SHALL FIELD LOCATE WATER VALVES ONE-TIME DURING CONSTRUCTION WHEN REQUESTED BY THE CONTRACTOR. IT SHALL BE THE CONTRACTOR'S RESPONSIBILITY TO PRESERVE SUCH FIELD LOCATIONS DURING THE CONSTRUCTION PROCESS. WATER VALVES, WATER VALVE BOXES OR FIRE HYDRANTS DAMAGED DURING CONSTRUCTION SHALL BE REPAIRED BY THE CONTRACTOR AT HIS OWN EXPENSE.

THE CONTRACTOR SHALL ADJUST WATER VALVE BOXES AS DIRECTED BY THE ENGINEER. THIS WORK TO BE SUBSIDIARY TO OTHER BID ITEMS.

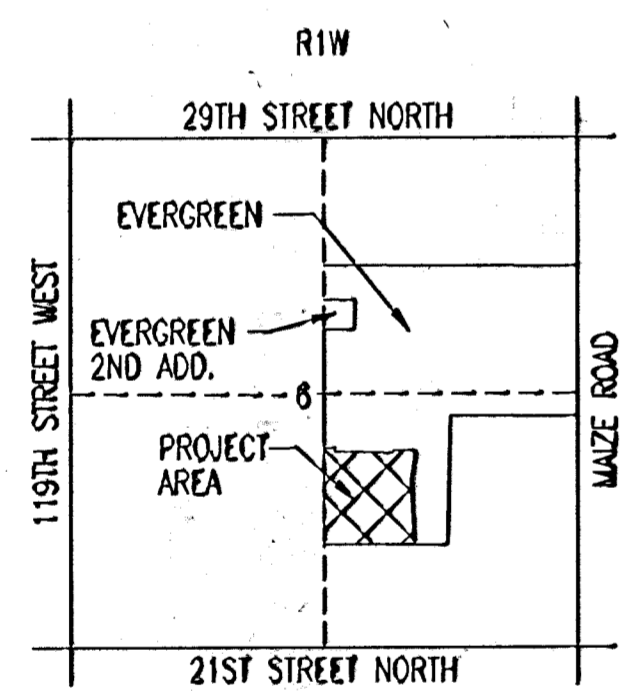
INLET HOOKUPS AND INLET SEDIMENT BARRIER SHALL BE BID PER EACH REGARDLESS OF INLET SIZE.

THIS PROJECT DOES NOT INCLUDE ANY PROVISIONS FOR CONSTRUCTION OF DRIVEWAYS.

THE CONTRACTOR SHALL APPLY TEMPORARY SEED AND MULCH TO ALL UNPAVED AREAS DISTURBED BY HIS CONSTRUCTION OPERATIONS IN ACCORDANCE WITH THE STANDARD SPECIFICATIONS. SEED SHALL BE ANNUAL RYE APPLIED AT THE RATE OF 4 LBS. PER 1,000 SQUARE FEET. MULCH SHALL BE PRAIRIE HAY APPLIED AT THE RATE OF 15 BALES PER ACRE. THIS WORK SHALL BE PAID FOR AT THE CONTRACT LUMP SUM PRICE BID FOR "TEMPORARY PROJECT SEEDING".

THE CONTRACTOR SHALL APPLY PERMANENT SEED, FERTILIZER, AND MULCH TO THE STREET RIGHT-OF-WAYS, UTILITY EASEMENTS AND THE DISTURBED PORTION OF RESERVE "A", IN ACCORDANCE WITH THE STANDARD SPECIFICATIONS. SEED SHALL BE K-31 FESCUE APPLIED AT THE RATE OF 350 LBS. PER ACRE. FERTILIZER SHALL BE 12-24-12 APPLIED AT THE RATE OF 350 LBS. PER ACRE. MULCH SHALL BE PRAIRIE HAY APPLIED AT THE RATE OF 15 BALES PER ACRE. THIS WORK SHALL BE PAID FOR AT THE CONTRACT PRICE BID PER ACRE FOR "PROJECT SEEDING".

EROSION CONTROL (BMP'S). THE CONTRACTOR SHALL INSTALL AND/OR MAINTAIN EROSION CONTROL METHODS AS SPECIFIED ON SHEET NO. 25. THE FOLLOWING QUANTITIES ARE ESTIMATED AND SHALL CONSIDERED THE MINIMUM EFFORT REQUIRED. INSTALLATION OF THESE BMP'S DOES NOT RELIEVE THE CONTRACTOR OF THE RESPONSIBILITY OF ABATING SOIL EROSION.



VICINITY MAP

EARTHWORK

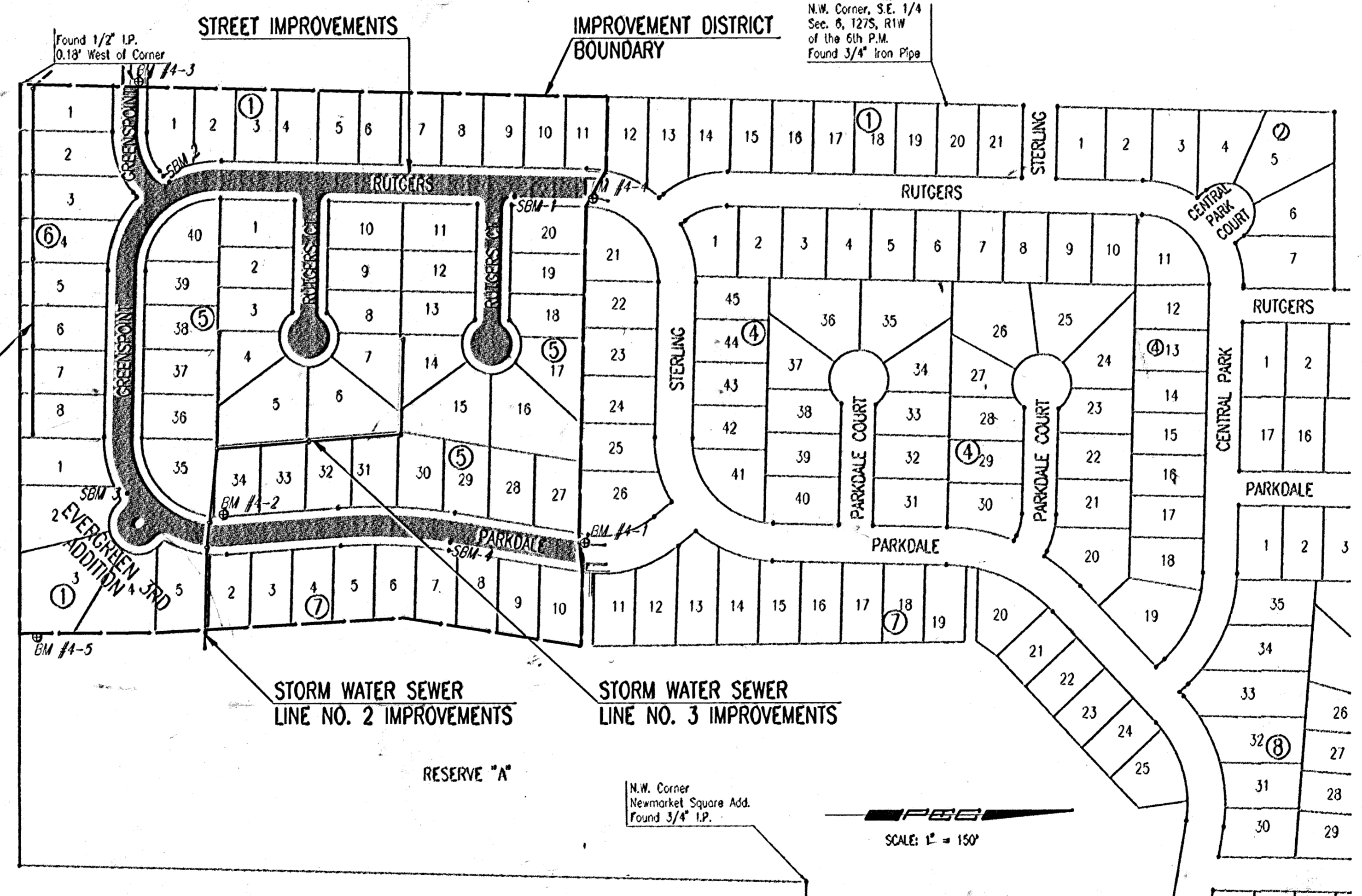
COMMON EXCAVATION	14,691 CU. YDS.
COMPACTED FILL	7,714 CU. YDS.
LOOSE FILL	34,808 CU. YDS.
CONTRACTOR FURNISHED BORROW	29,374 CU. YDS.

PROJECT LENGTH = 2807.18 LIN. FT.

NOTE:
Loose Fill has been adjusted by planimetric means to account for computational error associated with small radius curvature. This adjustment reduced the quantity computed from cross sections by 3,490 Cu. Yds.

SUBDIVISION BENCH MARKS (SBM)				
NO.	STREET AND STATION	FROM CL	DESCRIPTION	ELEVATION
1	RUTGERS, STA. 13+68.15	17' EAST	NORTH END RETURN, EAST SIDE STREET	----
2	RUTGERS, STA. 19+49.10	17' SOUTHWEST	NORTH END RETURN, SOUTHWEST SIDE STREET	----
3	GREENSPPOINT, STA. 24+68.13	17' SOUTHEAST	WEST END RETURN, SOUTHWEST SIDE STREET	----
4	PARKDALE, STA. 30+50.92	17' EAST	CURB P.T., EAST SIDE STREET	----

THE COST OF BENCH MARK DISC, INCLUDING INSTALLATION, SHALL BE INCIDENTAL TO THE CURB.



OCTOBER 2002

PLANS PREPARED BY
 PROFESSIONAL ENGINEERING CONSULTANTS, P.A.
 ENGINEERS
 WICHITA, KANSAS



2-2002/02387/strubk-dgn
Date Plotted: Oct. 31, 2002
Deliver to: Bill Searson