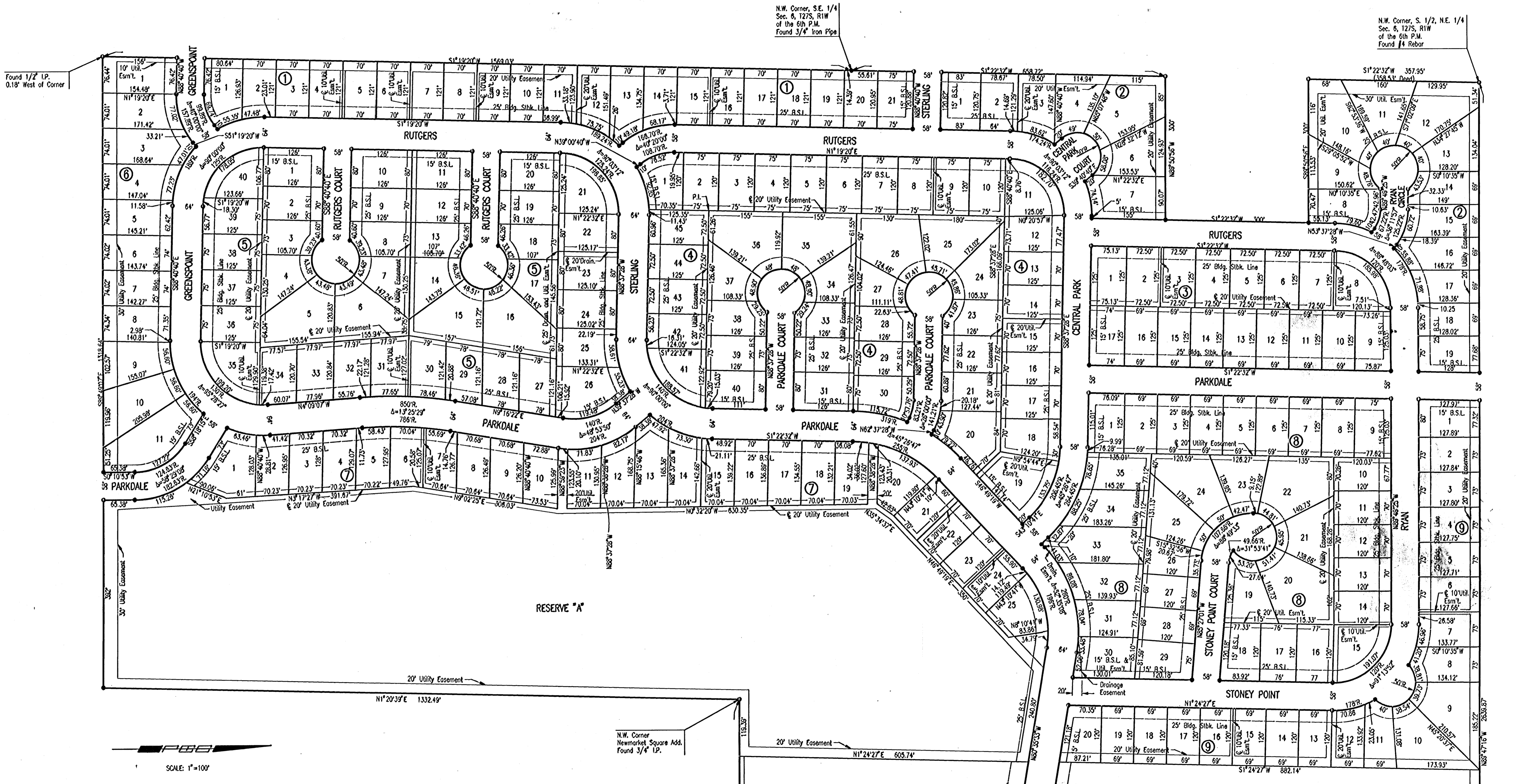


# EVERGREEN

AN ADDITION TO WICHITA, SEDGWICK COUNTY, KANSAS

PROJECT NO.	SHEET NO.	TOTAL SHEETS
472-83256	2	54



SCALE: 1"=100'

• = IRON SET

B.M.: CITY OF WICHITA STD. BENCH MARK DISC 6" EAST AND 99' SOUTH OF THE INTERSECTION OF THE CENTERLINES MAIZE ROAD AND 21ST STREET NORTH.

ELEV.=164.3 CITY DATUM  
ELEV.=1351.7 M.S.L.

ESTABLISHED MINIMUM PAD (LOWEST OPENING) AS FOLLOWS:  
LOIS 1 THROUGH 26, BLOCK 7, = 165.6 CITY DATUM = 1353.0 M.S.L.

EVERGREEN-PHASE 4  
CITY OF WICHITA, KANSAS

PLAT

**Professional Engineering Consultants, P.A.**  
303 S. TOPEKA • WICHITA, KANSAS 67202  
310-262-2691 • FAX 310-262-3003

Designed by	Checked by
Drawn by DEP	Date AUG. 2002
	Job No. 02397

2002/02397/plot.dgn  
Date Plotted: Oct. 31, 2002  
Deliver to: Bill Sexson