

# EVERGREEN 3RD

AN ADDITION TO WICHITA, SEDGWICK COUNTY, KANSAS

PROJECT NO.	SHEET NO.	TOTAL SHEETS
472-83256	3	54

SCALE: 1" = 50'

• = 3/4" IRON PIPE W/PEC CAP UNLESS OTHERWISE NOTED  
B.S.L. = BUILDING SETBACK LINE

**BENCH MARKS**

CITY OF WICHITA STD. BENCH MARK DISC 64" EAST AND 99" SOUTH OF THE INTERSECTION OF THE CENTERLINES MAIZE ROAD AND 21ST STREET NORTH.

ELEV.=164.3 CITY DATUM  
ELEV.=1351.7 N.G.V.D.

BM#4-2 - SET "I" POST 3" WEST OF PC NEAR THE SE CORNER LOT 34, BLOCK 5, EVERGREEN  
ELEV. = 166.16 CITY DATUM

STATE OF KANSAS }  
COUNTY OF SEDGWICK } SS

WE, PROFESSIONAL ENGINEERING CONSULTANTS, P.A., ENGINEERS AND SURVEYORS IN AFORESAID STATE AND COUNTY, DO HEREBY CERTIFY THAT OF THIS \_\_\_\_\_ DAY OF \_\_\_\_\_, 2002, WE HAVE SURVEYED AND PLATTED EVERGREEN 3RD, AN ADDITION TO WICHITA, SEDGWICK COUNTY, KANSAS, INTO LOTS AND A BLOCK, THE SAME BEING A REPLAT OF, AND DESCRIBED AS FOLLOWS:

BEGINNING AT THE SOUTHEAST CORNER OF LOT 8, BLOCK 8, EVERGREEN, AN ADDITION TO WICHITA, SEDGWICK COUNTY, KANSAS; THENCE BEARING S89°49'07"E ALONG THE SOUTH LINE OF SAID ADDITION A DISTANCE OF 331.77 FEET; THENCE BEARING N00°10'53"E A DISTANCE OF 65.38 FEET; THENCE BEARING N00°12'58"W A DISTANCE OF 162.60 FEET; THENCE BEARING N03°17'27"W A DISTANCE OF 90.29 FEET TO THE SOUTHEAST CORNER OF LOT 2, BLOCK 7 OF SAID ADDITION; THENCE BEARING N88°40'40"W ALONG THE SOUTH LINE OF SAID LOT 2, A DISTANCE OF 128.03 FEET TO A POINT ON A CURVE TO THE RIGHT, HAVING A RADIUS OF 194.00 FEET; THENCE CONTINUING ALONG SAID CURVE THROUGH A CENTRAL ANGLE OF 86°05'09", AN ARC DISTANCE OF 291.48 FEET TO THE NORTHEAST CORNER OF LOT 8, BLOCK 8 IN SAID ADDITION; THENCE BEARING S01°19'20"W ALONG THE EAST LINE OF SAID LOT 8, A DISTANCE OF 140.81 FEET TO THE POINT OF BEGINNING.

ALL PORTIONS OF LEGACY PARK WILSON ESTATES ADDITION TO WICHITA, SEDGWICK COUNTY, KANSAS, WITHIN THE ABOVE DESCRIBED TRACT OF LAND ARE HEREBY VACATED AND REPLATTED BY VIRTUE OF K.S.A. 12-512(b) AMENDED.

JAMES R. BECKETT, R.L.S. NO. 832  
PROFESSIONAL ENGINEERING CONSULTANTS, P.A.

KNOW ALL MEN BY THESE PRESENTS THAT WE, THE UNDERSIGNED PROPERTY OWNERS OF THE LAND AS ABOVE SET FORTH IN THE SURVEYOR'S CERTIFICATE, HAVE CAUSED THE LAND TO BE SURVEYED AND PLATTED INTO LOTS AND A BLOCK, THE SAME TO BE KNOWN AS EVERGREEN 3RD, AN ADDITION TO WICHITA, SEDGWICK COUNTY, KANSAS.

EASEMENTS FOR THE CONSTRUCTION AND MAINTENANCE OF PUBLIC UTILITIES ARE HEREBY GRANTED.

MINIMUM PAD ELEVATIONS (LOWEST OPENING) SHALL BE AS FOLLOWS:

#1-BLOCK 14U #UNGV0  
LOT 5 1353.0

A DRAINAGE PLAN HAS BEEN APPROVED FOR THIS PLAT. ALL DRAINAGE EASEMENTS AND RIGHTS-OF-WAY SHALL REMAIN AT ESTABLISHED GRADES AND UNOBSTRUCTED TO ALLOW FOR THE CONVEYANCE OF STORM WATER, UNLESS MODIFIED WITH THE APPROVAL OF THE CITY ENGINEER.

OWNER: SOCORA VILLAGE COMPANY

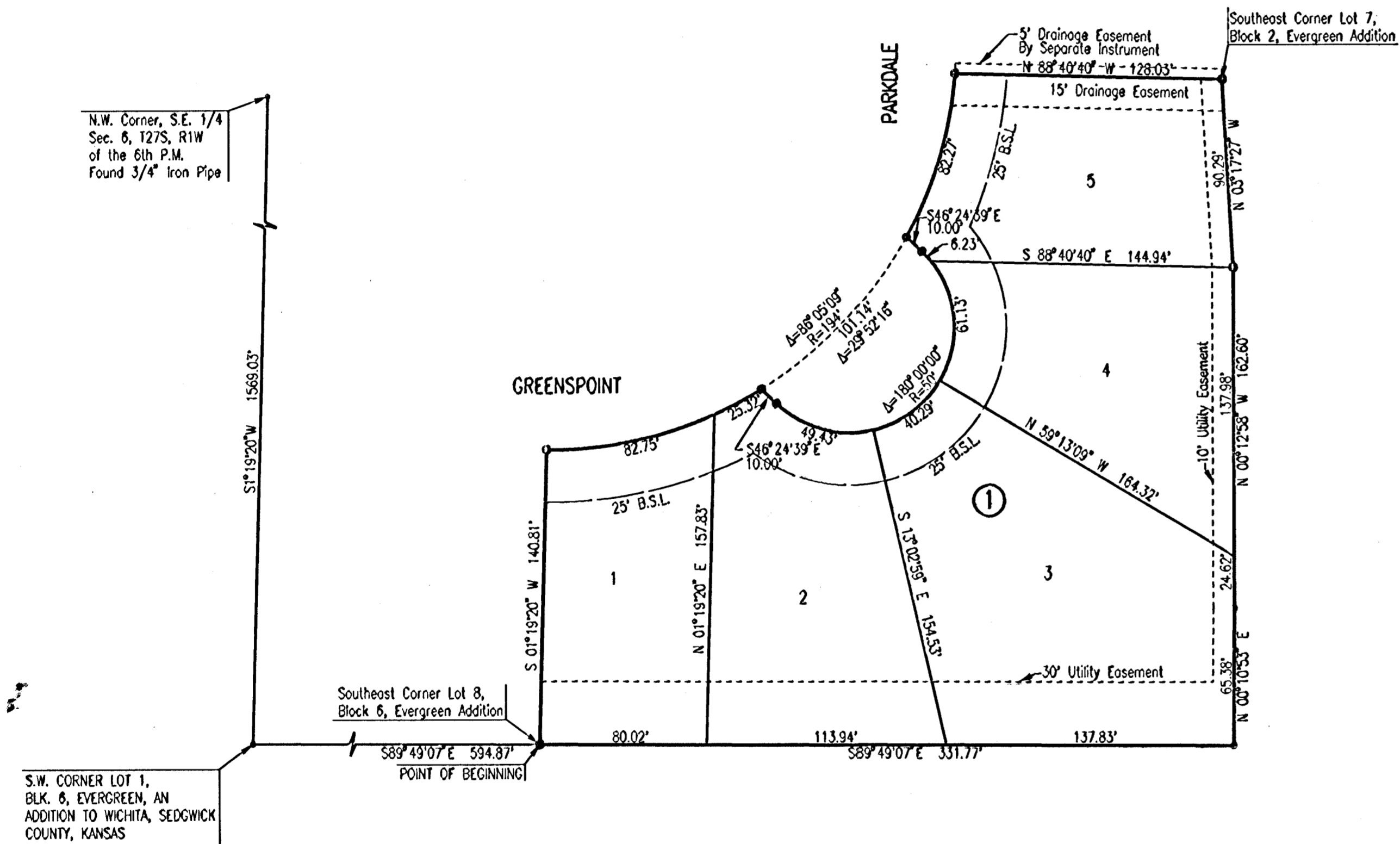
BY: LARRY A. CHAMBERS, PRESIDENT

STATE OF KANSAS }  
COUNTY OF SEDGWICK } SS

BE IT REMEMBERED ON THIS \_\_\_\_\_ DAY OF \_\_\_\_\_, 2002, BEFORE ME A NOTARY PUBLIC IN AFORESAID STATE AND COUNTY CAME LARRY A. CHAMBERS, PRESIDENT, SOCORA VILLAGE COMPANY, AND TO ME PERSONALLY KNOWN TO BE THE SAME PERSON WHO EXECUTED THE FOREGOING INSTRUMENT OF WRITING AND DULY ACKNOWLEDGED THE EXECUTION OF SAME FOR AND ON BEHALF OF AND AS THE ACT AND DEED OF SAID COMPANY IN TESTIMONY WHEREOF I HAVE HEREUNTO SET MY HAND AND AFFIXED MY NOTARIAL SEAL THE DAY AND YEAR ABOVE WRITTEN.

\_\_\_\_\_, NOTARY PUBLIC

MY APPOINTMENT EXPIRES: \_\_\_\_\_



WE, FIDELITY BANK IN WICHITA KANSAS, HOLDER OF A MORTGAGE ON THE ABOVE DESCRIBED PROPERTY, DO HEREBY CONSENT TO THE PLATTING OF EVERGREEN, AN ADDITION TO WICHITA, SEDGWICK COUNTY, KANSAS.

BY: T. STEVEN MATTINGLY, SENIOR VICE PRESIDENT

STATE OF KANSAS }  
COUNTY OF SEDGWICK } SS

BE IT REMEMBERED ON THIS \_\_\_\_\_ DAY OF \_\_\_\_\_, 2002, BEFORE ME A NOTARY PUBLIC IN AFORESAID STATE AND COUNTY CAME T. STEVEN MATTINGLY, SENIOR VICE PRESIDENT, FIDELITY BANK, AND TO ME PERSONALLY KNOWN TO BE THE SAME PERSON WHO EXECUTED THE FOREGOING INSTRUMENT OF WRITING AND DULY ACKNOWLEDGED THE EXECUTION OF SAME FOR AND ON BEHALF OF AND AS THE ACT AND DEED OF SAID BANK IN TESTIMONY WHEREOF I HAVE HEREUNTO SET MY HAND AND AFFIXED MY NOTARIAL SEAL THE DAY AND YEAR ABOVE WRITTEN.

\_\_\_\_\_, NOTARY PUBLIC

MY APPOINTMENT EXPIRES: \_\_\_\_\_

THIS PLAT OF EVERGREEN 3RD HAS BEEN SUBMITTED TO AND APPROVED BY THE WICHITA-SEDGWICK COUNTY METROPOLITAN AREA PLANNING COMMISSION, WICHITA, KANSAS.

DATED THIS \_\_\_\_\_ DAY OF \_\_\_\_\_, 2002.

WICHITA-SEDGWICK COUNTY METROPOLITAN AREA PLANNING COMMISSION

\_\_\_\_\_, CHAIR

\_\_\_\_\_, ACTING SECRETARY

REVIEWED IN ACCORDANCE WITH K.S.A. 58-2005 ON THIS \_\_\_\_\_ DAY OF \_\_\_\_\_, 2002.

TRICIA L. ROBELLO, LS #1246  
DEPUTY COUNTY SURVEYOR  
SEDGWICK COUNTY KANSAS

THIS PLAT IS APPROVED AND ALL DEDICATIONS SHOWN HEREON, IF ANY ARE ACCEPTED BY THE CITY COUNCIL OF THE CITY OF WICHITA, KANSAS, THIS \_\_\_\_\_ DAY OF \_\_\_\_\_, 2002.

AT THE DIRECTION OF THE CITY COUNCIL

\_\_\_\_\_, CITY MANAGER

\_\_\_\_\_, CITY CLERK

ENTERED ON TRANSFER RECORD THIS \_\_\_\_\_ DAY OF \_\_\_\_\_, 2002.

\_\_\_\_\_, COUNTY CLERK

THIS IS TO CERTIFY THAT THIS INSTRUMENT WAS FILED FOR RECORD IN THE REGISTER OF DEEDS OFFICE AT \_\_\_\_\_ M., ON THE \_\_\_\_\_ DAY OF \_\_\_\_\_, 2002.

\_\_\_\_\_, REGISTER OF DEEDS

\_\_\_\_\_, DEPUTY

No.		Revisions		By	Date
EVERGREEN-PHASE 4 CITY OF WICHITA, KANSAS					
PLAT					
<b>Professional Engineering Consultants, P.A.</b> 300 S. TOPEKA • WICHITA, KANSAS 67202 316-262-2691 • FAX 316-262-3003					
Designed by	Checked by				
Drawn by	Date		AUG. 2002		Job No. 02397

i: 2002/02/23/17/plat3rd.dgn  
 Date Platted: Oct. 31, 2002  
 Deliver to: Bill Seaton