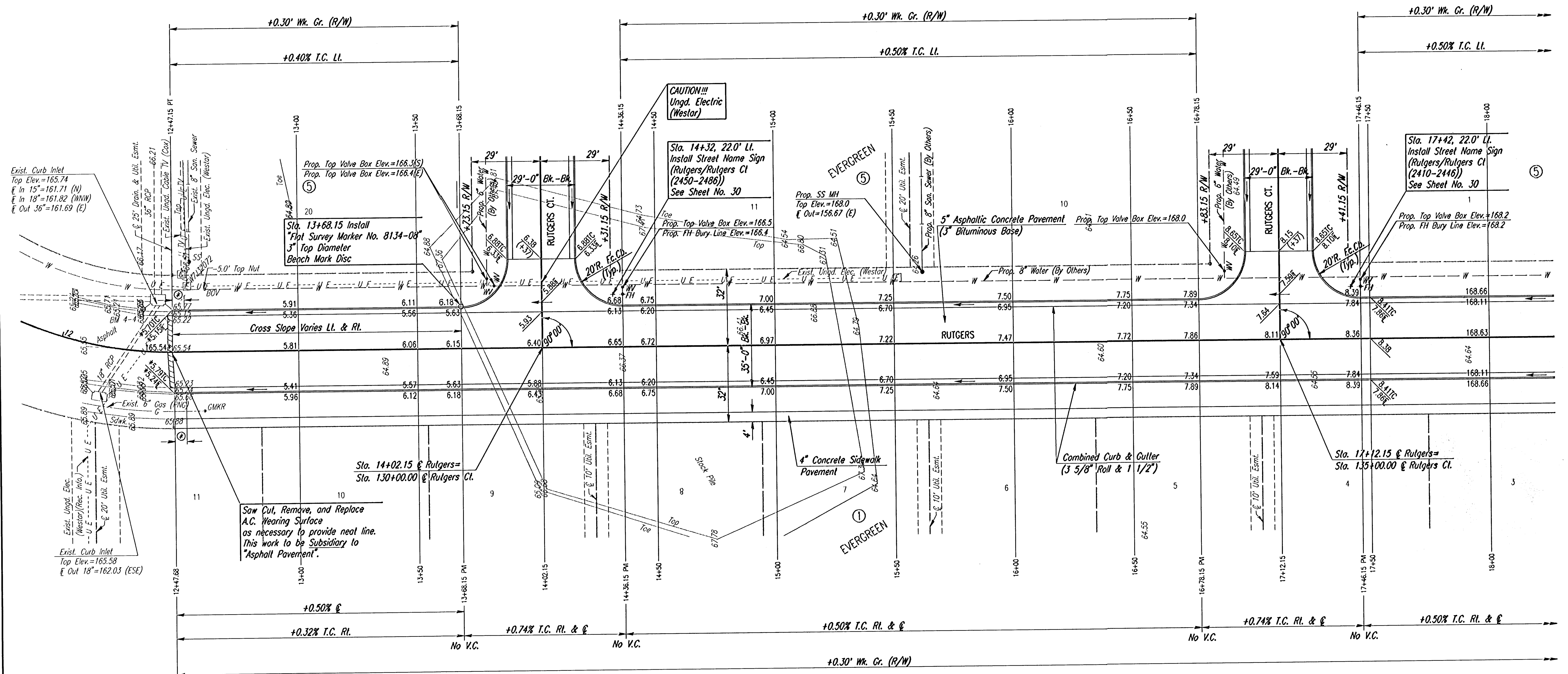


PROJECT NO.	472-83256	SHEET NO.	6	TOTAL SHEETS	54
-------------	-----------	-----------	---	--------------	----

WATER VALVE BOX ELEVATIONS			
STREET	STATION	OFFSET	PROPOSED ELEVATION
RUTGERS	13+79.15	29.0' LL	166.4
RUTGERS	13+82.15	26.0' LL	166.3
RUTGERS	14+36.15	25.0' LL	166.5
RUTGERS	16+89.15	29.0' LL	168.0
RUTGERS	17+46.15	25.0' LL	168.2

SCALE: 1"=20'



* MATCH EXISTING

② 5' TRANSITION FROM COMBINED CURB AND GUTTER (6 5/8" & 1 1/2") TO COMBINED CURB AND GUTTER (3 5/8" ROLL & 1 1/2"). TO BE BID AND PAID FOR AS "COMBINED CURB AND GUTTER (3 5/8" ROLL & 1 1/2)".

NOTE: THIS STREET TO BE CONSTRUCTED WITH ROLL-TYPE CURB. TOP OF CURB ELEVATIONS GIVEN ARE FOR FULL HEIGHT CURB.

I: 2002_02397_sri12-18.dgn
Date Plotted: Oct. 31, 2002
Deliver to: Bill Seaton

No.	Revisions	By	Date
EVERGREEN-PHASE 4 CITY OF WICHITA, KANSAS RUTGERS STA. 12+47.15 TO STA. 18+00			
Professional Engineering Consultants, P.A. <small>303 S. TOPEKA • WICHITA, KANSAS 67202 316-262-2691 • FAX 316-262-3003</small>			
Designed by	BER	Checked by	
Drawn by	BJS	Date	AUG. 2002
		Job No.	02397