

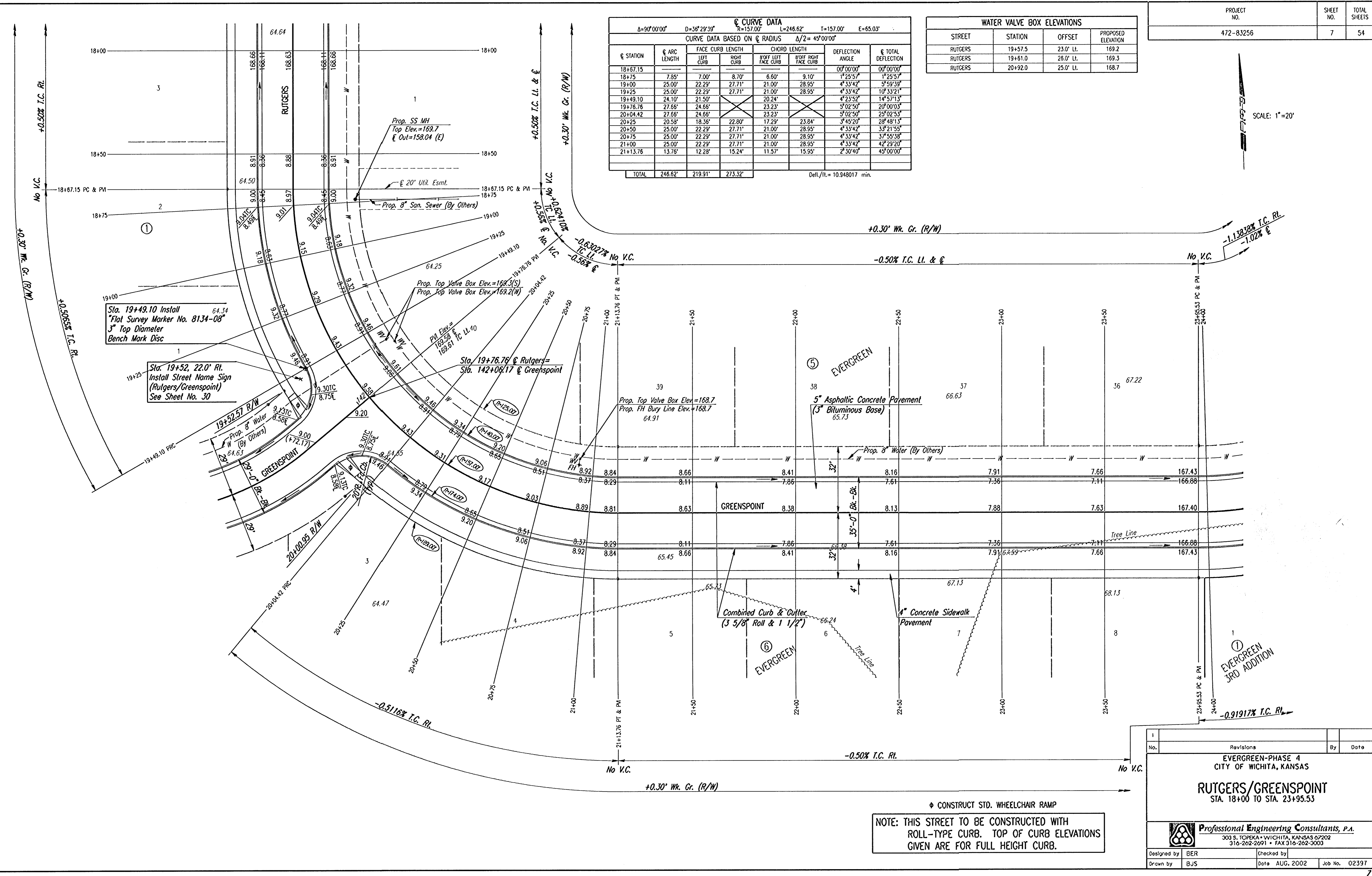
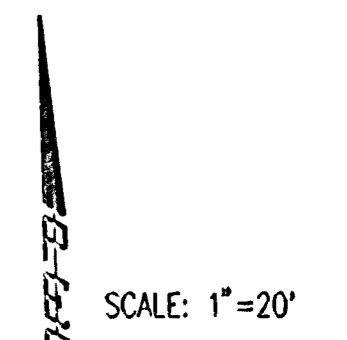
◊ CURVE DATA
 $\Delta=90^{\circ}00'00''$ $D=36^{\circ}29'39''$ $R=157.00'$ $L=246.62'$ $T=157.00'$ $E=65.03'$
 CURVE DATA BASED ON ◊ RADIUS $\Delta/2=45^{\circ}00'00''$

◊ STATION	◊ ARC LENGTH	FACE CURB LENGTH		CHORD LENGTH		DEFLECTION ANGLE	◊ TOTAL DEFLECTION
		LEFT CURB	RIGHT CURB	8" OFF LEFT FACE CURB	8" OFF RIGHT FACE CURB		
18+67.15						00°00'00"	00°00'00"
18+75	7.85'	7.00'	8.70'	6.60'	9.10'	1°25'57"	1°25'57"
19+00	25.00'	22.29'	27.71'	21.00'	28.95'	4°33'42"	5°59'39"
19+25	25.00'	22.29'	27.71'	21.00'	28.95'	4°33'42"	10°33'21"
19+49.10	24.10'	21.50'		20.24'		4°23'52"	14°57'13"
19+76.76	27.66'	24.66'		23.23'		5°02'50"	20°00'03"
20+04.42	27.66'	24.66'		23.23'		5°02'50"	25°02'53"
20+25	20.58'	18.36'	22.80'	17.29'	23.84'	3°45'20"	28°48'13"
20+50	25.00'	22.29'	27.71'	21.00'	28.95'	4°33'42"	33°21'55"
20+75	25.00'	22.29'	27.71'	21.00'	28.95'	4°33'42"	37°55'38"
21+00	25.00'	22.29'	27.71'	21.00'	28.95'	4°33'42"	42°29'20"
21+13.76	13.76'	12.28'	15.24'	11.57'	15.95'	2°30'40"	45°00'00"
TOTAL	246.62'	219.91'	273.32'				

Defl./ft. = 10.948017 min.

WATER VALVE BOX ELEVATIONS

STREET	STATION	OFFSET	PROPOSED ELEVATION
RUTGERS	19+57.5	23.0' LL	169.2
RUTGERS	19+61.0	26.0' LL	169.3
RUTGERS	20+92.0	25.0' LL	168.7



◊ CURVE DATA
 $\Delta=90^{\circ}00'00''$ $D=36^{\circ}29'39''$ $R=157.00'$ $L=246.62'$ $T=157.00'$ $E=65.03'$
 CURVE DATA BASED ON ◊ RADIUS $\Delta/2=45^{\circ}00'00''$

◊ STATION	◊ ARC LENGTH	FACE CURB LENGTH		CHORD LENGTH		DEFLECTION ANGLE	◊ TOTAL DEFLECTION
		LEFT CURB	RIGHT CURB	8" OFF LEFT FACE CURB	8" OFF RIGHT FACE CURB		
18+67.15						00°00'00"	00°00'00"
18+75	7.85'	7.00'	8.70'	6.60'	9.10'	1°25'57"	1°25'57"
19+00	25.00'	22.29'	27.71'	21.00'	28.95'	4°33'42"	5°59'39"
19+25	25.00'	22.29'	27.71'	21.00'	28.95'	4°33'42"	10°33'21"
19+49.10	24.10'	21.50'		20.24'		4°23'52"	14°57'13"
19+76.76	27.66'	24.66'		23.23'		5°02'50"	20°00'03"
20+04.42	27.66'	24.66'		23.23'		5°02'50"	25°02'53"
20+25	20.58'	18.36'	22.80'	17.29'	23.84'	3°45'20"	28°48'13"
20+50	25.00'	22.29'	27.71'	21.00'	28.95'	4°33'42"	33°21'55"
20+75	25.00'	22.29'	27.71'	21.00'	28.95'	4°33'42"	37°55'38"
21+00	25.00'	22.29'	27.71'	21.00'	28.95'	4°33'42"	42°29'20"
21+13.76	13.76'	12.28'	15.24'	11.57'	15.95'	2°30'40"	45°00'00"
TOTAL	246.62'	219.91'	273.32'				

Defl./ft. = 10.948017 min.

Sta. 19+49.10 Install Flat Survey Marker No. 8134-08 3" Top Diameter Bench Mark Disc

Sta. 19+52, 22.0' Rt. Install Street Name Sign (Rutgers/Greenspoint) See Sheet No. 30

Prop. SS MH Top Elev.=169.7 ◊ Out=158.04 (E)

◊ 20' Util. Esmt.

Prop. 8" San. Sewer (By Others)

Prop. Top Valve Box Elev.=169.3(S) Prop. Top Valve Box Elev.=169.2(W)

PM Elev.=169.58 ◊ T.C. LL=169.67

Sta. 19+76.76 ◊ Rutgers= Sta. 142+06.17 ◊ Greenspoint

Prop. Top Valve Box Elev.=168.7 Prop. FH Bury Line Elev.=168.7 64.91

5" Asphaltic Concrete Pavement (3" Bituminous Base) 65.73

Combined Curb & Gutter (3 5/8" Roll & 1 1/2")

4" Concrete Sidewalk Pavement

EVERGREEN 3RD ADDITION

I: 2002/02/23/17/str18-24.dgn
 Date Plotted: Nov 19, 2002
 Deliver To: Bill Sexson

◊ CONSTRUCT STD. WHEELCHAIR RAMP

NOTE: THIS STREET TO BE CONSTRUCTED WITH ROLL-TYPE CURB. TOP OF CURB ELEVATIONS GIVEN ARE FOR FULL HEIGHT CURB.

No.	Revisions	By	Date

EVERGREEN-PHASE 4
 CITY OF WICHITA, KANSAS

RUTGERS/GREENSPPOINT
 STA. 18+00 TO STA. 23+95.53

Professional Engineering Consultants, P.A.
 303 S. TOPEKA • WICHITA, KANSAS 67202
 316-262-2691 • FAX 316-262-3003

Designed by	BER	Checked by	
Drawn by	BJS	Date	AUG. 2002
		Job No.	02397