
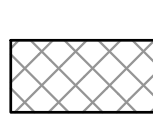
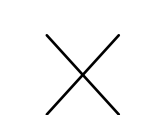


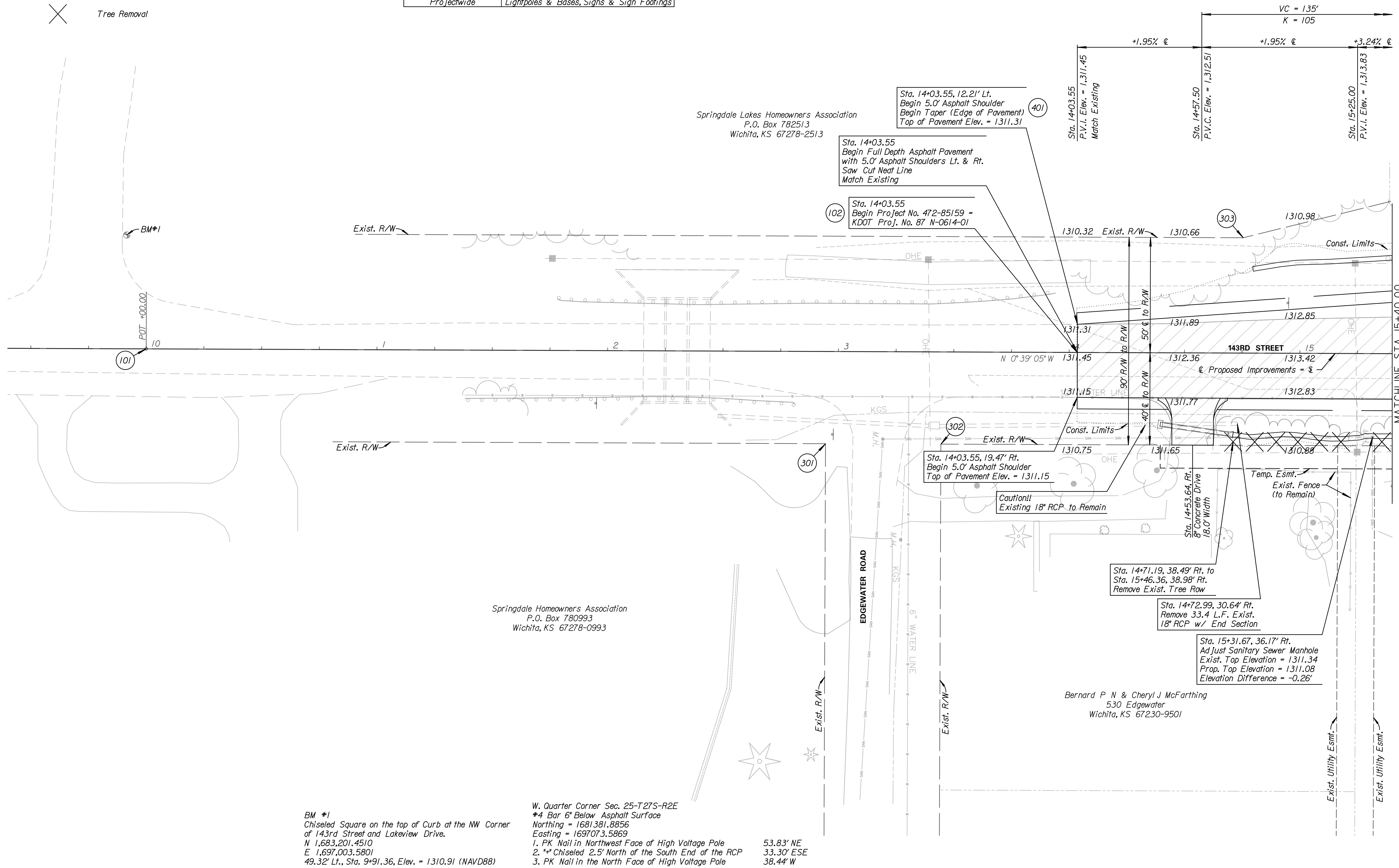
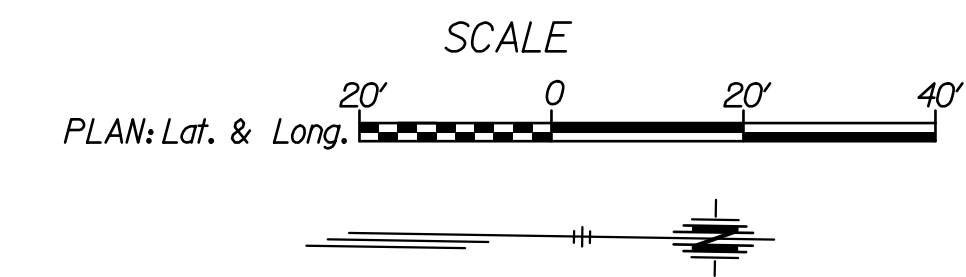
LEGEND

-  Pavement Removal
-  Sidewalk Removal
-  Tree Removal

Note:
For storm sewer plan & profile sheets
See Sheets 19-37

(XXX) For all control and coordinate data
See Sheet 3

REMOVAL OF EXISTING STRUCTURES (FOR INFORMATION ONLY)		
STATION	LOCATION	DESCRIPTION
14+72.99	Rt.	33.4 L.F. 18" RCP w/ 1 End Section
Projectwide		Lightpoles & Bases, Signs & Sign Footings



BM *1
Chiseled Square on the top of Curb at the NW Corner
of 143rd Street and Lakeview Drive.
N 1,683,201.4510
E 1,697,003.5801
49.32' Lt., Sta. 9+91.36, Elev. = 1310.91 (NAVD88)

W. Quarter Corner Sec. 25-T2TS-R2E
*4 Bar 6" Below Asphalt Surface
Northing = 1681381.8856
Easting = 1697073.5869
1. PK Nail in Northwest Face of High Voltage Pole 53.83' NE
2. *Chiseled 2.5' North of the South End of the RCP 33.30' ESE
3. PK Nail in the North Face of High Voltage Pole 38.44' W

Tran Systems
245 NORTH WACO
SUITE 222
WICHITA, KANSAS 67202
PHONE: 316-303-3000
FAX: 316-462-5629

CONSULTANTS:

143RD STREET IMPROVEMENTS
WICHITA, KANSAS
CITY OF WICHITA

REVISIONS:	DESCRIPTION	MARK	DATE

PROJ NO: 87 N-0614-01
SCALE: 1" = 20'
DATE: 5/26/2017
DESIGNED BY: TAU
DRAWN BY: TAU
CHECKED BY: MDB

SHEET TITLE:
**143RD STREET
PLAN & PROFILE
STA. 14+03.55 TO
STA. 15+40.00**

SHEET NO.
10
SHEET 10 OF 236