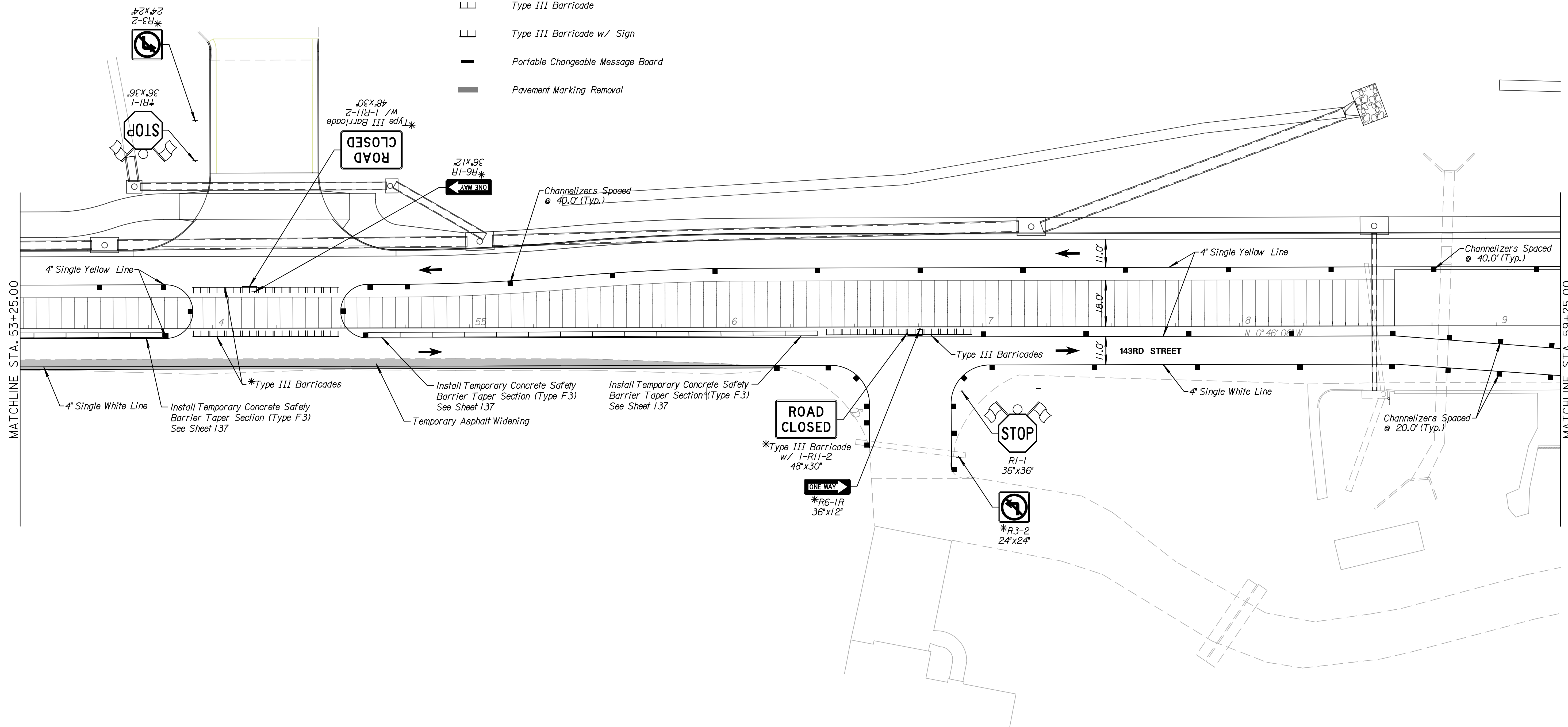
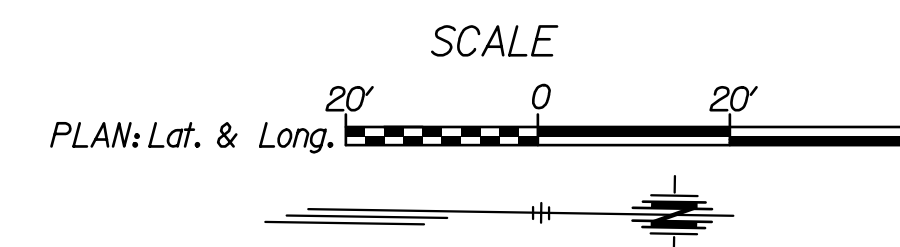


LEGEND

- Phase 3
- Temporary Asphalt Widening
- Single Post/Skid Mounted Sign
- Channelizer
- Tubular Marker (36")
- Type III Barricade
- Type III Barricade w/ Sign
- Portable Changeable Message Board
- Pavement Marking Removal

Note:
 *Type III Barricades and signs are to only be in place during construction through the private drive or side street
 †Signs to be placed only when private drive or side street is open
 The Baptist Church entrance and Siefkes Street shall not be constructed together. One (1) entrance shall be constructed prior the other entrance being closed.
 Concrete Safety Barrier shall be anchored according to KDOT Standard RD622b, See Sheet 138



Tran Systems
 245 NORTH WACO
 SUITE 222
 WICHITA, KANSAS 67202
 PHONE: 316-303-3000
 FAX: 316-462-5629

CONSULTANTS:

143RD STREET IMPROVEMENTS
 WICHITA, KANSAS

REVISIONS:	MARK	DATE	DESCRIPTION

PROJ NO: 87 N-0614-01
 SCALE: 1"=20'
 DATE: 5/26/2017
 DESIGNED BY: TAU
 DRAWN BY: TAU
 CHECKED BY: MDB

SHEET TITLE:
143RD STREET IMPROVEMENTS TRAFFIC CONTROL PHASE 3

SHEET NO.
100

SHEET 100 OF 236

taumtel 5/26/2017 11:12:59 AM c:\transtransystems\paw_bocalltransystems\paw_bocall\taumtel\0228400C-CPP-M01-607.dgn