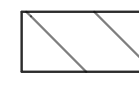




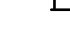


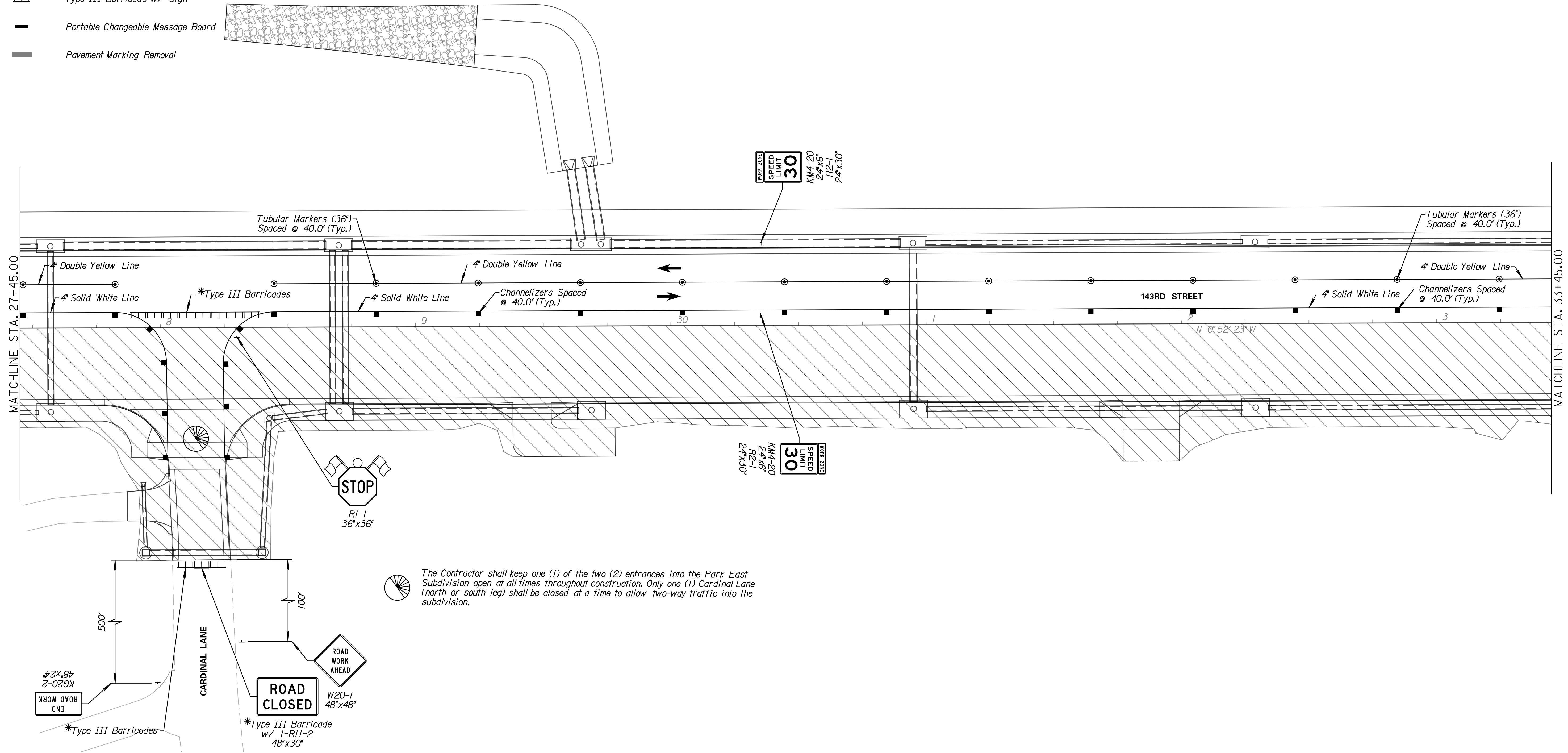
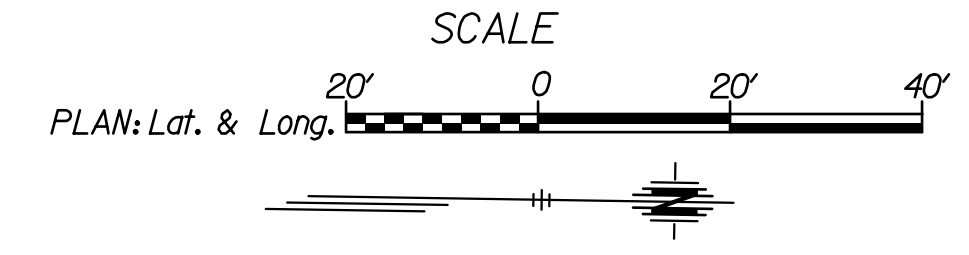


LEGEND

-  Phase 4
-  Single Post/Skid Mounted Sign
-  Channelizer
-  Tubular Marker (36")
-  Type III Barricade
-  Type III Barricade w/ Sign
-  Portable Changeable Message Board
-  Pavement Marking Removal

Note:  
 \*Type III Barricades and signs are to only be in place during construction through the private drive or side street



The Contractor shall keep one (1) of the two (2) entrances into the Park East Subdivision open at all times throughout construction. Only one (1) Cardinal Lane (north or south leg) shall be closed at a time to allow two-way traffic into the subdivision.

**Tran Systems**  
 245 NORTH WACO  
 SUITE 222  
 WICHITA, KANSAS 67202  
 PHONE: 316-303-3000  
 FAX: 316-462-5629

CONSULTANTS:

**143RD STREET IMPROVEMENTS**  
 WICHITA, KANSAS  


REVISIONS:	MARK	DATE	DESCRIPTION

PROJ NO: 87 N-0614-01  
 SCALE: 1"=20'  
 DATE: 5/26/2017  
 DESIGNED BY: TAU  
 DRAWN BY: TAU  
 CHECKED BY: MDB

SHEET TITLE:  
**143RD STREET IMPROVEMENTS TRAFFIC CONTROL PHASE 4**

SHEET NO.  
**106**

taumdel 5/26/2017 11:13:51 AM c:\tran\systems\work\local\tran\systems\pwr\taumdel\0228400C-CPP-M01-204.DGN