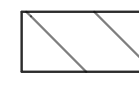




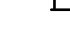


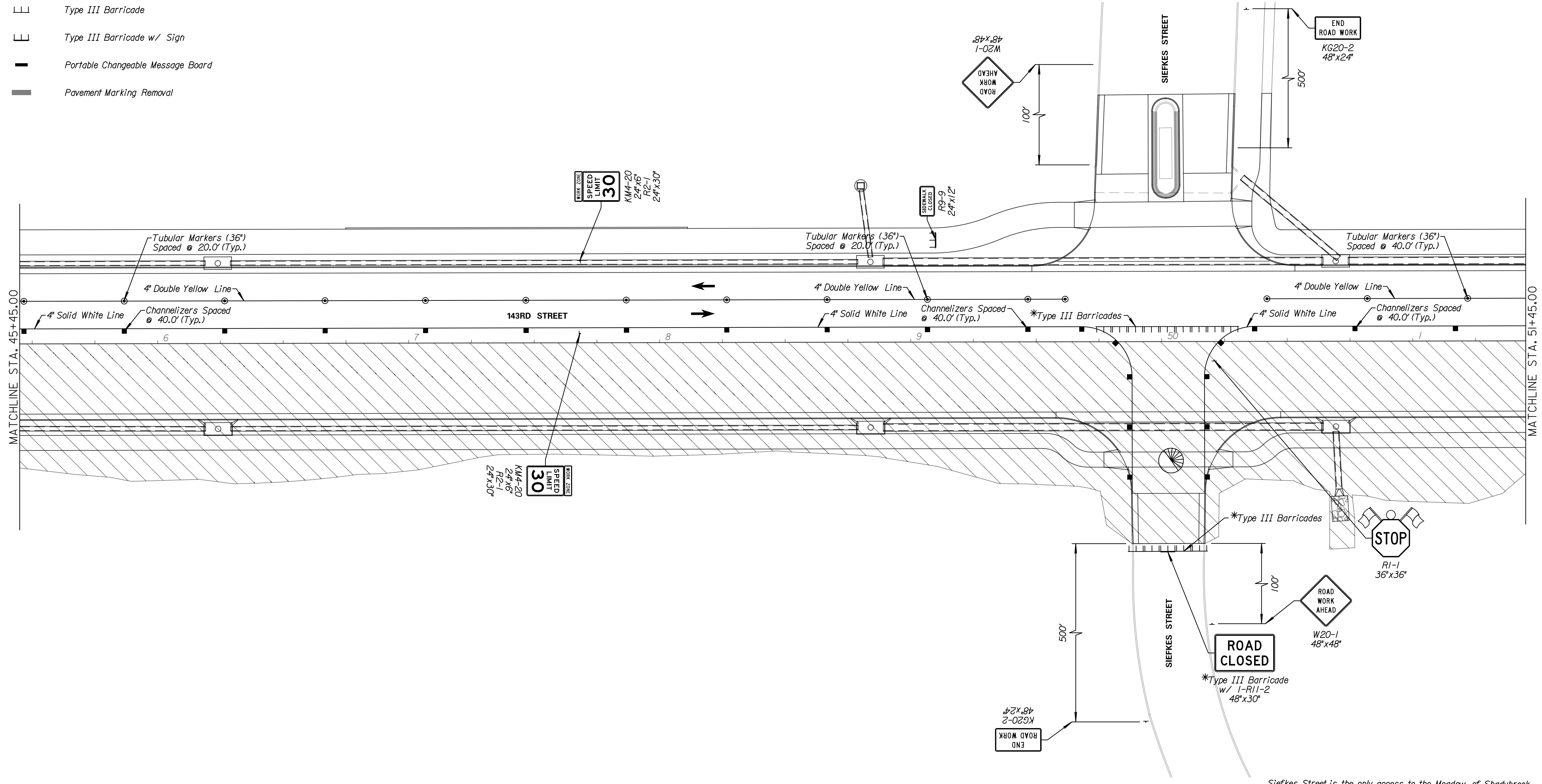
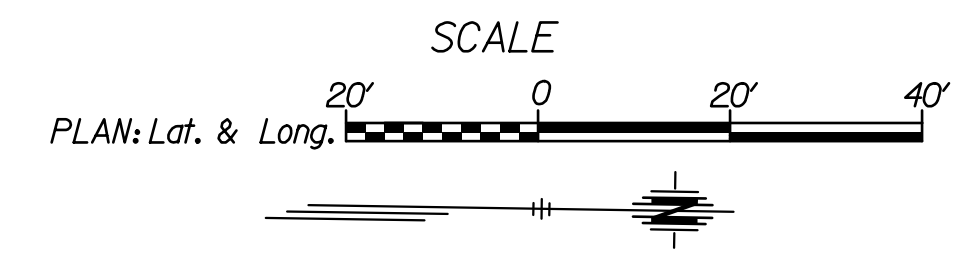


LEGEND

-  Phase 4
-  Single Post/Skid Mounted Sign
-  Channelizer
-  Tubular Marker (36")
-  Type III Barricade
-  Type III Barricade w/ Sign
-  Portable Changeable Message Board
-  Pavement Marking Removal

Note:  
 \*Type III Barricades and signs are to only be in place during construction through the private drive or side street



Siefkes Street is the only access to the Meadow of Shadybrook subdivision. The entrance shall remain open at all times throughout construction. The entrance shall be constructed half a time to allow traffic into and out of the subdivision.

**Tran Systems**  
 245 NORTH WACO  
 SUITE 222  
 WICHITA, KANSAS 67202  
 PHONE: 316-303-3000  
 FAX: 316-462-5629

CONSULTANTS:

143RD STREET IMPROVEMENTS  
 WICHITA, KANSAS  


| REVISIONS: | MARK | DATE | DESCRIPTION |
|------------|------|------|-------------|
|            |      |      |             |
|            |      |      |             |
|            |      |      |             |

PROJ NO: 87 N-0614-01  
 SCALE: 1"=20'  
 DATE: 5/26/2017  
 DESIGNED BY: TAU  
 DRAWN BY: TAU  
 CHECKED BY: MDB

SHEET TITLE:  
**143RD STREET IMPROVEMENTS  
 TRAFFIC CONTROL  
 PHASE 4**

SHEET NO.  
**109**  
 SHEET 109 OF 236