

CONSULTANTS:

143RD STREET IMPROVEMENTS



REVISIONS:	MARK	DATE	DESCRIPTION

PROJ NO: 87 N-0614-01
 SCALE: 1"=20'
 DATE: 5/26/2017
 DESIGNED BY: TAU
 DRAWN BY: TAU
 CHECKED BY: MDB

SHEET TITLE:
**143RD STREET IMPROVEMENTS
 TRAFFIC CONTROL
 PHASE 4**

SHEET NO.
114
 SHEET 114 OF 236

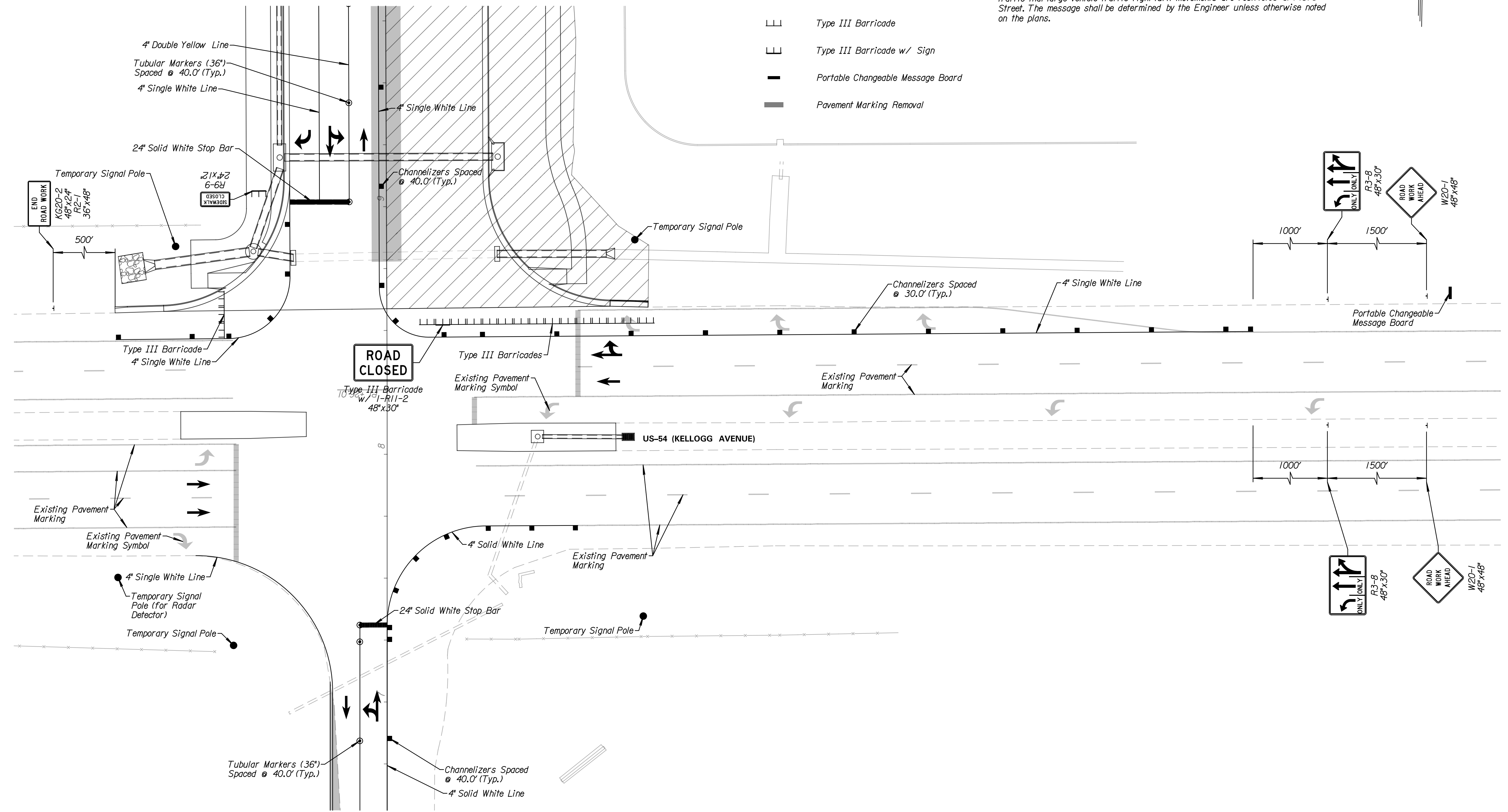
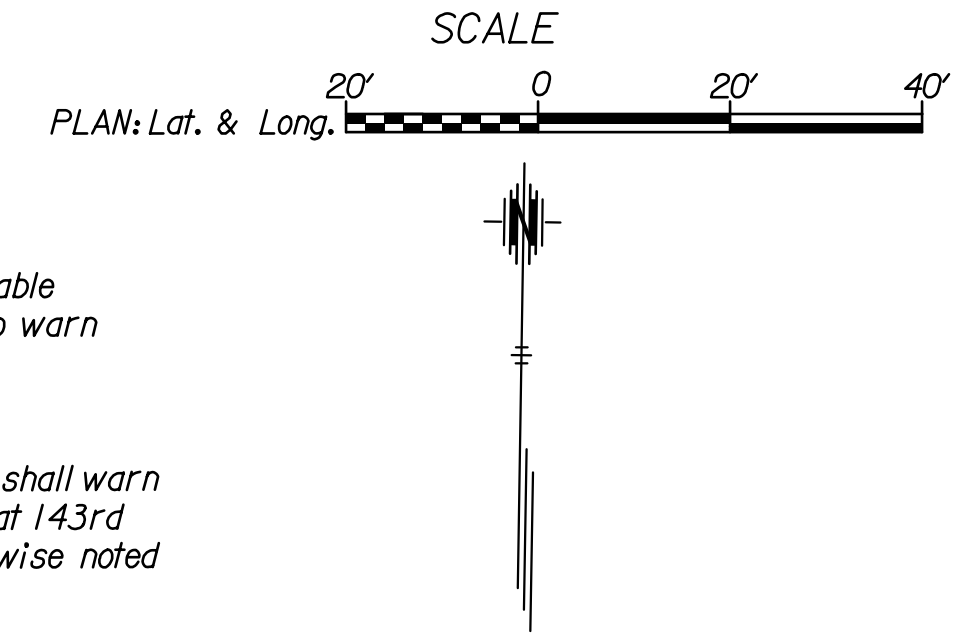
- LEGEND**
- Phase 4
 - Single Post/Skid Mounted Sign
 - Channelizer
 - Tubular Marker (36")
 - Type III Barricade
 - Type III Barricade w/ Sign
 - Portable Changeable Message Board
 - Pavement Marking Removal

Note:
 For traffic control on 143rd Street, See Sheets 103-114

For the temporary traffic signal layout and details for Phase 4 See Sheets 126 & 129

One (1) week prior to construction, the Contractor shall position a portable changeable message board at a location determined by the Engineer to warn travellers that the right turn lane shall be closed and large vehicle right turn movements shall be restricted during construction.

When construction commences the portable changeable message board shall warn traffic that large vehicle traffic right turn movements are restricted at 143rd Street. The message shall be determined by the Engineer unless otherwise noted on the plans.



5/26/2017 11:14:33 AM c:\tran\systems\paw_ba\tran\systems\paw_ba\ummed\0228400C-CPP-M01-213.DGN