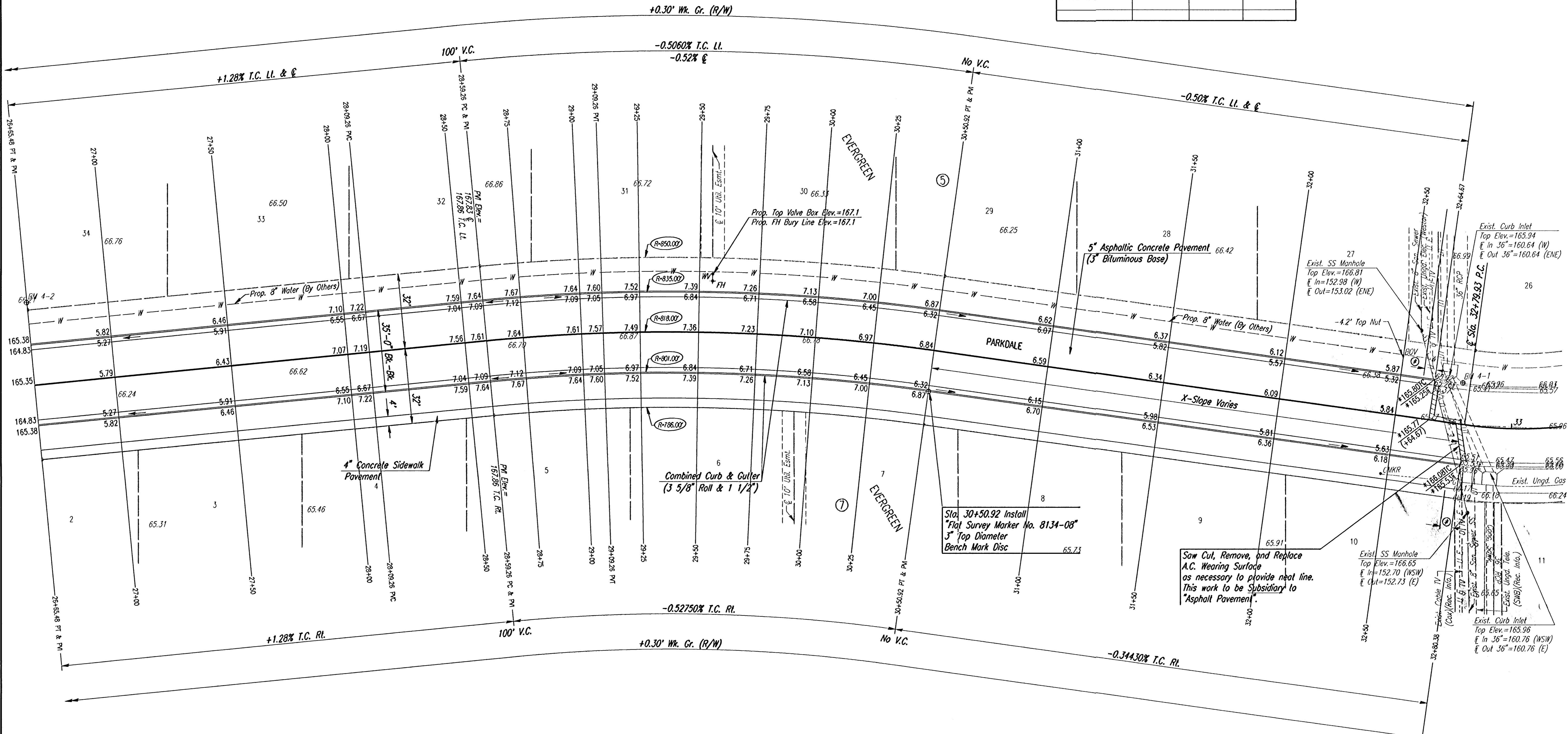


WATER VALVE BOX ELEVATIONS			
STREET	STATION	OFFSET	PROPOSED ELEVATION
PARKDALE	29+55.5	25.0' LI.	167.1

PROJECT NO.	472-83256	SHEET NO.	9	TOTAL SHEETS	54
-------------	-----------	-----------	---	--------------	----



**Q CURVE DATA**  
 $\Delta=13^{\circ}25'29''$   $D=7^{\circ}00'18''$   $R=818.00'$   $L=191.66'$   $T=98.27'$   $E=5.65'$   
 CURVE DATA BASED ON Q RADIUS  $\Delta/2=6^{\circ}42'44.5''$

Q STATION	Q ARC LENGTH	FACE CURB LENGTH		CHORD LENGTH		DEFLECTION ANGLE	Q TOTAL DEFLECTION
		LEFT CURB	RIGHT CURB	BOFF LEFT FACE CURB	BOFF RIGHT FACE CURB		
28+59.26						00°00'00"	00°00'00"
28+75	15.74'	16.07'	15.41'	16.23'	15.26'	0°33'04"	0°33'04"
29+00	25.00'	25.52'	24.48'	25.78'	24.23'	0°52'32"	1°25'36"
29+25	25.00'	25.52'	24.48'	25.78'	24.23'	0°52'32"	2°18'08"
29+50	25.00'	25.52'	24.48'	25.78'	24.23'	0°52'32"	3°10'40"
29+75	25.00'	25.52'	24.48'	25.78'	24.23'	0°52'32"	4°03'12"
30+00	25.00'	25.52'	24.48'	25.78'	24.23'	0°52'32"	4°55'44"
30+25	25.00'	25.52'	24.48'	25.78'	24.23'	0°52'32"	5°48'16"
30+50.92	25.92'	26.46'	25.38'	26.71'	25.13'	0°54'28"	6°42'44.5"
TOTAL	191.66'	195.65'	187.67'				

Defl./ft. = 2.101334 min.

NOTE: PORTION OF THIS STREET TO BE CONSTRUCTED WITH ROLL-TYPE CURB. TOP OF CURB ELEVATIONS GIVEN ARE FOR FULL HEIGHT CURB.

\* MATCH EXISTING  
 (5) 5' TRANSITION FROM COMBINED CURB AND GUTTER (6 5/8" & 1 1/2") TO COMBINED CURB AND GUTTER (3 5/8" ROLL & 1 1/2"). TO BE BID AND PAID FOR AS "COMBINED CURB AND GUTTER (3 5/8" ROLL & 1 1/2)".

I: 2002.02397/str27-33.dgn  
 Date Plotted: Oct. 31, 2002  
 Deliver To: Bill Seaton

No.	Revisions	By	Date
<b>EVERGREEN-PHASE 4</b> CITY OF WICHITA, KANSAS  <b>PARKDALE</b> STA. 26+65.48 TO STA. 32+80.38			
<b>Professional Engineering Consultants, P.A.</b> 303 S. TOPEKA • WICHITA, KANSAS 67202 316-262-2691 • FAX 316-262-3003			
Designed by	BER	Checked by	
Drawn by	BJS	Date	AUG. 2002
		Job No.	02397