







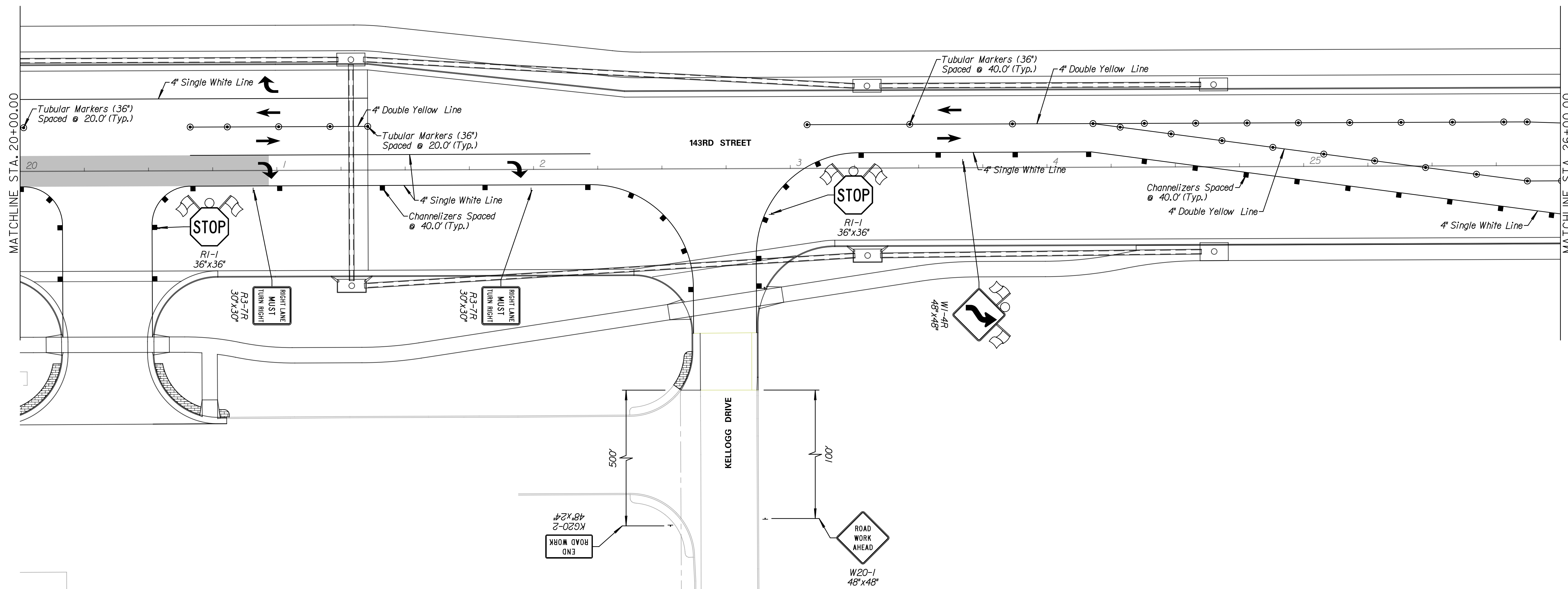
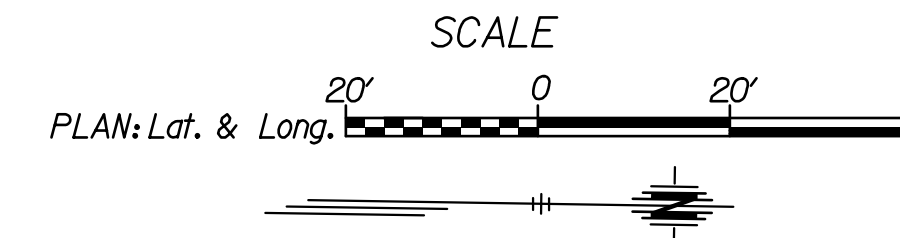


LEGEND

-  Phase 5
-  Single Post/Skid Mounted Sign
-  Channelizer
-  Tubular Marker (36")
-  Type III Barricade
-  Type III Barricade w/ Sign
-  Portable Changeable Message Board
-  Pavement Marking Removal

Note:  
 KI-104a & KI-105a shall be placed in the appropriate positions. See Sheet 133 (TE 710) for more details.



**Tran Systems**  
 245 NORTH WACO  
 SUITE 222  
 WICHITA, KANSAS 67202  
 PHONE: 316-303-3000  
 FAX: 316-462-5629

CONSULTANTS:

**143RD STREET IMPROVEMENTS**  
 WICHITA, KANSAS  


REVISIONS:	MARK	DATE	DESCRIPTION

PROJ NO: 87 N-0614-01  
 SCALE: 1"=20'  
 DATE: 5/26/2017  
 DESIGNED BY: TAU  
 DRAWN BY: TAU  
 CHECKED BY: MDB

**SHEET TITLE:**  
 143RD STREET IMPROVEMENTS  
 TRAFFIC CONTROL  
 PHASE 5

SHEET NO.  
 117  
 SHEET 117 OF 236

5/26/2017 11:14:52 AM c:\tran\systems\paw\_b\all\transys\paw\_b\taum\m\101b.dgn