

LEGEND

- Phase 6
- Single Post/Skid Mounted Sign
- Channelizer
- Tubular Marker (36")
- Type III Barricade
- Type III Barricade w/ Sign
- Portable Changeable Message Board
- Pavement Marking Removal

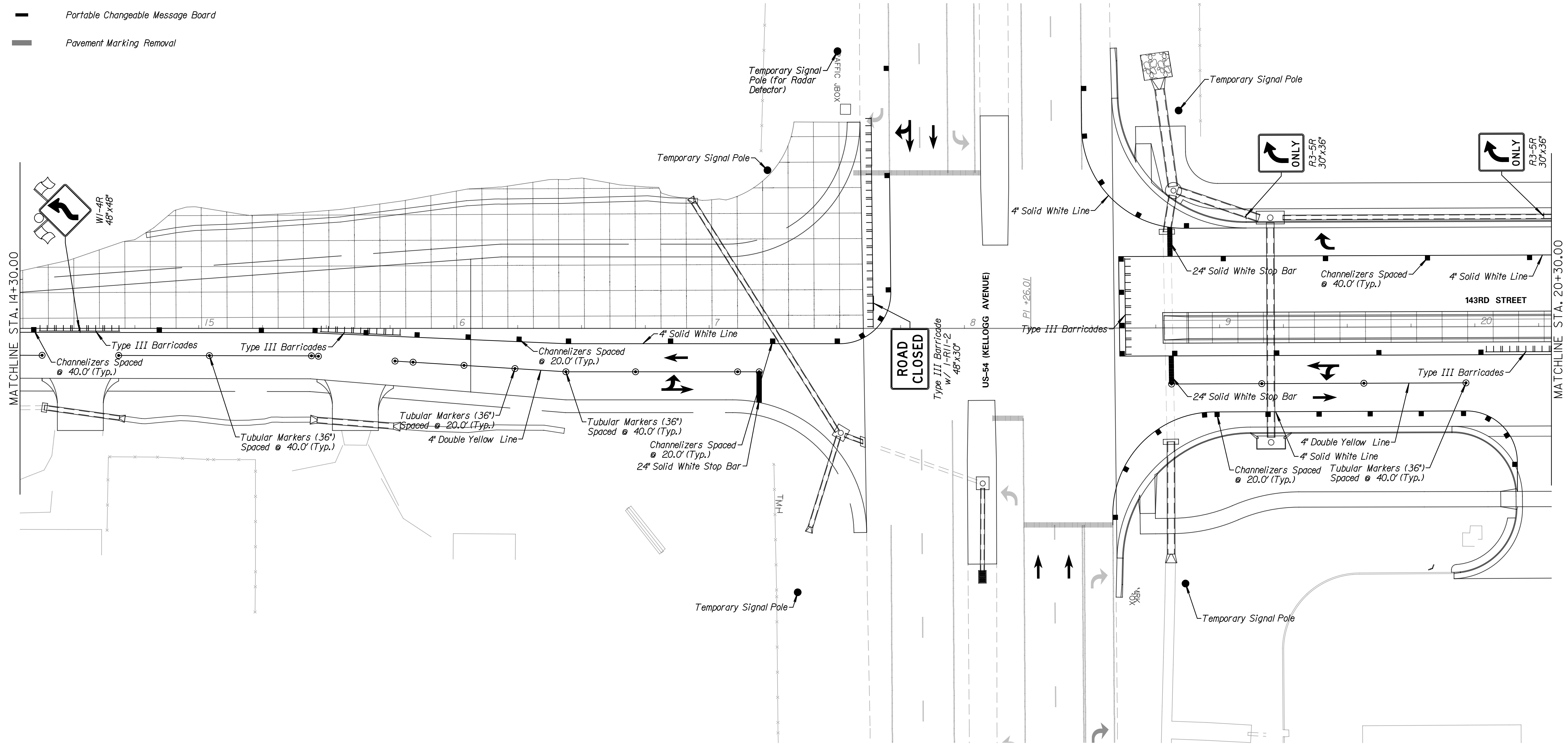
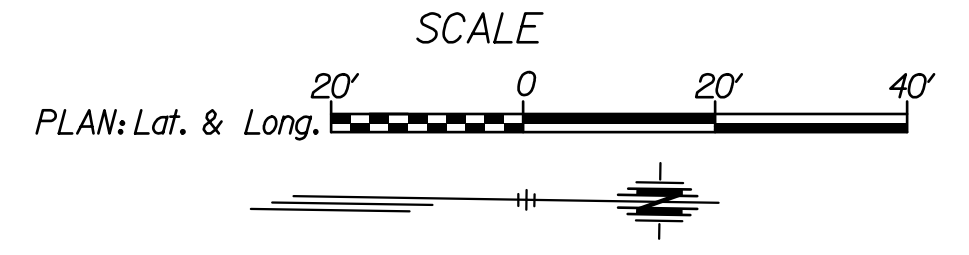
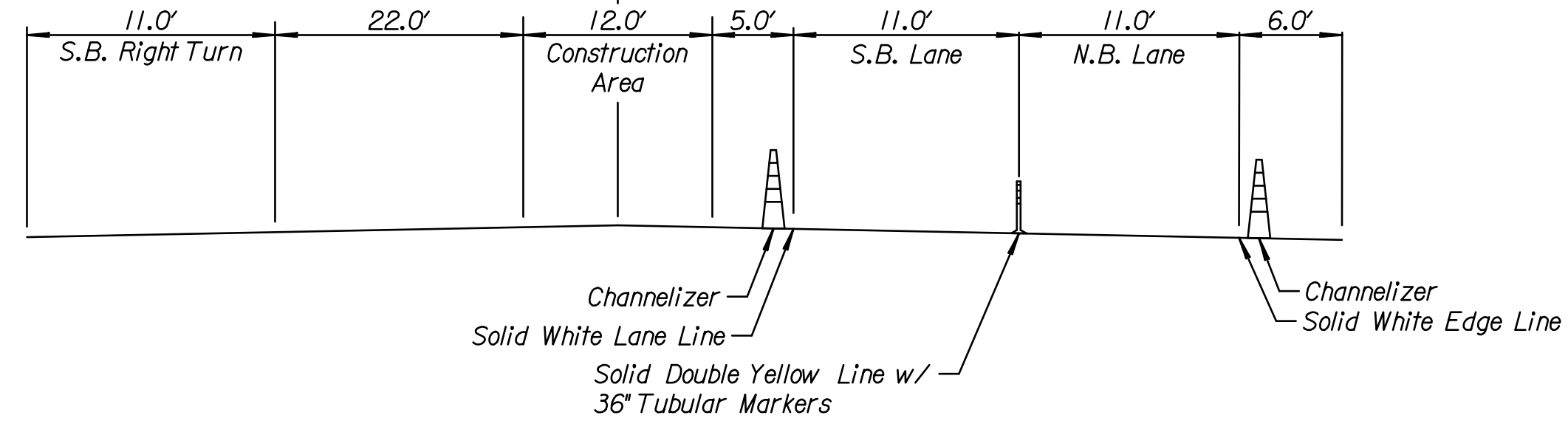
Note:  
 KI-104a & KI-105a shall be placed in the appropriate positions. See Sheet I.33 (TE 710) for more details.

The Contractor is responsible for the flagging operations during the paving process to tie into the existing pavement. Lane widths will be reduced for the paving equipment and personnel. Once paving has been completed at the tie in, the Contractor shall reestablish the lane widths.

For the temporary traffic signal layout and details for Phase 6, See Sheets I.28 & I.29

For traffic control on US-54 (Kellogg Avenue), See Sheet I.23

Typical Section Phase 6  
 North of US-54 (Kellogg Avenue)



**Tran Systems**  
 245 NORTH WACO  
 SUITE 222  
 WICHITA, KANSAS 67202  
 PHONE: 316-303-3000  
 FAX: 316-462-5629

CONSULTANTS:

143RD STREET IMPROVEMENTS

WICHITA, KANSAS

REVISIONS:	MARK	DATE	DESCRIPTION

PROJ NO: 87 N-0614-01  
 SCALE: 1"=20'  
 DATE: 5/26/2017  
 DESIGNED BY: TAU  
 DRAWN BY: TAU  
 CHECKED BY: MDB

SHEET TITLE:  
**143RD STREET IMPROVEMENTS  
 TRAFFIC CONTROL  
 PHASE 6**

SHEET NO.  
**120**

SHEET 120 OF 236

5/26/2017 11:15:11 AM c:\transtransystems\paw\_bocall\transtransystems\paw\taummet\228400C-CPP-M01-201a.DGN