

CONSULTANTS:

143RD STREET IMPROVEMENTS

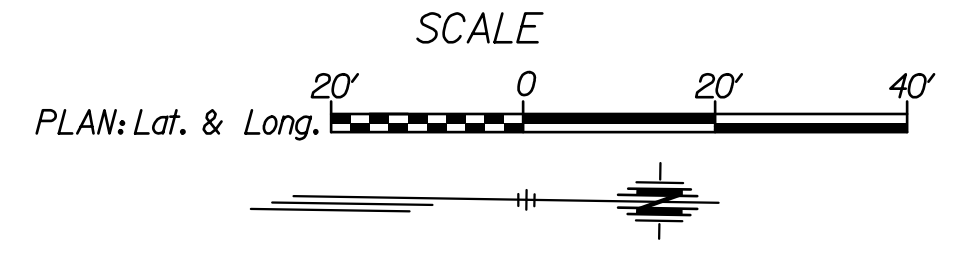


REVISIONS:	MARK	DATE	DESCRIPTION

PROJ NO: 87 N-0614-01
 SCALE: 1"=20'
 DATE: 5/26/2017
 DESIGNED BY: TAU
 DRAWN BY: TAU
 CHECKED BY: MDB

SHEET TITLE:
**143RD STREET IMPROVEMENTS
 TRAFFIC CONTROL
 PHASE 6**

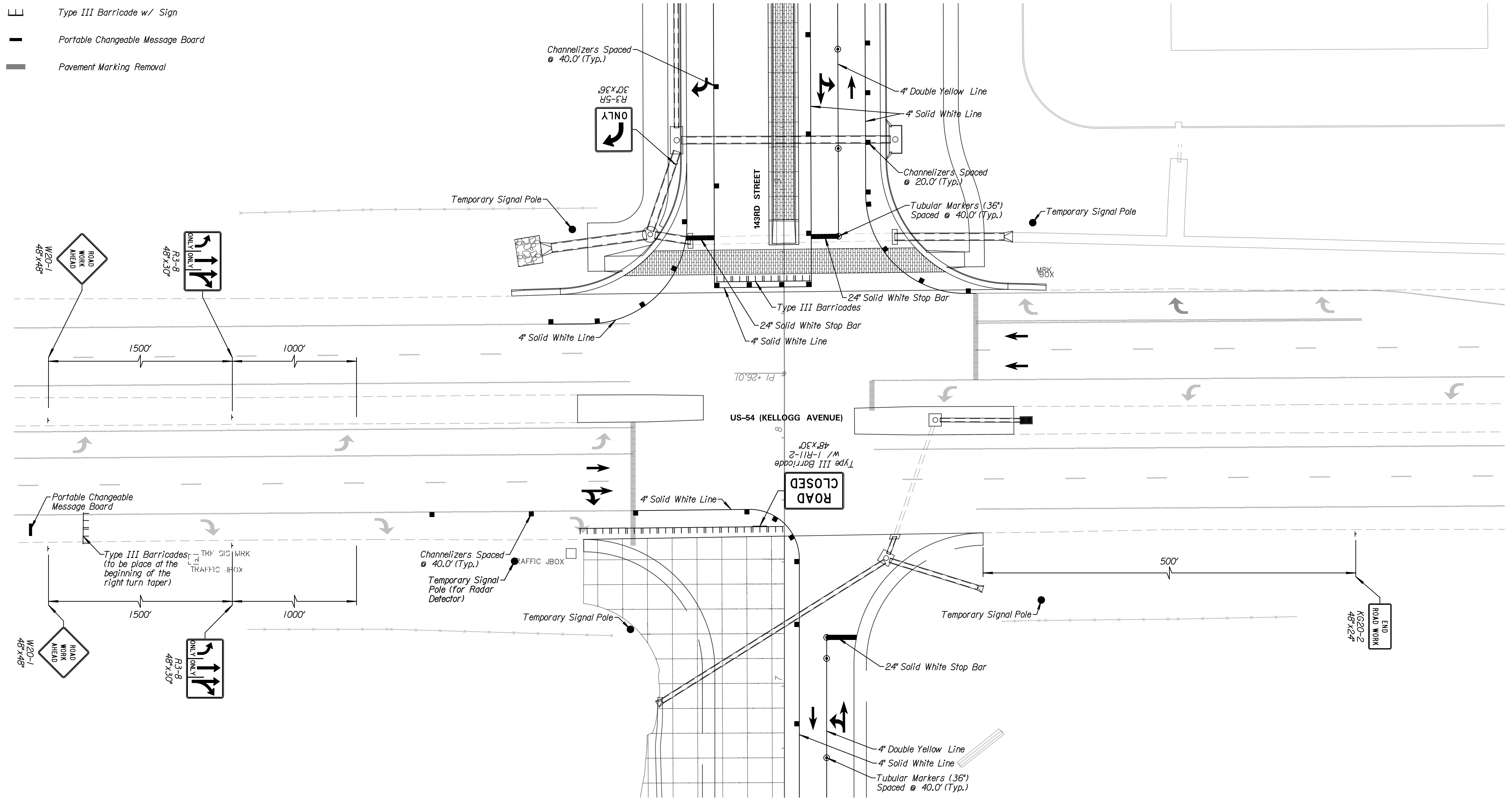
SHEET NO.
123



LEGEND

- Phase 6
- Single Post/Skid Mounted Sign
- Channelizer
- Tubular Marker (36")
- Type III Barricade
- Type III Barricade w/ Sign
- Portable Changeable Message Board
- Pavement Marking Removal

Note:
 One (1) week prior to construction, the Contractor shall position a portable changeable message board at a location determined by the Engineer to warn travellers that the right turn lane shall be closed and large vehicle right turn movements shall be restricted during construction.
 When construction commences the portable changeable message board shall warn traffic that large vehicle traffic right turn movements are restricted at 143rd Street. The message shall be determined by the Engineer unless otherwise noted on the plans.
 For temporary traffic signal details, See Sheets 128 & 129



5/26/2017 11:15:29 AM c:\tran\systems\paw_ba\alltransys\paw_ba\ummed\0228400\C-CP-001-201d.DGN