

CONSULTANTS:

143RD STREET IMPROVEMENTS

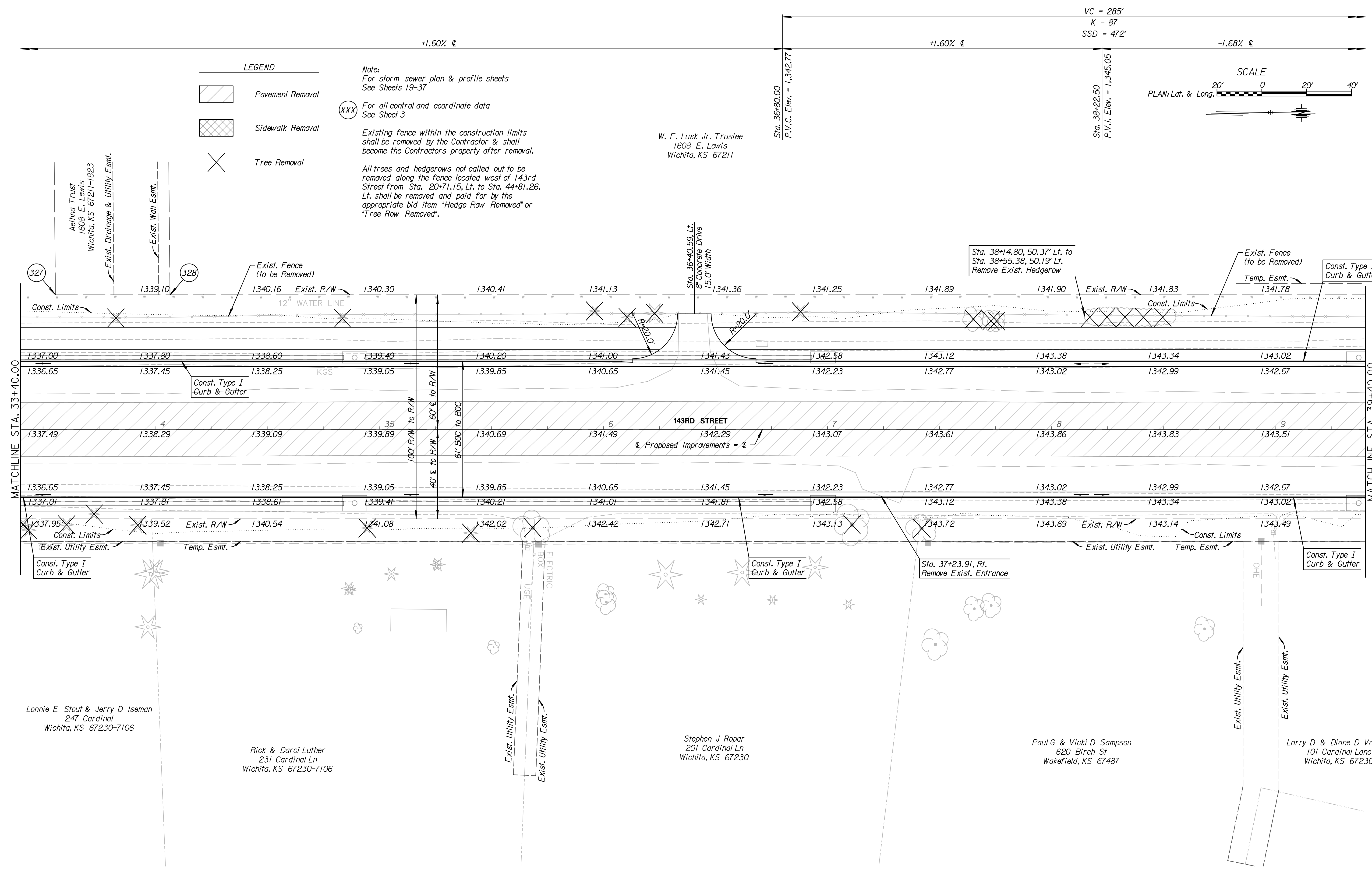


REVISIONS:	MARK	DATE	DESCRIPTION

PROJ NO: 87 N-0614-01  
 SCALE: 1" = 20'  
 DATE: 5/26/2017  
 DESIGNED BY: TAU  
 DRAWN BY: TAU  
 CHECKED BY: MDB

SHEET TITLE:  
**143RD STREET  
 PLAN & PROFILE  
 STA. 33+40.00 TO  
 STA. 39+40.00**

SHEET NO.  
**14**  
 SHEET 14 OF 236



**LEGEND**

- Pavement Removal
- Sidewalk Removal
- Tree Removal

**Notes:**  
 For storm sewer plan & profile sheets  
 See Sheets 19-37

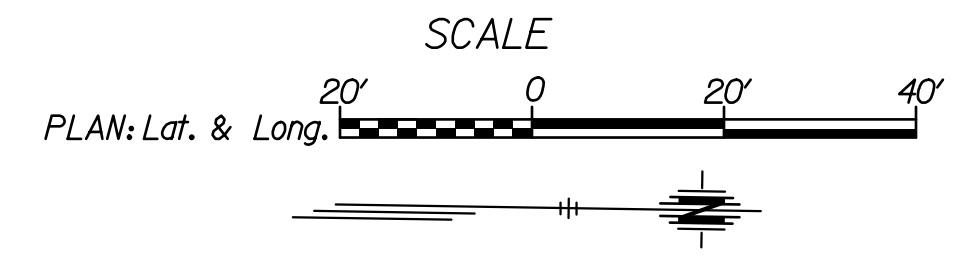
**(XXX)** For all control and coordinate data  
 See Sheet 3

Existing fence within the construction limits  
 shall be removed by the Contractor & shall  
 become the Contractors property after removal.

All trees and hedgerows not called out to be  
 removed along the fence located west of 143rd  
 Street from Sta. 20+71.15, Lt. to Sta. 44+81.26,  
 Lt. shall be removed and paid for by the  
 appropriate bid item "Hedge Row Removed" or  
 "Tree Row Removed".

W. E. Lusk Jr, Trustee  
 1608 E. Lewis  
 Wichita, KS 67211

VC = 285'  
 K = 87  
 SSD = 472'



Lonnie E Stout & Jerry D Iseman  
 247 Cardinal  
 Wichita, KS 67230-7106

Rick & Darci Luther  
 231 Cardinal Ln  
 Wichita, KS 67230-7106

Stephen J Ropar  
 201 Cardinal Ln  
 Wichita, KS 67230

Paul G & Vicki D Sampson  
 620 Birch St  
 Wakefield, KS 67487

Larry D & Diane D Vansike  
 101 Cardinal Lane  
 Wichita, KS 67230

11/03/17 AM c:\tran\systems\paw\_ba\alltrans\paw\14ummed\0228400C-RDVM-M01-105.dgn  
 taummed  
 5/26/2017