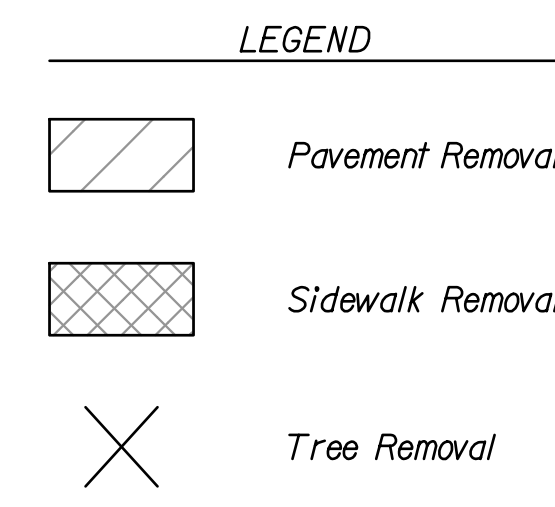


VC = 285'
K = 87
SSD = 472'
-1.68% g

-1.68% g



Note:
For storm sewer plan & profile sheets, See Sheets 19-37

(XXX) For all control and coordinate data, See Sheet 3

Existing fence within the construction limits shall be removed by the Contractor & shall become the Contractors property after removal.

All trees and hedgerows not called out to be removed along the fence located west of 143rd Street from Sta. 20+71.15, Lt. to Sta. 44+81.26, Lt. shall be removed and paid for by the appropriate bid item "Hedge Row Removed" or "Tree Row Removed".

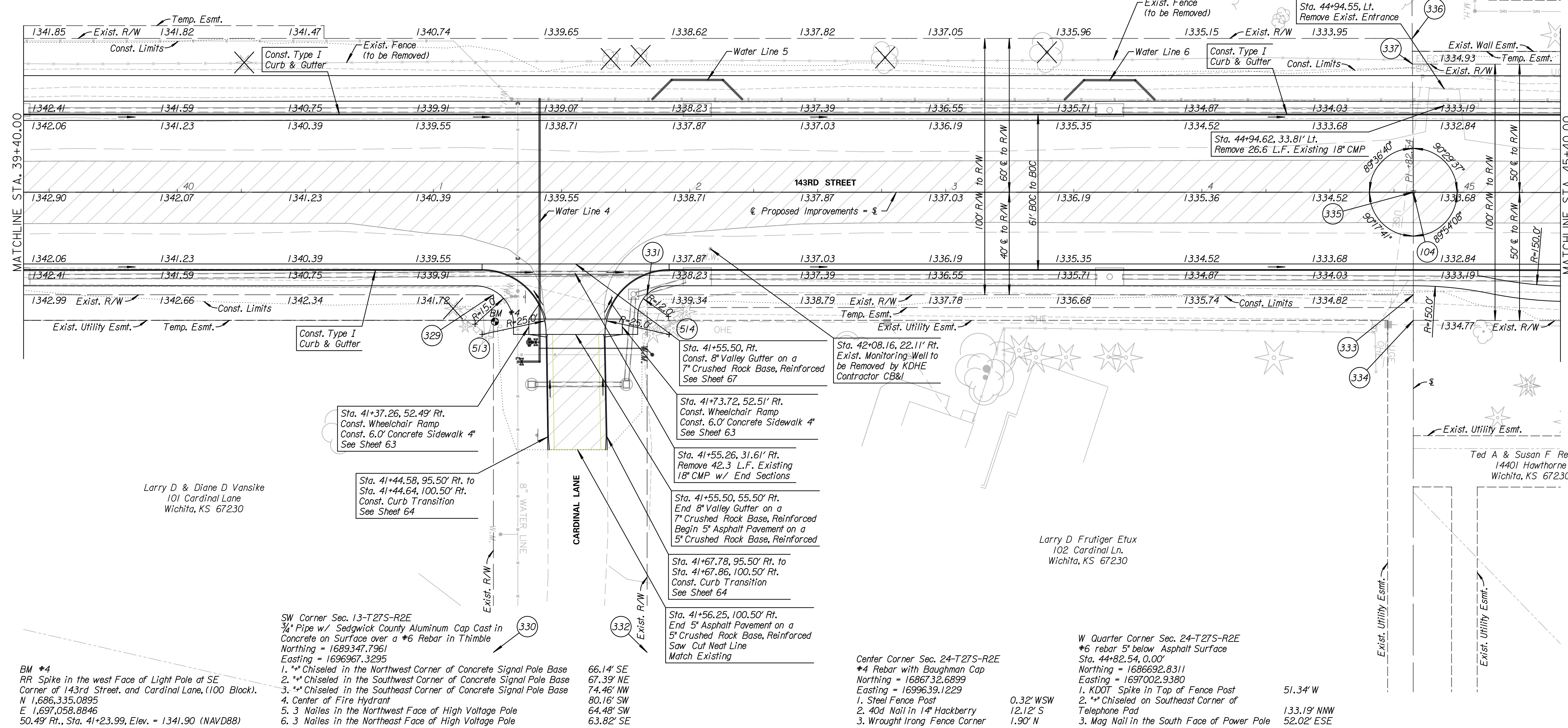
For Water Line Plan and Profile Sheets, See Sheets 169-176

Exist. Monitoring Well located at Sta. 42+08.16, 22.11' Rt. shall be removed by CB&I during construction. The Contractor shall coordinate with Steve Persons at (316)-220-8023 for information on the removal of the monitoring well.

W. E. Lusk Jr. Trustee
1608 E. Lewis
Wichita, KS 67211

REMOVAL OF EXISTING STRUCTURES
(FOR INFORMATION ONLY)

STATION	LOCATION	DESCRIPTION
41+55.26	Rt.	42.3 L.F. 18" CMP w/ 2 End Sections
44+94.62	Lt.	26.6 L.F. 18" CMP
Project Wide		Lightpoles & Bases, Signs & Sign Footings



BM #4
RR Spike in the west Face of Light Pole at SE Corner of 143rd Street and Cardinal Lane, (100 Block).
N 1,686,335.0895
E 1,697,058.8846
50.49' Rt., Sta. 41+23.99, Elev. = 1341.90 (NAVD88)

Larry D & Diane D Vansike
101 Cardinal Lane
Wichita, KS 67230

SW Corner Sec. 13-T27S-R2E
3/4" Pipe w/ Sedgwick County Aluminum Cap Cast in Concrete on Surface over a #6 Rebar in Thimble
Northing = 1689347.7961
Easting = 1696967.3295

- *Chiseled in the Northwest Corner of Concrete Signal Pole Base
- *Chiseled in the Southwest Corner of Concrete Signal Pole Base
- *Chiseled in the Southeast Corner of Concrete Signal Pole Base
- Center of Fire Hydrant
- 3 Nails in the Northwest Face of High Voltage Pole
- 3 Nails in the Northeast Face of High Voltage Pole

66.14' SE
67.39' NE
74.46' NW
80.16' SW
64.48' SW
63.82' SE

- Sta. 41+37.26, 52.49' Rt. Const. Wheelchair Ramp Const. 6.0' Concrete Sidewalk 4" See Sheet 63
- Sta. 41+44.58, 95.50' Rt. to Sta. 41+44.64, 100.50' Rt. Const. Curb Transition See Sheet 64
- Sta. 41+55.50, 55.50' Rt. End 8" Valley Gutter on a 7" Crushed Rock Base, Reinforced Begin 5" Asphalt Pavement on a 5" Crushed Rock Base, Reinforced
- Sta. 41+67.78, 95.50' Rt. to Sta. 41+67.86, 100.50' Rt. Const. Curb Transition See Sheet 64
- Sta. 41+56.25, 100.50' Rt. End 5" Asphalt Pavement on a 5" Crushed Rock Base, Reinforced Match Existing
- Sta. 41+55.50, Rt. Const. 8" Valley Gutter on a 7" Crushed Rock Base, Reinforced See Sheet 67
- Sta. 41+73.72, 52.51' Rt. Const. Wheelchair Ramp Const. 6.0' Concrete Sidewalk 4" See Sheet 63
- Sta. 41+55.26, 31.61' Rt. Remove 42.3 L.F. Existing 18" CMP w/ End Sections
- Sta. 42+08.16, 22.11' Rt. Exist. Monitoring Well to be Removed by KDHE Contractor CB&I

Larry D Frutiger Etux
102 Cardinal Ln.
Wichita, KS 67230

W Quarter Corner Sec. 24-T27S-R2E
#6 rebar 5" below Asphalt Surface
Sta. 44+82.54, 0.00'
Northing = 1686692.8311
Easting = 1697002.9380

- KDOT Spike in Top of Fence Post
- *Chiseled on Southeast Corner of Telephone Pad
- Mag Nail in the South Face of Power Pole

51.34' W
133.19' NNW
52.02' ESE

Tran Systems
245 NORTH WACO
SUITE 222
WICHITA, KANSAS 67202
PHONE: 316-303-3000
FAX: 316-462-5629

CONSULTANTS:

143RD STREET IMPROVEMENTS



REVISIONS:	DESCRIPTION	MARK	DATE

PROJ NO: 87 N-0614-01
SCALE: 1" = 20'
DATE: 5/26/2017
DESIGNED BY: TAU
DRAWN BY: TAU
CHECKED BY: MDB

SHEET TITLE:
143RD STREET
PLAN & PROFILE
STA. 39+40.00 TO
STA. 45+40.00

SHEET NO.
15
SHEET 15 OF 236