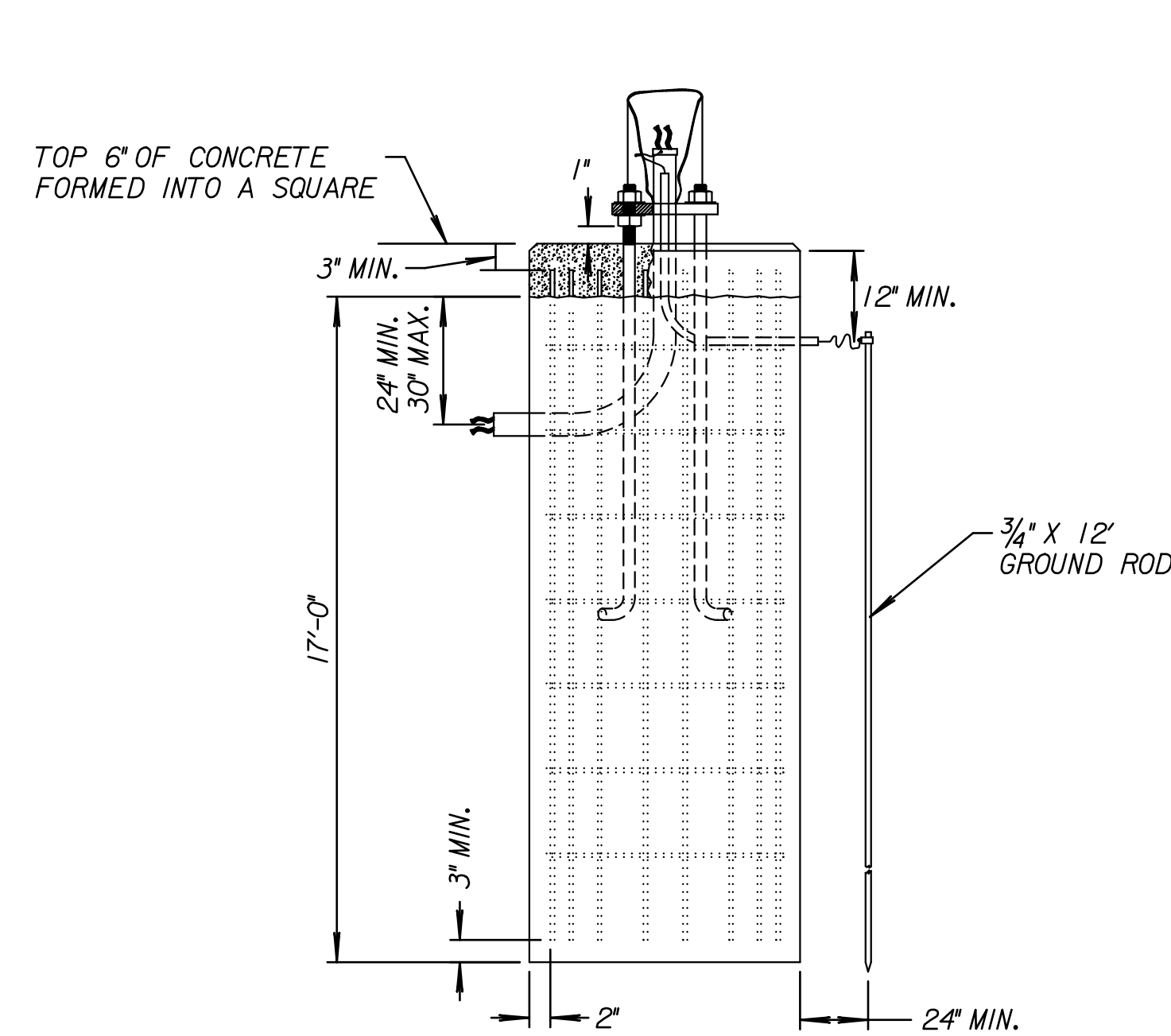
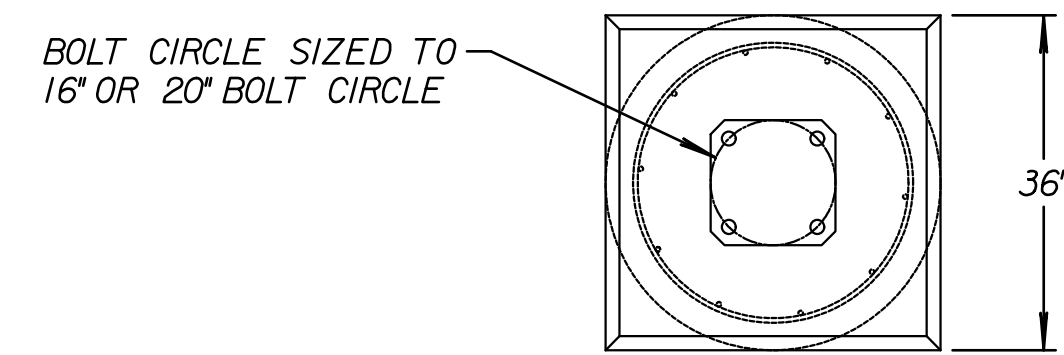
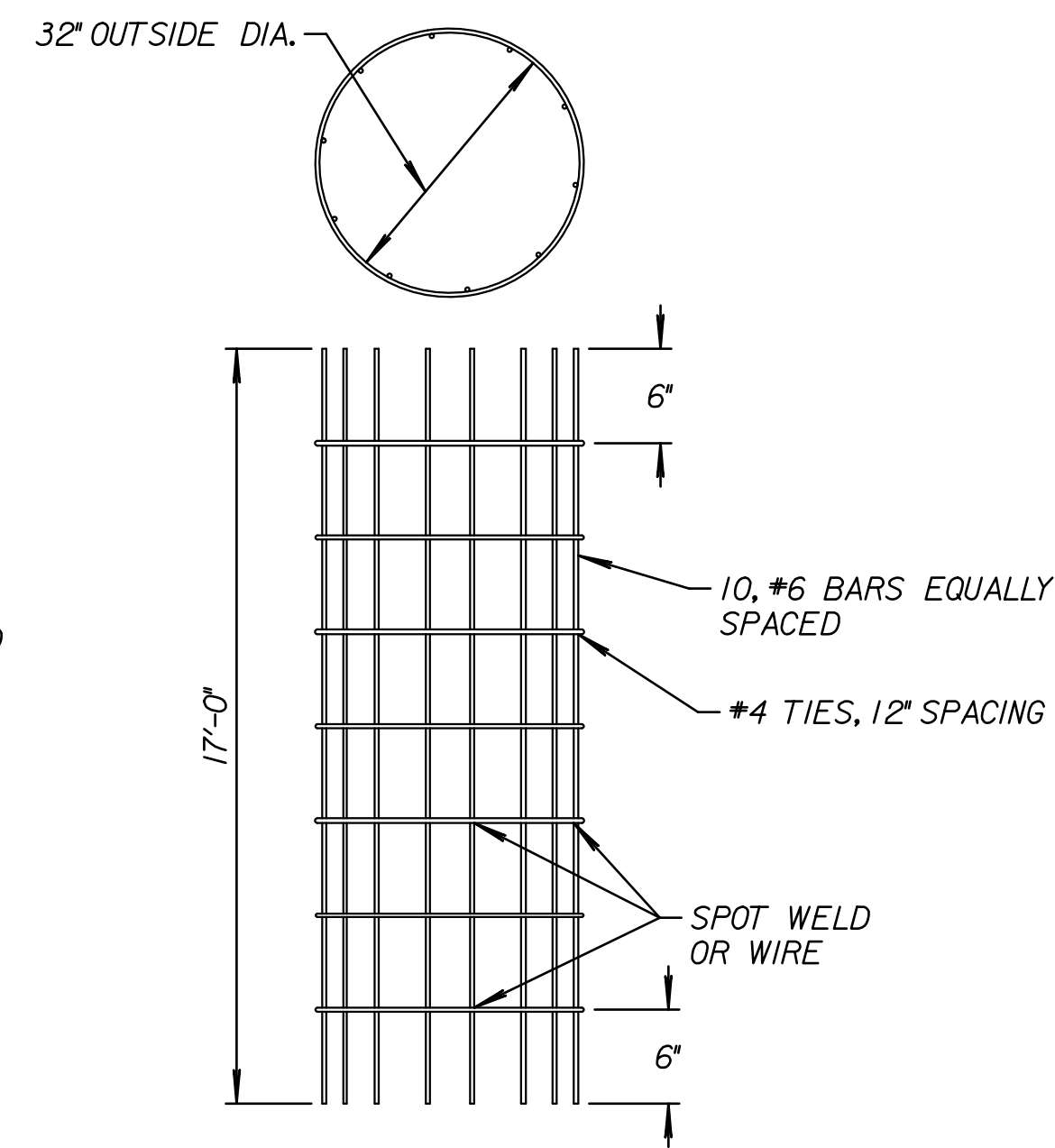


GENERAL NOTES

1. THE ANCHOR BOLTS FOR THE SIGNAL POLE SHALL BE TACK WELDED TOGETHER IN A 16" OR 20" DIA. BOLT PATTERN (ON CENTERS AS SHOWN) TO MAINTAIN REQUIRED BOLT CONFIGURATION PATTERN AND TO AID IN VERTICAL POSITIONING WHILE CONCRETE BASE IS POURED.
2. USE ANTI-SEIZE COMPOUND ON ALL THREADS.
3. 12' x 3/4" GROUND ROD TO BE POSITIONED BEFORE POURING BASE.
4. CONCRETE SHALL MEET THE REQUIREMENTS OF GRADE 4.0 PER KDOT STANDARD SPECIFICATIONS.
5. CONSTRUCT A 6" THICK x 36" SQUARE CONCRETE CAP AFTER POLE HAS BEEN ERECTED & PLUMBED. CHAMFER EDGE 1". MUST BE APPROVED BY ENG. BEFORE POURED.
6. CONDUIT SHALL HAVE PLASTIC (OR METAL) BUSHING (ABOVE BASE) TO PREVENT CABLE CHAFING.
7. USE #6 BARE COPPER GROUND CONDUCTOR FROM CLAMP TO GROUND BOLT IN ACCESS HOLE.



MAST ARM POLE & BASE DETAIL



MAST ARM POLE REBAR CAGE DETAIL

SPECIAL POLE FOUNDATION - POLE 1 AT US-54 (KELLOGG)

IN THE EVENT SOUND ROCK IS ENCOUNTERED AT A DEPTH LESS THAN 17'-0" BELOW ADJACENT FINISHED GROUND ELEVATION, CONTRACTOR SHALL NOT PROCEED WITH OUT ENGINEER APPROVAL OF SOCKET DEPTH.

Tran Systems
 245 NORTH WACO
 SUITE 222
 WICHITA, KANSAS 67202
 PHONE: 316-303-3000
 FAX: 316-462-5629

CONSULTANTS:

143RD STREET IMPROVEMENTS

WICHITA, KANSAS

CITY OF WICHITA

REVISIONS:	MARK	DATE	DESCRIPTION

PROJ NO: 87 N-0614-01
 SCALE: NTS
 DATE: 5/26/2017
 DESIGNED BY: CCB
 DRAWN BY: CCB
 CHECKED BY: SGE

SHEET TITLE:
TRAFFIC SIGNAL FOOTING DETAILS

SHEET NO.
159

5/26/2017 11:18:57 AM c:\tran\systems\sw_local\transys\scop\pw\taummet\0228400\C-DT-SIG-501.dgn